

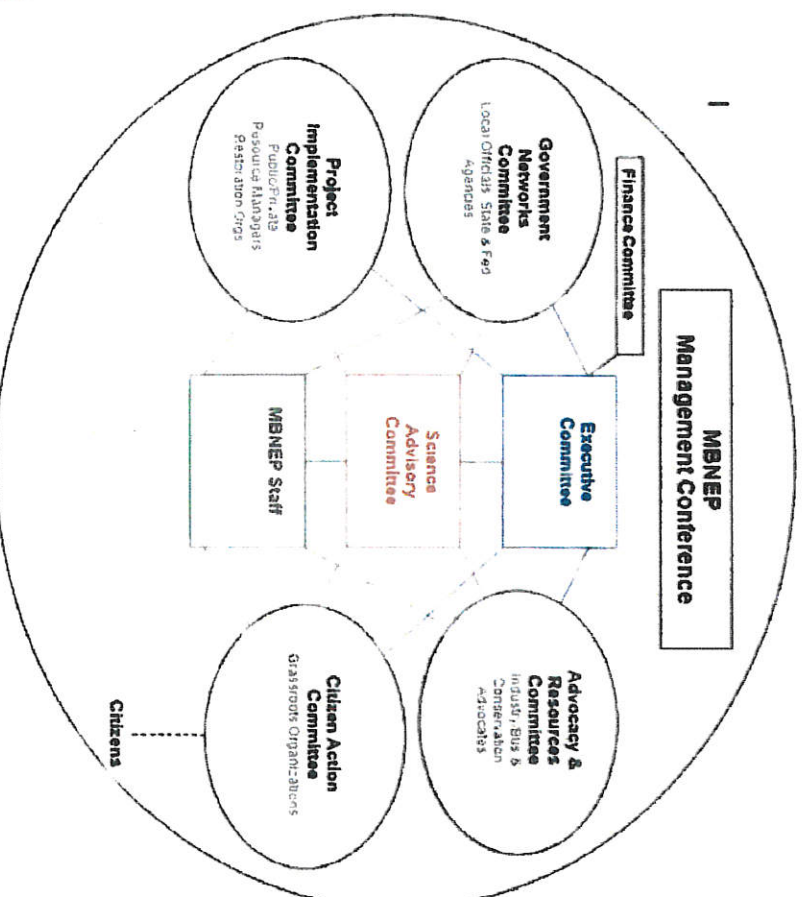
Appendix A

Public Education and Outreach

Local Partnerships



Mobile Bay National Estuary Program



A Division of the Dauphin Island Sea Lab

[The Landscape](#) [The Values](#) [The Issues](#) [The Watersheds](#) [Who We Are](#) [What We Do](#) [What We Monitor](#) [Library](#) [Events](#) [News](#)

News

[Three Mile Creek - Invasive Species Control Plan](#)

[RFQ: Fowl River Marsh and Shoreline Stabilization and Restoration Phase I Engineering and Design](#)

[Two New Additions to the Mobile Bay National Estuary Program](#)

[RFQ: Deer River Coastal Marsh and Shoreline Stabilization Engineering and Design](#)

[45 Day Open Public Comment Period - RESTORE Council Planning Framework Draft](#)

[RFQ: Develop A Standard Habitat Classification Scheme and Change Analysis](#)

[RFQ: Provide Baseline Sediment and Water Quality Assessments for Area Watersheds](#)

[read more...](#)



[Comprehensive Conservation & Management Plan 2013-2018](#)

[Workplans](#)

[Publications](#)

[Create A Clean Water Future](#)



[Executive Committee](#)

[Government Networks Committee](#)

[Business Resources Committee](#)

[Project Implementation Committee](#)

[Science Advisory Committee](#)

[Community Action Committee](#)

[Community Resources Committee](#)

[Finance Committee](#)



[D'Olive Watershed](#)

[Western Shore](#)

[Fowl River Watershed](#)

[Bayou La Batre Watershed](#)

[Three Mile Creek Watershed](#)

[more...](#)



[Three Mile Creek - Mobile's Destination Waterway](#)

[The Dunes of Dauphin Island](#)

[The Absence of Doubt - 2018 Year End Video](#)

[The Flight of The Frigate Bird](#)

[Building Capacity for Resiliency](#)

[Transformations - The Butterfly Effect Across the Alabama Coast](#)

[Low Impact Development \(LID\)](#)

A Division of the Dauphin Island Sea Lab

[The Landscape](#) [The Values](#) [The Issues](#) [The Watersheds](#) [Who We Are](#) [What We Do](#) [What We Monitor](#) [Library](#) [Events](#) [News](#)

[Home](#) » [Who We Are](#) » Here

Our Partners

Alabama Coastal Fishermen's Association
Alabama Department of Conservation and Natural Resources
Alabama Department of Public Health
Alabama Gulf Coast Convention and Visitors Bureau
Alabama Marine Resources Division
Alabama Rivers Alliance
Alabama State House of Representatives
Alabama State Port Authority
Auburn University Marine Extension & Research Center

Baldwin County

Baldwin County Environmental Advisory Board
Baldwin County Soil and Water Conservation District
Bon Secour River Protection Association
City of Bayou La Batre
City of Citronelle
City of Foley
City of Orange Beach
City of Robertsdale
City of Satsuma
Clean Water Future
Congressman Bradley Byrne
Dauphin Island Sea Lab
Eastern Shore Chamber of Commerce
Fairhope Environmental Advisory Board
Fowl River Area Civic Association
Friends of the Bon Secour National Wildlife Refuge
Grand Bay National Estuarine Research Reserve
Gulf Fisheries Management Council
Gulf Shores Convention and Visitors Bureau
Lake Forest Civic Association
Little Lagoon Preservation Society
Mobile Airport Authority
Mobile Area Water & Sewer System
Mobile Bay Kayak Fishing Association
Mobile County
Mobile County Soil and Water Conservation District
National Oceanic and Atmospheric Administration
Partners for Environmental Progress
Senator Richard Shelby
South Alabama Regional Planning Commission
Southeastern Wildlife Conservation Group
The City of Daphne
The City of Mobile
Thompson Engineering
Town of Elberta
Town of Magnolia Springs
Town of Silverhill
Toxicological & Environmental Associates, Inc
United States Environmental Protection Agency
United States House of Representatives

Alabama Coastal Foundation
Alabama Department of Environmental Management
Alabama Department of Transportation
Alabama Gulf Coast Restore Council
Alabama Power
Alabama Senate
Alabama State Lands Division
Auburn University
Audubon Society

Baldwin County Commission

Baldwin County Planning and Zoning Department
Barry Vittor & Associates
City of Bay Minette
City of Chickasaw
City of Creola
City of Gulf Shores
City of Prichard
City of Saraland
City of Spanish Fort
Coastal America
Dauphin Island Bird Sanctuaries
Dog River Clear Water Revival
EPA Gulf of Mexico Program
Fort Morgan Civic Association
Friends of Perdido Bay
Friends of the Tensaw
Grassroots, Inc.
Gulf of Mexico Program
Junior League of Mobile
League of Women Voters
Mississippi-Alabama Sea Grant Consortium
Mobile Area Chamber of Commerce
Mobile Bay Canoe and Kayak Club
Mobile Baykeeper
Mobile County Commission
Mobile County Wildlife and Conservation Association
Organized Seafood Association
Portersville Bay Revival
Smart Coast, Inc
South Bay Communities Association
State of Alabama
The City of Fairhope
The Nature Conservancy
Town of Dauphin Island
Town of Loxley
Town of Perdido Beach
Town of Summerdale
United States Army Corps of Engineers
United States Fish & Wildlife Services
United States Senate



Mobile Bay National Estuary Program Executive Committee Meeting
May 18, 2018 10:00 a.m. – 12:00 p.m.
Original Oyster House, Spanish Fort, AL

AGENDA

Meeting Objectives

- a) Provide status of program activities and CCMP Update Activities
- b) Approve Work Plan for 2018-2019

1. Introductions/Call to Order:
2. Approval of Minutes February 23, 2018
3. Director's Report
 - a) Budget vs Actual 3-31-2018
 - b) CCMP Update Process
 - c) Key Accomplishments
4. Committee Reports
 - a) Science Advisory
 - b) Project Implementation
 - c) Government Networks
 - d) Community Action
 - e) Business Resources
 - f) Community Resources
 - g) Finance Committee
5. Old Business
6. New Business
7. Other/Announcements
8. Adjourn

Mobile Bay National Estuary Program Executive Committee Meeting
Original Oyster House Banquet Hall, Spanish Fort, AL
May 18, 2018 10:00 am-12:00 pm

Attendees – Scott Bannon, ADCNR Marine Resources; Mark Berte, Alabama Coastal Foundation; Chris Blankenship, ADCNR; Ruth Carmichael, Dauphin Island Sea Lab; Jennifer Denson, Partners for Environmental Progress; Darrelyn Dunmore, Strategic Wealth Specialists; Mimi Fearn, Dog River Clearwater Revival; Leslie Gahagan, City of Foley; Charles “Skip” Gruber, Baldwin County Commission; Judy Haner, The Nature Conservancy; Patric Harper, U.S. Fish & Wildlife Service; Amy Hunter, ADCNR; James Lyons, Alabama State Port Authority; Ben Malone, USDA-NRCS; Eliska Morgan, Alabama Gulf Coast Restore Council; Chris Plymale, EPA Region 4; Patti Powell, ADCNR; William Sisson (Bob Chappelle-proxy), Mobile Area Chamber of Commerce; LaDon Swann, Mississippi-Alabama Sea Grant/Auburn; Chris Thomas, EPA Region 4; John Valentine, Dauphin Island Sea Lab

MBNEP Staff Present: *Roberta Swann, Tom Herder, Christian Miller, Rick Frederick, Kelley Barfoot, Tiffany England, Jason Kudulis, Paul Lammers, Bethany Dickey, Jackie Wilson, and Katy Hines*

1. **Introductions/Call to Order:** Commissioner Chris Blankenship called meeting to order at 10:05 a.m.
2. **Approval of Minutes:** Commissioner Blankenship asked for comments or revisions to the minutes from the February 23, 2018 meeting. Eliska Morgan made a motion to approve and Mark Berte seconded the motion.
3. **Director’s Report**
 - a) Budget vs. Actual: our EPA grant has followed our 5-year CCMP. Our new 5-year EPA grant will begin October 1, 2018. We are trying to zero out the EPA funded grants (shown on the BVA) to close out the grant. We did ask for a 9-month extension for about \$42,000 because there are some activities funded through the EPA grant that we anticipate going past September 30 (Annual Meeting Video and Citizen Monitoring).
 - b) CCMP Update Process: We will be updating the Comprehensive Conservation & Management Plan (CCMP) this year for the next 5 years. We have contracted with Shafer Consulting from Sarasota, FL, who has worked on CCMP updates with Tampa, Charlotte Harbor and Sarasota NEPs, to assist with our update. Each committee is reviewing accomplishments, assessing current objectives, and modifying each CCMP strategy to encompass the goals for the next five years. We will be working with the State to conform with Alabama Coastal Non-Point Source Control Program requirements. We will be engaging the Management Conference by having a planning meeting with entire conference in September and come up with a final strategy matrix. The updated CCMP will be completed by January.
 - c) Key Accomplishments: We finally finished the “Flight of the Frigate Bird” film about Dauphin Island. We have already had a premiere on Dauphin Island and soon to have one in Mobile County. MBNEP recently received a grant for \$300,000 from the US Endowment for Forestry and Communities for healthy watershed protection through conservation of headwater habitats in the Mobile Bay Basin. Our goal is to protect 10,000 acres in the first year and 100,000 over 5 years.

Our annual workplan is due to EPA on June 1st. Because we are in the process of updating our CCMP, some of the goals will change, but the budget numbers will stay the same. Our EPA grant for the upcoming FY 2018-2019 will be \$600,000, with a projected non-federal match dollar amount of \$354,088, giving us a total of \$954,088 in EPA related funding. Ms. Swann asked for approval of the Annual Workplan Budget. Darrelyn Dunmore made a motion to approve and Eliska Morgan seconded the motion. The submitted budget includes funding from local municipalities. (See attached).

4. Committee Reports (MBNEP Management Conference Co-Chairs)

Science Advisory Committee

Dr. Ruth Carmichael gave an update on the SAC meeting on May 16th. The meeting focused on the Fowl River Marsh Health Study. The team provided a project update based on the work being done with each component - vegetation, hydrology, and sediments. Dr. Carmichael made a request to the Executive Committee to add a hydrodynamic modeling component to the study. Mark Berte made a motion of approval and Dr. Mimi Fearn seconded the motion. Motion carries with no opposition. Dr. John Lehrter and Dr. Amy Hunter have agreed to be the next SAC co-chairs. State of the Bay content creation continues. Tom Herder asked all members of the SAC to write vignettes of their own research for State of the Bay, which gives them the chance to advertise their own work.

Project Implementation Committee

Judy Haner gave an update on the May 3rd PIC meeting. The PIC went through a voting process to re-prioritize the remaining watersheds from RESTORE funding. The top three watersheds are the MTA Delta, Fly Creek, and Bayou Sara. Roberta pointed out that all the other committees will be doing this ranking process and that the priorities are different among the other committees.

Government Networks Committee

Commissioner Skip Gruber gave an update on the May 18th GNC meeting. Justin McDonald with USACE presented an overview of their Coastal Vulnerability Assessment. The members did the watershed prioritization exercise. A Survey Monkey is being conducted to assess current strengths and weaknesses to determine ways the GNC can better serve its members.

Community Action Committee

Leslie Gahagan reported for the CAC. The next meeting is scheduled for May 30th. The committee will undergo the CCMP review and set committee goals for 2018-2019. A conference call was organized with ADEM and AWW to work on getting a better relationship between agency and volunteer monitoring groups. 15 new monitors have been trained since February. The Alabama Water Watch annual meeting will be held in coastal Alabama in 2019.

Business Resources Committee

Darrellyn Dunmore and Rick Frederick reported for the BRC. The next meeting is scheduled for June 26th. Litter Gitters are being deployed in both counties. MBNEP has two grants (EPA Trash Free Waters, Gulf of Mexico Program) for the construction, installation, and maintenance of a total of 14 Litter Gitters, 10 of which will be in Three Mile Creek. MBNEP and PEP are sponsoring another 3 Litter Gitters in Dog River. The Gulf of Mexico Grant is also funding the implementation of a volunteer monitoring program (SWAMP) and the implementation of a plan targeting 5 businesses in the watershed to encourage alternative packaging. The BRC is re-launching the Create a Clean Water Future Campaign. Since there aren't any parameters to who can join CCWF, there will soon be membership levels, brand requirements and other requirements like company recycling, company cleanups, and clean parking lot programs.

Community Resources Committee

Mark Berte reported on the May 9th CRC meeting. The committee completed an evaluation of the 5-year CCMP EPI goals, objectives, and activities. "The Diverse Delta" was the top choice for the CRC social marking campaign. The committee is in the process of conducting an inventory of completed activities from year 4 of the CCMP.

5. Other / Announcements

- Alabama Mississippi Bays & Bayous will be held in Mobile this year- November 28-29, 2018
- The Twelve Mile Creek stream restoration project is underway and the community meeting will be held June 7th
- The Exploreum water exhibit opens June 13th

- Governor Ivey is hosting a restoration summit October 11th for coastal Alabama.
- **Each committee will hold nominations for new co-chairs after their 5-year tenure.**

Adjourned at 11:45 a.m.

Activity	Year U1: 2018-2019	Past Year EPA Funding Available	External Funding Available	Total
Estuary Status and Trends	45,000	-	378,844	423,844
Coastal Monitoring	45,000			45,000
Watershed Restoration Monitoring			\$ 55,844	55,844
Sediment Studies (Federal RESTORE)			\$ 323,000	323,000
Ecosystem Restoration and Protection	20,000	-	5,723,131	5,743,131
General Watershed Implementation Reserve	20,000		\$ 20,000	40,000
D'Olive Watershed Restoration			\$ 2,182,569	2,182,569
Fowl River Watershed Restoration			\$ 710,032	710,032
Watershed Restoration Planning (Federal RESTORE)			\$ 2,542,667	2,542,667
Tensaw Applache Watershed Restoration- Planning			\$ 6,025	6,025
Mobile Bay Watershed Conservation (HWC)			\$ 261,838	261,838
Three Mile Creek Watershed Restoration (Federal RESTORE)			\$ 17,430	17,430
Technical Assistance and Capacity Building	7,500	17,595	-	25,095
Citizen Science/Volunteer Monitoring	2,500	\$ 17,595		20,095
Conservation Corps	2,500			2,500
Municipal Staff Support/Training	2,500			2,500
Education and Public Involvement	74,541	21,627	-	96,168
Management Conference Support/Cultivation	4,000			4,000
Newsletter	8,000			8,000
Signage	5,000			5,000
Public Outreach: Clean Water Future Campaign	15,041	\$ 13,502		28,543
Public Outreach: Social Media, Website, Video	30,000	\$ 8,125		38,125
Special Events	7,500			7,500
Promotional SWAG	5,000			5,000
Management and Program Administration	832,047	-	-	832,047
Program Delivery/Operation	707,601			707,601
Indirect Charges	124,446			124,446
Grand Total EPA Budget	979,088	39,222	6,101,975	7,120,285

EPA Annual Appropriation	625,000
Match (Projected)	354,088
Total Available Budget	979,088



Mobile Bay National Estuary Program: Project Implementation Committee
Blakeley Hall, 5 Rivers Delta Resource Center
Thursday, September 27, 2018, 1:00-4:00 p.m.
Agenda

1. Welcome and Call to Order

- **Introduce Guests, Visitors, Members**

Old Business:

- 2. Approval of Minutes of Last Meeting: May 3, 2018**
- 3. Update on Watershed Management Plans: Christian Miller, MBNEP**
- 4. CCMP Ecosystem Restoration & Protection Update**

New Business:

- 5. Announcements**
- 6. Adjourn**



**Mobile Bay National Estuary Program
Project Implementation Committee Meeting Minutes
Thursday, September 27, 2018
5 Rivers Delta Resource Center, Blakeley Hall**



Attendees:

Don Blancher (Moffatt & Nichol)
Celena Boykin (Baldwin Co. Planning & Zoning)
Denise Brown (Stantec)
Mary Kate Brown (The Nature Conservancy)
Wade Burcham (Integrated Science & Engineering)
Ashley Campbell (City of Daphne)
Camilla English (ADPH)
Jay Estes (Allen Engineering)
Paige Felts (Volkert)
Carl Ferraro (ADCNR, Coastal Section)
Richard Fields (Alabama Forestry Commission)
Casey Fulford (Baldwin Co. SWCD)
Leslie Gahagan (City of Foley)
Judy Haner (The Nature Conservancy)
Patric Harper (U.S. Fish & Wildlife)
Ashley Henderson (ASWCC)
Edith Loudon (Geotechnical Engineering)
Paul Mickle (MDMR)

Andy James (Volkert)
Jacob Hartley (Mobile Baykeeper)
Caroline Garsed (Thompson Engineering)
Eddie Kerr (Mobile County)
Veronica Klocinski (Payne Environmental)
Dina Knight (The Nature Conservancy)
Amy Newbold (EPA GOMP)
Chris Oberholster (Birmingham Audubon)
Chris Plymale (EPA Region 4)
Justin Rigdon (ADEM)
Jason Shaw (ALDOT)
Brian Spears (U.S. Fish & Wildlife)
Will Underwood (ADCNR)
Lee Walters (Goodwyn, Mills & Cawood)
Chris Warn (Environmental Science Associates)
Connie Whitacker (Alabama Coastal Foundation)
Joyce Nicholas (NRCS)

MBNEP Staff: Roberta Swann, Christian Miller, Paul Lammers, Jason Kudulis, and Bethany Dickey

1. Call to Order:

The meeting was called to order at 1:13 pm by Patric Harper. Attendees went through a round of self-introductions.

2. Approval of the Minutes:

Mr. Harper asked for any deletions, additions, changes to the minutes from May 3, 2018. Hearing none, he called for a motion to approve the minutes. Carl Ferraro made the motion, which Lee Walters seconded. The motion carried unanimously.

3. Update on Watershed Management Plans: Christian Miller, MBNEP

- Casey Fulford was introduced as a new member of the PIC. She is working in the newly created position of Watershed Management Coordinator for the Baldwin County Soil and Conservation District. Her initial duties will be to manage implementation of the Weeks Bay WMP. She has established a Weeks Bay Implementation Working Group of stakeholders to guide and inform the process.
- The Bayou La Batre WMP is posted on the MBNEP web page and open for public review and comment.
- The Wolf Bay WMP is in its initial planning phase. There is a public meeting scheduled on Tuesday, October 2, 2018 at Graham Creek at 6:00 PM.

4. CCMP Update for Ecosystem Restoration and Protection (ERP): Roberta Swann, MBNEP

Roberta and Judy led the group through a review of the ERP section update inputs from the August 30th CCMP Summit update meeting and the post-meeting survey. Handouts for this exercise included the draft ERP section spreadsheet with proposed updates (attached) and the ERP section rankings from the post-meeting survey (attached).

- ERP Goal 1: Improve trends in water quality in priority watersheds.
 - The PIC agreed to broaden the goal language from the previous version of ERP:1 and to delete the previous reference to impaired waters.
 - The PIC also discussed the advantages of setting separate objectives for tidally influenced watersheds (new section 1.1) and non-tidally influenced watersheds (new section 1.2) in the updated ERP strategy. The group agreed that including separate ERP objectives for the tidal and non-tidal watersheds would facilitate prioritizing, supporting, and funding non-tidal watershed management plans.
 - The PIC discussed and agreed to continue to limit the CCMP area of influence to the two coastal counties (Mobile and Baldwin Counties) for the next CCMP five-year plan before broadening the scope of the CCMP and moving efforts further north into other counties in the Mobile Bay watershed. Judy suggested the updated CCMP be worded to allow MBNEP to remain open for partnership opportunities in other counties.
 - The PIC agreed to set up a small work group (Ashley, Casey, Leslie, Joyce) to assess the opportunities and ideas (Clean Marinas, Smart Yards, etc.) listed on the ERP update spreadsheet for inclusion in future Requests for Proposals (RFPs).
- ERP Goal 2: Focus watershed management activities on priority habitats.
 - Need to review language in revised goal ERP 2 to see if it needs further refinement.
 - The PIC agreed and approved the wording for Objective 2.1: Develop a Coastal Alabama Restoration Tool (CART) in 2019.
 - The PIC approved the wording for Objectives 2.2 through 2.6 and their inclusion in the Habitat Plan.
 - The PIC agreed with Objective 2.7 to develop an Invasive Species Management Plan.
- ERP Goal 3: Restore/expand human connections to nature as a mechanism for improving environmental protection.
 - Objective 3.1: Protect and conserve priority habitats by acquisition and easement.
 - The PIC supports expanding local capacity for land trusts for land acquisitions and conservation easements.
 - The PIC discussed options of how to protect and maintain restoration projects for the long term.
 - How can maintenance be funded in perpetuity?
 - MBNEP to review and refine language in ERP Goal 3.
 - The PIC agreed to study concept of putting funds in some type of escrow account to fund long-term maintenance of projects.
 - The PIC discussed the benefit of the MBNEP management conference being expanded to include financial managers, bankers, and risk managers to further Goal 3.
 - Objective 3.2: Create 7 new access points in Mobile County: The PIC supported the idea of development of a Comprehensive Recreation Plan.
 - The PIC discussed, moved, and approved the draft ERP updated strategy spreadsheet and approved MBNEP making further language edits in line with the group discussion during the meeting.

5. Other Discussions

- The PIC members discussed the value and benefits of membership on the committee.
- The members discussed the idea of developing a member survey to seek ideas to improve PIC meetings.
- The PIC agreed to continue to hold three quarterly meetings per year. Members want to continue the current “big picture” format of the regular PIC meetings. Members stated they want meetings that include reports with updated information on big projects. Members in attendance agreed with the idea to schedule additional meetings if necessary for “deeper dives” into issues or topics.
- The PIC requested the GPRA/NEPORT report projects be shared with the group on at PIC meetings.

6. Schedule Next Meeting: The next PIC meeting will tentatively be held in January 2019.

7. Announcements

- The D'Olive Creek Watershed Management Plan is scheduled for updating sometime next spring.

8. Adjourn

Judy Haner asked for a motion to adjourn the meeting at 3:04 pm. Don Blanchard made the motion, which was seconded by Carl Ferraro.



Baldwin County Commission

Agenda Action Form

File #: 19-0311, **Version:** 1

Item #: BE4

Meeting Type: BCC Regular Meeting

Meeting Date: 12/3/2018

Item Status: New

From: Charles F. Gruber, Baldwin County Commission Chairman

Ronald J. Cink, Budget Director/County Administrator

Submitted by: Christie Davis, Senior Budget Accountant

ITEM TITLE

Resolution #2019-023 - Appropriation of Commission Discretionary Funds for the Mobile Bay National Estuary Program Annual Meeting

STAFF RECOMMENDATION

Take the following actions:

- 1) Approve Resolution #2019-023 of the Baldwin County Commission, which appropriates \$1,000.00 from the "Commission Discretionary Fund," in Baldwin County Fiscal Year 2018-2019, to the Mobile Bay National Estuary Program for their 5th Annual Meeting; and
- 2) Execute an Agreement between the Baldwin County Commission and the Mobile Bay National Estuary Program for the \$1,000.00 appropriation.

BACKGROUND INFORMATION

Previous Commission action/date: N/A

Background: The Mobile Bay National Estuary Program has requested funding assistance from the Baldwin County Commission related to the Mobile Bay National Estuary Program's 5th Annual Meeting to be held December 13, 2018, from 7:30 a.m. to 9:00 a.m.

The appropriation of \$1,000.00 is proposed to be made from the Commission Discretionary Fund and by an Agreement between the Baldwin County Commission and Mobile Bay National Estuary Program.

FINANCIAL IMPACT

Total cost of recommendation: \$1,000.00

Budget line item(s) to be used: 51990.5342

If this is not a budgeted expenditure, does the recommendation create a need for funding?
N/A

LEGAL IMPACT

Is legal review necessary for this staff recommendation and related documents?
Yes

Reviewed/approved by: County Attorney will review prior to Commission approval.

Additional comments: N/A

ADVERTISING REQUIREMENTS

Is advertising required for this recommendation? N/A

If the proof of publication affidavit is not attached, list the reason: N/A

FOLLOW UP IMPLEMENTATION

For time-sensitive follow up, select deadline date for follow up: N/A

Individual(s) responsible for follow up: Administration staff will handle all follow up.

Action required (list contact persons/addresses if documents are to be mailed or emailed):
Administration:

Send letter, copy of Resolution and original Agreement to:

Mobile Bay National Estuary Program
Attention: Roberta Swann
118 N. Royal St.
Suite 601
Mobile, Alabama 36602

Additional instructions/notes: N/A



November 14th, 2018

Honorable Skip Gruber, Commissioner
Baldwin County Satellite Courthouse, District 4
201 East Section St.
Foley, Alabama 36535

Dear Commissioner Gruber,

On behalf of the Mobile Bay National Estuary Program (MBNEP), I would like to request financial sponsorship in the amount of \$1,000 from Baldwin County for MBNEP's 5th Annual Meeting. This event will be held on the morning of December 13th, 2018 from 7:30 a.m. to 9:00 a.m.

As a member of the MBNEP Executive Committee and Co-Chair of the Government Networks Committee, you are aware of the continued success the MBNEP Management Conference has achieved this past year. This meeting provides the opportunity to share those accomplishments taking place across our two coastal counties and recognize the hard work of the many volunteers committed to protecting our coastal way of life.

We are asking both Baldwin and Mobile counties to sponsor this event in partnership with the Dauphin Island Sea Lab, the Alabama State Port Authority, Partners for Environmental Progress, and The Nature Conservancy, as we work together to preserve our coastal resources. Baldwin County's generosity will be recognized on promotional materials and on the day of the event.

We value your involvement and guidance as we continue to chart a course for protecting what we value most about living in coastal Alabama. Please contact me at (251) 380-7940 or rswann@mobilebaynep.com with any questions or to discuss further.

Thank you for considering this request and for being a wise steward of the waters, habitats, and heritage of the Mobile Bay estuary.

Sincerely,
Roberta Swann

 Share

Menu

 Search



[More Announcements...](#)

Upcoming Events

- ▶ 05/30 - Tree Risk Assessment Qualification Workshop
- ▶ 05/31 - 4-H Ambassador Applications Close in 4HOnline
- ▶ 05/31 - Tree Risk Assessment Qualification Workshop
- ▶ 05/31 - Recreational Pond Management
- ▶ 06/01 - Tree Risk Assessment Qualification Workshop
- ▶ 06/02 - 4-H Citizenship Washington Focus

N
t
s
&
d
8
1:
1:

E
H
C
E
C
3:
B
S
B
M
A
3:
P
(2
9
7
F
(2
9
7:

► 06/02 - Horse Pasture Pro - Equine Field Day

► 06/03 - 4-H Citizneship Washington Focus

► 06/04 - 4-H Citizneship Washington Focus

► 06/04 - 4-H Summer Camp (8 Sessions)

F
L

S
S

Baldwin County News

Mountain Lions In Alabama?

AUBURN, Ala. – We have seen them in movies and on the internet, but can we find mountain lions in Alabama? Commonly found in western... [more](#)

Grower and Ag Professional Training Events (Updated Weekly)

Year-round ACES training programs open to the public Private Pesticide Applicator Training Classes (Alabama Pesticide Education Program) <http://www.aces.edu/anr/pesticidemgt/> Alabama Master Gardeners Program <http://mg.aces.edu/> Monthly extension... [more](#)



Wheat Disease Situation for mid-May

Weather patterns have gotten much warmer and drier over the past three weeks since the last report ... As... [more](#)

Blue Disease in Cotton

Blue disease, which is caused by the aphid transmitted virus cotton leafroll dwarf, was tentatively identified in cotton collected in Barbour and Henry Co in... [more](#)

Wheat Disease Situation

Weather patterns over the past month have been cooler than the historical average with average to below average rainfall totals [more](#)

Scab Risk in Wheat

The wheat scab risk for Baldwin and Mobile Counties is high as compared with the low risk for scab development for the remainder of Alabama... [more](#)

How will burndown herbicides work with low temperatures?

Some areas of Alabama have been experiencing temperatures in the 30's this last week and forecasters say that more cold weather is to come... [more](#)

Weeds: They are important to everyone! Here is why

No matter where I go, whenever a conversation strikes up between someone and myself and they ask what my occupation is and I say that... [more](#)

Prescribed fire: A Series to promote better forest management and therefore better wildlife management

Forestry, Wildlife and Natural Resource Management ... Prescribed fire has been a part of land management across most of... [more](#)

Bamboo: Benefit or Boogeyman?

Golden bamboo (*Phyllostachys aurea*), planted as an ornamental and historically for use as fishing poles, is a familiar sight spreading around old... [more](#)

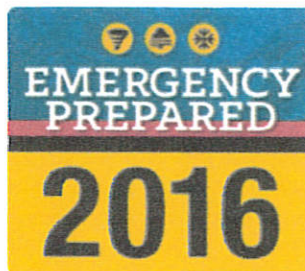
Follow Us:



Copyright © 1997 - 2018 by the
Alabama Cooperative Extension System
Alabama A&M University and Auburn University
All Rights Reserved. – webmaster@aces.edu
Legal Disclaimer – Privacy Statement

Bay Minette, AL
76 °F
leavy Thunderstorm
and Rain
at 03:53 AM

[Click for Forecast](#)





Alabama Coastal Foundation

Improving and protecting Alabama's coastal environment

DONATE

[Home](#)

[Cooperation](#)

[Education](#)

[Participation](#)

[Resources](#)

[Support](#)

[About Us](#)



Share Your Thoughts!

Our Mission: To improve and protect Alabama's coastal environment through cooperation, education, and participation.

All ACF programs are supported by donations from individuals, businesses, and organizations. Please let us know if you would like to support our organization.

Telephone: 205-992-6002
Email: info@joinACF.org

Join/Donate
Volunteer
Subscribe

What's New?

Mobile Bay Estuary Corps Wetland Regulations and Compliance Workshops Oyster Shell Recycling Program

Livable Communities Coalition

Join the Coastal Alabama Livable Communities Coalition's campaign to promote bicycle safety! [Click here to watch our bicycle safety public service announcements](#). If you are interested in joining or learning more about the Coastal Alabama LCC, [please click here](#).

Follow us on Instagram
@AlabamaCoastal



Calendar of Events

May 1: Check out the May edition of the Osprey Outlook Newsletter.

May 23: AGCRC Public Meeting about Draft Multiyear Implementation Plan, 6:00-8:00PM @ 5 Rivers Tensaw Theater.

May 28: ACF Office is closed for Memorial Day.

June 12: Green Drinks Fairhope from 5:00PM - 7:00PM @ Fairhope Brewing Company (914 Nichols Ave, Fairhope)

June 14: Wetland Compliance Workshop, 8:30 AM - 12:15PM at Mobile Area Association of Realtors. Advanced Workshop goes until 2:30 p.m. Click here to register.

June 20: Green Drinks Mobile from 5:00PM - 7:00PM @ Alchemy Tavern (7 South Joachim Street, Mobile).

June 27: South Alabama Non-Profit Summit from 9:00AM-3:30PM @ USA. Click here to register.

June 27: Free Connect To Your Coast Outreach Event from 4:00PM-9:00PM @ Serda Brewing Company.

July 3-5: ACF Office is closed for 4th of July holiday.

July 19: ACF Night @ the Hank! Click here to purchase your tickets.

Partnerships

We are dedicated to partnering with businesses, governments, and other non-profits to maximize our results. Here are just a few of our partners:

Non-Profit Groups and Governmental Agencies

- AARP of Alabama
- Alabama Coastal Heritage Trust
- Alabama Cooperative Extension Service
- Alabama Department of Conservation & Natural Resources
- Alabama Department of Enviro. Management
- Alabama Marine Mammal Sighting Network
- Alabama River Alliance & Partner Organizations including Cahaba Riverkeeper, Coosa Riverkeeper, Black Warrior Riverkeeper, & Friends of Locust Fork River.
- Alabama Water Watch
- AmeriCorps VISTA
- Back Country Trail
- Baldwin County Trailblazers
- Boat People SOS
- Boy Scouts of America
- City Governments: Bayou La Batre, Daphne, Dauphin Island, Fairhope, Foley, Gulf Shores, Magnolia Springs, Mobile, Orange Beach, Prichard, & Spanish Fort
- Coastal Alabama Partnership
- Coastal Conservation Association of Alabama
- Coastal Land Trust
- Conservation Alabama
- County Governments: Mobile and Baldwin
- Delta Bike Project
- Dauphin Island Sea Lab
- Dog River Clearwater Revival
- Downtown Mobile Alliance
- Environmental Education Association of Alabama
- Environmental Law Institute
- Friends of Bon Secour National Wildlife Refuge
- Friends of the Mobile Tensaw Delta
- Girl Scouts of the USA
- Islands of Perdido Foundation
- Keep Mobile Beautiful
- League of Women's Voters
- Legacy, Partners for Environmental Education
- Mississippi-Alabama Sea Grant Consortium
- Mobilians on Bikes
- Mobile Bay Audubon Society

Business, Industry, and Higher Education

- A & M Peanut Shop
- Accents For Windows
- Adams IP
- Aerostar
- Alabama Gulf Seafood
- Allen, Allen & Foster
- American Sign & Advertising Company
- Bay Gourmet Catering Company
- Bay Radiology
- Bender Realty
- Bluegill Restaurant
- Bon Secour Fisheries
- Burns, Cunningham & Mackey
- Cabo Coastal Cantina
- Catherine Hall Designs
- Cooper Restaurants/Felix's Fish Camp
- Crowder Gulf
- Easter Shore Cycle
- EcoSolutions
- Ed's Seafood Shed
- Daphne Family Practice
- Georgia Roussos Catering
- Goodwyn Mills Cawood
- Gulf Adventure Center
- Gulf Chrysler
- Gwin's Printing
- Hand Arendall
- Hargrove Engineers
- Higher Ed: Auburn University; Columbia Southern University; Spring Hill College; University of Birmingham in Alabama; University of Alabama; & University of South Alabama
- Holcim, Inc.
- Laps on the Causeway
- Logical Computer Solutions
- Louis Berger Group
- Maynard Cooper and Gale
- McCarron Insurance
- Naman's Catering
- Panini Pete's
- Pro Cycle and Triathlon
- Regions Bank
- Schlinkert Sports Associates
- Sun Plans
- Thames Batre
- The Hampton Inn- Fairhope
- The Hangout
- The Lighthouse Restaurant
- Thompson Engineering
- Tonsmeire Properties

- Mobile Bay National Estuary Program
- Mobile Bay Sierra Club
- Mobile Baykeeper
- Mobile Botanical Gardens
- Mobile Co. Wildlife & Conservation Association
- National Fish and Wildlife Foundation
- Ocean Conservancy
- Ocean Foundation
- Partners for Environmental Progress
- Project CATE Foundation
- Team Share the Road
- The Good Life Foundation
- The Nature Conservancy
- U.S. Fish and Wildlife Service
- U.S. Green Building Council
- Weeks Bay Foundation
- Weeks Bay Research Reserve
- Wolf Bay Watershed Watch
- Youth Leadership Mobile
- Utilities: Alabama Power Company; Baldwin County Sewer; Daphne Utilities; Mobile Alabama Water and Sewage Systems; Mobile Gas; & Riviera Utilities
- Watershed
- White-Spunner Construction
- World Omni Financial Corporation

[Home](#) [Policy Board & Advisory Committees](#) [Documents](#) [Videos](#) [Interactive Map](#)

You are here: Home

PUBLIC NOTICES

What's coming down the pike? Find out right here! ...

[Continue Reading...](#)

EASTERN SHORE

FOR IMMEDIATE RELEASE:
October 1, 2013

PUBLIC

Eastern Shore MPO
ANG, T

LONG RANGE PLAN



The Long Range Transportation Plan (LRTP) is the instrument for coordinating the metropolitan long range transportation planning for the ...

SHORT RANGE PLAN



The Transportation Improvement Program (TIP) is a document which provides a list of projects to be initiated within a four year period. The ...

OTHER PLANNING DOCUMENTS



The MPO is charged with preparing numerous other planning documents including, but not limited to, the

[Read More...](#)

[Read More...](#)

documents listed below.
Completed ...

[Read More...](#)

Public Input Opportunity – Transportation Survey

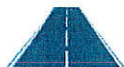
[Click here to complete the transportation survey](#)

How can I get involved?

Sign up for our newsletter to learn how you can be involved in the MPO!

[Sign Up Now!](#)

HIGHWAYS AND ROADWAYS



Want to learn more about projects and funding issues impacting your area? The links below will provide you with the information you need. ...

[Read More...](#)

PUBLIC TRANSIT



PUBLIC
TRANSPORTATION
SURVEY - Click here to complete the survey Is public transit available in your neighborhood? In ...

[Read More...](#)

BICYCLE AND PEDESTRIAN



Click here to view the 2014 Bicycle and Pedestrian Transportation Concept Traditionally, bicycle and pedestrian planning has catered ...

[Read More...](#)

CONTACT US:

Address:

Baldwin County Satellite
Courthouse
1100 Fairhope Ave
Fairhope, AL 36532

Phone:

(251) 990-4640

Email:

coordinator@easternshore
mpo.org

SEARCH

SEARCH THIS WEBSITE ...

DISCRIMINATION - TITLE VI COMPLAINTS

[Click here to view complaint
procedures and complaint
forms](#)

[Haga clic aquí para ver los
procedimientos de queja y
hojas de reclamaciones](#)

NEED LANGUAGE ASSISTANCE?

[Haga clic aquí para obtener
asistencia lingüística gratuita](#)

[Clique aqui para obter
assistência linguagem livre](#)

[点击这里免费语言协助](#)

[คลิกที่นี่เพื่อขอความช่วยเหลือ
ภาษาฟรี](#)

TRANSLATE

Select Language ▼

Eastern Shore MPO

ESMPO Encourages All To Become Involved

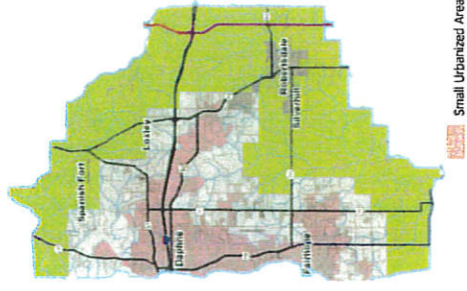
We pledge that public participation is solicited without regard to race, color, national origin, sex, age, religion, disability or family status. Persons who require special accommodations under the Americans with Disabilities Act or those requiring language translation services should contact the Eastern Shore MPO at 251-990-4643 or 251-990-4640

Asistencia de idiomas esta disponible poniendose en contacto con personal de la MPO en

coordinator@easternshorempo.org

Eastern Shore Metropolitan Planning Organization
1100 Fairhope Avenue
Fairhope, Alabama 36532
www.easternshorempo.org
Phone: 251-990-4640; 251-990-4643
E-mail: coordinator@easternshorempo.org

Eastern Shore Metropolitan Planning Organization
1100 Fairhope Avenue
Fairhope, Alabama 36532
www.easternshorempo.org



Eastern Shore Metropolitan Planning Organization
(ESMPO)
A TRANSPORTATION PLANNING ORGANIZATION

Primary Tasks of an MPO

Involve the Public

Encourage community involvement during the transportation planning process.

Establish and Manage a Fair and Impartial Transportation Process

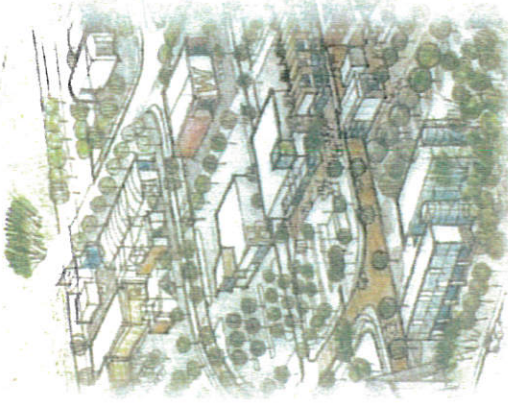
Ensure existing and future expenditures for transportation projects and programs are based on a continuing, cooperative, and comprehensive planning process. We do this by taking advice from advisory boards (see picture to right), soliciting input through open meetings, disbursement of mailers to underserved populations, arranging open public comment periods, and by ESMPO personnel being available to the public.

Prepare Planning Documents for Metropolitan Planning Area (MPA)

The ESMPO compiles primary planning documents including: The Unified Planning Work Program (MPO Planning Budget), the Long Range Transportation Plan (20 year transportation plan), the Transportation Improvement Plan, (also known as the TIP, a four year transportation plan); the Public Participation Plan (how the public can be involved) and the Bicycle and Pedestrian Concept.

About the ESMPO

The Eastern Shore Metropolitan Planning Organization, also known as the ESMPO, is a transportation planning organization comprised of Member Governments along the Eastern Shore of Baldwin County. These member governments include the City of Daphne, Fairhope, and Spanish Fort; the Town of Loxley and land areas of Baldwin County in between and near these member communities (see map on front).



What and Why an MPO?

Transportation Planning includes all modes of transportation: including vehicular, pedestrian and bicycle. The MPO is established and funded through the Federal Highway Administration (FHWA).

MPO's are established once an area reaches 50,000 in population. The Eastern Shore MPO was formed following the 2010 Census.



Contact Us!

Sarah Hart Slade, ESMPO Coordinator, shart@baldwincountyal.gov
Jennifer Fidler, ESMPO Tech. Jentiller.fidler@baldwincountyal.gov
Visit our Website: www.easternshorempo.org
Like us on Facebook



Eastern Shore Metropolitan Planning Organization (ESMPO)
1100 Fairhope Avenue
Fairhope, Alabama 36532

www.easternshorempo.org
Phone: 251-990-4640; 251-990-4643
E-mail: coordinator@easternshorempo.org

A Guide to Local Traffic Improvements

ITS, Diverging Diamond & Roundabouts



ESMPO - A Federally Funded
Transportation Planning Organization

Intelligent Transportation Systems (ITS)

Coming Soon...Adaptive Traffic Signal!

The ITS system is a SCOOT system - The Software and Hardware collects and uses real-time data to adjust traffic signal timing to improve thru-time.

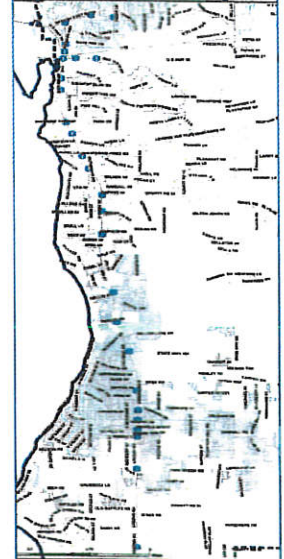
- ITS builds roadway capacity without adding additional lanes.
- Signals are connected to each other and to the system using fiberoptic network.
- Detection includes wireless sensors and traffic cameras.
- Servers and camera feed is housed at the ALDOT Traffic Management Center in Mobile.
- The SCOOT system can improve capacity from 10%-50%.
- We will see gradual improvements as the system is online and collecting data. The longer it is online, the better it will work (to a certain threshold).
- The US 98 system is expected to be fully online and operational Summer 2018 (June).
- Side streets may experience longer wait times at signals (US 98 will be a priority).
- The Adaptive Signal project Covers 28 Intersections - From Westminster Blvd. in Spanish Fort To CR 32 in Fairhope.

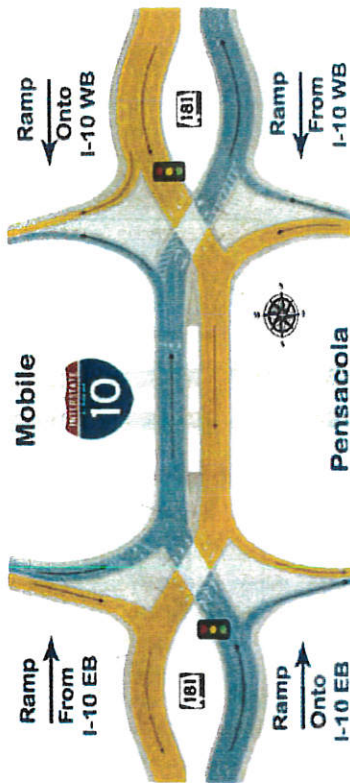
The US 98 Adaptive Traffic Signal project is a cooperative effort between: ESMPO, ALDOT, City of Fairhope, City of Daphne, City of Spanish Fort, and the Baldwin County Commission.

ALDOT's Traffic Management Center - Mobile



US 98 Adaptive Traffic Signals





Diverging Diamond Intersections (DDI)

A DDI moves more traffic and reduces congestion better than a conventional interchange. Dangerous left-hand turns across free-flowing traffic are eliminated on exits from SR-181 onto I-10 resulting in more efficient traffic flow and fewer accidents. DDIs have fewer conflict points. While there are 26 possible points of conflict in a conventional interchange, there are only 14 in a DDI, and they are spread throughout the interchange. DDIs have better visibility because they eliminate cross-traffic turns. Data on existing DDIs indicate a 60 percent reduction of collisions over conventional interchanges. Crashes that may occur are generally of lower severity than crashes observed in conventional interchanges.

How to Navigate a DDI

Motorists on SR-181 will proceed through the first traffic signal and follow their lane to the opposite side of the road. Traffic accessing I-10 will turn left on to the ramp.

Through traffic will continue to the second traffic signal and follow their lane back to the right side of the road.

Traffic on I-10 will access exiting ramps to enter SR-181.

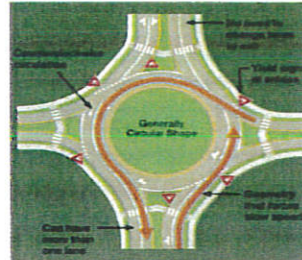
For more information:
http://tp.dot.state.al.us/10_SR_181/

Roundabouts

A roundabout is a type of circular intersection with yield control of entering traffic, islands on the approaches, and appropriate roadway curvature to reduce vehicle speeds.

Modern roundabouts are different from rotaries and other traffic circles. For example, roundabouts are typically smaller than the large, high-speed rotaries still in use in some parts of the country. In addition, roundabouts are typically larger than neighborhood traffic circles used to calm traffic. A roundabout has these characteristics:

- Improve safety
- More than 90% reduction in fatalities*
- 76% reduction in injuries**
- 35% reduction in all crashes**
- Slower speeds are generally safer for pedestrians
- Reduce congestion
- Efficient during both peak hours and other times
- Typically less delay
- Reduce pollution and fuel use
- Fewer stops and hard accelerations, less time idling
- Save money
- Often no signal equipment to install, power, and maintain
- Smaller roundabouts may require less right-of-way than traditional intersections
- Often less pavement needed
- Complement other common community values
- Quieter operation
- Functional and aesthetically pleasing (Credit-FHWA)



Compared to other types of intersections, roundabouts have demonstrated safety and other noted benefits.



Traffic Roundabout in Fairhope, inset depicts an aerial view at night.

Also See: [Visit Coastal Alabama](#) • [Build The I-10 Bridge](#) • [Coastal PAC](#)



[OVERVIEW](#)

[LEADERSHIP](#)

[NEWS & EVENTS](#)

[PARTNER PROGRAMS](#)

[CONTACT](#)



Vision, direction and action for the future of Baldwin and Mobile Counties

Coastal Alabama Partnership functions as both a force and a resource for our region. The scope of our effort exceeds a single community. We leverage the strength of every area of our two counties to focus on what is important for Coastal Alabama.

BACKGROUND

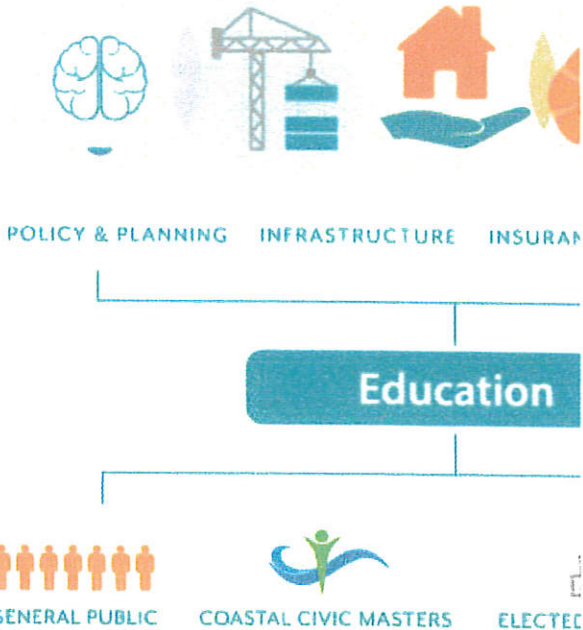
Coastal Alabama Partnership was conceived when key community leaders recognized the need for a standing organization to bridge the various entities in our two counties. Together we work in concert toward the priorities that will ensure our unparalleled quality of life.

MISSION

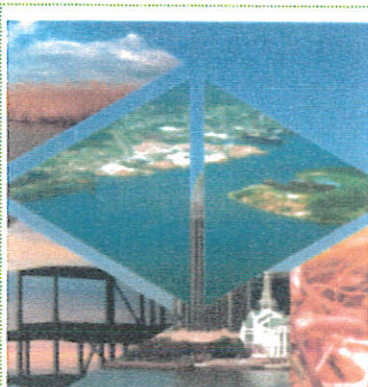
Coastal Alabama Partnership’s mission is to enable and unify business and political leadership in their pursuits of improving our quality of life by collaborating on improving infrastructure, education, and governmental services.

VISION

Coastal Alabama Partnership’s vision is for Coastal Alabama to become a globally competitive destination recognized around the world as THE place to work, live, and play, because of the unique quality of life found in our region.



Latest News and Events



Coastal Leaders Travel to Montgomery

For the fourth year, Coastal Alabama Partnership hosted a trip to Montgomery to meet with State leadership regarding issues important to our region. On January ... [Read More »](#)

CAP Releases 2018 Legislative Agenda

Coastal Alabama Partnership 's 2018 Regional Legislative Agenda supports the efforts of the nine economic development entities in Coastal Alabama representing over 4,700 businesses and nearly 150,000 employees ... [Read More »](#)

Coastal Alabama Loses a Leader

Coastal Alabama lost a leader this week. Ed Rodriguez, CEO and President of the Coastal Alabama Business Chamber, passed away last Thursday. Ed was a ... [Read More »](#)

251-436-8822 • 1 South Royal Street, 2nd Floor • P.O. Box 881 • Mobile, AL 36601 • contact@coastalalabama.org

© Copyright 2017 Coastal Alabama Partnership / Coastal Alabama Partnership is a 501c3 non-profit organization.

Also See: Visit Coastal Alabama • Build The I-10 Bridge • Coastal PAC

[OVERVIEW](#)[LEADERSHIP](#)[NEWS & EVENTS](#)[PARTNER PROGRAMS](#)[CONTACT](#)

Overview / About Us

While Coastal Alabama Partnership exists to provide vision, direction and action for our region, it might be helpful to clarify what we are not.



We are not a chamber of commerce, but many of our volunteers are part of local chambers of commerce. We are not an economic development commission, although we work with

municipalities to identify economic opportunities and bring them to our region.

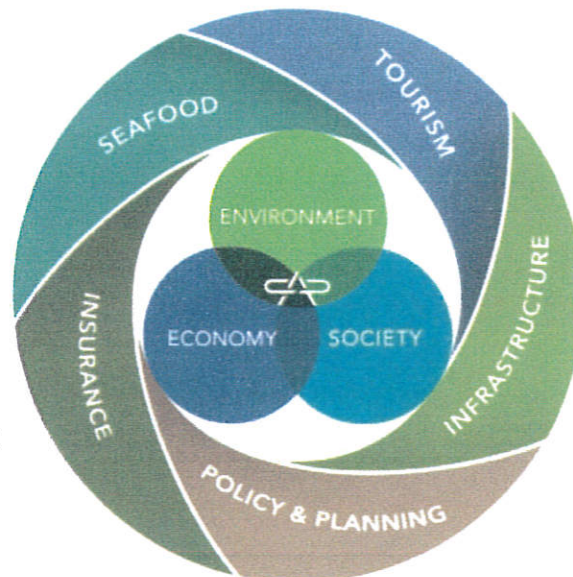
- **We are not a tourism development council**, yet our board includes members of those organizations and, in fact, we want to see tourism flourish and grow throughout our region.
- **We are not a body of elected officials**. We're a resource to our municipal leaders to help them coordinate and implement a strategic plan for the region.
- **We are not a replacement for any organization**, past or present.

Simply put, Coastal Alabama Partnership is a point of contact for getting things done across the counties that border Alabama's Gulf Coast. We make it possible for individuals and entities to work together to achieve major initiatives that will help our region move forward, spurring smart growth while maintaining an enviable quality of life.

The Coastal Alabama Partnership has identified several areas of focus. Here are some of our key initiatives.

Policy & Planning Initiative

We're partnering with a coalition of regional stakeholders to develop and implement a Strategic Regional Plan. As part of this initiative, our [2018 Legislative Agenda](#) focuses on important regional issues.



Insurance Initiative

We're striving to identify the full scope of the insurance crisis along the Gulf Coast. We seek solutions that will lower insurance premiums, improve building codes and encourage fortification programs for existing homeowners. We also want to market the region to insurance companies as an investment, not a liability.

Tourism Initiative

We're teaming up with the region's tourism authorities to brand and promote Coastal Alabama as a regional tourism destination for national and international markets.

Seafood Initiative

To ensure the survival, growth and prosperity of one of our region's most valuable industries, we're working with the private sector to improve operating and processing capacities. We will advocate for the protection and promotion of Gulf seafood.

Infrastructure Initiative

We actively partner with efforts to identify and seek funding to build the infrastructure needed for our region to be more efficient and attractive to businesses and investors.

251-436-8822 • 1 South Royal Street, 2nd Floor • P.O. Box 881 • Mobile, AL 36601 •
contact@coastalalabama.org

© Copyright 2017 Coastal Alabama Partnership / Coastal Alabama Partnership is a 501c3 non-profit organization.

Also See: Visit Coastal Alabama • Build The I-10 Bridge • Coastal PAC

[OVERVIEW](#)[LEADERSHIP](#)[NEWS & EVENTS](#)[PARTNER PROGRAMS](#)[CONTACT](#)

Partner Programs

Coastal Alabama Partnership works with many regional organizations to further our shared missions. Below are a few of our partners with whom we work most closely.

FORTIFIED

FORTIFIED is the new normal in construction and Alabama leads the nation in this innovative approach to strengthening residential housing infrastructure. The FORTIFIED Home™ program is a national construction standard based on 20 years

of scientific testing and research. The building method strengthens and protects new and existing homes from damage caused by hurricanes, high wind, hail and thunderstorms. In Alabama and Mississippi, homeowners who build or re-roof to the standard can save up to 50 percent on their wind insurance premiums.



A program of the Insurance
Institute for Business & Home Safety

Developed by the [Insurance Institute for Business and Home Safety \(IBHS\)](#), FORTIFIED utilizes third-party "Evaluators" to ensure homes are built to the highest standards. These independent inspectors gather vast amounts of information about each home and document the products and methods used to construct the building. Once work is complete, the Evaluator sends the documentation to engineers at IBHS for verification and final designation as a FORTIFIED home. FORTIFIED applies a building block approach with multiple certification levels of

Bronze, Silver and Gold, starting with the roof as the most important component of any building.

Visit www.smarthomeamerica.org for more information or to build FORTIFIED today.

- [Find a FORTIFIED contractor](#)
- [Find a FORTIFIED Evaluator™](#)

The FORTIFIED Home program is growing thanks to the work of Smart Home America. Please contact Julie Shiyu-Woodard at julie@smarthomeamerica.org or (855) 742-7233 ext.1 with any questions.

Create a Clean Water Future

Create a Clean Water Future is a public service campaign to help Alabama residents learn more about stormwater runoff and its impacts; increase demand for stormwater management programs; and provide tools that empower individuals and communities to reduce polluted runoff in our waterways. The campaign was developed to address limitations of local governments to fully adopt stormwater management programs and a need to help Alabama residents understand the link between reducing polluted runoff and the preservation of a unique way of life built on Alabama's waterways. By joining the Create a Clean Water Future campaign, you are helping protect the Alabama all of us want to pass on to future generations. Visit www.cleanwaterfuture.com for more information.



Create a Clean Water Future Campaign is facilitated by the Mobile Bay National Estuary Program along with its partners. Please contact Rick

Frederick at rfrederick@mobilebaynep.com or (251) 380-7941 with any questions.

Delta Roundtable

The Mobile-Tensaw River Delta is a natural wonder treasured by locals and visitors alike. Many are interested in ensuring the protection of its unique wilderness, biodiversity and waterways along with expanding upon its economic



value. Yet, the topic of its conservation has divided the region over the years in many ways.

In an attempt to encourage consensus about the future care of the Delta, CAP, in partnership with the Delta Working Group and Dauphin Island Sea Lab (DISL), created the Delta Roundtable in June 2014. The roundtable consists of roughly 40 diverse stakeholders interested in the well-being and future of the Delta. Please see the archives below for meeting minutes and updates on the roundtable's activities.

[Click here to access Members-Only Page](#)

The Delta Roundtable is facilitated by the Delta Working Group and Coastal Alabama Partnership. Please contact Mary Mullins (mmullins@mpactpublicaffairs.com) or Wiley Blankenship (wiley@coastalalabama.org) with any questions.

Regional Tourism Council



The Regional Tourism Council (RTC) was formed in 2013 in an effort to work together to promote tourism regionally. The council is comprised of eight destination marketing organizations in Mobile and Baldwin counties that are funded by lodging tax. The founding entities of the

RTC are Gulf Shores and Orange Beach Tourism, Visit Mobile, Coastal Alabama Business Chamber, South Baldwin County Chamber of Commerce, South Mobile County Tourism Authority, City of Foley, North Baldwin Chamber of Commerce, and the Eastern Shore Chamber of Commerce. This is the first time the eight tourism entities have agreed to formally work together for the good of the region.

Since its creation, the council has identified objectives to better tourism opportunities and promotion for our region. These include:

- Promote the entire region as a travel destination;
- Create a regional brand that identifies diverse attractions along the Gulf Coast;
- Advocate for improved infrastructure to link the communities and attractions for easier travel;
- Identify voids in events and activities and ways to extend the tourism season beyond the typical Memorial-to-Labor Day period.

In order to promote this incredible destination Coastal Alabama Partnership (CAP) and the RTC has collaborated to create a [regional tourism website](#). The development of this website is truly a historic task, as it is the first time Coastal Alabama has put our assets together as one. The site will provide you with a one-stop-shop of information on tourism opportunities available in our region, and it shows the world our uniqueness and the diversity of our area as a whole. [Click here](#) to learn more about tourism opportunities in Coastal Alabama.

The RTC is facilitated by Coastal Alabama Partnership. Please contact Wiley Blankenship (wiley@coastalalabama.org) with any questions.

Build the I-10 Bridge Coalition

Since the late 1990s, Mobile citizens and community leaders have advocated for a bridge over the Mobile River and widening the I-10 Bayway



to alleviate traffic through the Wallace Tunnel on I-10.

In 2011, the Build the Bridge I-10 Coalition was formed by the Mobile Area Chamber of Commerce to seek community support for a new bridge and widening of the I-10 Bayway from four to six lanes. In July 2014, the Coastal Alabama Partnership (CAP) joined the effort to cultivate regional support for the project by reaching out to key constituents in Texas, Louisiana, Mississippi, northern Alabama and Florida.

The Coalition has worked diligently with the maritime community, elected officials and local business and industry representatives to determine the best location with the least negative impact on the regional business community and environment.

The Build the I-10 Bridge Coalition consists of many partner members, including representatives from the organizations below, Congressman Bradley Byrne and our chairmen, Mike Lee and Bill Seifert.

In 2014, the coalition partnered with CAP to develop a regional website to educate, promote and advocate the need for development of I-10 Bridge: www.buildthei10bridge.com. Please visit this website to receive latest news, analyses, and activities regarding the bridge project.

The Build the I-10 Bridge Coalition is facilitated by The Mobile Area Chamber of Commerce and Coastal Alabama Partnership. Please contact Kellie Hope (KHope@mobilechamber.com) or Wiley Blankenship (wiley@coastalalabama.org) with any questions.

251-436-8822 • 1 South Royal Street, 2nd Floor • P.O. Box 881 • Mobile, AL 36601 •
contact@coastalalabama.org

© Copyright 2017 Coastal Alabama Partnership / Coastal Alabama Partnership is a 501c3 non-profit organization.

334-353-1969



ALABAMA
SOIL & WATER
CONSERVATION
COMMITTEE

Home

About

Find Your District

Resources

Education

News & Events

Conserve Alabama

Associations

Voluntary, Incentive-Based, Locally-Led Conservation

Conserving Alabama's Natural Resources for Future Generations



Conservation Districts developed out of a dire national need to implement soil erosion control practices and revive farmland.

Take Bold Steps for Conservation.

Explore your area and begin conserving today. Find your county and learn about what resources are available to you.

[Select your county](#)

Show us your photos showcasing what makes Alabama beautiful.

Tag your photos with
#conservealabama
to give us permission to repost them to
our site and social media.





News

AACD-SUPPORTED LEGISLATION TARGETS FUNDING FOR IRRIGATION

May 21, 2018

NEWS FROM NATIONAL ASSOCIATION OF CONSERVATION DISTRICTS: VAN DYKE OF NEW MEXICO ASSUMES NACD HELM

February 6, 2017

2016 AACD AWARD WINNERS

December 21, 2016

Events

There are no upcoming events.

ABOUT US

Established by the Legislature in 1939, SWCC advances locally-led natural resource conservation by cooperating with local, state, and federal entities to practice and promote soil and water stewardship.

CONTACT US

Soil & Water Conservation Committee
P.O.Box 304800 / Montgomery,
AL 36130-4800 / 334.242.2620

SOCIAL MEDIA



**ALABAMA
SOIL & WATER
CONSERVATION
COMMITTEE**

© 2018 All rights reserved.

Web Development by Kindred Technology Group

334-353-1969



ALABAMA
SOIL & WATER
CONSERVATION
COMMITTEE

[Home](#)

[About](#)

[Find Your District](#)

[Resources](#)

[Education](#)

[News & Events](#)

[Conserve Alabama](#)

[Associations](#)

District List

[Home](#) / [District List](#)

[A-B](#) / [C-D](#) / [E-F](#) / [G-H](#) / [I-J](#) / [K-L](#) / [M-N](#) / [O-P](#) / [Q-R](#) / [S-T](#) / [W](#)

Autauga

Autauga County Conservation District

2226 Hwy. 14 West, Suite A

Autaugaville, Alabama, 36003-2540

Phone: 334-365-5532

Email: autauga@alconservationdistricts.org

Staff:

Paula Adams, District Administrative Coordinator

Baldwin

Baldwin County Conservation District

207 Faulkner Dr., Suite 107

Bay Minette, Alabama, 36507

Phone: 251-937-3297

Email: baldwin@alconservationdistricts.org

Staff:

Rhonda Bryars, District Administrative Coordinator

Barbour

Barbour County Conservation District

18 Nern St.

Clayton, Alabama, 36016

Phone: 334-775-3266

Email: barbour@alconservationdistricts.org

Staff:

Carol Threatt, District Administrative Coordinator

Bibb

Bibb County Conservation District

183 SW Davidson Drive

Centreville, Alabama, 35042-0598

Phone: 205-926-4360

Email: bibb@alconservationdistricts.org

Staff:

Debbie Clements, District Administrative Coordinator

Blount

Blount County Conservation District

55545 U.S. Hwy. 231 Ste. A

Oneonta, Alabama, 35121

Phone: 205-274-2363

Email: blount@alconservationdistricts.org

Baldwin County Commission

FY 2018 Budget Detailed Expenditures

Fund	00001	General Fund							
Dept	51990	Miscellaneous Appropriations							
Object Act	Sub Act	Description	FY 2014	FY 2015	FY 2016	FY 2017 YTD	FY 2017 Budget	FY 2018 Budget	
5121		Workmans Comp	-	-	-	-	-	-	-
5129		Disability	-	-	-	-	-	-	-
5150	001	Lobbying Firm Contract	132,277	114,461	114,079	104,585	114,000	114,000	-
5150	002	Lobbying Contract Callahan	-	-	-	-	-	-	-
5150	003	Lobby Contract Adams & Reese	-	-	54,000	66,000	72,000	72,000	-
5150	004	Lobby Cont Christie Strategy G	-	-	31,500	31,500	42,000	42,000	-
5150	005	Consulting - DSD Serv Group	-	-	-	7,720	24,000	24,000	-
5230		Landscaping	-	-	-	-	-	7,500	-
5290		Misc Appr From Contingency	8,700	8,700	-	28,489	-	1,101,658	-
5294		Chamber of Commerce Alliance	2,000	2,000	2,000	2,000	2,000	4,000	-
5296		MOSQUITO SPRAYING	-	-	-	-	-	-	-
5299	002	VOAD	-	-	-	-	-	-	-
5299	003	BC Heritage Museum	25,000	15,000	15,000	15,000	15,000	15,000	-
5299	0031	BC H Museum: Waiving Ent Fee	2,800	3,200	3,200	3,200	3,200	3,200	-
5299	004	Battleship Park	10,000	-	-	-	-	-	-
5299	005	W Florida Reg. Planning Coun	19,073	13,098	13,110	12,907	11,601	12,907	-
5299	007	Board of Education Approp	-	-	-	-	-	-	-
5299	008	Eastern Shore MPO	-	-	-	-	-	-	-
5299	009	Juvenile Court Appropriation	16,999	-	-	-	-	-	-
5299	011	Coastal AL Partnership	-	-	-	25,000	25,000	25,000	-
5299	012	SW AL Workforce Development	-	-	-	22,500	22,500	22,500	-
5299	013	Indigent Care Res. 2017-089	-	-	-	745,755	-	-	-
5299	014	Corte Rd Appropriation	-	-	-	-	-	200,000	-
5332		S A R P C	81,582	85,415	85,415	83,544	85,415	89,686	-
5342		Comm Discretionary Fund	16,931	6,155	4,500	4,500	25,000	25,000	-
5343		One Half Red Cross Disaster	-	-	-	-	-	-	-
5344		Mobile Bay Natl Estuary Prog	-	-	10,000	-	-	50,000	-
5345		Lillian Rec Center	1,200	1,200	1,200	1,200	1,200	1,200	-
5346		Mental Retard for Transport	30,000	30,000	30,000	30,000	30,000	30,000	-
5349		Transportation: Birdfest	-	-	-	-	-	-	-
5350		Trans Intl Baccalaureate	-	-	-	-	-	-	-
5352		Historical Commission	-	4,800	-	60,000	60,000	60,000	-

Baldwin County Commission

Fund 00001 General Fund
Dept 51990 Miscellaneous Appropriations

FY 2018 Budget
Detailed Expenditures

FY 2017 YTD

Object Act	Sub Act	Description	FY 2014	FY 2015	FY 2016	August	FY 2017 Budget	FY 2018 Budget
5358		Library Services	-	-	7,500	-	-	-
5358	01	Library Ser: 1/2 Video T	-	-	-	-	-	-
5362		Bay Minette Rotary Club	500	500	500	500	500	500
5367		Blueprint for Tomorrow	-	-	-	-	-	-
5368		Literacy Councils	-	-	-	-	-	-
5370		Baldwin Housing Alliance	-	-	-	-	-	-
5371		Gulf Coast RC&D Board	3,000	-	3,250	3,250	3,250	3,250
5376		North Baldwin Search/Rescue	-	-	-	-	-	-
5377		Lower Alabama Search/Rescue	-	-	-	-	-	-
5378		SW AL Abuse Network	-	-	-	-	-	-
5379		B. C. Sheriff Boys Ranch	-	-	-	-	-	-
5381		Daphne Search & Rescue, Inc.	-	-	-	-	-	-
5390		Alabama CoOp Ext Service	51,380	51,380	51,380	53,854	53,854	53,854
5390	01	Ext Service Telephone	-	-	-	-	-	-
5400		BC Soil & Water Conservation	64,438	64,438	64,438	64,438	64,438	75,500
5400	001	Water Shed Coor Allocation	-	-	-	-	-	41,500
5410		BC Econ Develope Alliance	300,000	300,000	350,000	350,000	350,000	350,000
Totals		51990 Miscellaneous Appropriations	\$ 765,880	\$ 700,347	\$ 841,072	\$ 1,715,942	\$ 1,004,958	\$ 2,424,255

Baldwin County Commission

Fund 00001 General Fund
Dept 51990 Miscellaneous Appropriations

FY 2019 Budget
Detailed Expenditures

Object Act	Sub Act	Description	FY 2015	FY 2016	FY 2017	FY 2018 YTD August	FY 2018 Budget	FY 2019 Budget
5121		Workmans Comp	-	-	-	-	-	-
5129		Disability	-	-	-	-	-	-
5150	001	Lobbying Firm Contract	114,461	114,079	114,085	104,605	114,000	114,000
5150	002	Lobbying Contract Callahan	-	-	-	-	-	-
5150	003	Lobby Contract Adams & Reese	-	54,000	72,000	66,000	72,000	72,000
5150	004	Lobby Cont Christie Strategy G	-	31,500	42,000	31,500	42,000	42,000
5150	005	Consulting - DSD Serv Group	-	-	12,160	22,840	24,000	24,000
5230		Landscaping	-	-	-	7,500	7,500	-
5290		Misc Appr From Contingency	8,700	-	28,489	24,414	904,778	200,000
5294		Chamber of Commerce Alliance	2,000	2,000	2,000	4,000	4,000	4,000
5296		MOSQUITO SPRAYING	-	-	-	-	-	-
5299	002	VOAD	-	-	-	-	-	-
5299	003	BC Heritage Museum	15,000	15,000	15,000	15,000	15,000	15,000
5299	0031	BC H Museum: Waiving Ent Fee	3,200	3,200	3,200	3,200	3,200	3,200
5299	004	Battleship Park	-	-	-	-	-	-
5299	005	W Florida Reg. Planning Coun	13,098	13,110	12,907	13,891	12,907	13,891
5299	007	Board of Education Approp	-	-	-	-	-	-
5299	008	Eastern Shore MPO	-	-	-	-	-	-
5299	009	Juvenile Court Appropriation	-	-	-	-	-	-
5299	011	Coastal AL Partnership	-	-	25,000	25,000	25,000	25,000
5299	012	SW AL Workforce Development	-	-	22,500	22,500	22,500	22,500
5299	013	Indigent Care Res. 2017-089	-	-	745,755	-	-	-
5299	014	Corte Rd Appropriation	-	-	-	-	-	-
5332		S A R P C	85,415	85,415	83,544	89,686	89,686	89,832
5342		Comm Discretionary Fund	6,155	4,500	4,500	5,050	25,000	25,000
5343		One Half Red Cross Disaster	-	-	-	-	-	-
5344		Mobile Bay Natl Estuary Prog	-	10,000	-	50,000	50,000	50,000
5345		Lillian Rec Center	1,200	1,200	1,200	1,200	1,200	1,200
5346		Mental Retard for Transport	30,000	30,000	30,000	-	30,000	30,000
5349		Transportation: Birdfest	-	-	-	-	-	-
5350		Trans Intl Baccalaureate	-	-	-	-	-	-

Baldwin County Commission

Fund 00001 General Fund
Dept 51990 Miscellaneous Appropriations

FY 2019 Budget
Detailed Expenditures

Object Act	Sub Act	Description	FY 2015	FY 2016	FY 2017	FY 2018 YTD August	FY 2018 Budget	FY 2019 Budget
5352		Historical Commission	4,800	-	60,000	60,000	60,000	60,000
5358		Library Services	-	7,500	-	-	-	-
5358	01	Library Ser: 1/2 Video T	-	-	-	-	-	-
5362		Bay Minette Rotary Club	500	500	500	500	500	500
5367		Blueprint for Tomorrow	-	-	-	-	-	-
5368		Literacy Councils	-	-	-	-	-	-
5370		Baldwin Housing Alliance	-	-	-	-	-	-
5371		Gulf Coast RC&D Board	-	3,250	3,250	3,250	3,250	3,250
5376		North Baldwin Search/Rescue	-	-	-	-	-	-
5377		Lower Alabama Search/Rescue	-	-	-	-	-	-
5378		SW AL Abuse Network	-	-	-	-	-	-
5379		B. C. Sheriff Boys Ranch	-	-	-	-	-	-
5381		Daphne Search & Rescue, Inc.	-	-	-	-	-	-
5390		Alabama CoOp Ext Service	51,380	51,380	53,854	53,854	53,854	53,854
5390	01	Ext Service Telephone	-	-	-	-	-	-
5400		BC Soil & Water Conservation	64,438	64,438	64,438	75,500	75,500	75,500
5400	001	Water Shed Coor Allocation	-	-	-	-	41,500	-
5410		BC Econ Develop Alliance	300,000	350,000	350,000	350,000	350,000	380,000
Totals		51990 Miscellaneous Appropriations	\$ 700,347	\$ 841,072	\$ 1,746,382	\$ 1,029,490	\$ 2,027,375	\$ 1,304,727

Eastern Shore MS4 Annual Meeting Minutes

10-12-17 @ 1:30pm

ES MS4 Representatives:

ALDOT: Evan Davis, Macey Taylor & Cheyenne West

Baldwin County: Celena Boykin, Vince Jackson

City of Daphne- Ashley Campbell

City of Fairhope- Kim Burmeister

City of Spanish Fort- Casey Rains



Topics Discussed:

ALDOT's Items

1. Evan gave an overview of ALDOT's Individual MS4 Permit Coverage
 - ALDOT's permit is a state wide permit
 - ALDOT is completing their state wide mapping & sampling
2. Evan introduced Macy and Cheyenne. Macy is with the maintenance department. She helps with local education outreach events and Cheyenne is with public relations. Cheyenne stated that she is using Twitter social media to reach the public about ALDOT events.
3. ALDOT events and additional comments:
 - Clean Mobile-Government Street trash clean up-20cy of trash was removed
 - September-Lunch & Learn –Erosion & Sediment Training
 - Coastal Cleanup-ADCNR Event
 - Clear water Alabama-November 1 & 2, Mobile Convention Center

Baldwin County's Items:

1. Vince asked to be added back to the ES MS4 email list
2. Vince discussed the County's MS4. The county's MS4 covers a very small area of the County. The County's MS4 is managed in the Highway Department. The County has hired a new environmental position, Peyton Rogers. The new position will be helping with the MS4 program.
3. Baldwin County events and additional comments:
 - Co-host Rain Barrel Workshop
 - County is funding the MBNEP this year
 - County will gladly host future events

Spanish Fort's Items:

1. Casey asked that Chester, Spanish Fort's new building official, be added to the ES MS4 email list.
2. Spanish Fort passed its Clean Water Ordinance which addresses the City's MS4 Permit.
3. The Clean Water Ordinance addresses the following:
 - 1000sf land disturbance permit
 - Best Management Practices Plan for residential lots
 - Residential lot erosion and sediment control inspection
 - Post Construction Maintenance
4. Spanish Fort is supporting the Mobile Bay National Estuary Program
 - MBNEP initiated a sediment study of the Bay Minette Creek Basin
 - The City and MBNEP seeking future grant funding through BP funds and/or NRCS
5. Spanish Fort events and additional comments:
 - The City has a new 32 acre park on Jimmy Faulkner Drive
 - The City is dealing with severe stream channel erosion along tributaries in the Spanish Fort Estates along sewer lines.
 - Spanish Fort co-sponsors local rain barrel workshops.

Fairhope's Items:

1. Kim discussed Fairhope storm water program, stormwater outfall mapping and illicit discharge
2. Fairhope's events and additional comments:
 - Earth Day MS4 Booth
 - Coastal Clean Up
 - Environmental Board
 - Storm drain marker installation
 - Possibility of rain barrel workshop at the next Earth Day

Daphne's Items:

1. Ashley discussed the City's ADEM 319 Grant Education Outreach partnership with the Alabama Cooperative Extension Systems Master Environmental Educators

Program. She mentioned the upcoming training in January, 2018. The MEE is an excellent opportunity to provide schools with stormwater education.

2. Ashley discussed the City's financial support of the MBNEP.

3. Ashley mentioned the Fish River Watershed Management Plan's effort to educate Property Owner Associations (POA) on the importance of detention basin maintenance and inspection. The Weeks Bay Research Reserve is working with local cities to create a template Operation and Maintenance guide for POA for long term maintenance and operation of private storm water facilities. The template will be help MS4's reach permit compliance.

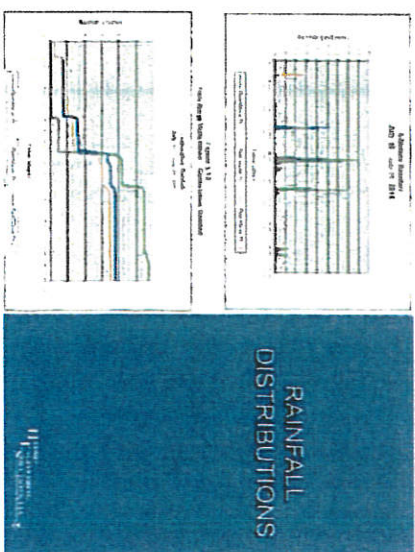
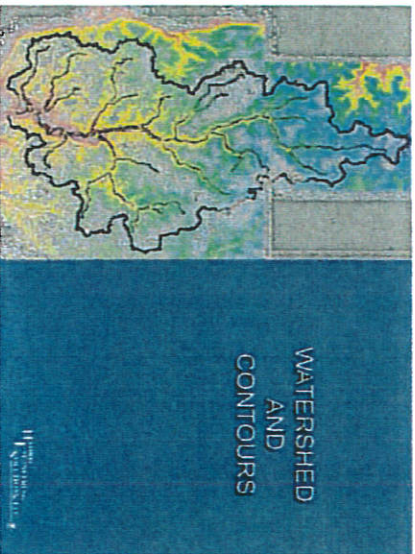
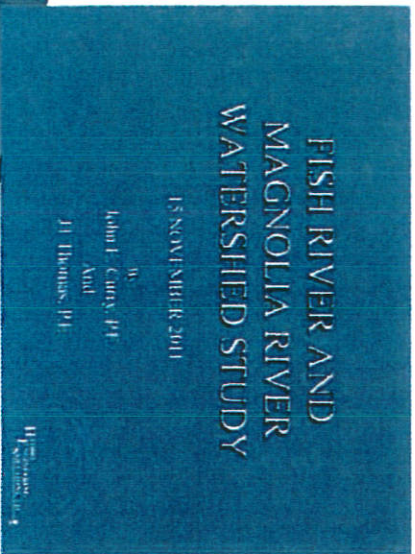
4. Ashley discussed the lack of participation at the Jubilee Festival's Rain Barrel Workshop. No one register prior to or the day of the workshop. The group discussed the fact that the last few workshops have had low participation. Ashley mentioned that she and Christian Miller with the MBNEP discussed the lack of participation. They agreed that an online video with the opportunity to pick up the rain barrel at local cities may be the answer. Daphne will continue the discussion with MBNEP and update the ES MS4s once a decision is made.

5. Ashley mentioned that the ADEM would be auditing the ES MS4 Cities in February, 2018.

The group discussed other education outreach opportunities in 2018. The group agreed to meet early in 2018 to plan the next event.

The meeting adjourned at 2:30pm

Local Partnerships



GIL MARENTE, P.E.
COUNTY ENGINEER

Or

Commissioner Fawn Bell, Jr.
Commissioner Tucker Dorsey
Commissioner Quana T. "Sue" Grady
Commissioner James E. "Bud" Smith
Jody Turney, P&C Construction Manager
Steph Perrault, Permit/Dispatch Manager

- Town of Silverhill
- Town of Summerdale
- Town of Loxley



The Honorable Charles H. Murphy

Re: Fish River & Meghoolia Rivers Watershed Study

A study on the Fifth River and Laguna River watersheds was performed to gain an understanding of each watershed and determine their suitability to limit use changes to insect exporting from the near future. We used the following steps: we chose a study area with a copy of the report because our jurisdiction consists of areas that are located on one or both of the above mentioned watersheds; a map showing the watershed boundaries is attached.

This is to request that the city use the attached information for post disaster remediation. The information from the attached study can be used for future storm planning and was incorporated into the latest edition of the *Atlantic County Seashore Regulations*, Figure 2-11 of the study shows the Fish River watershed and breaks it into two areas. The areas located north of the red line are what the red line is the Fish River are required to detain the 2, 5, 10, 25, 50, and 100 year storm events. What is north of the Fish River watershed is required to detain the 2, 5, 10, 25, 50, and 100 year storm events. The state of Maryland does not require a requirement to detain the 2, 5, 10, 25, 50, and 100 year storm events.

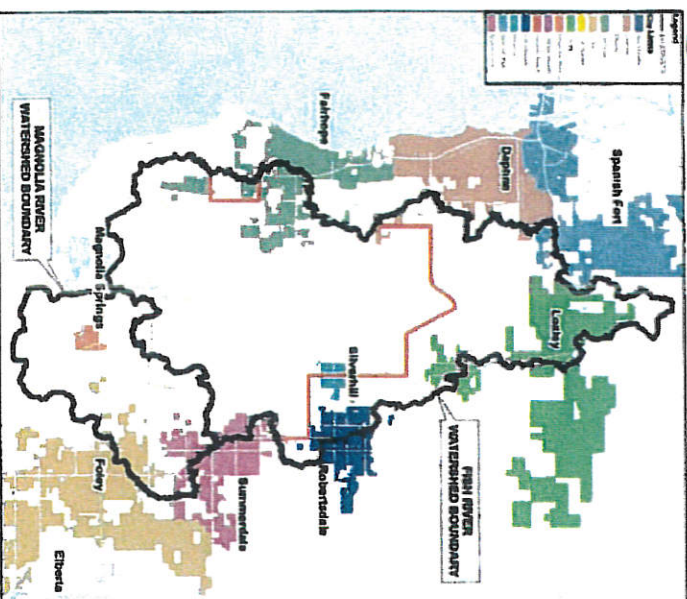
We hope that this study will be beneficial to you when overseeing future development in your jurisdiction. If you or any of your staff have questions and would like more information about the study and how we can work together to help manage the watershed, please let me know.

If you need further assistance, please feel free to contact me at (251) 337-0371

Sincerely,

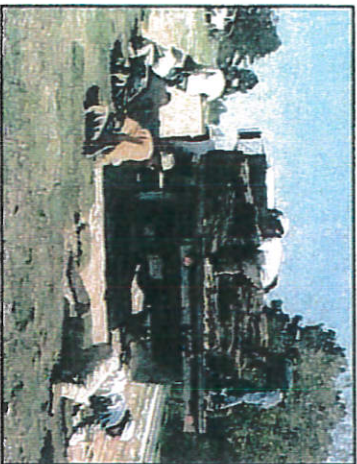
Continued from Page 10

Cy **Contractors Firms, Inc.**
Commissioner Tucker Dancy
Contractors Curtis F. "Skip" Grady
Commissioner Robert E. "Bob" Jarrell
Joe Murray, Pre-Construction Manager
Seft, Patricia, Personnel/Construction Manager



- ◆ **Materials Management:** Protect stockpiles of soil and paving materials from wind and water erosion. Have a spill prevention and control plan for hazardous materials such as fuel, paints, and solvents.

- ◆ **Seeding and Sodding:** Establish vegetative cover on disturbed areas to reduce erosion and provide soil stabilization.



- ◆ **Dust Control:** Control wind-borne particles during construction to minimize onsite and offsite damages and hazards.

- ◆ **Sediment Perimeter Protection:** Install silt fencing, straw rolls or a gravel bag barrier to prevent sediment discharges.



ADDITIONAL RESOURCES:

- ◆ Baldwin County's Planning and Zoning Department Natural Resource Division:
<http://www.planning.co.baldwin.al.us>

- ◆ The Alabama Department of Environmental Management (ADEM) offers information at its website.
<http://www.adem.state.al.us>

- ◆ The Alabama Soil and Water Conservation Committee published the Alabama Handbook for Erosion Control, Sediment Control, and Stormwater Management on Construction Sites and Urban Areas. It is available at:

http://swcc.state.al.us/erosion_handbook.htm

- ◆ The Environmental Protection Agency's (EPA) website on the National Pollutant Discharge Elimination System (NPDES) provides information on erosion and sediment control during construction.

<http://cfpub.epa.gov/npdes>

- ◆ International Stormwater Best Management Practices (BMP) Database:
<http://www.bmptdatabase.org>



www.planning.co.baldwin.al.us

Main Office

312 Courthouse Square, Suite 18

Bay Minette, AL 36507

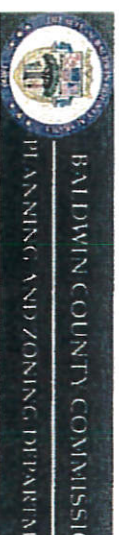
Phone (251) 580-1655

Fax (251) 580-1656

STORMWATER BEST MANAGEMENT PRACTICES (BMPs)



A SUPPLEMENT FOR THE EROSION CONTROL ORDINANCE



STORMWATER POLLUTION

If sedimentation or other pollutants from a construction site enters a watercourse, it can have negative effects on fish and aquatic life, their spawning grounds, and the overall turbidity, or clarity, of the watercourse. The Environmental Protection Agency (EPA) identifies the following as examples of pollutants: pesticides, petroleum products, construction chemicals, solvents, asphalt and acids.

BEST MANAGEMENT PRACTICES (BMPs)

In an effort to reduce or eliminate sediment and pollutant discharges into Baldwin County's watercourses, owners and operators in unincorporated and zoned areas of the county are required to submit an erosion control plan and implement best management practices (BMPs). BMPs are "structural or non-structural measures, practices, techniques or devices employed to avoid or minimize soil, sediment or pollutants carried in runoff to waters of the state."

PERMIT & REGULATORY REQUIREMENTS

The following permits and ordinances must be considered before construction activity commences:

- ♦ **Alabama Environmental Permit:** The Alabama Department of Environmental Management (ADEM) requires a notice of registration for all projects within the county which disturb 1 or more acres of land.

Information on this process and applications are available at: www.adem.state.al.us

- ♦ **Land Use Certificate:** The Baldwin County Planning and Zoning Department requires that a land use certificate be obtained prior to any construction commencing in zoned areas of the county. An erosion control plan showing the type and location of BMPs to be used must be submitted with the application. For sites less than 1 acre, the plan may be prepared by a qualified credentialed professional (QCP); a qualified credentialed inspector (QCI); a certified erosion control specialist; a licensed home builder or a licensed contractor. A qualified credentialed professional (QCP) must prepare plans for sites that are greater than 1 acre in size or those that fall under ADEM's authority.
- ♦ **Right-of-Way and Access Permits:** A permit is needed when working in the public right-of-way. Contact the Maintenance Engineer with the Baldwin County Highway Department at (251) 972-8533.
- ♦ **Building Permits:** Contact the Building Department to determine what building permits may be needed at (251) 580-2548.

INSPECTION PROGRAM

County staff monitors construction sites for proper erosion and sediment controls. They will ensure that BMPs are in place and providing adequate protection. If sediment and erosion are not being adequately controlled, the owner or operator may be subject to a stop work order or fines until the problem is corrected.

POLLUTION PREVENTION PRINCIPLES

The Alabama Handbook for Erosion and Sediment Control published by the Alabama Soil and Water Conservation Committee provides information to assist with the development of plans and the design of best management practices.

Multiple BMPs may need to be implemented to provide adequate erosion and sediment control protection.

The following are brief examples of BMPs that can be implemented on project sites:

- ♦ **Planning and Scheduling:** Minimize land disturbance by clearing only the area to be worked, rather than the entire site.

- ♦ **Slope Stabilization:** Preserve existing vegetation and stabilize slopes with hydraulic mulch or erosion control blankets.



- ♦ **Sediment Tracking:** Construct a stabilized construction entrance and conduct frequent street sweeping to keep sediment off of roadways.



WETLAND FACTS

There are an estimated 300,000 acres of wetlands in Baldwin County. 260,000 acres are freshwater and 40,000 have saltwater influence.

In the southeast, 96% of the commercial catch and over 50% of the recreational seafood harvest are fish and shellfish that depend of the estuarine and coastal wetland system.

Wetlands provide habitats for many waterfowl game species and for endangered and threatened species, such as Alabama red-bellied turtles, wood storks, and bald eagles.



1 acre of wetlands can store 1,000,000 to 1,500,000 gallons of floodwater.

Nearly half of the wetlands in the U.S. are located in the southeast.

May is American Wetland Month.

February is World Wetlands Month.



WETLAND RESOURCES

The internet is an excellent source of wetland information. Many agencies, such as the U.S. Army Corps of Engineers, the Environmental Protection Agency, the United States Geological Survey, local experts, colleges and universities, and a numerous non-profit organizations have countless resources on wetlands. You may also want to contact these agencies directly for specific questions.

Environmental Protection Agency (EPA)

www.epa.gov/owow/wetlands

EPA Wetlands Hotline
(800) 832-7828

U.S. Army Corps of Engineers
www.usace.army.mil/cw/cecono/reg/rw-bro.htm

U.S. Fish and Wildlife Service
www.fws.gov/rwi

U.S. Geological Survey National Wetlands Resource Center
www.nwrc.usgs.gov

AL Department of Environmental Management
www.adem.state.al.us/FieldOps/Coastal/Coastal.htm

Baldwin County Zoning Ordinance - Article X Section 10.4 -
www.planning.co.baldwin.al.us

Baldwin County Subdivision Regulations - Article 5 Section 2.2 -
www.planning.co.baldwin.al.us

Baldwin County Planning and Zoning Department

Natural Resource Division
312 Courthouse Square, Suite 18

Bay Minette, AL 36507
Phone (251) 580-1655

Fax (251) 580-1656

www.planning.co.baldwin.al.us

WETLANDS



Frequently Asked Questions and Wetland Resources



WHAT ARE WETLANDS?

The term wetland refers to lowlands covered with shallow and sometimes temporary intermittent waters. Wetlands are sometimes referred to as swamps, marshes, or bogs. Wetlands are transitional areas between terrestrial and aquatic ecosystems where the water table is typically at or near the surface.

Three criteria must be present for an area to be categorized as a wetland:



1) **Hydrology** - How the water enters and leaves the area. Indicators, such as visible inundation, water marks, and sediment deposits may be indicators of hydrology.

2) **Hydrophytic vegetation** - "Water-loving" plants that live in wetlands.

Hydric Soils - Often dark in color, these soils are formed when conditions of saturation, flooding, or ponding are present long enough to develop oxygen-depleted conditions.



Wetlands may be found in low-lying areas that have a high water table, or are located near rivers, lakes, streams or the beach. They can be areas of shallow open water with underwater plants; can look like a meadow; can occur on slopes or can surround a larger lake or stream.



Remember, an area does not have to be visibly wet to be considered a wetland.

WHY ARE WETLANDS IMPORTANT?

Wetlands were once considered wastelands and a hindrance to agricultural productivity and development. Today, wetlands are recognized as important and valuable ecosystems. They are home to many beautiful and rare species of plants and wildlife. The biodiversity of wetlands makes them comparable to tropical rain forests and coral reefs.



Wetlands perform many important functions:

- They act as natural "sponges" that absorb flood waters.
- Wetlands also act as a filter for our drinking water.
- Wetlands are home to many fish and wildlife species. Many of these species are threatened or endangered.
- Wetlands serve as a "stop over" for migratory birds.
- Wetlands provide food and offer breeding/spawning grounds for many fish and wildlife species.
- Wetlands also provide numerous recreational opportunities.



WHAT IF I HAVE WETLANDS ON MY PROPERTY?

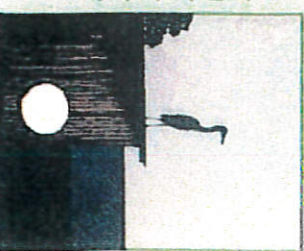
The presence of wetlands does not mean that a landowner cannot develop their property. If you suspect you have wetlands on your property contact the Baldwin County Planning and Zoning Department. Our staff can offer assistance by researching the property for potential wetlands and the presence of hydric soils using GIS technology.

If our staff determines that wetlands may be impacted by the proposed development we can provide a listing of local environmental consultants who can make a site visit and perform a wetland delineation if necessary. The delineation will show the boundary of the wetlands.

If the consultant determines that the property contains wetlands that may be impacted by the development, then the U.S. Army Corps of Engineers must be contacted. The Corps of Engineers is the regulating body for all wetland activities. You may contact the Mobile office of the U.S. Army Corps of Engineers for additional information.

U.S. Army Corps of Engineers
Regulatory/Permitting Department
P.O. Box 2268
Mobile, AL 36628
(251) 690-2658

Additional wetland requirements are laid out in the Zoning Ordinances of Baldwin County and the Baldwin County Subdivision Regulations. These documents require a 30' setback for any type of development.



Community Rating System (CRS) Program

Baldwin County began its participation in the NFIP, Community Rating System Program in 1994. The CRS Program was developed by the Federal Insurance Administration to provide incentives for the NFIP communities to implement more stringent floodplain standards that the minimum NFIP requirements. The CRS rewards these efforts with discounts on flood insurance premiums.

Baldwin County has been successful in achieving the Class 6 rating, reducing flood insurance premiums by 20% resulting in a savings to the citizens of the unincorporated areas of Baldwin County. A 10% discount is provided for non-SFHAs. Instead of paying higher premiums, the money saved hopefully stays in the community.

As of 2011 Baldwin County had 9,783 flood insurance policies in force which estimates to \$2,126,335,400 respectively. Since inception into the NFIP, there have been 6,985 losses paid totaling approximately \$204,410,128.

For more information about flood insurance, property owners and potential buyers should contact their local insurance agent or call the toll-free information line for the National Flood Insurance Program at 1-800-427-4661.

Baldwin County Commission Community Rating System (CRS) Program

Administered by the

Baldwin County Planning & Zoning Department

Foley Satellite Courthouse
201 East Section Street
Foley, Alabama 36535
Telephone: 251.972.8523
Fax: 251.972.8520

www.planning.co.baldwin.al.us

Direct Contact:

chart@baldwincounty.al.us

in conjunction with the

Baldwin County Highway Department

22070 Highway 59
Robertsdale AL 36567
Telephone: 251.937.0278

Emergency Management Agency

23100 McAuliffe Drive
Robertsdale AL 36567
Telephone: 251.972.6807

Building Inspection Department

201 East Section Street
Foley, Alabama 36535
Telephone: 251.972.6837

For Additional Information visit FEMA's
website at:

<http://www.fema.gov>

Baldwin County Commission



**Don't Delay
Buy Now!**

**FLOOD
INSURANCE
FOR
FINANCIAL
PROTECTION**

*For Real Estate Agents, Mortgage
Companies, Insurance Agencies,
Potential Buyers, Sellers, Property
Owners and the General Public*

April 2015

Baldwin County regulates construction and development in the floodplain to ensure that buildings will be protected from flood damage. Filling and similar projects are prohibited in certain areas. Houses substantially damaged by fire, flood, or any other cause must be elevated to or above the flood level when they are repaired.

Check for the Flood Hazard: Before you commit yourself to buying property, do the following:

- ▶ Ask the local building, zoning, or engineering department if the property is in a floodplain; if it has ever been flooded; what the flood depth, velocity, and warning time are; if it is subject to any other hazards, and what building and zoning regulations are in effect.
- ▶ Ask the real estate agent if the property is in a floodplain; if it has ever been flooded and if it is subject to any hazards, such as sewer backup or subsidence.
- ▶ Ask the seller and the neighbors if the property is in a floodplain, how long they have lived there, if the property has ever been flooded, and if it is subject to any other hazards.

The Baldwin County Inspection Department maintains FIRM maps. These maps are available for public inspection during normal business hours. They may also be viewed at your local library, also.

Upon written request, you may obtain a map of your property as it relates to a local flood hazard area. Contact the Baldwin County Planning & Zoning Department or visit their website at www.planning.co.baldwin.al.us.

Hurricane season officially begins on June 1. Property owners and renters are encouraged to purchase flood insurance policies as soon as possible to provide financial protection from floodwaters and storm surge.

The National Flood Insurance Program, administered by FEMA makes federally backed flood insurance available in communities that adopt and enforce floodplain management ordinances to reduce future flood losses. Flood damage, unlike wind damage, is not covered by a homeowner's policies. This coverage must be purchased separately and is available only in communities that participate in the NFIP.

Since Baldwin County is an NFIP community, federally backed flood insurance is available, with the exception of Coastal Barrier Resources Act (COBRA) areas along the Fort Morgan peninsula.

There is a 30-day waiting period before a new flood insurance policy becomes effective. There are two exceptions to the 30-day waiting period. First, there is no waiting period following the initial purchase of flood insurance when that purchase is in connection with making, increasing, extending or renewing a mortgage or construction loan; the policy will become effective upon loan closing. Secondly, there is no waiting period if the initial purchase occurs during the 13-month period following the revision or updating of a flood insurance rate map and in this case, the policy will go into effect at 12:01 a.m. the day after purchase.

All properties secured by a federally backed mortgage (FHA, VA, FNMA, etc.) must carry flood insurance. Within the COBRA area, the use of direct or indirect federal funding sources is prohibited. Private flood insurance may be available.

Flood Protection: A building can be protected from most flood hazards, sometimes at relatively low cost. New buildings and additions can be elevated above flood level. Existing buildings can be protected from shallow floodwaters by regarding, berms, floodwalls. There are other retrofit techniques that can protect a building from surface or subsurface water.

SAVE DOLLARS



BE SURE TO PURCHASE A
FLOOD INSURANCE POLICY

Many people think they don't need flood insurance because the federal disaster assistance will bail them out. HOWEVER, floods are not always declared a federal disaster area. Even when they are, aid is usually in the form of a loan, which must be paid back with interest.

Flood insurance on the other hand, pays for all covered losses, and unlike loans, that money doesn't have to be paid back.

You can cover your home's structure for up to \$250,000, and its contents for up to \$100,000. For businesses, structural coverage is available up to \$500,000 and up to \$500,000 for contents.

Programa Sistema de Clasificación de la comunidad (CRS)

Condado de Baldwin comenzó su participación en el NFIP, Programa Sistema de Clasificación de la Comunidad en 1994. El Programa de CRS fue desarrollado por la Administración Federal de Seguros Para ofrecer incentivos para las comunidades NFIP a aplicar las normas de inundación más estrictas que los requisitos mínimos del NFIP. El CRS premia a estos esfuerzos con descuentos en las Pólizas de seguro contra inundaciones.

Condado de Baldwin ha tenido éxito en lograr la clasificación de Clase 6, reduciendo las Pólizas de seguros de inundación en un 20%, resultando en un ahorro para los ciudadanos de las áreas no incorporadas del condado de Baldwin. Se ofrece un descuento del 10% para los no SFHA. En lugar de pagar Pólizas más altas, el dinero ahorrado con suerte se queda en la comunidad.

A partir del 2011 el condado de Baldwin tenía 9.783 pólizas de seguro contra inundaciones en vigor que estima a 212635400 EE.UU. dólares respectivamente. Desde su creación en el NFIP, se han producido 6.985 siniestros pagados por un total de aproximadamente \$ 204,410.128.

Para obtener más información sobre el seguro contra inundaciones, los propietarios y los compradores potenciales deben contactar a su agente de seguros local o llame a la línea de información gratuita para el Programa Nacional de Seguros contra Inundaciones al 1-800-427-4661.

Comisión del Condado de Baldwin Programa Sistema de Clasificación de la comunidad (CRS)

Administrado por la

Baldwin Departamento de Planificación y

Zonificación del Condado

Courthouse Foley Satellite

201 East Sección Calle

Foley, Alabama 36535

Teléfono: 251.972.8523

Fax: 251.972.8520

www.planning.co.baldwin.al.us

Contacto Directo:

dhart@baldwincountyal.us

en conjunción con el

Baldwin Condado Departamento de

Carreteras

22070 Highway 59

Robertsdale AL 36567

Teléfono: 251.937.0278

Agencia de Manejo de Emergencias

23100 McAuliffe unidad

Robertsdale AL 36567

Teléfono: 251.972.6807

Edificio del Departamento de Inspección

201 East Sección Calle

Foley, Alabama 36535

Teléfono: 251.972.6837

Para información adicional visite el sitio

web e www.fema.gov

<http://www.fema.gov>



Comisión del Condado de Baldwin

No Espere

Comprar Ahora!

**SEGURO DE
INUNDACIÓN
PARA**

**PROTECCIÓN
FINANCIERA**

*Para los agentes inmobiliarios,
compañías hipotecarias,
agencias de seguros,
potenciales compradores,
vendedores, propietarios y el
público en general*

Temporada de huracanes comienza oficialmente en junio 1. Los propietarios y se anima a los inquilinos para comprar pólizas de seguro tan pronto como sea posible para proporcionar una protección financiera de las inundaciones y las mareas de tempestad.

El Programa Nacional de Seguro de Inundación, administrado por FEMA fue respaldado por el gobierno federal de seguro contra inundaciones en comunidades que adoptan y cumplen con las ordenes de manejo de llanuras de inundación para reducir futuras pérdidas por inundaciones. Los daños por inundaciones, a diferencia de los daños del viento, no está cubierta por una Póliza políticas TM E S. Esta cobertura debe adquirirse por separado y está disponible sólo en las comunidades que participan en el NFIP.

Como el condado de Baldwin es una comunidad NFIP, seguro contra inundaciones respaldada por el gobierno federal está disponible, con la excepción Ley de Costas Barrera de Recursos (COBRA) áreas a lo largo de la península de Fort Morgan

Hay un período de espera de 30 días antes de una nueva póliza de seguro contra inundaciones entre en vigencia. Hay dos excepciones al período de espera de 30 días. En primer lugar, no hay período de espera tras la compra inicial de seguro contra inundaciones cuando esa compra es en relación con la fabricación, el aumento, la ampliación o renovación de un préstamo hipotecario o construcción; la política entrará en vigencia al momento del cierre del préstamo. En segundo lugar, no hay período de espera si se produce la compra inicial durante el período de 13 meses después de la revisión o actualización de un mapa tipo de seguro contra inundaciones y en este caso, la política ha entrado en vigor a las 12:01 am el día después de la compra.

Todas las propiedades garantizados por una hipoteca con respaldo federal (FHA, VA, FNMA, etc.) deben tener un seguro contra inundaciones. Dentro del área de COBRA, está prohibido el uso de fuentes directas o indirectas de financiamiento federal. Seguro contra inundaciones privado puede estar disponible.

Inundaciones Protección de: Un edificio puede ser protegido de la mayoría de los riesgos de inundación, a veces a un costo relativamente bajo. Nuevos edificios y adiciones pueden ser elevados por encima de los niveles de inundación. Los edificios existentes se puede proteger de las inundaciones de poca profundidad por respecto, bermas, o muros de contención. Hay otras técnicas de reforzamiento que pueden proteger un edificio de la superficie o el agua del subsuelo.

DÓLARES AHORRE

Asegurese de comprar una póliza de seguro INUNDACIONES

Muchas personas piensan que no necesitan seguro contra inundaciones porque la asistencia federal por desastre los puede ayudar. SIN EMBARGO, las inundaciones no siempre son declarados zona de desastre federal. Incluso cuando lo son, la ayuda es por lo general en forma de un préstamo, que debe ser pagado con intereses.

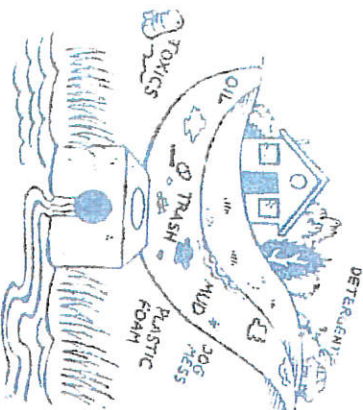
El seguro de inundación por el contrario, paga por todas las pérdidas cubiertas, a diferencia de los préstamos, este dinero no tiene que ser devuelto.

Puede cubrir su casa estructura para un máximo de \$ 250,000, y su contenido de hasta \$ 100,000. Para las empresas, la cobertura estructural está disponible hasta \$ 500,000 y hasta \$ 500,000 para el contenido.

What is the purpose of Stormwater Management?

The local governments in our communities have programs for the prevention and control of nonpoint pollution caused by stormwater runoff. Our area. The goals of stormwater management programs are to:

1. Slow down water, decreasing its ability to cause erosion and carry pollutants.
2. Prevent pollution of our rivers, streams, and bays by promoting proper use and disposal of toxic chemicals, oil, and litter.
3. Reduce the amount of runoff by encouraging water to soak into the ground.



What is the Mobile-Baldwin Stormwater Consortium?

The Mobile-Baldwin Stormwater Consortium was formed to coordinate, on a regional basis, the development of a stormwater management program. This program meets the requirements of the National Pollution Discharge Elimination System (NPDES) permit issued to the Consortium by the Alabama Department of Environmental Management.

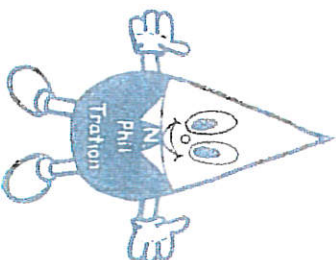
Local governments and agencies participating in the Mobile-Baldwin Stormwater Consortium include:

Mobile	Chickasaw
Creola	Daphne
Saraland	Fairhope
Satsuma	Mobile County
Prichard	Baldwin County

Alabama Dept. of Environmental Management
Alabama Department of Transportation
South Alabama Regional Planning Commission

For more information and/or to report violations contact:
your building department, public works department, or city/county engineer.

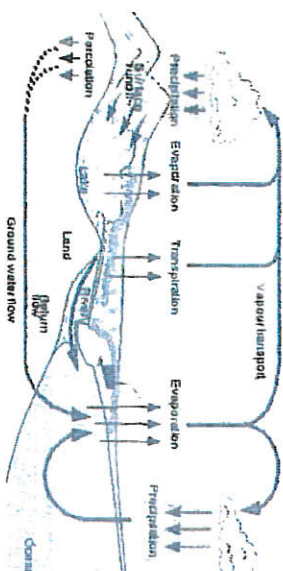
Alabama Dept. of Environmental Management,
Mobile Field Office, 450-3400
Baldwin County Commission, 937-0264
City of Chickasaw, 452-6463
City of Creola, 675-8142
City of Daphne, 626-9000
City of Fairhope, 928-2136
City of Mobile, 434-7177
City of Prichard, 457-3381
City of Saraland, 675-5103
City of Satsuma, 675-1440
Mobile County Commission, 690-8620
South Alabama Regional Planning Commission,
433-6541



Mobile-Baldwin Stormwater Consortium

What is Stormwater Pollution?

Rain falling on an area results in both benefits and problems. The benefits are water, vegetation and area cleansing. The problem that when rain flows over streets and other surfaces, it picks up pollutants and carries them into the stormwater conveyance ("storm drain" system). The storm drain is designed to prevent flooding by transporting water away from urban areas. Unfortunately, this water, and all the contaminants it contains eventually flows to oceans, streams, lakes, and the ocean where we swim and fish. Once there, polluted runoff can harm wildlife and their habitats. In some cases, it can even cause beach closures or make fish and shellfish unsafe to eat. Since these pollutants are washed from a wide area and cannot be traced to a single source, they are called nonpoint source pollutants.



Some Causes for the Problem!

Nonpoint source pollution comes from everyday activities, such as driving to work, cleaning with household chemicals, and applying fertilizer and pesticides to lawns and fields. These chemicals and fertilizers may be carried into our water bodies when it rains. Contaminated runoff may also filter through the soil and pollute the groundwater. Water entering storm drains is not treated in a sewage treatment plant.

What are the problems?

Sediments - Unprotected development sites, some agricultural practices, and natural erosion produce large volumes of sediment. These soil particles along with other debris wash into our streams and bays making the water cloudy and turbid. Sediment in the water prevents sunlight from reaching aquatic plants preventing them from producing the necessary oxygen levels for fish to survive. Sediment may also fill streams and ditches causing increased flooding in and along the drainage ways.

Nutrients - Phosphorus and Nitrogen from fertilizers and septic tanks often attach to soil particles and accelerate the growth of alga. Rapid and excessive growth of alga and aquatic plants can contribute to oxygen depletion in area waters. It may also interfere with recreational activities including swimming, boating and fishing.

Microorganisms - Bacteria, viruses and other disease causing organisms from animal and human waste may enter water bodies making them unsafe for fishing and swimming. It is possible for these organisms to be carried into our public water supply causing hepatitis, cholera and dysentery.

Toxic Chemicals - Motor oil and gasoline from parking lots, lead from gasoline and exhaust, zinc from tires, and pesticides in stormwater runoff may kill aquatic organisms or impair their health, growth or ability to reproduce.

Litter - Litter is not only unsightly, but may kill animals that live in our bays and streams that mistake plastic bags and cigarette butts for food.



How You Can Help! *Practices that will help prevent stormwater pollution*

Around the House

Many products used around the house contain petroleum based chemicals and/or other non-biodegradable ingredients. Pouring chemicals down the drain, flushing them down the toilet, and dumping them on the ground can be dangerous to our surface and ground water. Cans and containers with residual chemicals could potentially leach toxins into the air, soil or groundwater, eventually making its way into the food chain.

- ⇒ Landscape with native and drought resistant plants, thus reducing the need for water, fertilizer and pesticide use.
- ⇒ Compost leaves and grass clippings to prevent the clogging of storm drains and ditches.
- ⇒ Conserve water. By saving water you can help minimize stormwater overflows at your wastewater treatment plant.

Under the Hood

Proper maintenance of your vehicle can protect your own safety as well as plants and animals that live in our area waters.

- ⇒ Properly maintain your vehicle to protect your safety as well as plants and animals that live in our area waters.
- ⇒ Recycle oil. Take used oil to an oil recycling center, or a service center. Never pour your used oil down a storm drain or on the ground.
- ⇒ Maintain your vehicle. Correct fuel and oil leaks as soon as they are noticed.
- ⇒ Wash cars on grass or sandy areas. This waters the lawn and allows the water to infiltrate into the ground and reduces runoff.

At the Tank

Septic systems, if properly maintained, are efficient waste treatment systems. However, when a septic system is not maintained, it loses the ability to remove pollutants and disease-carrying microorganisms from wastewater. This untreated wastewater may pollute the water we utilize for drinking water and household needs.

- ⇒ Maintain your septic tank. When a septic tank not maintained it loses the ability to remove pollutants and disease-carrying microorganisms from wastewater. This untreated wastewater may pollute the water we utilize for domestic supplies.
- ⇒ Have the septic tank pumped ever three to five years.
- ⇒ Don't dispose of grease, cooking oil, or car oil down the drain
- ⇒ Keep heavy equipment off field lines
- ⇒ Don't install a garbage disposal.
- ⇒ Don't place plants with large root systems near field lines.

Look for and report Violations!

It is currently against the law to impair the water quality of a creek, stream, or bay through the introduction of soil, chemicals, or litter. It is also against the law to connect a storm drain to a sewer line or a sewer line to a storm drain. If you have knowledge of this type of violation, call the Alabama Department of Environmental Management or your local government officials.



BALDWIN COUNTY COMMISSION

PLANNING AND ZONING DEPARTMENT

Main Office (Mailing)

PO Box 220
Silverhill, AL 36576
Phone: (251) 580-1655
Fax: (251) 580-1656

Main Office (Physical)

22070 Highway 59
Robertsdale, AL 36567
Phone: (251) 580-1655
Fax: (251) 580-1656

Foley Satellite Office

201 East Section Street
Foley, AL 36535
Phone: (251) 972-8523
Fax: (251) 972-8520

BEFORE YOU BUILD, BUY OR SUBDIVIDE

Property owners and potential buyers should conduct the proper due diligence before building on, buying or subdividing land. Due diligence is the owner's responsibility and failure to perform such thorough research could result in a significant self-imposed hardship. The following notice contains information to consider and organizations to contact during the research process are listed on the back. For more detailed information, please visit the Planning & Zoning Department's website at: www.planning.co.baldwin.al.us.

- **Zoning** – Contact the Planning & Zoning Department to verify the property's zoning designation and permissible uses. You shouldn't buy property in a commercial zoning district if you are planning to build a single family residence. Also, each zoning designation has its own area and dimensional ordinances such as setbacks, density and lot widths that guide property development.
- **Wetlands** – The Planning & Zoning Department can assist in determining the presence of potential wetlands, which could restrict the desired development of the property concerning issues such as density and setbacks. The U.S. Army Corps of Engineers holds jurisdiction over wetlands and water bodies, and could require additional permits before construction can begin.
- **Subdividing** – Contact the Subdivision Division of the Highway Department to make sure the property has been legally subdivided—even if the division has been recorded at the Baldwin County Probate Judge's Office, it may not be a legal subdivision of land. Also, the parameters of each zoning designation such as lot width and density, will determine how you will be able to divide the property.
- **Covenants & Restrictions** – Contact the Recording Division of the Probate Judge's Office to verify whether there are deed restrictions or covenants that may limit the property's specific uses.
- **Flooding** – Visit the property after a weather event such as a thunderstorm, to check for flooding. In certain flood elevations, the Baldwin County Building Inspection Department requires documentation such as Elevation Certificates or engineer-stamped plans, before issuing a building permit.
- **Paved or Dirt Access** – There can be an extreme difference in living on a dirt road than a paved road. Find out if the road is publicly or privately maintained, it could lead to a financial burden in maintaining the road and your vehicle.
- **Property Lines** – You may wish to have a survey performed to verify property lines, which could determine the ownership and responsibility of items such as existing fences or trees.
- **Rights-of-Way and Easements** – Be sure to check for ingress and egress easements, utility easements and public and privately maintained rights-of-way. The Public Land Officer's primary responsibilities include researching and verifying public right-of-way and easement information.
- **Utilities** – Contact local utility companies to verify the availability of utility service. If sewer is not available, then contact the Baldwin County Health/Environmental Department for requirements related to subdividing property.

THIS NOTICE IS NOT LEGAL ADVICE, BUT IS FOR INFORMATIONAL PURPOSES ONLY. IT IS NOT EXHAUSTIVE AND EACH CASE MAY REQUIRE FURTHER RESEARCH.

**Baldwin County's
Official Website:**
www.baldwincountyal.gov

**Baldwin County Land
Management Division**
(251) 937-0248
(251) 580-1873 Fax

**Baldwin County Building
Inspection Department**
201 East Section Street
Foley, AL 36535
(251) 972-6837
(251) 972-6820 Fax

1100 Fairhope Avenue
Fairhope, AL 36532
(251) 990-4641
(251) 990-4642 Fax

**Baldwin County Highway
Department**
(Physical) 22070 Highway 59
Robertsdale, AL 36567
(Mailing) P.O. Box 220
Silverhill, AL 36576
(251) 937-0371
(251) 937-0201 Fax

**Baldwin County Highway -
Permits & Subdivisions**
(Physical) 22070 Highway 59
Robertsdale, AL 36567
(Mailing) P.O. Box 220
Silverhill, AL 36576
(251) 937-0278
(251) 937-0227 Fax

**Baldwin County Probate
Judge's Office**
220 Courthouse Square
Bay Minette, AL 36507
(251) 937-0260
(251) 937-0252 Fax

1100 Fairhope Avenue
Fairhope, AL 36532
(251) 928-3002 ext. 4645
(251) 580-2594 Fax

201 East Section Street
Foley, AL 36535
(251) 943-5061 ext. 2863
(251) 580-2588 Fax

**Baldwin County Revenue
Commissioner's Office**
P. O. Box 1389
Bay Minette, AL 36507
Eastern Shore: (251) 928-0860
South Baldwin: (251) 943-5611
North Baldwin: (251) 937-0245
Foley: (251) 943-5061
Fairhope: (251) 928-3002

**Baldwin County
Health/Environmental Office**
(Physical) 22251 Palmer Street
(Mailing) P.O. Box 369
Robertsdale, AL 36567
(251) 947-3618
(251) 947-3557 Fax

U.S. Army Corps of Engineers
Mobile District
109 Saint Joseph Street
Mobile, AL 36628-0001
(251) 690-2511
(251) 690-2525 Fax
www.usace.army.mil

U.S. Geological Survey
USGS National Center
12201 Sunrise Valley Drive
Reston, VA 20192
(888) 275-8747
www.usgs.gov

**United States Environmental
Protection Agency**
Region 4
Sam Nunn Atlanta Federal Center
61 Forsyth Street, SW
Atlanta, GA 30303-8960
(404) 562-9900
(800) 241-1754
(404) 562-8174 Fax

**U.S. Department of
Transportation
Federal Highway
Administration**
400 Seventh Street, SW
Washington, DC 20590
www.fhwa.dot.gov

**Alabama Department of
Transportation (ALDOT)**
1409 Coliseum Boulevard
P.O. Box 303050
Montgomery, AL 36130-3050
www.dot.state.al.us

ALDOT Ninth Division
1701 North Beltline Hwy
Mobile, AL 36618
(251) 470-8200
(251) 473-3624 Fax

**Alabama Department of
Environmental Management
(ADEM)**
1400 Coliseum Blvd.
Montgomery, AL 36110
P.O. Box 301463
Montgomery, AL 36130-1463
(334) 271-7700
www.adem.state.al.us

**U. S. Department of Agriculture
Natural Resources
Conservation Service (NRCS)**
P.O. Box 311
3381 Skyway Drive
Auburn, AL 36830
(334) 887-4500
(334) 887-4551 Fax
www.al.nrcs.usda.gov

**Alabama Department of
Conservation and Natural
Resources (ADCNR)**
64 N. Union Street
Montgomery, AL 36130
www.outdooralabama.com

ADCNR State Lands Division
30945 5 Rivers Boulevard
Spanish Fort, AL 36527
(251) 621-1216
(251) 621-1331 Fax

**Baldwin County
Association of Realtors**
908 Plantation Blvd.
Fairhope, AL 36532
(251) 928-1708
(251) 928-1046 Fax
www.baldwincountyrealtors.com



BALDWIN COUNTY PLANNING AND ZONING DEPARTMENT

Protect yourself from a flood disaster

NATURAL AND BENEFICIAL FUNCTIONS

The wetlands within Baldwin County are indispensable and fragile natural resources with significant development constraints due to flooding, erosion and soil limitations. In their natural state, wetlands serve man and nature. They provide habitat areas for fish, wildlife and vegetation; water quality maintenance and pollution control; flood control; erosion control; natural resource education; and many other causes. Damaging or destroying wetlands threatens public safety and the general welfare. It is therefore necessary for Baldwin County to ensure maximum protection for wetlands by discouraging development activities that may adversely affect wetlands.

Baldwin County regulates Stormwater Management policies through the Subdivision Regulations for all new developments. Developments which produce an increase in the amount of stormwater runoff are required to construct stormwater management facilities.

Baldwin County has provisions which impose requirements on persons engaged in land disturbing activities which require planning and implementation of effective sedimentation controls for individual lots and subdivision development sites.

For more information regarding Erosion, Sedimentation or Stormwater Management requirements for new developments, contact the Baldwin County Planning & Zoning Department at 251.580.1655 or the Subdivision Permitting Department at 251.937.0278.

FLOOD HAZARD

Baldwin County is virtually surrounded by water, with the exception of several miles in the extreme northeast bordering Escambia County with numerous bays, rivers, streams and arbitraries within the interior portions of the County.

Baldwin County faces its greatest threat of flooding from hurricanes and tropical storms, but coastal flooding can occur year-round. These storms can destroy many properties and cause damage to countless others. Even though property may have escaped flooding or damage from previous storms, it may not escape flooding or damage from the next storm.

To determine if your property is located in a Special Flood Hazard Area (SFHA) contact the Baldwin County Building Inspection Department at (251) 972-6837.

FLOOD PROTECTION MEASURES

Every year, flooding causes more property damage in the

United States than any other type of natural disaster. While recent construction practices and regulations have made new homes less prone to flooding, many existing structures remain susceptible. Throughout the country there is a growing interest from property owners to develop practical and cost-effective methods for reducing or eliminating exposure to flooding.

There are many ways you can help protect your property and your possessions from flood damage. Property protection measures publications and assistance is available to you by contacting the Baldwin County Building Inspection Department at 251.972.6837 or by visiting your local libraries. You may also visit the FEMA website at www.fema.gov/

FLOOD SAFETY

Flood safety protection measures that are to be taken in the event of a hurricane or any other major storm event include having your electricity and gas turned off by the Power Company; not driving or walking through flowing water or any flooded area; and staying clear of any unstable stream banks. Be sure and stay tuned to your local television or radio station for weather updates. If you are required to evacuate, try to move to the house of a friend or family member not affected by the impending flood hazard. If you live in a mobile home, plan to evacuate at the first notice. Everyone should rehearse your evacuation plans with all household members and plan to leave early to avoid traffic delays. For additional information regarding Baldwin County's flood warning program, contact Baldwin County Emergency Management Agency at 251.972.6807.

FLOOD INSURANCE

Most mortgage lenders require flood insurance based on the location and elevation of the property. Flood damage, unlike wind damage, is not covered by homeowner's policies and must be purchased separately. Since Baldwin County is an NFIP community, federally backed flood insurance is available. There is typically a 30-day waiting period before a new flood insurance policy becomes effective. You are eligible for flood insurance, regardless of whether your property has never flooded, or has flooded several times in the past. All properties secured by a federally backed mortgage must carry flood insurance.

For more information about flood insurance, property owners should contact their insurance agent or call the NFIP's toll-free information line at 1-800-427-4661.

For Local Weather Information

Area Television Stations

Channel 3 (ABC) WEAR-TV
Channel 5 (CBS) WKRG-TV
Channel 10 (NBC) WALA-TV
Channel 15 (FOX) WPXI-TV
Channel 44 WJTC-TV

Area Radio Stations

WABB AM/FM (1480)
WABF AM (1220)
WAVH FM (106.5)
WBCA AM (1110)
WBHY AM (840)
WBHY FM (88.5)
WBLX FM (92.5)
WBUB FM (104.1)
WDLT FM (98.3)
WDLT AM (600)
WGOK AM (900)
WHEP AM (1310)
WHLQ FM (91.3)
WHLQ FM (100.7)
WKSJ FM (94.9)
WMXC FM (99.9)
WNJB AM (1360)
WNTM AM (710)
WNSP FM (105.5)
WPCS FM (89.3)
WQUA FM (102.1)
WRKH FM (96.1)
WTKK FM (TK-101)
WUWF FM (91)
WXXBM FM (102.5)
WXXVY AM (100)
WZEWF FM (92.1)

Survive Severe Storms!

A Weather Radio Can Be a Good Investment

Protect yourself and your family from disasters! During or after an emergency, it might be several days before vital services are restored. NOAA emergency alert weather radios activate to provide you with immediate information about life threatening events, giving you extra time to prepare and evacuate if necessary.



Important Contact Information

Baldwin County Building Inspection

(251) 972-6837

Baldwin County Planning and Zoning

www.planning.co.baldwin.al.us

(251) 580-1655

Baldwin County Highway Department

(251) 937-0371

Baldwin County Highway - Permitting (Subdivision) Division

(251) 937-0278

Baldwin County Emergency Management

(251) 972-6807

(251) 937-0317

(251) 990-4605

Community Rating System Program

(251) 580-1655 ext. 7230

Baldwin County Planning & Zoning Department

www.planning.co.baldwin.al.us

Main Office - Mailing
22251 Palmer Street
Robertsdale, AL 36567

Main Office - Physical
22070 Highway 59
Robertsdale, AL 36567

Foley Satellite Office
201 East Section St.
Foley, AL 36535
(251) 972-8523

If you would like to be notified of other information on zoning, and development, please sign up to receive our e-mail distribution list for the Planning Department and the Highway Department's Permit Division. Subscribers will receive via e-mail our quarterly newsletter, agendas for upcoming meetings, action reports and other news. The service is free and users can subscribe or unsubscribe at any time. To subscribe, send your name, contact information and email address to: planninglist@co.baldwin.al.us

In addition to the email postings from the Planning List, an RSS feed of the list is also available. The RSS Feed is open to anyone, subscriber or non-subscriber, by visiting the link on the Planning website. The feed will show an archived list of all postings from the Planning List.



Baldwin County Commission Planning and Zoning Department Flood Hazard Protection Newsletter

May 2019



Parts of southern Baldwin County were drenched with 22 to 26 inches of rain on April 29-30, 2014, causing dangerous flash flooding, river flooding and roads to washout.

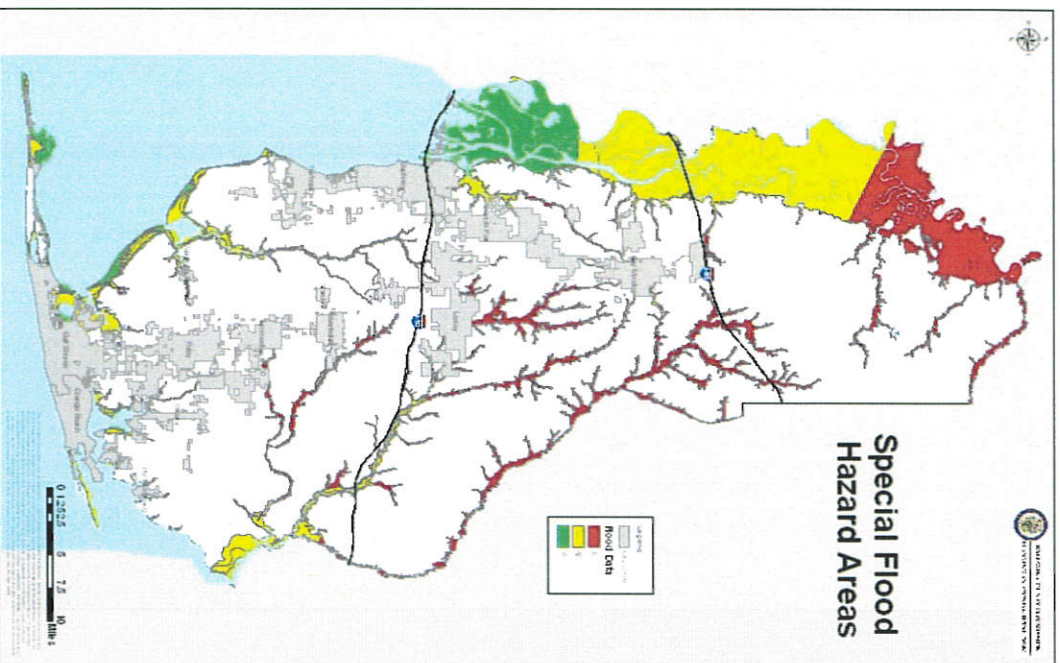
(additional pictures on page 16-19)

Baldwin County Special Flood Hazard Areas Map

Baldwin County is comprised of approximately 1,596.3 square miles (1,067,231 acres) of which 188,628 acres is in the A, AE and VE flood zones.

The Baldwin County Inspection Department maintains FIRM maps. These maps are available for public inspection during normal business hours. They may also be viewed at your local library. Elevation Certificates for the past few years may also be obtained at the Baldwin County Inspection Department. Staff is available to assist you with the following information:

- * Whether a property is located within an NFIP or County mapped flood zone.
- * FEMA flood zone and regulatory base flood elevation.
- * FEMA Elevation Certificate, if available. The Elevation Certificate is an essential tool used to accurately rate flood insurance policies.
- * Information on mandatory flood insurance purchase requirements.
- * Regulatory provisions that may apply to your property.
- * If available, whether or not the property has ever suffered any flood damage. Upon written request, you may obtain a map of your property as it relates to a local flood hazard area. Contact the Baldwin County Planning & Zoning Department or visit their website at www.planning.co.baldwin.al.us.



Photos courtesy of AL.com and Alabama Media Group



Photos courtesy of AL.com and Alabama Media Group

Baldwin County is an active participant in the National Flood Insurance Program (NFIP), which provides federally backed flood insurance in communities that enact and enforce floodplain regulations. Since its inception in 1968, the program has been successful in helping flood victims get back on their feet. This is important since property owners who hold a federally backed mortgage must purchase flood insurance if the property is located within a Special Flood Hazard Area (SFHA).

Baldwin County began its participation in the NFIP Community Rating System (CRS) Program in 1994. The CRS Program was developed by the Federal Insurance Administration to provide incentives for NFIP communities to implement more stringent floodplain standards than the minimum NFIP requirements. The CRS rewards these efforts with discounts on flood insurance premiums. The CRS uses a rating system to determine the amount of discount - the better the rating, the more the discount will be. Baldwin County currently holds a Class 7 CRS rating, which equates to a 15% discount on new or renewing flood insurance policies for all SFHA properties.

Since flooding is the most common natural disaster, it is important that you obtain the maximum protection. You can purchase flood insurance irrespective of where you reside in high, moderate, or low risk areas, and there is no exclusion as to what type of ownership you represent (i.e. homeowner, renter or business owner).

To help protect property and reduce potential losses due to flooding, please refer to this fact sheet in the event of an impending hurricane, tropical storm or notification of projected heavy rainfall. During extended periods of heavy rainfall, low-lying areas within the County are at risk for flooding. Visit the FEMA website (www.fema.gov) for more information on the National Flood Insurance Program (NFIP).



Baldwin County's Storm Ready Flood Warning System

Baldwin County has been designated as a StormReady Community by the National Weather Service. StormReady communities are better prepared to save lives from the onslaught of severe weather through advanced planning, education and awareness. No community is storm proof, but StormReady can help communities save lives.

Baldwin County's Emergency Management Agency uses several warning devices to warn residents and visitors of storms and potential rising water hazards.

A REVERSE 911 system was purchased in 2004 and allows Emergency Management to link its E911 telephone databases and existing GIS Mapping Systems to target a precise geographic area and quickly notify individuals in the event of a disaster or threat. Reverse 911 mes-

sages are prerecorded messages sent to home phones that are nonrestrictive and cell phones that are registered with the Emergency 911 Agency. The system has the capability to send messages via text and TTY/TDD calling for the hearing impaired.

Flood warnings are disseminated by the Emergency Alert System through local radio and television stations and by NOAA Weather Radio at 162.400 or 162.550 MHz depending on your location.

In the event of flood hazards, tune into local Radio and TV Stations for information. (See back page for complete listing of local station identification numbers)

The County provides real-time information regarding high water, road closures, and evacuation routes through

Changeable Message Signs. Warnings may also be issued to affected businesses and residences by mobile public address systems on emergency vehicles. When you hear these messages you should follow the instructions and tune to your radio and TV stations for more information.

For additional information regarding Baldwin County's flood warning program, contact Baldwin County Emergency Management Agency at 251.972.6807.

Flood Monitoring Stations Aid in Early Detection of Rising Waters

Flood monitoring stations are located on the Fish, Magnolia, Syx, Mobile and Perdido Rivers. These stations are monitored by the National Weather Service and Baldwin County Emergency Management Agency. This information is used to monitor stream flow and stream height for early detection of rising water. This monitoring allows emergency personnel to make better decisions about warning people in flood prone areas.

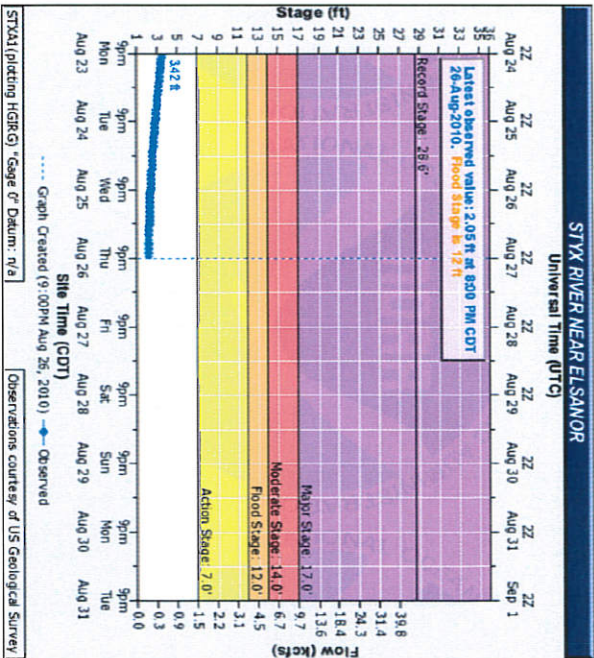
You can access forecasts online as well as weather discussions, radar information, and satellite photos through the National Weather Service flood forecast site which can be viewed at:

<http://www.srh.noaa.gov/>

<http://www.srh.noaa.gov/>

Additional USGS stream gauges are located on the Fish River near Silverhill, the Magnolia River at US Highway 98, Wolf Creek below Foley, and the Syx River near Loxley. Data from these sites can be found on the USGS website at:

<http://waterwatch.usgs.gov/>



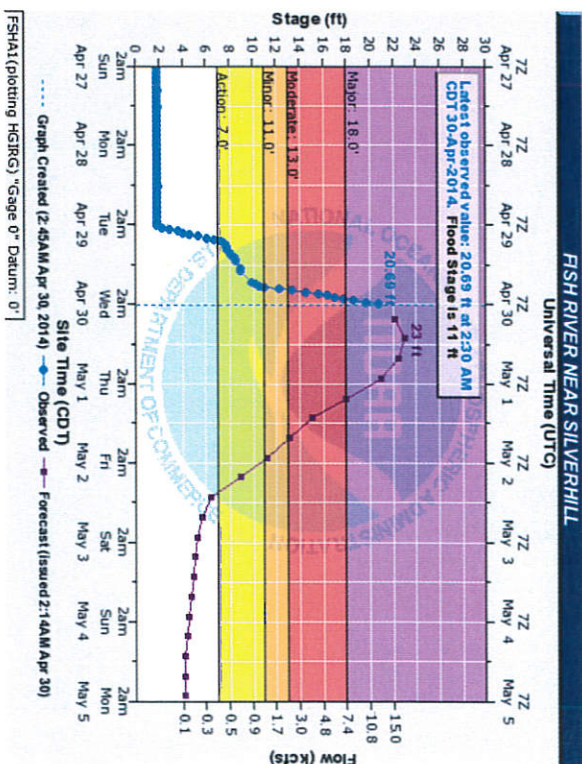
Flood Terms to Know!

FLOOD WATCH: Flash flooding is possible within the watch area.

FLASH FLOOD WARNING: Flash flooding is imminent or has been reported in the warning area and evacuation is advisable.

* A flash flood is caused by excessive rainfall in a short period of time, generally less than 6 hours.

* When a flash flood warning is issued you may have 30 minutes or less to act. Therefore, you should preplan the actions you will take when a flood warning is issued.



Fish River near Silverhill will rise to 23 feet... cresting ABOVE the highest historical crest of 22.78' in 1997



Photos courtesy of AL.com and Alabama Media Group



A car submerged in Elberta, Alabama April 30, 2014



Home on Magnolia River April 30, 2014



County Road 49 at the Magnolia River April 30, 2014

Photos courtesy of AL.com and Auburn Media Group

Baldwin County Flood Hazard Facts



Some of the more prominent water bodies internal to the county include: Bay Minette Creek, Styx River, Blackwater River, Fish River, Magnolia River, Weeks Bay, Bon Secour River, the Gulf Intracoastal Waterway, Oyster Bay, Wolf Bay, Soldier's Creek and Palmetto Creek. Approximately 22 percent of the land in Baldwin County is considered wetland.

Baldwin County has suffered from numerous major flood events brought on by intense or prolonged rainfall and resulting in loss of life and millions of dollars in property damage. Based on historical information, the county can expect an average of 2.5 flood events per year.

Most flooding occurs along the Fish River located in the southwestern portion of the county and Styx River in the central eastern portion of the county. Other rivers and creeks in the county include the Mobile River, Perdido River, Bay Minette Creek, Hollinger Creek and their tributaries. The cities of Gulf Shores and Orange Beach and the Fort Morgan Peninsula are at the greatest risk for coastal flooding.

Baldwin County is located in southwestern Alabama on the Gulf of Mexico. The county encompasses an area of approximately 1,596.35 square miles and is bordered to the northwest by Washington County, to the north by Clarke and Monroe Counties, to the east by Escambia County, Florida, to the south by the Gulf of Mexico, and to the west by Mobile County. The County seat is in the City of Bay Minette which is located in the north central part of the county. A majority of Baldwin County is entirely surrounded by water, except for a 17-mile stretch along the northeastern border.

- It is surrounded by Mobile Bay, the Tensaw River, and Mobile River to the west, Little River to the north, Perdido River and Perdido Bay to the east, and the Gulf of Mexico to the south.
- There are approximately 1,800 miles of streams and rivers in Baldwin County identified in the United States Census Bureau (USCB) TIGER files.

Hurricane & Tropical Depression Events that have affected Baldwin County since 2004

Hurricane Ivan -2004
Hurricane Katrina -2005
Hurricane Gustav-2008
Tropical Storm Ida-2009
Heavy Rains-March 26-27-2009
Historic Flooding-April 29-30, 2014

Flood Insurance Is For Your Financial Protection It's Never Too Early to Purchase A Flood Insurance Policy



Being prepared for a flood includes having flood insurance. With floods, there is usually some resulting loss or damage of property. Unfortunately, homeowners' insurance policies do not cover flood damage. However, flood insurance coverage is available under the NFIP for participating communities with the exception of the Coastal Barrier Resource Act (COBRA) areas along the Fort Morgan Peninsula. In these areas, private flood insurance may be available.

Many people think they don't need flood insurance because federal disaster assistance will bail them out. But floods are not always declared a federal disaster area. Even when they are, aid is usually in the form of a loan, which must be paid back with interest. Flood insurance on the other hand, pays for all covered losses, and unlike loans, that money doesn't have to be paid back. You can cover your home's structure for up to \$250,000, and its contents for up to \$100,000. For businesses, structural coverage is available up to \$500,000, and up to \$500,000 for contents.

As a result of participating in the Community Rating System Program (CRS), Baldwin County has successfully reduced flood insurance premiums by 20% resulting in a savings to the citizens of Baldwin County. A 10% discount is provided for non-SFHAs, instead of paying higher premiums, the money saved hopefully stays in the community.

Currently Baldwin County has 9,783 flood insurance policies in force which estimates to \$2,126,335,400 respectively. Since inception into the NFIP, there have been 6,983 losses paid totaling approximately \$204,410,128.

There are 6,080 policies in force in the SFHA, with an average premium (after 15% discount) of \$621 which is a savings of \$110 and a savings to the citizens of Baldwin County of \$666,617. There are 1929 policies in force in the Non-SFHA, with an average premium (after 5% discount) of \$334 which is a savings of \$33,948.

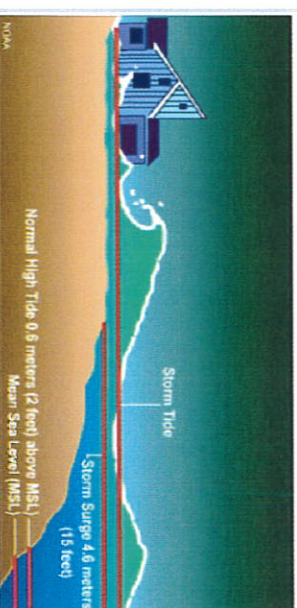
For more information about flood insurance, property owners and potential buyers should contact their local insurance agent or call the toll-free information line for the National Flood Insurance Program (NFIP) at 1-800-427-4661.



Storm Surge Can Cause Sweeping Damage

Wave and current action associated with the tide cause extensive damage. Water weighs approximately 1,700 pounds per cubic yard, extended pounding by frequent waves can demolish any structure not specifically designed to withstand such forces.

The current created by the tide combine with the action of the waves to severely erode beaches and coastal highways. Many buildings withstand hurricane force winds until their foundations, undermined by erosion, are weakened and fail.



Storm surge is a large dome of water, often 50 to 100 miles wide, that sweeps across the coastline where a hurricane makes landfall. The storm tide is the combination of the storm surge and the astronomical tide.

The level of surge in a particular area is also determined by the slope of the continental shelf. A shallow slope off the coast will allow a greater surge to inundate coastal communities. Communities with a steeper continental shelf will not see as much surge inundation although large breaking waves can still present major problems. Storm tides, waves, and currents in confined harbors severely damage ships, marinas, and pleasure boats.

In general, the more intense the storm, and the closer a community is to the right-front quadrant, the larger the area that must evacuate. The problem is always the uncertainty about how intense the storm will be when it finally makes landfall. Emergency managers and local officials balance the uncertainty with the human and economic risks to their community. This is why a rule of thumb for emergency managers is to plan for a storm one category higher than what is forecast. This is a reasonable precaution to help minimize the loss of life from hurricanes.



Top 10

1 Everyone Lives in a Flood Zone

You don't need to live near water to be flooded. Floods are caused by storms, melting snow, hurricanes and water backup due to inadequate or overloaded drainage systems, dam or levee failure etc.

2 Flood Damage Is Not Covered by Homeowner's Policies

You can protect your home, business, and belongings with flood insurance from the National Flood Insurance Program. You can insure your home with flood insurance for up to \$250,000 for the building and \$100,000 for your contents.

3 You Can Buy Flood Insurance No Matter If Your Flood Risk Is High, Medium or Low

It doesn't matter whether your flood risk is high, medium or low, you can buy flood insurance as long as your community participates in the National Flood Insurance Program. And, it is a good idea to buy for low or moderate risks—almost 25 percent of all flood insurance claims come from low and moderate risk areas.

4 Flood Insurance Is Easy To Get

The average flood insurance policy costs a little more than \$300 a year for about \$100,000 of coverage. In comparison, a disaster home loan can cost you more than \$300 a month for \$50,000 over 20 years.

5 Contents Coverage Is Separate, So Renters Can Insure Their Belongings Too

Up to \$100,000 contents coverage is available for homeowners and renters. Whether you rent or own your home or business, make sure to ask your insurance agent about contents coverage since it is not automatically included with building coverage policies.

Facts Everyone Should Know About The National Flood Insurance Program (NFIP)

Flood Insurance Is Affordable

The average flood insurance policy costs a little more than \$300 a year for about \$100,000 of coverage. In comparison, a disaster home loan can cost you more than \$300 a month for \$50,000 over 20 years.

There Is a Low-Cost Policy for Homes in Low to Moderate Risk Areas

The Preferred Risk Policy is available for just over \$100 a year. You can buy up to \$250,000 of coverage for your home and \$60,000 of coverage for your contents.

There is Usually a 30-Day Waiting Period Before Coverage Is Effective

Plan ahead so you're not caught without flood insurance when a flood threatens your home or business.

Federal Disaster Assistance Is Not the Answer

Federal disaster assistance is only available if the President of the United States declares a disaster. More than 90 percent of all disasters in the United States are not presidentially declared. Flood insurance pays even if a disaster is not declared.

Up To \$1 Million of Flood Insurance Coverage Is Available for Non-Residential Buildings and The Contents

Up to \$500,000 of coverage is available for non-residential buildings and up to \$500,000 of coverage is available for the contents of non-residential buildings.

For more information about flood insurance, property owners should contact their local insurance agent or call the toll-free information line for the National Flood Insurance Program (NFIP) at: 1-800-427-4661.

The Four Stages of Flood Safety

Flood safety protection measures should be taken in four stages: Preparatory Flood Warning, Flood Warning, During the Flood and After the Flood.

Preparatory Flood Warning

- Have a stock of food that requires no cooking.
- Have a first aid kit available.
- Have your vehicle fueled.
- Consider purchasing flood insurance for your home and belongings. Homeowner's insurance does *NOT* cover flooding.
- Tune in to a radio, television or NOAA Weather Radio for flood warnings.
- Obey warnings from officials - evacuate when a notice is issued.
- Know your evacuation zone and route to a place of safety.
- Know what supplies to take with you.
- Be cautious and avoid flood-prone areas when leaving.
- Steps should be taken to reduce property losses:
 - Move outdoor furniture and carry downstairs furniture to upper floors or higher locations.
 - Sandbags can help slow down floodwaters to keep them from reaching your possessions.
 - Know what your current insurance policy does and does not cover. By retrofitting, you can minimize loss prior to floods by building floodwalls, elevating a structure, etc.

Flood Warning

- Store drinking water in sterile, covered containers.
- Move valuable objects higher. Place them on shelves, tables and countertops.
- Shut off electricity, gas and water to your home prior to leaving.
- Leave early enough to avoid traffic congestion.

During the Flood

- Stay on higher ground.
- Do not drive on a flooded road - more people drown in their cars than anywhere else. Do not drive around road barriers, the road or bridge may be washed out.
- If your vehicle stalls, abandon it immediately and seek higher ground.
- Do not attempt to wade across a flowing stream that is above your knees. Drowning is the number one cause of flood deaths, mostly during flash floods. Currents can be deceptive; if you walk in standing water, use a pole or stick to ensure that the ground is still there.
- Stay away from power lines and electrical wires. Electrical current can travel through water.
- Look out for Animals. Consider shelters where animals are allowed.

After the Flood

- Do not eat food that has come into contact with floodwater.
- Drink only bottled water or previously stored water.
- Look before you step. The grounds and floors may be covered with debris including broken bottles and nails. Floors and stairs that have been covered with mud can be slippery.
- Stay away from disaster areas. You may hamper rescue or recovery operations.
- Do not handle live electrical equipment.
- Do not allow children to play in standing water. It may be contaminated with chemicals or sewage.
- Use a flashlight to inspect for damage. Don't smoke or use candles, lanterns or open flames unless you know the gas has been turned off and the area has been ventilated.
- Report downed power lines to the local power company, Emergency Management Agency or local law enforcement authorities.
- Keep tuned in to local radio and television stations for instructions on how to obtain medical care and emergency assistance, such as water, food, clothing, shelter and further weather reports and conditions.



The Natural & Beneficial Functions of Wetlands and Storm water Management

The wetlands within Baldwin County are indispensable and fragile natural resources with significant development constraints due to flooding, erosion and soil limitations. When portions of floodplains are preserved or restored to their natural state, they provide many benefits to both human and natural systems. Open space resource areas adjacent to floodplain areas increase aesthetics and recreational opportunities; reduce the number and severity of floods; help handle storm water run-off, and minimize non-point water pollution.

Protecting freshwater and coastal wetlands is a critical goal of Baldwin County. Not only do wetlands add significant fish and wildlife habitat to the shore land area, but wetlands play an essential role in preserving water quality by functioning as a buffer for associated water bodies. According to the Southeast Watershed Forum, one acre of fresh water wetlands are

valued at \$650 each year for water quality, \$594 for flood retention, \$539 for recreational fishing and \$1,832 for bird watching. Baldwin County has a wetland protection overlay district in all zoned areas that covers approximately 290,831 acres. The purpose of the wetland protection overlay district is to promote wetland protection, while taking into account varying ecological, economic development, recreational and aesthetic values.



Wetlands also mitigate flood damage by serving as flood storage areas, minimizing erosion damage to shorelines by slowing the velocity of runoff and replenishing groundwater supplies. American Rivers, a non-profit conservation organization, found that one wetland acre saturated to a depth of one foot holds 333,000 gallons of water, which can flood thirteen average homes thigh-deep. This wetland function protects downstream property owners from flood damage. The velocity of floodwaters decreases when met with resistance from the wetland vegetation, this decrease reduces the water's erosive potential and results in smaller, less severe flooding events.

Wetlands within Baldwin County are indispensable and fragile natural resources with significant development constraints due to flooding, erosion and soil limitations. In their natural state, wetlands serve man and nature. They provide habitat areas for fish, wildlife and vegetation; water quality maintenance and pollution control; flood control; erosion control; natural resource education; and many other causes. Damaging or destroying wetlands threatens public safety and the general welfare. It is therefore necessary for Baldwin County to ensure maximum protection for wetlands by discouraging development activities that may adversely affect wetlands.



Baldwin County regulates Storm water Management policies through the Subdivision Regulations for all new developments. Developments that increase storm water runoff are required to construct storm water management facilities. Baldwin County has provisions that impose requirements for land disturbing activities that require planning and implementation of effective sedimentation controls for individual lots and subdivision development sites. For more information on Erosion, Sedimentation or Storm water Management requirements for new developments, contact the Baldwin County Planning & Zoning Department at 251.580.1655 or the Subdivision Permitting Department at 251.937.0278. Both the Baldwin County Subdivision Regulations and Baldwin County Zoning Ordinances are available online at www.planningco.baldwin.al.us.

Help Reduce Your Risk Of Damage

filling a wetland, or discarding debris in a watercourse can cause a problem to themselves and others.

There are publications and assistance in property protection available at the offices of the Baldwin County Inspection Departments and local libraries. To learn more about property protection measures, visit FEMA's website at <http://www.fema.gov/rebuild/mitigation.shtml> and Baldwin County's website under www.planning.co.baldwin.al.us.

FEMA provides grants, in certain situations, for property protection measures that reduce disaster losses and protect life and property from future disaster damages. Projects must provide a long-term solution to a problem. These grants are made to the state or local government rather than to the homeowner directly and often have a cost-share requirement. To learn more about these programs, contact the Baldwin County Inspection Department or visit FEMA's website at <http://www.fema.gov/government/grant/index.shtml>.



A new 3-foot concrete slab foundation was poured before elevating this house on cinder block piers to mitigate against flooding.

Flood Safety Measures Every Family Needs to Know

To reduce your risk of injury during a flood:

- Do not attempt to cross a fast flowing stream where water is above your ankles.
- Keep children away from rivers, ditches, culverts and storm drains.
- Do not travel on flooded roads or through dip sections.
- Never drive past a "Road Closed" barrier.
- If your home will be affected by flood waters, turn off all electric circuits at the fuse panel or disconnect switch
- Evacuate the flood hazard area in times of impending flood or when advised to do so by the Sheriff, Police or Fire Departments.
- Prepare a family plan that covers activities before, during and after flood emergencies.

Flood Protection Measures Can



A man looks through a travel trailer after it has been damaged and moved during a flood event.

Every year, flooding causes more property damage in the United States than any other type of natural disaster. While construction practices and regulations have made new homes less prone to flooding, many existing structures remain susceptible. You can protect your property through a variety of measures that can vary in complexity and cost. Raising a house above the flood level is the best property protection method short of moving the building entirely out of the floodplain. If a building cannot be removed from harm's way, it can be protected on site. In areas of low flood threat, such as infrequent shallow flooding, barriers, and dry and wet flood proofing, can be effective approaches. Other property protection measures you can take include:

- * Annually inspect your hurricane straps for corrosion and replace them if necessary.
- * Annually inspect your pilings and floor system for splitting, rotting, termite damage, or rusted connecting bolts if your home is on pilings.

- * Raise your furnace, water heater, and electric panel to higher floors or the attic if they are in areas of your home that may be flooded. Raising this equipment will prevent damage. An undamaged water heater may be your best source of fresh water after a flood.

- * Avoid backflow of sewer lines by closing off all sewer line entries into the house. As a last resort, when floods threaten, use large corks or stoppers to plug showers, tubs, or bathtubs.

- * Seal walls in basement with waterproofing compounds to avoid seepage through cracks.

- * Move furniture and any other valuables to higher floors.

- * Keep materials like sandbags, plywood, plastic sheeting, and lumber handy for emergency waterproofing.

- * Keep insurance policies, documents, and other valuables in a safe-deposit box.

- * Keep watercourses free of fill/debris. Many people fail to recognize how regarding their yard,



When elevating a structure to mitigate against flooding, it is important to elevate all outdoor appliances as well, like water heaters and this air conditioning unit.

Floodplain Regulations Help Protect Property & Encourage Responsible Development



The unique natural water resources that distinguish Baldwin County as a top choice for living, recreation and employment, also require unique land use measures to protect and maintain them for future generations. Baldwin County's floodplain regulations are intended to protect private and public property, protect the environment, encourage responsible development and prevent the degradation and deterioration that results from unrestricted use and development.

Always check with the County Planning and Building Inspection Departments before you build, fill, alter, or grade on your property. All new developments, or any alterations, additions, or modifications to your building or land require a permit. Before you begin construction find out which permits and building standards apply by contacting the Baldwin County Building Inspection Department, Planning and Zoning Department, or the Highway Department to determine if you will be required to obtain a permit or to report any possible unauthorized development within the flood-

plain.

In addition to regular building permits, special regulations apply to construction in the floodplain and in floodways. No construction, including filling, is allowed in the mapped floodway without an engineering analysis that shows the project will not increase flood damage elsewhere. Any activity outside the floodplain but within a natural or man-made watercourse also requires a permit.

Elevation or flood-proofing may be required if you plan to substantially improve your existing structure located within a FEMA flood zone (the cost of the improvement or addition is 50 percent of the value of the existing structure). If your property is substantially damaged, Federal regulations may require you to elevate or flood-proof as you rebuild. The document titled - "Answers to Questions about Substantially Damaged Buildings" (FEMA-213, May 1991) will help answer questions on this topic and can be obtained free by calling 1-800-480-2520 or by online access at <http://www.fema.gov/flood213>.

If you suspect suspicious activity on whether or not a site obtained a permit, or was required to obtain a permit, contact the Baldwin County Planning & Zoning Department, Building Inspection Office or the Highway Department.



Increased Cost of Compliance (ICC) Coverage an Important Part

After a flood event, flood insurance policyholders are assured their claim will be paid and they will have additional options to fund rebuilding.

Flood insurance policyholders also may be eligible for increased Cost of Compliance (ICC) coverage benefits. ICC coverage is an important part of most flood insurance policies. ICC coverage provides:

- * Up to \$30,000 to help property owners who have been substantially damaged to reduce the risk of damage from future floods by elevating, flood proofing (for nonresidential structures), demolishing or re-locating their building or home
- * ICC coverage in addition to the building coverage for the repair of the actual physical damages from flooding; however, the total payout on a policy may not exceed \$250,000 for residential buildings and \$500,000 for non-residential buildings.

To be eligible for ICC funds, a building must be insured under the National Flood Insurance Program (NFIP) and must also either (1) be determined by a local building official TO BE substantially damaged or (2) qualify as a repetitive loss structure.

Substantial damage is flood-related damage that equals or exceeds 50 percent of the value of the building. When repaired, the structure must comply with local floodplain management ordinances. If the total damage from flooding is less than 50 percent of the market value of the building, ICC coverage is not available under the substantial damage provision.

Repetitive loss is flood-related damage that occurs twice over a period of 10 years, with the cost of each repair averaging 25 percent or more of the pre-flood market value of the building. Because the 25 percent cost is an average, it need not be equally distributed.

For example, if the damage was 35

percent of the value of the building in the first event and 15 percent of the value in the second event, the policyholder would qualify for ICC coverage. A flood insurance claim must have been paid in both cases, and it applies only if the community has adopted a repetitive loss

- * provision in its floodplain management ordinance.

ICC coverage can help pay for four different types of mitigation activities to bring a building into compliance with the community's floodplain management regulations. These activities include elevation, flood proofing, relocation and demolition.

Elevation is the most common means of reducing a building's flood risk. The process consists of raising the building to or above the Base Flood Elevation (BFE). While NFIP policy requires only the lowest floor of the building to be raised to the BFE, some states and communities enforce a "freeboard" requirement, which mandates that the building be raised above the BFE to meet the community's flood protection level.

- * For example, if the BFE for a structure is 4 feet, and the community adopts a 3-foot freeboard requirement, ICC coverage would help pay the cost of elevating the building to meet the 7 foot requirement.

Flood proofing applies only to nonresidential buildings. For a building to be certified as flood proof, it must be watertight to a level 1 foot above the BFE, or to the level of the freeboard requirement (if the community enforces one). Flood proof means that the walls must be substantially impermeable to water and designed to resist the stresses imposed by floods. Flood proofing techniques include installation of watertight shields for doors and windows, drainage collection systems, sump pumps

Baldwin County's drainage system is used to carry water away from homes and businesses into rivers and streams. It is important to consistently maintain this system so it can be used to full capacity. Proper drainage helps to reduce the risk of flooding and maintain the integrity of the road system. Baldwin County maintains all drainage ways and structures located on the County rights of way and County owned property.

Baldwin County prohibits any dumping of trash or yard debris in these areas, which could result in increased flooding or damages in areas that would otherwise be protected. Owners whose property is located within an identified flood area must ensure that their drainage infrastructure is kept in working order and free from any obstruction that could impede the free flow of water. If you experience problems in any of the County rights of way or wish to report any violations, you are encouraged to contact the County Engineering Department at 251.972.6897, 251.937.0371 or 251.990.4635.

Please help Baldwin County to ensure the capacity of this system. Keep streams and other conveyances that carry rainfall runoff through your property free of obstructions and debris such as trees, tall bushes, and trash.



Drainage systems obstructed with trash or other debris can cause an increased risk of flooding since the floodwaters have no place to drain. The increased flooding caused by those obstructed drains can severely undermine the local roadway infrastructure structure, leading to potential health and safety hazards.

Never dump or throw anything into the streets or storm drainage system. To do so is a violation of the Baldwin County Storm Water Quality Management Ordinance. If you see trash or debris in the storm drainage system, contact the Baldwin County Engineering Department immediately.

ICC Coverage Continued From Page 10

and check valves; reinforcement of walls to withstand floodwater pressures; use of sealants to reduce seepage through and around walls; and anchoring the building to resist flotation, collapse and lateral movement.

Relocation involves moving the entire building to another location on the same lot or to another lot, usually outside the floodplain.

Relocation can offer the greatest protection from future flooding; however, if the new location is still within the Special Flood Hazard Area, the building must still be NFIP-compliant, meaning it must be elevated or flood proofed (if nonresidential).

Demolition may be necessary in cases where damage is too severe to warrant elevation, flood proofing or relocation; or the building is in such a poor condition

- * that it is not worth the investment to undertake a combination of the above activities.
- * All applicable permits must be obtained prior to demolishing the building.

The property may be redeveloped after demolition is complete, subject to all applicable federal, state and community laws and requirements.

A FEMA/State Disaster recovery center set up in Bay Minette



Continued on Page 11

HOME CONTACT INFO SUBMITTING PRESS RELEASES CLASSIFIED ADVERTISING RETAIL ADVERTISING



Now Available at
**ROUSES
MARKETS**



GAMES & BOARDS
BEACH GEAR
HATS & APPAREL
INFLATABLES
AND MORE

Rouses Market #54
Gulf Shores, AL
1545 Gulf Shores Pkwy.
Hours: 7am-12am Daily

Rouses Market #76
Orange Beach, AL
25405 Perdido Beach Blvd.
Hours: 7am-12am Daily

HOME RETAIL ADVERTISING NEWS PHOTOS FUNNY BONES FOOD CLASSIFIEDS WHAT'S HAPPENING



Home / April 11 News / Earth Day Mobile Bay April 21 at Fairhope Pier

Earth Day Mobile Bay April 21 at Fairhope Pier

By Mullet Wrapper on April 10, 2018

SHARE TWEET SHARE SHARE 0 COMMENTS



Earth Day Mobile Bay April 21 at Fairhope Pier

Earth Day Mobile Bay returns for its 29th year with an all-day event at the Fairhope Pier Park on Saturday, April 21. Exhibits will be open from 10 a.m. to 6 p.m. and Live music is scheduled from 10 a.m. to 7 p.m.

Alabama's largest Earth Day celebration, Earth Day Mobile Bay is again expected to attract over 6,000 participants there for the free event celebrating the environment and the earth.

Earth Day Mobile Bay will feature local vendors of green and earth-friendly solutions including windmills, efficient heating and cooling systems including solar, geothermal, insulation, green building, and local and naturally healthy food sources, Hybrid cars and Electric Cars.

Catch the Free Shuttle at the Big Lots parking lot in the Eastern Shore Shopping Center. This is also the parking lot for Fairhope Health Foods and Sunflower Café. BRATS trolley shuttle buses will run from parking to Pier Park beginning at 10 a.m. Trips are free. For more info, email info@earthdaymobilebay.org or call 251-990-8662 or visit EarthDayMobileBay.org or Facebook.

JUNE 6TH-20TH ISSUE

[Click Here To Download June 6th-20th Issue](#)



ADVERTISEMENT

ARCHIVES

Archives

Select Month



RELATED ITEMS APRIL 11 NEWS

[← Previous Story](#)

FBIISF donates \$39,550 to UWF in support of Larry Butler Award

[Next Story →](#)

17 year old Gulf Shores native Mason Broussard takes pro skimboarding title

YOU MAY ALSO LIKE...



Marketplace, Music & Movie April 20 in Foley's Heritage Park



Tickets still available for April 14 Art For Heart Gala



South Baldwin Community Theatre Presents "The Snow White Variety Show" by Brian D. Taylor

[In Mullet We Trust](#)

[Retail Advertising](#) [Classified Advertising](#) [Contact Info](#) [Submitting Press Releases](#)



BALDWIN COUNTY COMMISSION

Solid Waste Department

FOR IMMEDIATE RELEASE



MEDIA CONTACT:

Terri Graham
Development & Environmental Director
(251) 972-6878
tgraham@baldwincountyal.gov

WHO: Baldwin County Commission Solid Waste Department

WHAT: **Baldwin Clean Sweep 2019**

WHEN: Saturday, March 2, 2019
7 a.m. – 3 p.m.

WHERE: **Magnolia Landfill** **MacBride Landfill** **Bay Minette Transfer Station**
15140 County Road 49 14200 County Road 64 43205 Nicholasville Road
Summerdale, AL 36580 Loxley, AL 36551 Bay Minette, AL 36507

WHY: To provide Baldwin County residents a FREE day to discard of any unwanted debris and waste to encourage proper disposal of waste in Baldwin County and discourage illegal dumping and piling of debris on roadways.

IT'S TIME FOR BALDWIN COUNTY RESIDENTS TO CLEAN UP FOR FREE WITH BALDWIN CLEAN SWEEP ON MARCH 2, 2019

BALDWIN COUNTY, AL, February 25, 2019 – The Baldwin County Solid Waste Department will hold its annual Baldwin Clean Sweep 2019 on Saturday, March 2, 2019. All Baldwin County residents are encouraged to participate in this event and dispose of debris for FREE.

Baldwin County residents can bring yard waste, Christmas trees, construction debris, cardboard, tires, electronics, furniture, appliances, scrap metal, carpet, paint, household hazardous waste and other non-putrescible waste FREE of charge to the Magnolia Landfill, the MacBride Landfill and the Bay Minette Transfer Station during Baldwin Clean Sweep 2019 on Saturday, March 2, 2019, from 7 a.m. – 3 p.m. No regular household garbage will be accepted at this event.

Baldwin County residents must provide proof of residency in Baldwin County as well as name, address and phone number to discard of their waste for free during Baldwin Clean Sweep 2019. Baldwin County Solid Waste Department staff will be present to provide detailed instructions for unloading waste materials on the day of the event.

Normal operating procedures and charges will be in effect for commercial waste disposal, putrescible waste disposal and commercial tire disposal.

In addition to Baldwin Clean Sweep 2019, the Baldwin County Solid Waste Department collects waste cooking oil for recycling for free every day at all Baldwin County Landfill locations.

For more information about Baldwin Clean Sweep 2019 visit www.baldwincountyal.gov.

###

[Government](#)[Departments](#)[Community](#)[How Do I?](#)[Services](#)[Payments](#)

Welcome to Baldwin County, Alabama

Welcome to the official website for Baldwin County. Our county seat is located in Bay Minette, Alabama. We strive to make this website helpful to you, the citizens and businesses that live and work in Baldwin County. Read more [About Baldwin County](#) . . .

Baldwin County, ten years older than the State of Alabama, remains Alabama's largest county, more on our [History](#) . . .

Stay up to date, view [Baldwin County's Community News and Information](#).

[View our Community Gallery](#), beautiful photographs captured by our local citizens and visitors.

Most Visited

- [Probate](#)
- [Search Records](#)
- [Revenue](#)
- [Recording](#)
- [Maps](#)
- [Online Payments](#)
- [Road Notices](#)
- [Solid Waste](#)
- [Services](#)

**** Live Chat ****

[Employee Portal](#)

Contact Baldwin County Citizen Service Center

251.937.9561
251.928.3002
251.943.5061

[Reporting Fraud, Waste & Abuse](#)

[Email Citizen Services](#)
[Holidays and Operating Hours](#)
[Email Webmaster for Web Inquiry](#)

Follow us on:

[Maps](#)[Open Baldwin](#)

Announcements

- [Alabama Announces Bicentennial Celebration](#)
- [View the Baldwin County FY 2019 Budget Here](#)
- [Changes In Baldwin County Voting Precincts](#)
- [Baldwin County Sewer Utilities Informational Meeting May 16, 2019](#)

Public Notices

- [20190529 – Public Notice – FY 2019-2020 Budget Deliberations](#)
PDF, 99.48 KB
- [20190529- Public Notice - BCHDC Meeting June 12, 2019](#)
PDF, 97.30 KB

[View All ...](#)

Calendars

- [Baldwin County Meetings](#)
- [Baldwin County Public Hearings](#)
- [Events / County Parks](#)
- [Baldwin County Holidays](#)
- [Emergency Management Agency \(EMA\)](#)

[Government](#)[Departments](#)[Community](#)[How Do I ?](#) **Planning Home**[-Contact Us](#)
[-Staff](#)[Zoning Ordinances](#)[Stormwater Information](#)[Planning Programs](#)[CRS Flood Insurance](#)[Planning Commission](#)[Board of Adjustment](#)[Fee Schedule](#)[Outlying Airfields](#)[Maps](#)[Historic Resources](#)**Forms & Applications**[-Zoning](#)
[-Land Use Certificate Applications](#)
[-Land Use Certificate Checklists](#)
[-Planned Residential Developments](#)
[-Location Verification Requests](#)[-Subscribe to Get Notified](#)[Links](#)[Services](#)[Payments](#)[Maps](#)[Open Baldwin](#)[home](#) / [Departments](#) / [Planning & Zoning](#)**Planning & Zoning Home**

The Baldwin County Planning & Zoning Department was established in 1996 to oversee the County's growth management activities. This includes administration of the County's land development regulations and management and implementation of various community development and economic development policies and programs. In addition, the department provides staff support for the Baldwin County Planning and Zoning Commission and the various Boards of Adjustment in the zoned areas.

[Baldwin County Master Plan – 2013 Approved and Adopted](#)[Online Submittal of Zoning Verification Requests](#)[2019 Flood Hazard Protection Newsletter](#)[FloodSmart.gov](#)[Current Planning Programs](#)**Contact Us****Physical Addresses:**

22070 Highway 59
Robertsdale, AL 36567
([view map](#))

Phone: 251.580.1655
Fax: 251.580.1656

Foley Satellite Office

201 East Section Avenue
Foley, AL 36535
([view map](#))

Phone: 251.972.8523
Fax: 251.972.8520

Mailing Address:

Planning & Zoning
22251 Palmer Street
Robertsdale, AL 36567

[Email us](#)[View Staff](#)

[Government](#)[Departments](#)[Community](#)[How Do I ?](#) Search**Planning Home**

- Contact Us
- Staff

[Zoning Ordinances](#)[Stormwater Information](#)[Planning Programs](#)[CRS Flood Insurance](#)[Planning Commission](#)[Board of Adjustment](#)[Fee Schedule](#)[Outlying Airfields](#)[Maps](#)[Historic Resources](#)**Forms & Applications**

- Zoning
- Land Use Certificate Applications
- Land Use Certificate Checklists
- Planned Residential Developments
- Location Verification Requests

- Subscribe to Get Notified

[Links](#)**Services****Payments****Maps**[Open Baldwin](#)[home](#) / [Departments](#) / [Planning & Zoning](#) / Stormwater Information**Stormwater Information**

[Baldwin County Storm Water Management Plan Phase II](#)[NPDES Permit No. ALR040042](#)[Baldwin County Storm Water Management Program \(SWMP\) Plan Revision, 2017](#)[Recent News Articles](#)**MS4 Annual Report**

- [2015, Baldwin County MS4 Annual Report](#)
- [2016, Baldwin County MS4 Annual Report](#)
- [2017, Baldwin County MS4 Annual Report](#)
- [2018, Baldwin County MS4 Annual Report](#)

Studies

- [wolf-bay-watershed-study](#)
PDF, 1.35 MB
- [fish-river-amp-magnolia-river-watershed-study](#)
PDF, 1.94 MB

Continue viewing more links below:

- [Regulators](#)
- [QCI Training](#)
- [Technical Resources](#)
- [Alabama Coastal Foundation](#)
- [Mobile Bay National Estuary Program](#)
- [Baldwin County Master Environmental Education \(MEE\) Program](#)

[Government](#)[Departments](#)[Community](#)[How Do I ?](#) **Planning Home**[-Contact Us](#)
[-Staff](#)[Zoning Ordinances](#)[Stormwater Information](#)[Planning Programs](#)[CRS Flood Insurance](#)[Planning Commission](#)[Board of Adjustment](#)[Fee Schedule](#)[Outlying Airfields](#)[Maps](#)[Historic Resources](#)**Forms & Applications**[-Zoning](#)
[-Land Use Certificate Applications](#)
[-Land Use Certificate Checklists](#)
[-Planned Residential Developments](#)
[-Location Verification Requests](#)[-Subscribe to Get Notified](#)[Links](#)**Services**[Payments](#)[Maps](#)[Open Baldwin](#)[home](#) / [Departments](#) / [Planning & Zoning](#) / CRS Flood Insurance Program**Community Rating System (CRS) Flood Insurance Program****CRS Flood Insurance Program**[View Informative Documents](#)**Background**

The National Flood Insurance Program (NFIP) provides federally backed flood insurance that encourages communities to enact and enforce floodplain regulations. To be covered by a flood insurance policy, a property must be in a community that participates in the NFIP. Baldwin County has been participants since 1978 and currently holds a Class 6 Building Code Effectiveness Grading Schedule (BCEGS) grade for One & Two Family dwellings and Commercial & Industrial buildings.

Under the Community Rating System (CRS), there is an incentive for communities to do more than just regulate construction of new buildings to minimum national standards. Under the CRS, flood insurance premiums are adjusted to reflect community activities that reduce flood damage to existing buildings, manage development in areas not mapped by the NFIP, protect new buildings beyond the minimum NFIP protection level, help insurance agents obtain flood data, and help people obtain flood insurance.

Objectives

The objective of the CRS program is to reward communities that are doing more than meeting the minimum NFIP requirements to help citizens prevent or reduce flood losses. The goal of the CRS program is to encourage, by the use of flood insurance premiums adjustments, community and state activities beyond those required by the NFIP.

Baldwin County has voluntarily participated in the Community System Program since 1994 and as a result has reduced flood insurance policies 10% for flood prone areas, and 5% in areas not designated as flood prone.

[View Creditable Activities](#)**Repetitive Loss Areas**

According to information received from the Federal Emergency Management Agency (FEMA), unincorporated Baldwin County had 406 repetitive loss properties in 2006. A repetitive loss property is one for which two or more National Flood Insurance Program (NFIP) losses of at least \$1,000 each have been paid since 1978. Many of the repetitive loss properties coincide with hurricane events. The repetitive loss properties are located in several distinct geographic areas: Josephine/Perdido Beach, Ono Island, Fish River; Point Clear/Eastern Shore, Styx River and Bon Secour.

Property Protection

Property protection activities are usually undertaken by property owners on a building-by-building or parcel basis. They include: relocation, acquisition, building elevation, flood-proofing, sewer backup protection, and insurance.

Baldwin County has participated in the FEMA Hazard Mitigation Grant Program since Hurricane Opal. Since this time, Baldwin County has acquired several properties that were repetitive loss properties and assisted property owners in obtaining funds to elevate structures that were also considered as a repetitive loss property.

Public Information Activities

Baldwin County provides public information to advise property owners, potential property owners, and visitors about hazards, ways to protect people and property from the hazards, and the natural beneficial functions of floodplains. Activities include flood determinations and technical assistances, public outreach and education, and real estate disclosure.

[FEMA Publications](#)

[Government](#)[Departments](#)[Community](#)[How Do I ?](#) **Highway Home**[Staff](#)[County Maintained Roadways](#)[Highway Services](#)[-Driveway Permit Application](#)
[-Permit Division](#)[Road Notices](#)[Stormwater Studies](#)[Subdivision Regulations](#)[ADA - Public ROW Barrier
Analysis and Transition Plan
Draft](#)[Forms / Permit Applications](#)
[-Subdivision Application Forms](#)[Other Helpful Links](#)[Services](#)[Payments](#)[Maps](#)[Open Baldwin](#)[home](#) / [Departments](#) / Highway Department

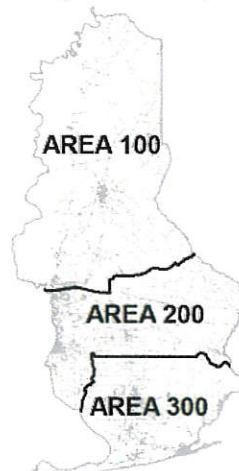
Welcome to the Baldwin County Highway Department



The Baldwin County Highway Department is committed to constructing and maintaining the infrastructure under our control in a reasonably safe condition for travel.

This department is responsible for the administration, maintenance, and construction of over 1,600 miles of dirt, gravel, and paved roads.

The County is divided up into three (3) maintenance areas. Each area has a supervisor, assistant supervisor, clerk, and crews that are responsible for the day-to-day maintenance of the County maintained roadways in their respective areas. This includes the grading of dirt and gravel roads, pothole repairs, and removal of limbs and vegetation to maintain adequate sight distances.

[View a larger detailed PDF map of the maintenance barns](#)

Area 100 Maintenance covers the northern part of the County. This includes the areas north of I-10 (west of State Highway 59) and north of Truck Trail 17 (east of State Highway 59).

[Contact Area 100 Maintenance](#)

Area 200 Maintenance covers the central and western part of the County. It includes the area south of I-10 (west of State Highway 59) down to County Road 36, the west side of County Road 36, the west side of Fish River, and south of Truck Trail 17 (east side of State Highway 59) down to County Road 36/Blackwater River.

[Contact Area 200 Maintenance](#)

Area 300 Maintenance covers the southern part of the County including the Fort Morgan peninsula.

[Contact Area 300 Maintenance](#)**Contact Us**

Physical Address:
Baldwin County
Highway Department
Central Annex II
(3rd & 4th Floors)
22070 Highway 59
Robertsdale, AL 36567

Mailing Address:
Baldwin County
Highway Department
Post Office Box 220
Silverhill, AL 36576

North Baldwin
Phone: 251.937.0371
Fax: 251.937.0201

Central Baldwin
Phone: 251.972.6897
Fax: 251.937.0201

South Baldwin
Phone: 251.990.4635
Fax: 251.937.0201

[Government](#)[Departments](#)[Community](#)[How Do I ?](#)

[Solid Waste Home](#)
- Staff

[Garbage Collection Services](#)

[Landfills](#)

[Recycling](#)

[FAQ](#)

[Services](#)

[Payments](#)

[Maps](#)

[Open Baldwin](#)

[home](#) / [Departments](#) / Solid Waste

Solid Waste Department

***To ensure all items placed at the curb for garbage pickup are collected, please onl**

PAY YOUR GARBAGE / TRASH BILL HERE

We accept Visa, MasterCard & Discover
(Sorry, we do not take American Express Cards)

COLLECTION SERVICES

Participation in the solid waste residential collection program, provided by Baldwin County Commission, is mandatory for residents of the unincorporated areas of Baldwin County, Alabama. This is part of an effort to reduce and prevent illegal dumping and littering. To report illegal dumping or littering, contact Solid Waste, and ask for Litter Patrol. Garbage Collection maintains a normal schedule on all holidays, except Thanksgiving and Christmas.

CART USE GUIDELINES

RESIDENTIAL GARBAGE SERVICE APPLICATION

LANDFILLS

Magnolia and MacBride Landfills, and Bay Minette Transfer Station's information.

RECYCLE

Baldwin County cares about the environment and has several container locations throughout the county where you can place items for recycling. The county does not have a curbside recycling program at this time.

FAQ

Solid Waste's Frequently Asked Questions.

Contact Us

BILLING OFFICE

Physical & Mailing Address:
22251 Palmer Street
Robertsdale, AL 36567
([view map](#))

M - F, 8:00 AM to 4:30 PM
except on [County Approved Holidays](#)

Phones & Fax:
251.972.6878
251.990.4621
251.937.0249

Fax: 251.970.4013

[Email](#)

[Contact the Landfills](#)

[Government](#)[Departments](#)[Community](#)[How Do I?](#)

[Solid Waste Home](#)
- Staff

[Garbage Collection Services](#)

[Landfills](#)

[Recycling](#)

[FAQ](#)

[Services](#)

[Payments](#)

[Maps](#)

[Open Baldwin](#)

[home](#) / [Departments](#) / [Solid Waste](#) / Recycling

Recycling



Baldwin County cares about the environment and has several container locations throughout the county where you can place items for recycling. The county does not have a curbside recycling program at this time.

[Recycling Drop-off Sites and Map of Locations](#) | [Recycling Details](#)

Recycle Survey Results

Specialty Recycling

We are currently not set up to recycle electronics. However, all of the [landfills](#) have a roll off container that accepts residential electronics for disposal with a fee.

Seasonal & Storm Recycling

[Christmas Tree Recycling](#)

* Seasonal and storm recycling can change, please check website for updated information during those periods.

**If the item you wish to recycle is not listed under our accepted items, you will need to contact a private recycling company or possibly a nonprofit organization to assist you in disposing of or finding another entity in need of the items.*

[Government](#)[Departments](#)[Community](#)[How Do I ?](#)

[Solid Waste Home](#)
- Staff

[Garbage Collection Services](#)

[Landfills](#)

[Recycling](#)

[FAQ](#)

[Services](#)

[Payments](#)

[Maps](#)

[Open Baldwin](#)

[home](#) / [Departments](#) / [Solid Waste](#) / [Recycling](#) / Recycle Locations

Recycling Locations

WE DO NOT RECYCLE GLASS

[Map of Locations](#)

Stockton Post Office
42925 Hodgson Rd
Stockton, AL

MacBride Landfill
14200 County Road 64
Loxley, AL

Bicentennial Park
51233 State Hwy 225
Stockton, AL

Spanish Fort Kids Park
30701 Ember Ln
Spanish Fort, AL

Commission Administration Building
3rd Street - Bay Minette, AL

Summerdale
204 NW 1st Street
Summerdale, AL

Bay Minette Transfer Station
4291 Nicholasville Road
Bay Minette, AL

Fort Morgan
Fort Morgan Rd., Fire Station #2
Between Mile Markers 5 & 6

Five Rivers Delta Center
30945 Five Rivers Blvd.
Spanish Fort, AL

Perdido Beach Volunteer Fire Department
8450 Escambia Ave
Perdido Beach, AL

Fairhope Courthouse
1100 Fairhope Avenue
Fairhope, AL

Silverhill Little Hall
4th Ave (By Water Tower)
Silverhill, AL

Mullet Point Park
13203 County Road 1
Fairhope, AL 36532

Robertsdale, Central Annex
(Near PZK Hall)
22251 Palmer St.
Robertsdale, AL

**Elsanor Community Center/
Old Volunteer Fire Department**
23741 US Hwy. 90
Elsanor, AL

Elberta Volunteer Fire Dept.
13125 Chicago St
Elberta, AL

Weeks Bay State Park
11300 Hwy. 98
Fairhope, AL

Camp Beckwith
10400 Beckwith Lane
Fairhope, AL

Foley Courthouse
201 E. Section Street
Foley, AL

Magnolia Landfill
15140 County Road 49
Summerdale, AL

Josephine Volunteer Fire Dept.
6824 County Road 95
Josephine, AL

Magnolia Springs Volunteer Fire Dept.
14809 Gates Ave
Magnolia Springs, AL 36555

Orange Beach Public Works
4400 William Silvers Pkwy

Orange Beach Community Center
27435 Canal Road

Orange Beach, AL

Orange Beach, AL

Bay Minette City Hall
301 D'Olive St
Bay Minette, AL

Stapleton Volunteer Fire Department
36276 State Hwy 59
Stapleton, AL

Perdido Volunteer Fire Department
(NOT CURRENTLY AVAILABLE -
PARKING LOT UNDER CONSTRUCTION)
22190 County Road 47
Perdido, AL

Lillian Volunteer Fire Dept.
11331 County Road 91
Lillian, AL

[VIEW ACCEPTABLE ITEMS FOR BALDWIN COUNTY RECYCLING DROP OFF SITES](#)

For additional information, call 251.972.6878

[Government](#)[Departments](#)[Community](#)[How Do I ?](#)

Search

[Building Inspection Home](#)[- Contact Us](#)[Staff](#)[Building Codes](#)[Coastal AE Zone](#)[Coastal VE Zone](#)[Elevation Certificates \(FY 2009-2010\)](#)[Fortified Homes](#)[-NEW Residential Homes](#)[-EXISTING Residential Homes](#)[Flood Hazard Management Plan](#)[-Master Plan Feedback Form](#)[-FHMP Meeting Minutes](#)[Flood Map Risk \(Public Outreach\)](#)[Commercial Permit Requirements](#)[- Commercial Application](#)[Residential Permit Requirements](#)[- Residential Application](#)[Online Permitting \(Trades Permits Only\)](#)[Quicklinks](#)[Services](#)[Payments](#)[Maps](#)[Open Baldwin](#)[home](#) / [Departments](#) / Building Inspection

Building Inspection Department

We are responsible for administering and enforcing all applicable building codes with regard to residential and commercial construction in the permitting jurisdiction of the unincorporated areas of Baldwin County, as well as providing assistance to our customers so that they may understand and meet the code requirements for their project. In order to protect the health, safety and welfare of the citizens in the permitting jurisdiction of the unincorporated areas of Baldwin County, all construction must meet a series of requirements set forth by specific building codes. This includes new construction, additions to existing structures and remodeling. Both residential and commercial construction must meet these codes, and it is our job to enforce them.

The current codes adopted by Baldwin County Commission as of January 17, 2012 and will be enforced beginning January 17, 2012 are as follows:

[International Building Code, 2012](#)[International Gas Code, 2012](#)[International Mechanical Code, 2012](#)[International Plumbing Code, 2012](#)[International Residential Code, 2012](#)[International Energy Conservation Code, 2012](#)[National Electric Code, 2011 for Commercial Buildings & residential Buildings containing more than two \(2\) dwelling units.](#)[Baldwin County Supplemental Code for Residential Building in addition to the IRC 2012 code.](#)[Local Wind Load code - 3 second gust winds: applicable to the 2012 IRC only](#)[130 mph - South of I-10](#)[120 mph - I-10 North to I-65](#)[110 mph - I-65 North to County line](#)

Contact Us

Physical & Mailing Addresses

Foley

[Satellite Courthouse \(map\)](#)

201 East Section Avenue

Foley, AL 36535

251.943.5061, Ext. 2810

251.972.6837

Fax: 251.972.6820

Fairhope

[Satellite Courthouse \(map\)](#)

1100 Fairhope Avenue

Fairhope, AL 36532

251.928.3002, Ext. 2610

251.990.4641

Fax: 251.990.4642

[Government](#)[Departments](#)[Community](#)[How Do I ?](#)

[CIS Home](#)
[- Contact Us](#)

[Electronic Use Policy](#)

[Citizen Service Call Center](#)

[A to Z Guide](#)

[Baldwin County GIS Viewer](#)

Services

Payments

Maps

Open Baldwin

[home](#) / [Departments](#) / [Communications & Information Systems-CIS](#) / Communications GIS Mapping

Communications GIS Mapping

Internet Mapping Services:

**** new release now compatible with most common browsers & mobile browsers ****

[Baldwin County GIS Map Viewer](#)

[Revenue Commission Viewer](#)

For more information regarding Baldwin County's Geographic Information Systems contact:

[Kenneth McIlwain](#) - GIS Manager 251.580.2535



Resilience Meeting Agenda

Project Name:	Baldwin County
Date and Time:	Thursday, January 17, 2019 at 10:00 AM
Place:	Foley Civic Center 407 E. Laurel Avenue Foley, AL 36535

Share Meeting Objectives

- To help communities better understand their flood risk
- To review and discuss Risk MAP non-regulatory products and datasets and how they can be used to help make decisions to reduce flood risk
- Strategies to reduce risk and improve resilience to floods
- The importance of and opportunities for communicating about flood risk with constituents

Introductions

- CTP and Contractor (AL OWR & Wood E&IS, Inc.)
- FEMA project team, including roles and responsibilities
- State and other federal agencies
- Community stakeholders


Present Flood Risk Data and Strategies to Reduce Flood Risk

- Review and discuss non-regulatory Risk MAP flood risk products
- Review Areas of Mitigation Interest

Emphasize Mitigation Planning and Communication

- Share mitigation activity ideas
- Discuss Best Practices
- Share related best practices from local sources
- Discuss Mitigation Actions
- Describe resources available

Communication Roles and Responsibilities

- Explain sharing flood risk information with constituents
 - Describe Community Outreach Plan
- 

SAVE THE DATE!

South Alabama Regional Planning Commission



Planning & Zoning Commission TRAINING

IMPROVING THE PLANNING & DEVELOPMENT PROCESS

SARPC will be providing another training event for all member governments to better understand & improve the effectiveness of their planning commission meetings. This 1-day workshop will be taught by Katherine Ennis, AICP, and will provide detailed instruction from application through the Planning Commission review process. Planning Commissioners, Building Officials, Elected Officials, and planning staff are encouraged to attend. Participants will receive resource materials & step-by-step instruction on how to review applications.

WHEN: Thursday, March 28, 2019

TIME: 9:30am-1:30pm | Hot Lunch Provided

WHERE: Alabama State Port Authority Offices
International Trade Center | 250 No. Water Street
Mobile, AL

COST: \$25/Person

RSVP: Paula McGlasker by March 20, 2019
pmcglasker@sarpc.org | 251-706-4611

- ✓ Learn how to accurately read & review site plans & subdivision plats
- ✓ Understand the proper steps & levels of review for all applications
- ✓ Know how to reference the zoning ordinance & subdivision regulations
- ✓ Create a stream-lined & efficient development application package
- ✓ Better organize planning commission meetings & work sessions



Baldwin County QCI Certifications

- Allen, James	T5069
- Harville, Adam	T4152
- Holston, Michael	T4153
- Howell, Rodney	T4154
- Matthews, Jason	T4155
- Skipper, Hunter	T4156
- Warren, Charles	T4157
- White, Robert	T4158
- Younce, Joshua	T4159
- Thompson, Robert	T3268
- Gentry, Robert	T3264
- McWaters, Gabriel	T3265
- Meyer, William G.	T5070
- Propst, Douglas	T3266
- Nunnally, Joey	T4404
- King, Orie	T4581
- Lundy, Frank	31300
- Sharp, Mike	29814
- Mackey, Walter	40126
- Campbell, Michael	T3650
- Carroll, Kevin L.	T3001
- Howell, Jeremy	T1348
- Johnson, Burt A.	T4008
- Lundy, John Allen	T0924
- Peterson, Seth	T3754
- Peterson, Pete	T0797
- Ramer, Vincent	T0771
- Scott, Eric	T5466
- Sedlack, John	T0434
- Thweatt, Dustin	T4009

QCI Class

Name	location	Date
100		
Kevin Carroll	Mobile	July 10th
Michael Sharp	Mobile	July 10th
Rex Philippi	Mobile	July 10th
Henry Harville	Mobile	July 10th
Dylan Carlisle	Mobile	July 10th
Joey Kelmer	Mobile	July 10th
Rusty White	Mobile	July 10th
Bobby Gentry	Mobile	July 10th
200		
Paul Penry	Mobile	July 10th
Wayne Byrd	Mobile	July 10th
James Allen	Mobile	July 10th
300		
Johnny Jackson	Mobile	July 10th
Adam Harville	Mobile	July 10th
Doug Acker	Mobile	July 10th
Charley Wekley	Mobile	July 10th
Permits		
Mike Campbell	Mobile	July 10th
Vince Ramer	Mobile	July 10th
John Lundy	Mobile	July 10th
Traffic Operations		
Pete Peterson	Mobile	July 10th
Construction		
Jason Matthews	Mobile	July 10th
Jeremy Howell	Mobile	July 10th
Matthew Ulrich	Mobile	July 10th
Dustin Thweatt	Mobile	July 10th
Eric Scott	Mobile	July 10th
Orie King	Mobile	July 10th

**ASSOCIATION OF STATE
FLOODPLAIN MANAGERS, INC.**

CERTIFICATION BOARD OF REGENTS

HEREBY CERTIFIES THAT PURSUANT TO THE PROVISIONS OF THE CHARTER FOR THE
CERTIFIED FLOODPLAIN MANAGER PROGRAM

Daletha J. Hart, CFM

IS DULY REGISTERED AS AN

ASFPM CERTIFIED FLOODPLAIN MANAGER

IN TESTIMONY WHEREOF THIS CERTIFICATE HAS BEEN ISSUED BY THE AUTHORITY OF THE
CERTIFICATION BOARD OF REGENTS, CERTIFICATE NO. US-18-10693, ISSUED 10/24/2018. THIS
CERTIFICATE SHALL EXPIRE 1/31/2021, UNLESS RENEWED ACCORDING TO THE RULES OF THIS BOARD.

Louis T. Greenwell

CERTIFICATION BOARD OF REGENTS
PRESIDENT, LOUIS T. GREENWELL, GISP, CFM

Chad M. Berginnis

ASSOCIATION OF STATE FLOODPLAIN MANAG.
EXECUTIVE DIRECTOR, CHAD M. BERGINNIS, C.





Association of State Floodplain Managers, Inc.

575 D'Onofrio Drive, Suite 200 Madison WI 53719

Phone: 608-828-3000 | Fax: 608-828-6319 | Email: asfpm@floods.org | Web: www.floods.org

Executive Director
Chad M. Berginnis, CFM

Deputy Director Operations
Ingrid D. Wadsworth, CFM

Director Emeritus
Larry A. Larson, P.E., CFM

November 2, 2018

Mr. Vince Jackson
Baldiwin Cnty., AL
2225 Palmer St.
Robertsdale, AL 36567

Dear Mr. Jackson:

We are pleased to inform you that one of your staff, Daletha Hart, has successfully completed the process and examination to become an ASFPM Certified Floodplain Manager (CFM®). The ASFPM grants this certification only to those professionals who meet the requirements and complete a comprehensive examination on the programs and standards to reduce flood losses in the nation. More information about the ASFPM CFM® Program is easily accessible on our website at www.floods.org under Certification.

The goals of the ASFPM CFM® Program are to:

- Formalize a procedure to recognize and provide an incentive for individuals to improve their knowledge of floodplain management concepts;
- Enhance individual professional development goals;
- Promote an understanding of relevant subject matter that is consistent nationwide;
- Convey new concepts and practices; and
- Build partnerships among organizations and agencies that share the goal of advancing sound floodplain management.

We will continue to work with Daletha to maintain this important certification. We urge you to recognize and support this important professional step by your staff member.

Please feel free to contact me with any questions you may have.

Sincerely,

Chad Berginnis, CFM
Executive Director
Assn. of State Floodplain Managers

cc: Daletha J. Hart, CFM

Dedicated to reducing flood risk and losses in the nation.

Chair
Maria Cox Lamm, CFM
State Coordinator
SC Dept. Natural Resources
803-734-3672
coxml@dnr.sc.gov

Vice Chair
Brian Varrella, P.E., CFM
Hydraulics Team Lead
CO Dept. of Transportation
970-219-6496
brian.varrella@state.co.us

Treasurer
Amanda Flegel, P.E., CFM
Project Engineer
IL State Water Survey
217-300-3468
aflegel@illinois.edu

Secretary
Rebecca Pfeiffer, CFM
Floodplain Regulatory Team Lead
VT Agency Natural Resources
802-490-6157
rebecca.pfeiffer@vermont.gov

CERTIFICATE OF ATTENDANCE

Data-Driven Flood Research and First Floor Elevation (FFE) Mapping

This certificate is awarded to

DJ HART

MARCH 27, 2019

Total Training Hours - 1.0 CEC



South Alabama Flood Engagement Team (SAFE-T)

Amy Gohres

Amy Gohres, Alta Spring LLC

March 27, 2019

Date

UNIVERSITY OF NORTH ALABAMA CONTINUING EDUCATION AND OUTREACH CERTIFIED ALABAMA PLANNING AND ZONING OFFICIAL

*The Alabama Planning Institute, The University of North Alabama, and The Alabama
Chapter of The American Planning Association
cooperatively award CAPZO Recertification to*

JAMES RYAN

**Certified Alabama Planning and Zoning Official
for the CAPZO Recertification period July 20, 2018 through July 20, 2019**

*for successfully completing the CAPZO Recertification requirements in
education and training focusing on the skills essential to an effective
planning and zoning official*



A black ink signature of James Ryan.

Alabama Chapter, American
Planning Association

A blue ink signature of Joanne Butler.

University of North Alabama



University of North Alabama

Continuing Education and Outreach

THIS CERTIFICATE OF TRAINING IS PRESENTED TO

JAMES RYAN

Who has successfully completed 4 Hours (0.4 CEUs) of training
in an Instructor-led Course on

An Overview of Comprehensive and Regulatory Planning

Sharon Butler

Continuing Education and Outreach



July 20, 2018

Date