

# Project Schedule

## Resurfacing

Project Number	Project Description	Project Width	Project Length	Total Cost*	Actual Start	Actual Complete	Target Start	Target Complete
Project Type 01 - Resurfacing								
Area 100								
0203617	Resurface Pine Grove Rd from Tolbert Rd to Brady Rd N & along Brady Rd N to 8M City Limit (Group 1)	20.00	1.88	\$ 7,242			2/1/2017	4/15/2017
0207016	Resurface CR 112 from US 31 to Phillipsville Rd (Group 1)	24.00	4.10	17,807			2/1/2017	4/1/2017
Area 100 Totals		5.98		25,049				
Area 200								
0206515	Resurface Scenic Hwy 98 from Nelson Dr to CR 1	22.00	7.00	26,079			1/23/2017	3/4/2017
0203517	Resurface CR 34 from US 98 to SR 181 (Group 2)	24.00	2.00	782			3/1/2017	5/15/2017
0207216	Resurface CR 49 from CR 48 to SR 104 (Group 2)	22.00	2.00	129,736			3/1/2017	5/1/2017
0207416	Resurface Section St 5 from Twin Beech Rd to Fairhope City Limits (Group 2)	20.00	0.25	948			3/1/2017	5/1/2017
0218714	Resurface CR 112 from CR 64 to FL State Line	24.00	14.00	25,515			4/1/2017	8/31/2017
0204315	Widen & Resurface CR 13 from SR 104 to CR 48 and from CR 64 to Ottawa Dr (MPO)	24.00	2.00	25,818			5/1/2017	11/1/2017
0204117	Resurface Dominion Dr from US Hwy 98 to Mary Ann Beach Rd (Group 3)	20.00	1.03	182			5/15/2017	7/15/2017
0204217	Resurface Saddlebrook Circle from Dominion Dr to EOM (Group 3)	20.00	0.51	867			5/15/2017	7/15/2017
Area 200 Totals		28.79		209,927				
Area 300								
0207816	Resurface FBE from CR 12 to EOM	64.00	4.50	1,269,662	12/13/2016		12/16/2016	3/6/2017
0207116	Resurface CR 65 from CR 26 to US 98 (Group 2)	24.00	1.00	457			3/1/2017	5/1/2017
0203717	Resurface CR 10 from CR 65 to SR 59 (Group 3)	24.00	2.02	309			5/15/2017	7/1/2017
0207616	Resurface CR 20 from Milfin Rd to Milfin Creek Bridge (Group 3)	20.00	0.42	699			5/15/2017	7/15/2017
0207716	Resurface CR 20 from Elberta Town Limit to CR 95 (Group 3)	20.00	2.77	493			5/15/2017	7/15/2017
0207916	Resurface Milfin Rd (CR 20) from Foley City Limit to Elberta Town Limit (Group 3)	24.00	2.50	623			5/15/2017	7/15/2017
0208215	Resurface Keller Rd from SR 59 east to EOM (Group 3)	20.00	1.00	1,013			8/1/2017	8/15/2017
Area 300 Totals		14.21		1,273,255				
Totals for Project Type 01 - Resurfacing		48.98		\$ 1,508,231				

\*All costs are preliminary, unaudited project costs and include all labor, equipment, material, and contractor costs.



# Project Schedule

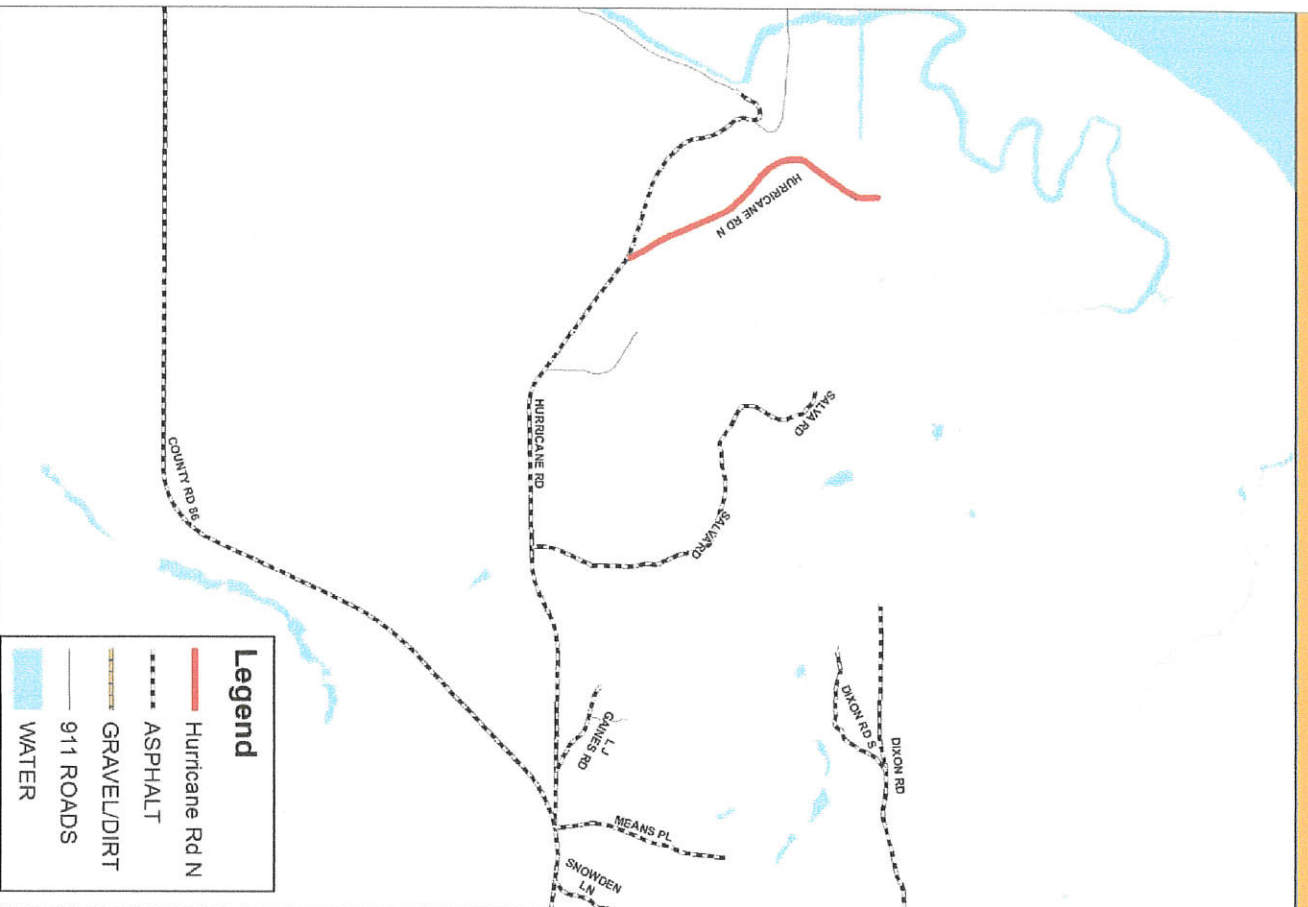
## Dirt Road Paving

Project Number	Project Description	Project Width	Project Length	Total Cost*	Actual Start	Actual Complete	Target Start	Target Complete
<b>Project Type 03 - Dirt Road Paving</b>								
<b>Area 100</b>								
0208515	G, D, B & Pave Hurricane Rd N from Hurricane Rd to EDM	20.00	0.63	\$ 65,363			3/1/2017	6/30/2017
<b>Area 100 Totals</b>			<b>0.63</b>	<b>65,363</b>				
<b>Area 200</b>								
<b>Area 200 Totals</b>			-	-				
<b>Area 300</b>								
<b>Area 300 Totals</b>			-	-				
<b>Totals for Project Type 03 - Dirt Road Paving</b>			<b>0.63</b>	<b>\$ 65,363</b>				

\*All costs are preliminary, unaudited project costs and include all labor, equipment, material, and contractor costs.



**Baldwin County Highway Department  
FY 2017 Dirt Road Paving Projects**



# Project Schedule

## New Road Construction / AFMs

Project Number	Project Description	Project Width	Project Length	Total Cost*	Actual Start	Actual Complete	Target Start	Target Complete
Project Type 04 - New Road Construction (Contractor)								
Area 100			-	-				
Area 200								
Area 300			-	-				
Area 100 Totals								
Area 200 Totals								
Area 300 Totals								
Totals for Project Type 04 - New Road Construction								
Project Type 08 - Accept for Maintenance								
Area 100			-	-				
Area 200			-	-				
Area 100 Totals								
Area 200 Totals								
Area 300 Totals								
Totals for Project Type 08 - Accept For Maintenance								

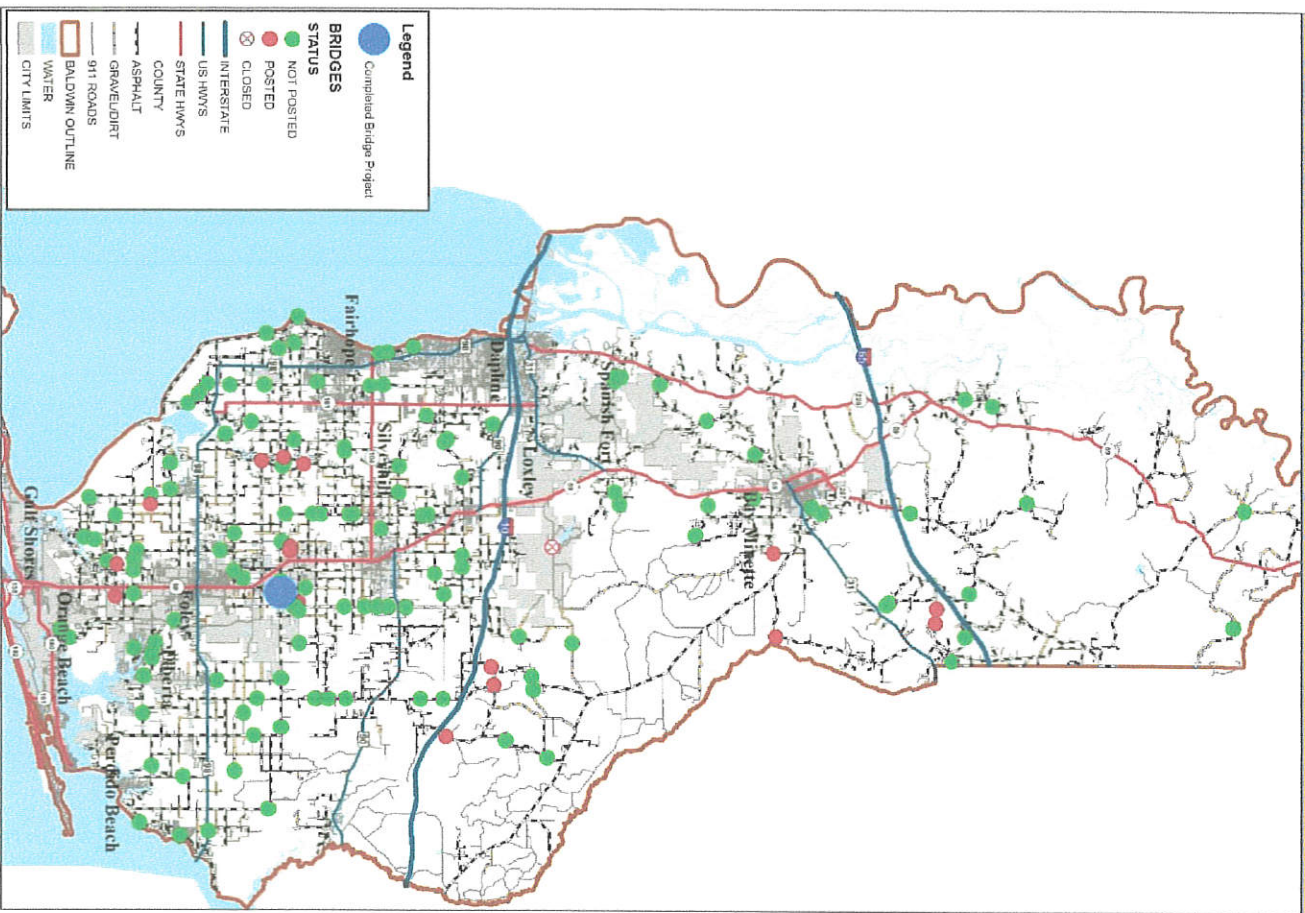
\*All costs are preliminary, unaudited project costs and include all labor, equipment, material, and contractor costs.

# Project Schedule

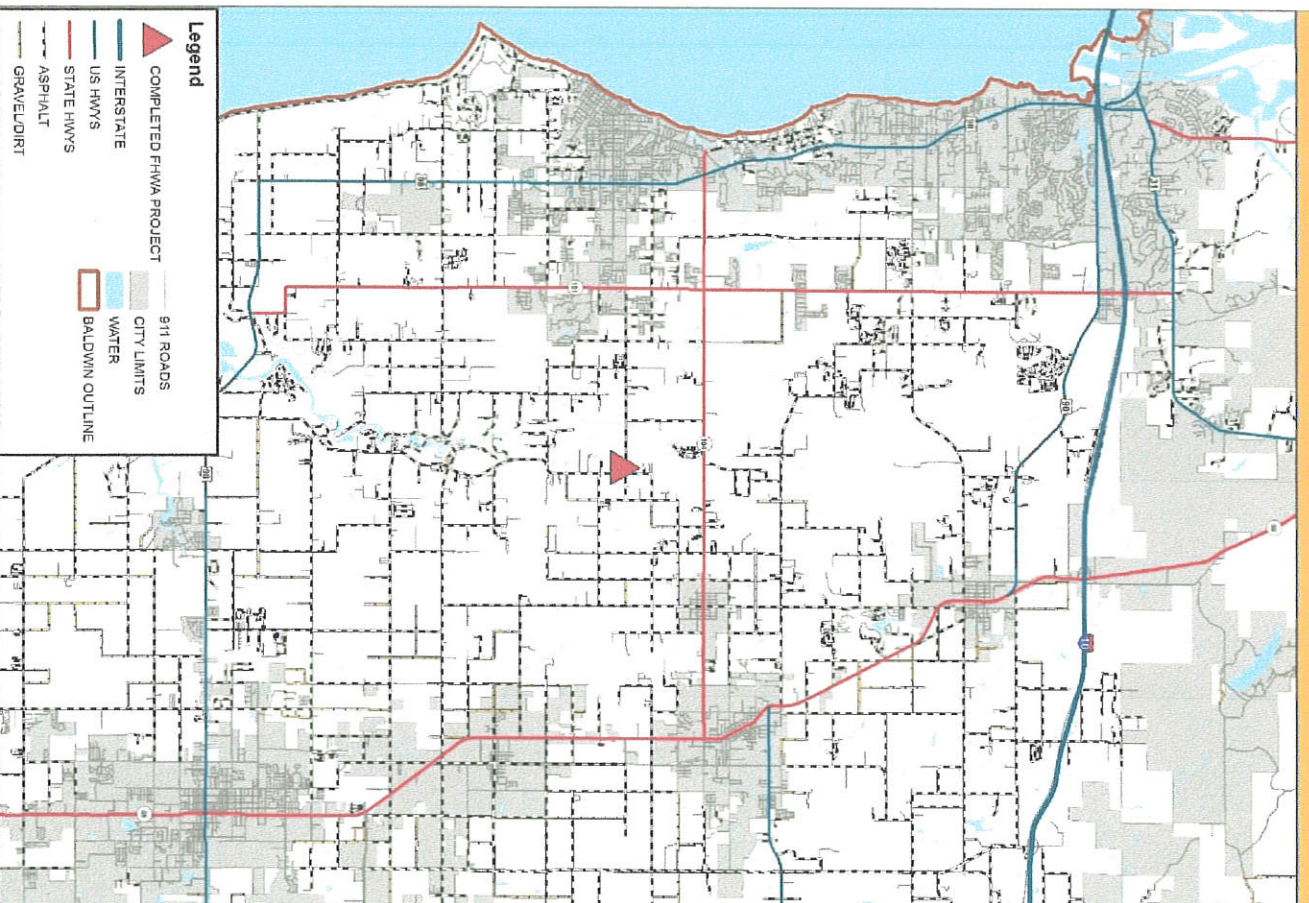
## Bridge Projects/Drainage Improvement

Project Number	Project Description	Project Width	Project Length	Total Cost*	Actual Start	Actual Complete	Target Start	Target Complete
Project Type 11 - Bridge Projects								
Area 100								
Area 100 Totals								
Area 200								
Area 200 Totals								
Area 300								
0215614	Bridge culvert & 3 cross drains on CR 32 over Unnamed Creek (FHWA)	-	-	\$ 162,340	3/7/2016	10/7/2016	3/1/2016	11/1/2016
0212809	Bridge replacement on CR 34 over Negro Creek (ATRIP)	22.00	0.13	344,521	2/29/2016		3/1/2016	4/1/2017
0206113	Bridge Replacement on Keller Rd over Boggy Branch (ATRIP)	22.00	0.06	65,360			3/14/2017	7/14/2017
0216014	Bridge Replacement on CR 9 Bridge over Polecat Creek (FHWA)	-	-	253,990			8/1/2017	8/1/2018
Area 300 Totals		0.19		826,211				
Totals for Project Type 11 - Bridge Projects		0.19		\$ 826,211				
Project Type 18 - Drainage Improvement								
Area 100								
Area 100 Totals								
Area 200								
0205316	Construct Retention Pond and Ditch adjacent to Lassiter Farm Rd	-	-	\$ 130,913	7/21/2016	10/17/2016	8/1/2016	10/21/2016
Area 200 Totals		-		130,913				
Area 300								
0205214	Drainage Improvements on Kenner Rd from John Hall Ln to EOM	-	-	3,979			4/1/2017	5/31/2017
Area 300 Totals		-		3,979				
County-wide Projects								
0215914	Drainage Improvements - Thompson Emergency Repair Sites (FHWA)	-	-	1,516,834	8/8/2016		8/15/2016	6/1/2017
County-wide Project Totals		-		1,516,834				
Totals for Project Type 18 - Drainage Improvement Projects		-		\$ 1,651,726				

\*All costs are preliminary, unaudited project costs and include all labor, equipment, material, and contractor costs.



Baldwin County Highway Department  
Q1 FY 2017 Completed Drainage Improvement Projects



# Completed Project

## Drainage/Flood Reduction– Area 200

### Project:

0205316 – Lassiter Farm Road

Construct Retention Pond and  
Ditch adjacent to Lassiter Farm  
Road

Actual Start Date

07/21/2016

Actual Complete Date

10/17/2016



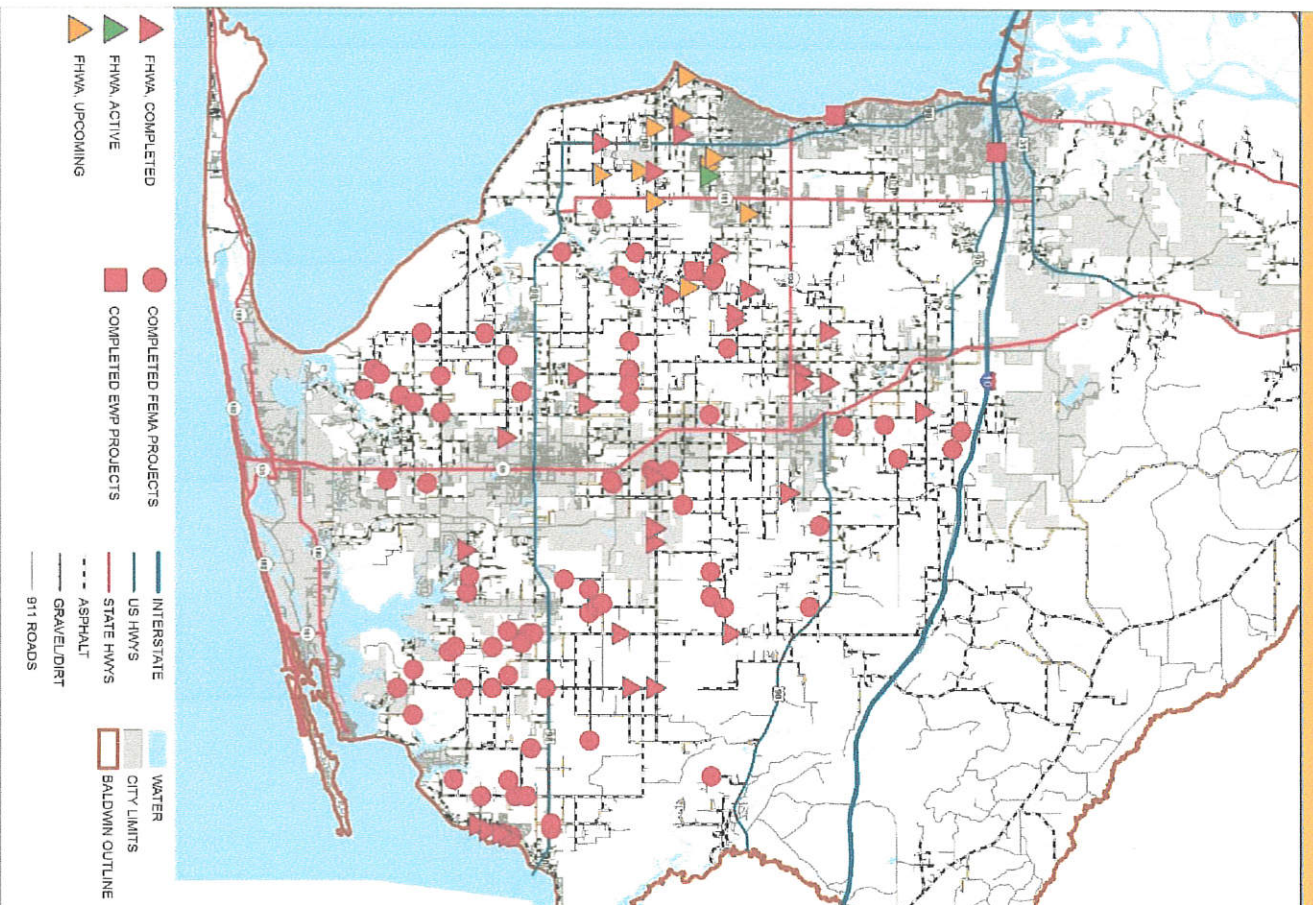
Before



After



Baldwin County Highway Department  
Drainage Improvement Projects Post April 2014 Rain Event



# In Progress Projects

## Drainage/Flood Reduction– Countywide

Project:

0215914 – Emergency Repair Sites

Actual Start Date

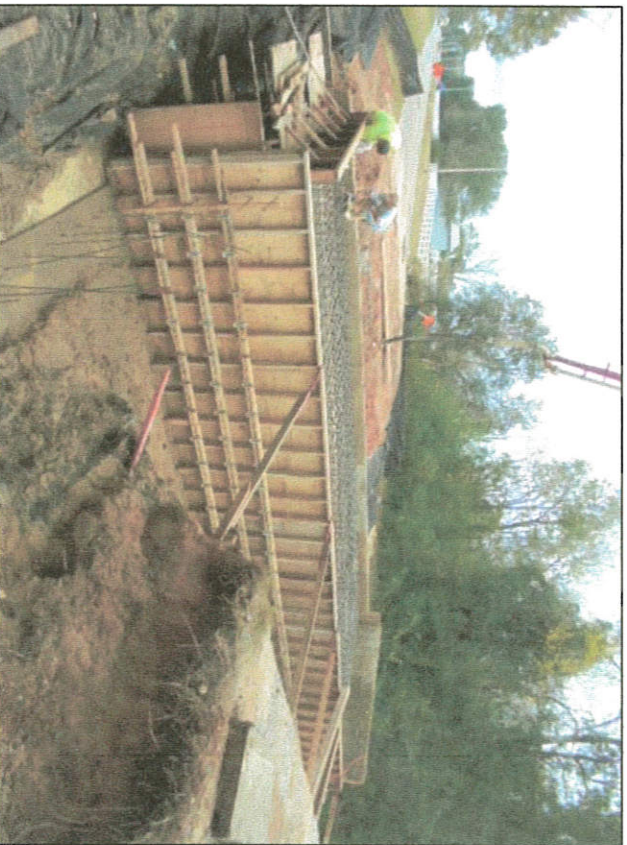
8/8/2016

Actual Complete Date

County Road 48 west of County Road 9



Before



During

# In Progress Projects

## Drainage/Flood Reduction– Countywide

### Project:

0215914 – Emergency Repair Sites

Actual Start Date

8/8/2016

Actual Complete Date

County Road 48 east of Blueberry Lane



Before



During

# In Progress Projects

## Drainage/Flood Reduction– Countywide

Project:

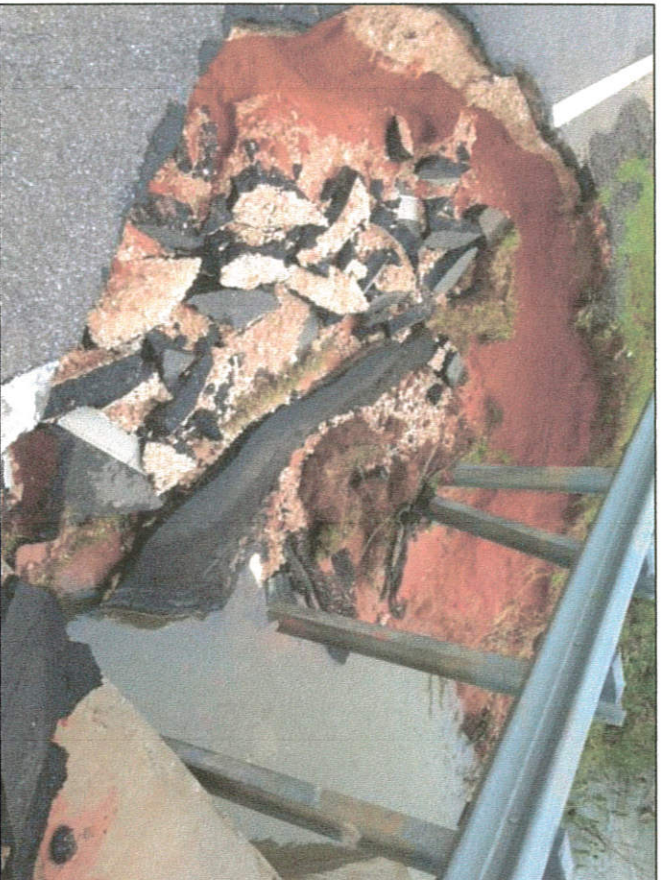
0215914 – Emergency Repair Sites

Actual Start Date

8/8/2016

Actual Complete Date

County Road 44



Before



During

# In Progress Projects

## Drainage/Flood Reduction– Countywide

Project:

0215914 – Emergency Repair Sites

Actual Start Date

8/8/2016

Actual Complete Date

County Road 44 east of County Road 13



Before



During

# In Progress Projects

## Drainage/Flood Reduction– Countywide

Project:

0215914 – Emergency Repair Sites

Actual Start Date

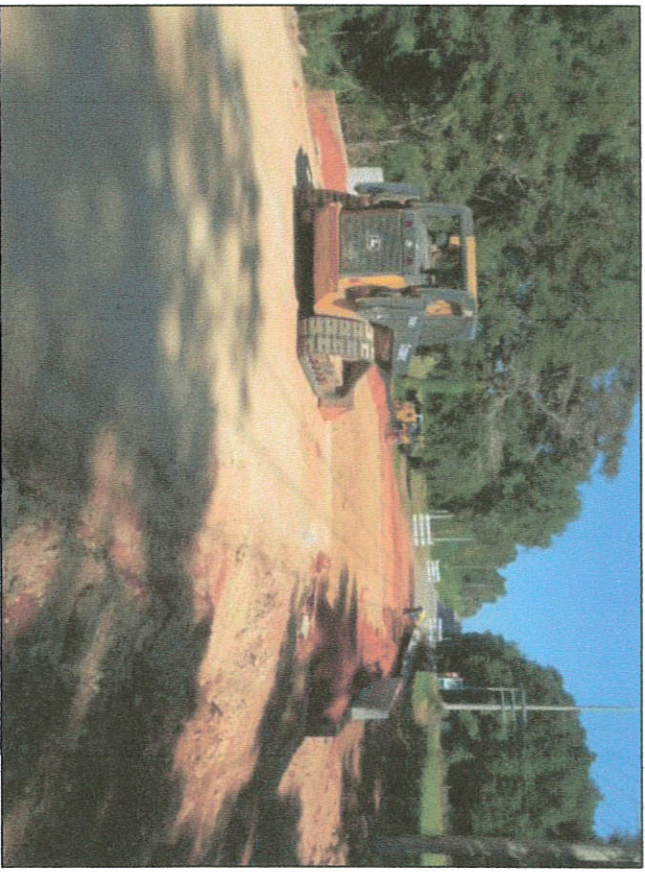
8/8/2016

Actual Complete Date

County Road 3



Before



During

# In Progress Projects

## Drainage/Flood Reduction– Countywide

Project:

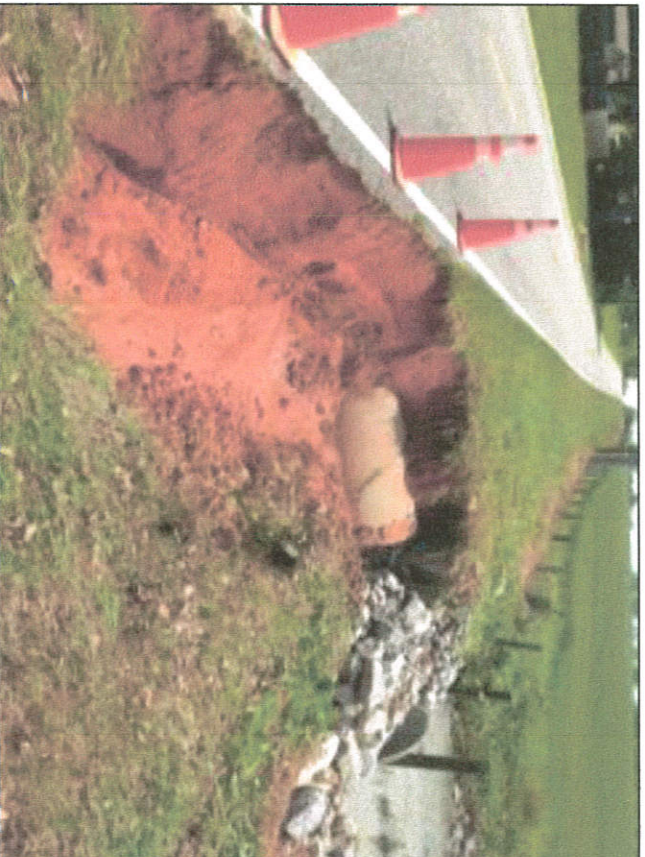
0215914 – Emergency Repair Sites

Actual Start Date

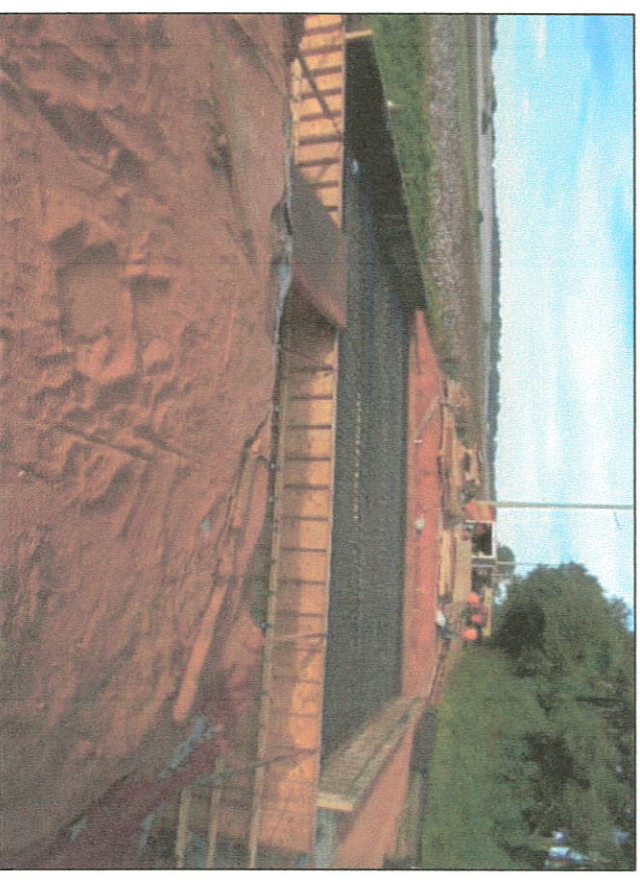
8/8/2016

Actual Complete Date

Old Battles Road west of Greeno Road



Before



During

# In Progress Projects

## Drainage/Flood Reduction– Countywide

Project:

0215914 – Emergency Repair Sites

Actual Start Date

8/8/2016

Actual Complete Date

County Road 32 east of County Road 13



Before



During

# In Progress Projects

## Drainage/Flood Reduction– Countywide

### Project:

0215914 – Emergency Repair Sites

Actual Start Date

8/8/2016

Actual Complete Date

County Road 24 west of Greeno Road



Before



During