



Appendix F

Pollution Prevention / Good Housekeeping

Baldwin County Employees with QCI Certification

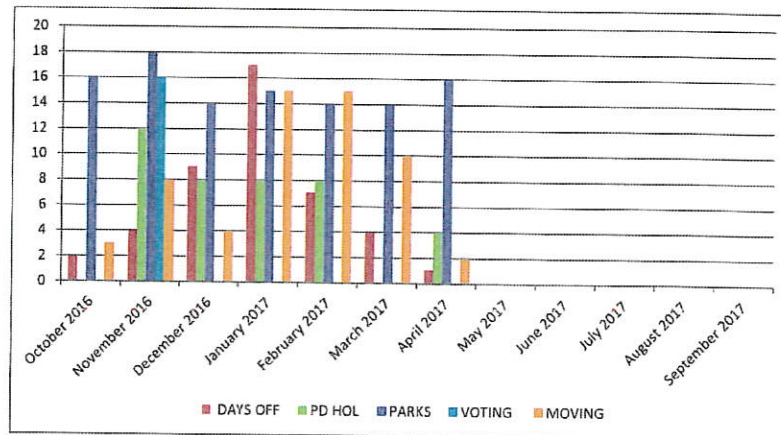
April 2016 – March 2017

- Allen, James	T5069
- Harville, Adam	T4152
- Holston, Michael	T4153
- Howell, Rodney	T4154
- Matthews, Jason	T4155
- Skipper, Hunter	T4156
- Warren, Charles	T4157
- White, Robert	T4158
- Younce, Joshua	T4159
- Thompson, Robert	T3268
- Gentry, Robert	T3264
- McWaters, Gabriel	T3265
- Meyer, William G.	T5070
- Propst, Douglas	T3266
- Nunnally, Joey	T4404
- King, Orie	T4581
- Lundy, Frank	31300
- Sharp, Mike	29814
- Mackey, Walter	40126

B.C.S.W. LITTER PATROL
ALL CREWS COMBINED
SPECIAL PROJECTS / TIME OFF

MONTH/YEAR		DAYS OFF	PD HOL	PARKS	VOTING	MOVING	WEIGHT	DAYS WORKED	MILES PICKED UP
October 2016		2	0	16	0	3	18020	47	185.7
November 2016		4	12	18	16	8	14780	13	122
December 2016		9	8	14	0	4	14220	39	143.8
January 2017		17	8	15	0	15	20300	17	164.5
February 2017		7	8	14	0	15	27500	20	111.2
March 2017		4	0	14	0	10	24000	44	181.8
April 2017		1	4	16	0	2	22160	41	146.4
May 2017		0	0	0	0	0	0	72	0
June 2017		0	0	0	0	0	0	72	0
July 2017		0	0	0	0	0	0	64	0
August 2017		0	0	0	0	0	0	76	0
September 2017		0	0	0	0	0	0	68	0
TOTALS		44	40	107	16	57	140980	573	1055.4

TIRES	
October 2016	34
November 2016	7
December 2016	15
January 2017	34
February 2017	31
March 2017	14
April 2017	
May 2017	
June 2017	
July 2017	
August 2017	
September 2017	
TOTALS	135



**B.C.S.W. LITTER PATROL
DISTRICT 1
SPECIAL PROJECTS / TIME OFF**

MONTH/ YEAR	DAYS OFF	PD HOL	GARBAGE RUN PARKS	VOTING	MOVING	WEIGHT	DAYS WORKED	MILES
Oct 16	0	0	4	0	1	4280	12	44.4
Nov 16	2	3	4	4	2	3080	3	22.2
Dec 16	1	2	4	0	2	3540	8	34.2
Jan 17	5	2	4	0	10	2080	-3	16.6
Feb 17	1	2	3	0	5	5540	5	23.9
Mar 17	1	0	3	0	6	4820	8	38.2
Apr 17	0	1	4	0	1	5740	10	33.2
May 17							18	
June 17							18	
July 17							16	
Aug 17							19	
Sept 17							17	
TOTALS	10	10	26	4	27	29080	131	212.7

8249

District 1

INMATE SUP Patrick C.

Assignment	
Monday	3-Oct (4)*NORTH END PARKS DEPT. GARBAGE RUN; then CONT.-Jack Spring Road.
Tuesday	4-Oct (3)CONTINUE:C.R.47 / Jack Springs Road-(47 to 61).
Wednesday	5-Oct (4)FINISH:C.R.47 / Jack Springs Rd; then ST.-C.R.61-(47 to 59).
Thursday	6-Oct (2)START:B.B.E.-S.(104 to 36).
Friday	7-Oct (0)*OFF / 4-10's.
TOTAL	

Miles	Weight
	0
	4
	4.8
	3.5
	0.00
	12.3
	820

Assignment	
Monday	10-Oct (3)*NORTH END PARKS DEPT. GARBAGE RUN; CONT.-C.R.61-(59 to 47).
Tuesday	11-Oct (3)CONTINUE:C.R.61-(47 to 59). *HEALTH FAIR.
Wednesday	12-Oct (3)CONTINUE:C.R.61-(47 to 59); START: Live Oak.
Thursday	13-Oct (3)FINISH:Live Oak; then START:D'olive Rd; or C.R.40-(138 to 225).
Friday	14-Oct (0)*OFF / 4-10's.
TOTAL	

Miles	Weight
	0
	3
	3.5
	3.5
	0.00
	10
	520

Assignment	
Monday	17-Oct (3)*NORTH END PARKS DEPT. GARBAGE RUN; then FINISH:C.R.40 / Live Oak Rd.
Tuesday	18-Oct (3)START:Bromley Road-(225 to Jimmy Faulkner Drive).
Wednesday	19-Oct (3)FINISH:Bromley Road-(J.F. Drive to 225); START:C.R.138-(225 to Bayminette C.L.)
Thursday	20-Oct (3)FINISH:C.R.138-(225 to B'minette C.L.).
Friday	21-Oct (0)*OFF / 4-10's.
TOTAL	

Miles	Weight
	0
	3
	3
	3.5
	0.00
	9.5
	1220

Assignment	
Monday	24-Oct (3)*NORTH END PARKS DEPT. GARBAGE RUN; then FINISH:Byrne's Lake Road.
Tuesday	25-Oct (4)FINISH:Byrne's Lake Road; then START:Nicholsville Road; and Old Daphne Hwy.
Wednesday	26-Oct (4)START:D'Olive Road-(225 to B'minette C.L.); then ST.-Cliff's Lndg. Rd. / C.R.7.
Thursday	27-Oct (4)FINISH:Cliff's Landing Rd; then START:Tall Pine Rd.
Friday	28-Oct (0)*OFF / 4-10's.
TOTAL	

Miles	Weight
	0
	3.8
	4.3
	4.5
	0.00
	12.6
	1720

Assignment	
Monday	31-Oct (4)*NORTH END PARKS DEPT. GARBAGE RUN; then CONT.-C.R.40.
Tuesday	1-Nov (0)*OFF / "SICK LEAVE".
Wednesday	2-Nov (2)*VOTING MACHINES.
Thursday	3-Nov (2)*VOTING MACHINES.
Friday	4-Nov (0)*OFF / 4-10's.
TOTAL	

Miles	Weight
	0
	0
	0
	0
	0.00
	0
	0
	400

Assignment	
------------	--

Monday	7-Nov (4)*NORTH END PARKS DEPT. GARBAGE RUN; then CONT.-C.R.40-(39 to 225).	0	0
Tuesday	8-Nov (3)FINISH:G/R; then START:C.R.40-(39 to 225).	1.6	340
Wednesday	9-Nov (2)*VOTING MACHINES.	0	0
Thursday	10-Nov (2)*VOTING MACHINES.	0	0
Friday	11-Nov (0)*OFF / HOLIDAY-"VETERANS DAY".	0.00	0
TOTAL		1.6	340
<u>Assignment</u>		<u>Miles</u>	<u>Weight</u>
Monday	14-Nov (2)*NORTH END PARKS DEPT. GARBAGE RUN; FINISH:C.R.40.	0	460
Tuesday	15-Nov (4)FINISH:C.R.40; then START:C.R.39-(31 to 40).	4	680
Wednesday	16-Nov (4)CONT. / FINISH:C.R.39-(31 to 40 / 138).	4.2	200
Thursday	17-Nov (4)*S.P./PROBATE B'MINETTE-MOVE OFFICE FURN; then FINISH:C.R.39.	0	0
Friday	18-Nov (0)*OFF / 4-10's.	0.00	0
TOTAL		8.2	1340
<u>Assignment</u>		<u>Miles</u>	<u>Weight</u>
Monday	21-Nov (3)*NORTH END PARKS DEPT. GARBAGE RUN.	0	0
Tuesday	22-Nov (4)FINISH:NORTH END G/R; TRUCK BROKE DOWN / HAD TO CHANGE OUT.	0	260
Wednesday	23-Nov (4)B.B.E.-(90 to 48).	2.5	140
Thursday	24-Nov (0)*OFF / HOLIDAY-"THANKSGIVING".	0	0
Friday	25-Nov (0)*OFF / HOLIDAY-"THANKSGIVING".	0.00	0
TOTAL		2.5	400
<u>Assignment</u>		<u>Miles</u>	<u>Weight</u>
Monday	28-Nov (0)*OFF / "ANNUAL LEAVE". *("PARKS DEPT." - TO HANDLE NORTH END G/R).	0	0
Tuesday	29-Nov (3)START:C.R.21 / Vaughn Road-(59 to 59 / Stockton).	3.2	0
Wednesday	30-Nov (3)FINISH:C.R.21, and Cannan circle; then ST.-C.R.80/Fort Mims Rd; & Union Town R.	3.7	300
Thursday	1-Dec (2)*S.P./PERSONNEL-MOVE BOXES TO ARCHIVES; then ST.-	3	300
Friday	2-Dec (0)*OFF / 4-10's.	0.00	0
TOTAL		9.9	600
<u>Assignment</u>		<u>Miles</u>	<u>Weight</u>
Monday	5-Dec (4)*NORTH END PARKS DEPT. GARBAGE RUN.	0	860
Tuesday	6-Dec (3)START:C.R.47-(I-65 to 94).	4.2	0
Wednesday	7-Dec (0)*OFF / "SICK LEAVE"; NEXT-C.R.57-(59 to Brady Rd.).	0	0
Thursday	8-Dec (4)*S.P./BAMINETTE C.H.; JUDGE TAYLOR-MOVE OFFICE FURN.	1	300
Friday	9-Dec (0)*OFF / 4-10's.	0.00	0
TOTAL		5.2	1160
<u>Assignment</u>		<u>Miles</u>	<u>Weight</u>
Monday	12-Dec (3)*NORTH END PARKS DEPT. GARBAGE RUN; CONT.-C.R.57-(59 to Brady Rd.).	0	300
Tuesday	13-Dec (3)FINISH:C.R.57-(59 to Brady Road).	4.2	0
Wednesday	14-Dec (3)START:Upper Bryant Landing Road / Vaughn-Stockton.	4	320
Thursday	15-Dec (4)START:St. Luke Church Road.	1	0
Friday	16-Dec (0)*OFF / 4-10's.	0.00	0
TOTAL		9.2	620
<u>Assignment</u>		<u>Miles</u>	<u>Weight</u>
Monday	19-Dec (0)*NO INMATES TO COLD / DID NORTH END PARKS DEPT. GARBAGE RUN.	0	0
Tuesday	20-Dec	3	280
Wednesday	21-Dec	3.1	340
Thursday	22-Dec	3	380
Friday	23-Dec (0)*OFF / "CHRISTMAS HOLIDAY".	0.00	0
TOTAL		9.1	1000
<u>Assignment</u>		<u>Miles</u>	<u>Weight</u>
Monday	26-Dec (0)*OFF / "CHRISTMAS HOLIDAY".	0	0
Tuesday	27-Dec (3)*NORTH END PARKS DEPT. GARBAGE RUN.	0	240
Wednesday	28-Dec (4)START:C.R.57 / Pinegrove Rd.-(59 to Brady Road).	3.8	0
Thursday	29-Dec (4)START:Bromley Road-(31 to 225).	3.5	360
Friday	30-Dec (4)FINISH:Bromley Road-(31 to 225).	3.40	160
TOTAL		10.7	760
<u>Assignment</u>		<u>Miles</u>	<u>Weight</u>
Monday	2-Jan (0)*NEW YEARS HOLIDAY.	0	0
Tuesday	3-Jan (4)*NORTH END PARKS DEPT. GARBAGE RUN.	0	360
Wednesday	4-Jan (3)START:Cemetery Road-(31 to 31); then ST.-C.R.47-(31 to R.R, tracks / I-65).	2	0
Thursday	5-Jan (4)START:C.R.47-(Perdido R/R tracks to I-65).	2	240
Friday	6-Jan (4)START:D'olive Road-(B'minette C.L. to beginning of County Maintenance.).	0.00	0
TOTAL		4	600
<u>Assignment</u>		<u>Miles</u>	<u>Weight</u>
Monday	9-Jan (4)*NORTH END PARKS DEPT. GARBAGE RUN.	0	400
Tuesday	10-Jan (0)*OFF / "SICK LEAVE".	0	0
Wednesday	11-Jan (4)START:Coleman Lane / Spanishfort; then ST.-C.R.61-(Perdido/47 to 47/Lottie).	3.6	280
Thursday	12-Jan (4)FINISH:C.R.61-(R/R Tracks/Perdido to 47); ST.-C.R.47-(I-65 to 47/Jack Springs Rd).	5	220
Friday	13-Jan (0)*OFF / 4-10's.	0.00	0
TOTAL		8.6	900
<u>Assignment</u>		<u>Miles</u>	<u>Weight</u>
Monday	16-Jan (0)*HOLIDAY / "MARTIN LUTHER KING - B."	0	0
Tuesday	17-Jan (3)*WASH TRAILER / S.P.-10AM-MOVE OFFICES FOR THE D.A.-ALL WEEK.	0	0
Wednesday	18-Jan (3)CONT.-*S.P./MOVING OFFICE FURNITURE FOR THE D.A. IN BAYMINETTE.	0	0
Thursday	19-Jan (4)CONT.-*S.P./MOVING OFFICE FURNITURE FOR THE D.A. IN BAYMINETTE.	0	0

Friday	20-Jan (4)CONT.-*S.P./MOVING OFFICE FURNITURE FOR THE D.A. IN BAYMINETTE.	0.00	0
TOTAL		0	0
<u>Assignment</u>		<u>Miles</u>	<u>Weight</u>
Monday	23-Jan (4)*CONTINUE THE D.A.'s OFFICE MOVE IN BAYMINETTE.	0	0
Tuesday	24-Jan (4)CONT.- *S.P./ MOVING OF THE D.A.'s OFFICES IN BALDWIN COUNTY.	0	0
Wednesday	25-Jan (2)CONT.- *S.P./ MOVING OF THE D.A.'s OFFICES IN BALDWIN COUNTY.	0	0
Thursday	26-Jan (4)CONT.- *S.P./ MOVING OF THE D.A.'s OFFICES IN BALDWIN COUNTY.	0	0
Friday	27-Jan (0)*OFF / 4-10's.	0.00	0
TOTAL		0	0
<u>Assignment</u>		<u>Miles</u>	<u>Weight</u>
Monday	30-Jan (3)*S.P./CONTINUING UP ON THE MOVE FOR THE D.A.'	0	0
Tuesday	31-Jan (3)*S.P./CONTINUING - MOVING D.A.'S OFFICE FURNITURE.	0	0
Wednesday	1-Feb (3)*S.P./FINISHING UP ON THE MOVE FOR THE D.A.'	0	0
Thursday	2-Feb		
Friday	3-Feb (0)*OFF / 4-10's.	0.00	0
TOTAL		0	0
<u>Assignment</u>		<u>Miles</u>	<u>Weight</u>
Monday	6-Feb (4)*ALL OF THE NORTH END PARKS DEPT. GARBAGE RUN.	0	340
Tuesday	7-Feb (4)START:Splinter Hill Road-(47 to Jack Springs Rd.).	2.6	0
Wednesday	8-Feb (4)FINISH:Splinter Hill Road; then ST.-C.R.47-(I-65 to Jack Springs Road).	4	552
Thursday	9-Feb (4)CONTINUE:C.R.47-(Jack Springs Rd. to I-65); then CONT.-Jack Springs Rd.-(47 to I-65)	3.5	320
Friday	10-Feb (0)*OFF / 4-10's.	0.00	0
TOTAL		10.1	1212
<u>Assignment</u>		<u>Miles</u>	<u>Weight</u>
Monday	13-Feb (0)*OFF / "SICK LEAVE";(4)- (M.B.)*G/R-ALL NORTH END FOR THE PARKS DEPT.	0	580
Tuesday	14-Feb (4)*S.P./CONT.-OFFICE FURNITURE MOVE FOR THE D.A.'s.	0	0
Wednesday	15-Feb (3)CONTINUE:C.R.47-(I-65 to 96); then START:Nicholsville Road.	4.1	1,580
Thursday	16-Feb (3)FINISH:C.R.47-(I-65 to 96); then ST.-C.R.86-(start at end by barcade and come out)	3.8	460
Friday	17-Feb (0)*OFF / 4-10's.	0.00	0
TOTAL		7.9	2620
<u>Assignment</u>		<u>Miles</u>	<u>Weight</u>
Monday	20-Feb (0)*OFF / "PRESIDENTS DAY".	0	0
Tuesday	21-Feb (3)*ALL OF THE NORTH END PARKS DEPT. GARBAGE RUN.	0	280
Wednesday	22-Feb (3)*S.P. / MOVE OFFICE FURN. FOR THE D.A.'s-BAYMINETTE.	0	0
Thursday	23-Feb (3)START:C.R.39-(40 to 31); then Tall Pine Road.	3.1	280
Friday	24-Feb (3)START:C.R.47 / Jack Springs Rd.-(47 to 61).	2.80	460
TOTAL		5.9	1020
<u>Assignment</u>		<u>Miles</u>	<u>Weight</u>
Monday	27-Feb (2)*ALL OF THE NORTH END PARKS DEPT. GARBAGE RUN.	0	680
Tuesday	28-Feb (0)*OFF / "MARDIS GRAS DAY".	0	0
Wednesday	1-Mar (3)*S.P./ANOTHER ASSIST WITH THE D.A./BAYMINETTE-R'DALE/FURNITURE.	0	0
Thursday	2-Mar (3)*S.P./PERSONNEL DEPT. OFFICE MOVE.	0	0
Friday	3-Mar (2)*S.P./FINISH: PERSONNEL DEPT. OFFICE MOVE; ST.-BOXES TRANSFER ACC'	0.00	0
TOTAL		0	680
<u>Assignment</u>		<u>Miles</u>	<u>Weight</u>
Monday	6-Mar (3)*S.P./CONTINUE-MOVING OF DOCUMENT BOXES FOR ACCTS. PAYABLE.	0	0
Tuesday	7-Mar (3)*S.P./CONTINUE-MOVING OF DOCUMENT BOXES FOR ACCTS. PAYABLE.	0	0
Wednesday	8-Mar (3)*S.P./MOVE OFFICES FROM BLDG. NEXT DOOR TO PERSONNEL TO OLD PER	0	0
Thursday	9-Mar (3)START:Cannan Road-(23 to 59).	2.8	440
Friday	10-Mar (0)*OFF / 4-10's.	0.00	0
TOTAL		2.8	440
<u>Assignment</u>		<u>Miles</u>	<u>Weight</u>
Monday	13-Mar (2)*NORTH END PARKS DEPT. GARBAGE RUN.	0	440
Tuesday	14-Mar (2)START:C.R.138-(225 to B'minette C.L.).	5.2	460
Wednesday	15-Mar (3)START:C.R.7 / Cliff's Landing Road; then ST.-Byrne's Lake Road.	4	320
Thursday	16-Mar (4)*S.P./ACCTS. PAYABLE 2 DESKS TO OAK ST. OFFICE; ST.-Pine Grove EXT.	3	900
Friday	17-Mar (0)*OFF / 4-10's.	0.00	0
TOTAL		12.2	2120
<u>Assignment</u>		<u>Miles</u>	<u>Weight</u>
Monday	20-Mar (4)*ALL OF THE NORTH END PARKS DEPT. GARBAGE RUN.	0	740
Tuesday	21-Mar (4)*S.P./FURNITURE MOVE - HARRY D'OLIVE-BMINETTE; CONT.-C.R.40-(225 to 35)	2	0
Wednesday	22-Mar (4)FINISH:C.R.40-(138 to 39 / 225).	4.5	320
Thursday	23-Mar (4)START:C.R.80 / Fort Mim's Road and Union Town Road also.	4.5	260
Friday	24-Mar (0)*OFF / 4-10's.	0.00	0
TOTAL		11	1320
<u>Assignment</u>		<u>Miles</u>	<u>Weight</u>
Monday	27-Mar (0)*OFF / "ANNUAL LEAVE".	0	0
Tuesday	28-Mar (3)START:Union Town Road; then ST.-Nicholsville Road.	2.7	320
Wednesday	29-Mar (4)START:C.R.61 / Phillipsville Road-(31 to 112).	5	620
Thursday	30-Mar (4)START:Danny Hall Road; then FINISH:C.R.61 / Phillipsville Rd.-(31 to 112).	4.5	0
Friday	31-Mar (0)*OFF / 4-10's.	0.00	0
TOTAL		12.2	940
<u>Assignment</u>		<u>Miles</u>	<u>Weight</u>
Monday	3-Apr (0)*ALL OF THE NORTH END PARKS DEPT. GARBAGE RUN.	0	1040

Tuesday	4-Apr (4)*D.A. / R'DALE - LOAD FURNITURE ON U-HAUL. FINISH:NORTH END G/R.
Wednesday	5-Apr (0)*NO INMATES TODAY BECAUSE OF WEATHER / CK. AREA/DISTRICT.
Thursday	6-Apr (4)START:C.R.61-(Perdido R/R track to The Wilderness Camp).
Friday	7-Apr (0)*OFF / 4-10's.
TOTAL	

0	0
0	0
4	440
0.00	0
4	1480

	Assignment
Monday	10-Apr (4)*ALL OF THE NORTH END PARKS DEPT. GARBAGE RUN.
Tuesday	11-Apr (4)FINISH:NORTH END G/R; then FINISH:C.R.61-(I-65 to Wilderness Camp).
Wednesday	12-Apr (4)START:C.R.21-(225 to 59); then also do - Robinson Road.
Thursday	13-Apr (4)START: Pine Grove Ext; and C.R.57-(59 to curve).
Friday	14-Apr (0)*HOLIDAY / "GOOD FRIDAY".
TOTAL	

Miles	Weight
0	160
1.5	0
3	500
2.2	320
0.00	0
6.7	980

	Assignment
Monday	17-Apr (4)*ALL OF THE NORTH END PARKS DEPT. GARBAGE RUN.
Tuesday	18-Apr (4)START:C.R.112-(31 to 61 / Phillipsville Road).
Wednesday	19-Apr (4)START:D'olive Rd.-(Bayminette C.L. to Tall Pine Road); then ST.-Jaycee Road.
Thursday	20-Apr (4)FINISH:C.R.23 / Vaughn Road; then ST.-C.R.47-(I-65 to Perdido R/R track.).
Friday	21-Apr (0)*OFF / 4-10's.
TOTAL	

Miles	Weight
0	800
4	340
4	500
3	160
0.00	0
11	1800

	Assignment
Monday	24-Apr (4)*ALL OF THE NORTH END PARKS DEPT. GARBAGE RUN.
Tuesday	25-Apr (3)CONTINUE:C.R.47 N./S. of I-65.
Wednesday	26-Apr (3)START:C.R.94-(47 to 59 / The Middle Part).
Thursday	27-Apr (3)START:Union Town Rd and Holly Creek Lndg; then ST.-C.R.80 / Boat Yard Lndg. Rc
Friday	28-Apr (0)*OFF / 4-10's.
TOTAL	

Miles	Weight
0	400
4	0
4.5	760
3	320
0.00	0
11.5	1480

B.C.S.W. LITTER PATROL
DISTRICT 2
SPECIAL PROJECTS / TIME OFF

MONTH/ YEAR	DAYS OFF	PD HOL	GARBAGE RUN PARKS	VOTING	MOVING	WEIGHT	DAYS WORKED	MILES
Oct 16	2	0	4	0	0	5240	11	37.2
Nov 16	1	3	4	4	2	3780	4	28.2
Dec 16	2	2	3	0	0	3060	12	29.9
Jan 17	6	2	3	0	0	5200	7	48.1
Feb 17	3	2	3	0	5	2580	3	20.1
Mar 17	2	0	4	0	2	5760	10	41
Apr 17	1	1	4	0	0	6380	10	33.6
May 17							18	
June 17							18	
July 17							16	
Aug 17							19	
Sept 17							17	
TOTALS	17	10	25	4	9	32000	145	238.1

District 2
INMATE SUF Troy C.

Assignment		Miles	Weight
Monday	3-Oct (4)*SOUTH WEST END PARKS DEPT. G/R; then ST.-C.R.55N-(32 to 34).	1.5	560
Tuesday	4-Oct (4)START:C.R.32W-(59 to 55N).	2.8	320
Wednesday	5-Oct (4)START:C.R.32E-(Bridge to 9 / 55N).	2.9	220
Thursday	6-Oct (0)*OFF / "SICK LEAVE". (4) *Mark B. to help on the Baldwin Beach Express.	3.5	0
Friday	7-Oct (0)*OFF / 4-10's.	0.00	0
TOTAL		10.7	1100
Assignment		Miles	Weight
Monday	10-Oct (4)*SOUTH WEST END PARKS DEPT. GARBAGE RUN; then START:C.R.49-(24 to 28).	0	960
Tuesday	11-Oct (3)START:C.R.9-(98 to 24); then START:C.R.49-(28 to 24). *HEALTH FAIR.	3.3	0
Wednesday	12-Oct (4)FINISH:C.R.49-(28 to 24); then FINISH:C.R.49-(24 to 98).	3.1	920
Thursday	13-Oct (4)FINISH:C.R.9-(24 to 32); then START:C.R.28-(9 to 55).	4	220
Friday	14-Oct (0)*OFF / 4-10's.	0.00	0
TOTAL		10.4	2100
Assignment		Miles	Weight
Monday	17-Oct (3)*SOUTH WEST END PARKS DEPT. GARBAGE RUN; then FINISH:C.R.9.	0	520
Tuesday	18-Oct (2)FINISH:C.R.9-(24 to 32); then ST.-C.R.28-(9 to 55).	4.3	0
Wednesday	19-Oct (3)FINISH:C.R.28-(59 to 9); then ST.-Long Road-(28 to 32).	3.7	220
Thursday	20-Oct (0)*OFF / "SICK LEAVE".	0	0
Friday	21-Oct (0)*OFF / 4-10's.	0.00	0
TOTAL		8	740
Assignment		Miles	Weight
Monday	24-Oct (3)*SOUTH WEST END PARKS DEPT. GARBAGE RUN; then ST.-C.R.24-(49 to 55 / 59).	0	500
Tuesday	25-Oct (3)START:Younce Road; then START:C.R.24W-(55 to 49 / 9).	4	0
Wednesday	26-Oct (3)FINISH:C.R.24-(9 to 49); then ST.-Bodenheimer Road.	1.1	400
Thursday	27-Oct (3)FINISH:Bodenhammer Rd; then START:C.R.55N-(34 to 48 / South Blvd.	3	400
Friday	28-Oct (0)*OFF / 4-10's.	0.00	0
TOTAL		8.1	1300
Assignment		Miles	Weight
Monday	31-Oct (3)*SOUTH WEST END PARKS DEPT. GARBAGE RUN; FINISH:C.R.24E-(55 to 65).	1.5	360
Tuesday	1-Nov (3)START:C.R.55N-(34 to South Blvd.).	4.5	400
Wednesday	2-Nov (2)*VOTING MACHINES.	0	0
Thursday	3-Nov (2)*VOTING MACHINES.	0	0
Friday	4-Nov (0)*OFF / 4-10's.	0.00	0
TOTAL		6	760
Assignment		Miles	Weight
Monday	7-Nov (0)*OFF / "SICK LEAVE".	0	0
Tuesday	8-Nov (4)START:C.R.49-(24 to 28).	1	0
Wednesday	9-Nov (2)*VOTING MACHINES.	0	0
Thursday	10-Nov (2)*VOTING MACHINES.	0	0

Friday 11-Nov (0)*OFF / HOLIDAY-"VETERANS DAY".
TOTAL

Assignment

Monday 14-Nov (3)*SOUTH WEST END PARKS DEPT. GARBAGE RUN; START:C.R.55-(98 to 32).
Tuesday 15-Nov (4)START:C.R.55-(98 to 32).
Wednesday 16-Nov (4)*S.P. / C.A.2-HWY DEPT./PLANNING AND ZONING-MOVE OFFICE FURN. CONT.55.
Thursday 17-Nov (4)FINISH:C.R.55-(28 to 32); then ST.-C.R.48-(181 to Langford Road).
Friday 18-Nov (0)*OFF / 4-10's.
TOTAL

Assignment

Monday 21-Nov (3)*SOUTH WEST END PARKS DEPT. GARBAGE RUN.
Tuesday 22-Nov (2)START:Foley Beach Express-(12 to 8).
Wednesday 23-Nov (2)B.B.E.-(90 to 48).
Thursday 24-Nov (0)*OFF / HOLIDAY-"THANKSGIVING".
Friday 25-Nov (0)*OFF / HOLIDAY-"THANKSGIVING".
TOTAL

Assignment

Monday 28-Nov (2)*SOUTH WEST END PARKS DEPT. GARBAGE RUN.
Tuesday 29-Nov (2)START:C.R.32-(59 to 55 / 9).
Wednesday 30-Nov (2)CONT.-C.R.32-(55 to 9 / 181 and 98).
Thursday 1-Dec (2)*S.P./MAG. LANDFILL-MOVE OUT COPY ROOM; then FINISH:C.R.32-(9 to 55).
Friday 2-Dec (0)*OFF / 4-10's.
TOTAL

Assignment

Monday 5-Dec (0)*OFF / "SICK LEAVE".
Tuesday 6-Dec (3)CONT.-C.R.32-(9 to 33 / 181).
Wednesday 7-Dec (4)START:C.R.33-(32 to 48); then ST.-C.R.48-(9 to 55).
Thursday 8-Dec (3)START:C.R.9-(48 to 32); then ST.-
Friday 9-Dec (0)*OFF / 4-10's.
TOTAL

Assignment

Monday 12-Dec (3)*SOUTH WEST END PARKS DEPT. GARBAGE RUN.
Tuesday 13-Dec (3)START:C.R.9-(32 to 24).
Wednesday 14-Dec (3)FINISH:C.R.9-(24 to 98); then ST.-C.R.55-(32 to 48 / South Blvd.).
Thursday 15-Dec (3)START:C.R.49-(24 to 98).
Friday 16-Dec (0)*OFF / 4-10's.
TOTAL

Assignment

Monday 19-Dec (0)*NO INMATES TO COLD / DID SOUTH WEST PARKS DEPT. GARBAGE RUN.
Tuesday 20-Dec
Wednesday 21-Dec
Thursday 22-Dec
Friday 23-Dec (0)*OFF / "CHRISTMAS HOLIDAY".
TOTAL

Assignment

Monday 26-Dec (0)*OFF / "CHRISTMAS HOLIDAY".
Tuesday 27-Dec (2)*SOUTH WEST END PARKS DEPT. GARBAGE RUN.
Wednesday 28-Dec (3)START:C.R.13-(24 to 98).
Thursday 29-Dec (3)FINISH:C.R.13-(24 to 32).
Friday 30-Dec (0)*OFF / "ANNUAL LEAVE".
TOTAL

Assignment

Monday 2-Jan (0)*NEW YEARS HOLIDAY.
Tuesday 3-Jan (3)*SOUTH WEST END PARKS DEPT. GARBAGE RUN.
Wednesday 4-Jan (3)START:C.R.55-(55 to 9).
Thursday 5-Jan (4)START:C.R.32-(98 to 181).
Friday 6-Jan (4)START:C.R.32-(181 to 98). WEATHER CONDITION - RAINY AND COLD.
TOTAL

Assignment

Monday 9-Jan (0)*OFF / "SICK LEAVE".
Tuesday 10-Jan (3)START:C.R.32-(59 to 55); and C.R.32-(33 to 9).
Wednesday 11-Jan (2)START:C.R.32-(9 to 33); then ST.-C.R.49-(28 to 24).
Thursday 12-Jan (3)START:
Friday 13-Jan (0)*OFF / 4-10's.
TOTAL

Assignment

Monday 16-Jan (0)*HOLIDAY / "MARTIN LUTHER KING - B."
Tuesday 17-Jan (2)*NORTH END PARKS DEPT. GARBAGE RUN.
Wednesday 18-Jan (3)START:C.R.48-(Langford Rd. to Bohemian Hall Rd.); South Blvd; C.R.48-(55 to 9).
Thursday 19-Jan (2)FINISH:C.R.48-(Langford Rd. to Bohemian Hall Rd.); then ST.-Bohemian Hall Rd.
Friday 20-Jan (0)*OFF / "SICK LEAVE". (2)*M.B.-FINISH:B.H. Road; ST.-South Blvd; Sedlack. 49-9/55.
TOTAL

Assignment

Monday 23-Jan (2)*NORTH END PARKS DEPT. GARBAGE RUN.
Tuesday 24-Jan (3)START:C.R.28-(9 to 55).
Wednesday 25-Jan (4)*OFF / "ANNUAL LEAVE". *(M.B.)-START: C.R.112W-(64 to 61). Mm16 - mm12.
Thursday 26-Jan (4)*OFF / "ANNUAL LEAVE". *(M.B.)-START: C.R.112W-(64 to 61). Mm12 - mm8.
Friday 27-Jan (0)*OFF / 4-10's.

0.00 0
1 0

Miles	Weight	
0		440
3.5		300
2.1		0
3.2		460
0.00		0
8.8		1200

Miles	Weight	
0		380
1.5		0
2.5		0
0		0
0.00		0
4		380

Miles	Weight	
0		920
3		220
2.6		0
2.8		300
0.00		0
8.4		1440

Miles	Weight	
0		0
4		0
4		400
3.3		480
0.00		0
11.3		880

Miles	Weight	
0		540
2.8		0
4.2		420
2.5		0
0.00		0
9.5		960

Miles	Weight	
0		0
0		0
3		0
2.6		500
0.00		0
5.6		500

Miles	Weight	
0		0
0		440
1.5		0
2		280
0.00		0
3.5		720

Miles	Weight	
0		0
0		440
2.5		0
2.2		0
2.00		0
6.7		440

Miles	Weight	
0		0
3.5		0
3.5		480
2		120
0.00		0
9		600

Miles	Weight	
0		0
0		480
2.5		0
2.2		0
2.30		360
7		840

Miles	Weight	
0		280
4.5		0
4.4		360
4.1		480
0.00		0

TOTAL	
<u>Assignment</u>	
Monday	30-Jan (0)*OFF / "ANNUAL LEAVE". (2)*G/R - NORTH END PARKS DEPT. GARBAGE RUN.
Tuesday	31-Jan (0)*OFF / "ANNUAL LEAVE". (4)CONT.-C.R.112-(mm8 to mm4/4.0 miles).
Wednesday	1-Feb (0)*OFF / "ANNUAL LEAVE". (4)CONT.-C.R.112-(mm4 to mm1/Hwy 31 - 4.0 miles).
Thursday	2-Feb (0)*OFF / "ANNUAL LEAVE". (4)START:MarryAnn Nelson Rd.-(98 to C.R.1).
Friday	3-Feb (0)*OFF / 4-10's.
TOTAL	

<u>Assignment</u>	
Monday	6-Feb (3)*S.P./MOVE OFFICE FURNITURE FOR B.R.A.T.S.-Foley Sat. C.H. to Old Foley Barn.
Tuesday	7-Feb (4)CONTINUE:C.R.9-(98 to 32); then ST.-C.R.9-(32 to 48).
Wednesday	8-Feb (4)FINISH:C.R.9-(98 to 32); then ST.-C.R.9-(32 to 48).
Thursday	9-Feb (3)START:C.R.24-(55 to 59).
Friday	10-Feb (0)*OFF / 4-10's.
TOTAL	

<u>Assignment</u>	
Monday	13-Feb (0)*OFF / "SICK LEAVE".
Tuesday	14-Feb (3)CONTINUE:C.R.24-(55 to 59).
Wednesday	15-Feb (3)*S.P./HEALTH DEPT. MOVE IN BAYMINETTE TO R'DALE.
Thursday	16-Feb (4)*S.P./HEALTH DEPT. MOVE IN BAYMINETTE TO R'DALE.

13		1120
<u>Miles</u>	<u>Weight</u>	
0		480
4		380
4		
0.00		0
8		860
<u>Miles</u>	<u>Weight</u>	
1		0
2.9		0
1.5		380
3.8		280
0.00		0
9.2		660
<u>Miles</u>	<u>Weight</u>	
0		0
4.5		540
0		0
0		0

Friday	17-Feb (0)*OFF / 4-10's.
TOTAL	
<u>Assignment</u>	
Monday	20-Feb (0)*OFF / "PRESIDENTS DAY".
Tuesday	21-Feb (4)*S.P./CONTINUE-HEALTH DEPT. MOVE.
Wednesday	22-Feb (4)START:C.R.55-(South Blvd./S'hill C.L. to 48 / 32).
Thursday	23-Feb (4)*S.P./BRATS-REFRIGERATOR AND DESK BRING DOWN FROM B'MINETTE. C.R.55.
Friday	24-Feb (4)FINISH:C.R.55-(48 to 32).
TOTAL	
<u>Assignment</u>	
Monday	27-Feb (3)*SOUTH WEST END PARKS DEPT. GARBAGE RUN.
Tuesday	28-Feb (0)*OFF / "MARDIS GRAS DAY".
Wednesday	1-Mar (3)FINISH:SOUTH WEST END PARKS DEPT. GARBAGE RUN, POINT CLEAR AREA.
Thursday	2-Mar (3)START:Rada Rd; FINISH:C.R.55; then ST.-C.R.49-(28 to 24).
Friday	3-Mar (2)*S.P./ASSIST WITH CONF. TABLE MOVE. CONT.:C.R.49-(28 to 24).
TOTAL	
<u>Assignment</u>	
Monday	6-Mar (2)*ALL OF THE NORTH END PARKS DEPT. GARBAGE RUN.
Tuesday	7-Mar (2)START:F.B.E.-(8 TO 12 / 1.3 miles); then ST.-B.B.E.-(F.B.E. to 34).
Wednesday	8-Mar (2)CONT.-B.B.E.-(34 to 90).
Thursday	9-Mar (3)*OFF / "SICK LEAVE". (M.B.) - FINISH:B.B.E.-(90 to I-10).
Friday	10-Mar (0)*OFF / 4-10's.
TOTAL	
<u>Assignment</u>	
Monday	13-Mar (3)*ALL SOUTH WEST END PARKS DEPT. GARBAGE RUN.
Tuesday	14-Mar (2)START:Manich Ln.-(9 to 17); then ST.-C.R.3-(44 to 32).
Wednesday	15-Mar (4)START:Manich Lane-(9 to 17); then CONT.-C.R.49-(28 to 24).
Thursday	16-Mar (4)FINISH:C.R.49-(28 to 24); then ST.-
Friday	17-Mar (0)*OFF / 4-10's.
TOTAL	
<u>Assignment</u>	
Monday	20-Mar (3)*SOUTH WEST END PARKS DEPT. GARBAGE RUN.
Tuesday	21-Mar (3)START:C.R.32-(scenic 98 to 98 / 181).
Wednesday	22-Mar (2)*OFF / "ANNUAL LEAVE". (M.B.) - START:C.R.61-(31 to 112).
Thursday	23-Mar (2)CONT.-C.R.32-(181 to 9 / 55N).
Friday	24-Mar (0)*OFF / 4-10's.
TOTAL	
<u>Assignment</u>	
Monday	27-Mar (2)*ALL OF THE NORTH PARKS DEPT. GARBAGE RUN.
Tuesday	28-Mar (3)CONTINUE:C.R.32E-(9 to 55 / 59).
Wednesday	29-Mar (3)*S.P./BLDG. INSP. DEPT.-F'HOPE C.H.-Move 6 filing cabinets. FINISH:C.R.32-(9/55).
Thursday	30-Mar (4)FINISH:C.R.32-(9 to 55); then START:
Friday	31-Mar (0)*OFF / 4-10's.
TOTAL	
<u>Assignment</u>	
Monday	3-Apr (0)*ALL OF THE SOUTH WEST END PARKS DEPT. GARBAGE RUN.
Tuesday	4-Apr (3)*FINISH: PARKS DEPT. GARBAGE RUN FOR SOUTH WEST END. CONT.-C.R.32.
Wednesday	5-Apr (0)*NO INMATES TODAY BECAUSE OF WEATHER / CK. AREA/DISTRICT.
Thursday	6-Apr (3)CONT.-C.R.55-(24 to 28 / 32).
Friday	7-Apr (0)*OFF / 4-10's.
TOTAL	
<u>Assignment</u>	
Monday	10-Apr (3)*SOUTH WEST END PARKS DEPT. GARBAGE RUN.
Tuesday	11-Apr (3)START:C.R.55-(S'hill C.L./South Blvd. to 34).
Wednesday	12-Apr (3)START:C.R.34-(55 to 59).
Thursday	13-Apr (3)FINISH:C.R.34-(55 to 59); then FINISH:C.R.55-(34 to 32).
Friday	14-Apr (0)*HOLIDAY / "GOOD FRIDAY".
TOTAL	
<u>Assignment</u>	
Monday	17-Apr (4)*SOUTH WEST END PARKS DEPT. GARBAGE RUN.
Tuesday	18-Apr (4)START:C.R.9-(Trailer park in curve to 32). NEXT - C.R.33-(32 to 48).
Wednesday	19-Apr (4)*OFF / "SICK LEAVE". (M.B.) *B.B.E.-(90 to 64 / I-10).
Thursday	20-Apr (4)FINISH:C.R.33-(32 to 48); then ST.-C.R.9-(32 to 28).
Friday	21-Apr (0)*OFF / 4-10's.
TOTAL	
<u>Assignment</u>	
Monday	24-Apr (4)*ALL OF THE SOUTH EAST END PARKS DEPT. GARBAGE RUN.
Tuesday	25-Apr (4)START:C.R.28-(9 to 49); then ST.-C.R.49-(28 to 24).
Wednesday	26-Apr (4)START:C.R.49-(28 to 24 / 98).
Thursday	27-Apr (4)FINISH:C.R.49-(24 to 98); then ST.-C.R.24-(49 to 55).
Friday	28-Apr (0)*OFF / 4-10's.
TOTAL	

0.00	0
4.5	540
Miles	Weight
0	0
0	0
1.5	0
0	0
1.50	160
3	160
Miles	Weight
0	760
0	0
1.5	0
1.6	460
0.30	0
3.4	1220
Miles	Weight
0	580
4.5	0
5.3	300
5	660
0.00	0
14.8	1540
Miles	Weight
0	820
2	0
2.5	360
2	420
0.00	0
6.5	1600
Miles	Weight
0	620
4	0
4	520
3.8	320
0.00	0
11.8	1460
Miles	Weight
0	240
3	0
2.9	620
2	300
0.00	0
7.9	1160
Miles	Weight
0	0
0	1,360
0	0
2.5	460
0.00	0
2.5	1820
Miles	Weight
0	580
3	0
2.5	0
2.5	700
0.00	0
8	1280
Miles	Weight
0	800
5	0
4.6	1,000
3	0
0.00	0
12.6	1800
Miles	Weight
0	640
4.4	280
3	300
3.1	260
0.00	0
10.5	1480

B.C.S.W. LITTER PATROL
DISTRICT 3
SPECIAL PROJECTS / TIME OFF

MONTH/ YEAR	DAYS OFF	PD HOL	GARBAGE RUN PARKS	VOTING	MOVING	WEIGHT	DAYS WORKED	MILES
Oct 16	0	0	4	0	2	4000	11	55.7
Nov 16	1	3	5	4	4	2920	1	39
Dec 16	2	2	4	0	2	3400	9	40.2
Jan 17	2	2	4	0	5	5480	5	43
Feb 17	1	2	4	0	5	14420	4	30.2
Mar 17	1	0	3	0	2	7240	12	52.1
Apr 17	0	1	4	0	1	4100	10	37.8
May 17							18	
June 17							18	
July 17							16	
Aug 17							19	
Sept 17							17	
TOTALS	7	10	28	4	21	41560	140	298

41240

District 3 INMATE SUP Joe D.		Assignment		Miles	Weight
Monday	3-Oct (4)*CK.-Sibley St; Seminole Boat Ramp; and Styx River Bridge. ST.-C.R.65N-(64 to end);			1.2	0
Tuesday	4-Oct (3)START:C.R.65N-(68 to end); then Fox Branch Rd; and Loper Road.			3.7	240
Wednesday	5-Oct (4)START:C.R.64N-(B.B.E. to I-10); and C.R.68N of the B.B.E.			6.5	220
Thursday	6-Oct (4)START:B.B.E.-N.(Foley Beach Exp. To 34).			5.5	100
Friday	7-Oct (0)*OFF / 4-10's.			0.00	0
TOTAL				16.9	560
		Assignment		Miles	Weight
Monday	10-Oct (4)*CK.-Seminole Boat Ramp; and Styx River Bridge; *S.P.-B.C.O.A. and E.M.A./furn.			0	0
Tuesday	11-Oct (4)*S.P. - B.C.O.A. / Move Office Furniture; CONTINUE:C.R.64-(B.B.E./83 to I-10). *H.F.			2	500
Wednesday	12-Oct (4)FINISH:C.R.64-(83 / B.B.E. to I-10 / 112). *S.P. / TD- TABLES, CHAIRS-HEALTH FAI			4.5	0
Thursday	13-Oct (4)CONTINUE:C.R.64N-(I-10 to 112).			5	440
Friday	14-Oct (0)*OFF / 4-10's.			0.00	0
TOTAL				11.5	940
		Assignment		Miles	Weight
Monday	17-Oct (4)*CK.-Seminole Boat Ramp; and Styx River Bridge. START:C.R.64W-(B.B.E. to 55).			0	80

Tuesday	18-Oct (4)*S.P./Planning and Zonning-8AM-deliver book shelf. CONT.-C.R.64-(1-10 to 112).	2.2	780
Wednesday	19-Oct (4)FINISH:C.R.64-(55 to B.B.E.).	4.5	0
Thursday	20-Oct (4)FINISH:C.R.87-(90 to 38); then ST.-C.R.38.	4.4	320
Friday	21-Oct (0)*OFF / 4-10's.	0.00	0
TOTAL		11.1	1180
<u>Assignment</u>			
Monday	24-Oct (4)*CK.-Seminole Boat Ramp, and Styx River Bridge; CONT:C.R.38W-(87 to B.B.E.).	1.7	600
Tuesday	25-Oct (4)FINISH:C.R.38W-(87 to B.B.E.); then START:C.R.64E-(54 to 66).	5.2	500
Wednesday	26-Oct (4)START:Woodpecker Rd; Hill Rd;ST.-C.R.52-(55 to R'dale C.L.).	4.2	0
Thursday	27-Oct (4)START:C.R.55N-(52 to 59).	5.1	220
Friday	28-Oct (0)*OFF / 4-10's.	0.00	0
TOTAL		16.2	1320
<u>Assignment</u>			
Monday	31-Oct (4)*CK.-Sinley St; Styx River Bridge; Seminole Boat Ramp. C.R.71, and 87 parts of.	1	420
Tuesday	1-Nov (4)*S.P. / 8AM-Reset tables and chairs in C.A. 1 Auditorium; START:C.R.112-(87 to 64).	3.8	340
Wednesday	2-Nov (2)*VOTING MACHINES.	0	0
Thursday	3-Nov (2)*VOTING MACHINES.	0	0
Friday	4-Nov (0)*OFF / 4-10's.	0.00	0
TOTAL		4.8	760
<u>Assignment</u>			
Monday	7-Nov (3)*SOUTH WEST END G/R; CK.- Styx River Bridge; and Seminole Boat Ramp.	0	440
Tuesday	8-Nov (3)START:Rawls Road-(56 to 59); then ST.-	1	0
Wednesday	9-Nov (2)*VOTING MACHINES.	0	0
Thursday	10-Nov (2)*VOTING MACHINES.	0	0
Friday	11-Nov (0)*OFF / HOLIDAY-"VETERANS DAY".	0.00	0
TOTAL		1	440
<u>Assignment</u>			
Monday	14-Nov (3)*CK.-Sibley St; Styx River Bridge; Seminole Boat Ramp. ST.-Patterson Road.	3	340
Tuesday	15-Nov (3)FINISH:Patterson Road; then ST.-Cow Pen Road.	3.5	340
Wednesday	16-Nov (2)*OFF / "ANNUAL LEAVE". / *M.B. TO HANDLE-B.B.E.-(90 to F.B.E.).	4.5	240
Thursday	17-Nov (3)START:Cow Pen Road-(Patterson Rd. to 87).	4.2	0
Friday	18-Nov (0)*OFF / 4-10's.	0.00	0
TOTAL		15.2	920
<u>Assignment</u>			
Monday	21-Nov (2)*CK.-Sibley St; Styx River Bridge, and Seminole Boat Ramp.	0	320
Tuesday	22-Nov (2)START:Foley Beach Express-(12 to 8); CK'D	2	0
Wednesday	23-Nov (2)B.B.E.-(F.B.E. to 48).	4	0
Thursday	24-Nov (0)*OFF / HOLIDAY-"THANKSGIVING".	0	0
Friday	25-Nov (0)*OFF / HOLIDAY-"THANKSGIVING".	0.00	0
TOTAL		6	320
<u>Assignment</u>			
Monday	28-Nov (3)*CK.-Sibley St; Styx River Bridge; and Seminole Boat Ramp. ST.-B.B.E.-(1-10 to 64).	1.5	200
Tuesday	29-Nov (2)START:C.R.54-(64 to 55).	3.5	0
Wednesday	30-Nov (2)*S.P./C.A.1-AUDITORIUM-Reset tables and chairs. CONT.-:C.R.54-(55 to 64).	1	280
Thursday	1-Dec (2)FINISH:C.R.54-(64 to 55).	6	0
Friday	2-Dec (0)*OFF / 4-10's.	0.00	0
TOTAL		12	480
<u>Assignment</u>			
Monday	5-Dec (4)*SOUTH WEST END PARKS DEPT. G/R; Seminole Boat Ramp; Styx River Bridge.	0	600
Tuesday	6-Dec (4)START:C.R.56-(55 to 59); then ST.-	4.9	400
Wednesday	7-Dec (4)START:C.R.64-(181 to 49 / Loxley C.L.).	5.5	520
Thursday	8-Dec (4)START:C.R.64-(54 to 181); then ST.-	4.5	0
Friday	9-Dec (0)*OFF / 4-10's.	0.00	0
TOTAL		14.9	1520
<u>Assignment</u>			
Monday	12-Dec (4)*CK.-Sibley St; Styx River Bridge; Seminole Boat Ramp; ST.-C.R.55-(59/Barlow Rd.).	2.5	380
Tuesday	13-Dec (4)CONT.-C.R.64-(112 to Jerngan Rd.).	2	240
Wednesday	14-Dec (4)*OFF / "ANNUAL LEAVE".* (M.B.)-B.B.E.-(64 to 90), and B.B.E.-(32 to F.B.E.).	4.7	440
Thursday	15-Dec (4)START:Boggy Lane and C.C. Road.	2	0
Friday	16-Dec (0)*OFF / 4-10's.	0.00	0
TOTAL		11.2	1060
<u>Assignment</u>			
Monday	19-Dec (0)*NO INMATES TO COLD / DID HIS PART OF THE PARKS DEPT. GARBAGE RUN.	0	0
Tuesday	20-Dec	0	0
Wednesday	21-Dec	3	160
Thursday	22-Dec	3.5	0
Friday	23-Dec (0)*OFF / "CHRISTMAS HOLIDAY".	0.00	0
TOTAL		6.5	160
<u>Assignment</u>			
Monday	26-Dec (0)*OFF / "CHRISTMAS HOLIDAY".	0	0
Tuesday	27-Dec (4)*S.P./MOVE OFFICE FURN. FOR JUDGE S.-FOLEY TO BAYMINETTE.	0	0
Wednesday	28-Dec (4)*S.P./MOVE OFFICE FURN. FOR JUDGE S.-FOLEY TO BAYMINETTE / FINISH.	0	0
Thursday	29-Dec (4)START:C.R.112-(64 to 87).	3.8	320
Friday	30-Dec (4)CONTINUE:C.R.112-(M.M.30 to M.M.26).	3.80	340
TOTAL		7.6	660
<u>Assignment</u>			
		Miles	Weight

Monday	2-Jan (0)*NEW YEARS HOLIDAY.	0	0
Tuesday	3-Jan (3)*CK.-SIBLEY ST; STYX RIVER BRIDGE; AND SEMINOLE BOAT RAMP.	0	0
Wednesday	4-Jan (0)*OFF / "ANNUAL LEAVE".	0	0
Thursday	5-Jan (3)*S.P./C.A.1-TO B'MINEETE/7 BOXES AND A SCANNER; then ST.-	0	0
Friday	6-Jan (3)Pick up sections of C.R.64 and 55.	0.00	0
TOTAL		0	0
<u>Assignment</u>		<u>Miles</u>	<u>Weight</u>
Monday	9-Jan (3)*OFF / "SICK LEAVE". (M.B.)-G/R: SOUTH EAST END, FoleyCH; Seminole Boat Rmp	0	460
Tuesday	10-Jan (3)*S.P./C.A.1-MOVE A DESK; then START:C.R.64-(49 to 54).	3.5	0
Wednesday	11-Jan (3)START:C.R.64-(49 to 66); then ST.-C.R.55-(59 to 56).	4	760
Thursday	12-Jan (3)FINISH:C.R.55-(56 to 52); then ST.-	6	0
Friday	13-Jan (0)*OFF / 4-10's.	0.00	0
TOTAL		13.5	1220
<u>Assignment</u>		<u>Miles</u>	<u>Weight</u>
Monday	16-Jan (0)*HOLIDAY / "MARTIN LUTHER KING - B."	0	0
Tuesday	17-Jan (3)*SOUTH WEST END PARKS DEPT. GARBAGE RUN.	0	580
Wednesday	18-Jan (3)START:C.R.64-(55/Loxley C.L. to 83/B.B.E.); then ST.-C.R.64-(B.B.E./83 to I-10/112).	3.5	360
Friday	20-Jan (4)FINISH:C.R.56-(59 to 55); then START:C.R.49-(104 to 54).	4.50	0
TOTAL		11	1100
<u>Assignment</u>		<u>Miles</u>	<u>Weight</u>
Monday	23-Jan (4)*ALL SOUTH WEST END PARKS DEPT. GARBAGE RUN.	0	860
Tuesday	24-Jan (3)CONT.-C.R.49-(School to Fackler Road); ST.-C.R.49-(59 to 59); and ST.-C.R.64-(55/I	5.2	0
Wednesday	25-Jan (4)CONT.-C.R.64-(65 to 83/B.B.E.).	3.8	880
Thursday	26-Jan (4)START:Young St; New Era Road, and Kirkman Lane.CONT.-C.R.64-(B.B.E. to I-10/1	4.8	300
Friday	27-Jan (0)*OFF / 4-10's.	0.00	0
TOTAL		13.8	2040
<u>Assignment</u>		<u>Miles</u>	<u>Weight</u>
Monday	30-Jan (4)*ALL OF THE SOUTH WEST END PARKS DEPT. GARBAGE RUN.	0	580
Tuesday	31-Jan (4)CONT.-C.R.64-(83/B.B.E. to I-10 / 112).	4.7	440
Wednesday	1-Feb (4)*S.P./MOVE FURNITURE-C.A.1/HEALTH DEPT.	0	0
Thursday	2-Feb (4)*S.P./MOVE FURNITURE-C.A.1/HEALTH DEPT.	0	0
Friday	3-Feb (0)*OFF / 4-10's.	0.00	0
TOTAL		4.7	1020
<u>Assignment</u>		<u>Miles</u>	<u>Weight</u>
Monday	6-Feb (4)*ALL OF THE SOUTH WEST END PARKS DEPT. GARBAGE RUN.	0	820
Tuesday	7-Feb (3)CONT.-C.R.64-(B.B.E. to I-10 / 112).	3	0
Wednesday	8-Feb (3)FINISH:C.R.64-(I-10 to 112).	4.1	400
Thursday	9-Feb (4)FINISH: Linholm Road-(87 to 64); then ST.-C.R.64-(49 to 66 / 54).	3.8	160
Friday	10-Feb (0)*OFF / 4-10's.	0.00	0
TOTAL		10.9	1380
<u>Assignment</u>		<u>Miles</u>	<u>Weight</u>
Monday	13-Feb (4)*ALL OF THE SOUTH WEST END PARKS DEPT. GARBAGE RUN.	0	920
Tuesday	14-Feb (4)FINISH:C.R.64-(I-10 to 112).	5.2	540
Wednesday	15-Feb (4)*S.P./BLDG. INSPECTION - F'HOPE TO B'MINETTE/ONE OFFICE SET UP; C.R.38.	3.4	0
Thursday	16-Feb (4)FINISH:C.R.38-(B.B.E. to 87 / 38 EXT.). Then START:	2.2	460
Friday	17-Feb (0)*OFF / 4-10's.	0.00	0
TOTAL		10.8	1920
<u>Assignment</u>		<u>Miles</u>	<u>Weight</u>
Monday	20-Feb (0)*OFF / "PRESIDENTS DAY".	0	0
Tuesday	21-Feb (4)*S.P./C.A.1-CRYSTEL CARPENTER-STUFF; *ALL OF THE S/W END PARKS G/R.	0	440
Wednesday	22-Feb (3)START:PICKING UP LARGE TRASH ITEMS ON THE F.B.E. AND THE B.B.E.	1.5	440
Thursday	23-Feb (0)*OFF / "SICK LEAVE".	0	0
Friday	24-Feb (3)*S.P./PICK UP AND DISPOSE OF 337 DOCUMENT BOXES.	0.00	9,920
TOTAL		1.5	10800
<u>Assignment</u>		<u>Miles</u>	<u>Weight</u>
Monday	27-Feb (3)*CK.-SIBLEY ST; STYX RIVER BRIDGE; AND SEMINOLE BOAT RAMP.	0	0
Tuesday	28-Feb (0)*OFF / "MARDIS GRAS DAY".	0	0
Wednesday	1-Mar (3)START:C.R.68-(59 to 83 / B.B.E.).	5	0
Thursday	2-Mar (3)*S.P./C.A.1-AUDITORIUM RESET; FINISH.-C.R.68-(65 to 83 / B.B.E.); Fox Fackler R	2	320
Friday	3-Mar (3)*S.P./C.A.1-AUDITORIUM RESET; START:	0.00	0
TOTAL		7	320
<u>Assignment</u>		<u>Miles</u>	<u>Weight</u>
Monday	6-Mar (3)*ALL OF THE SOUTH WEST END PARKS DEPT. GARBAGE RUN.	0	800
Tuesday	7-Mar (3)START:F.B.E.-(8 TO 12 / 1.3 miles); then ST.-B.B.E.-(F.B.E. to 34).	4.5	420
Wednesday	8-Mar (3)CONT.-B.B.E.-(34 to 90).	5.3	340
Thursday	9-Mar (4)FINISH:B.B.E.-(90 to I-10).	6	600
Friday	10-Mar (0)*OFF / 4-10's.	0.00	0
TOTAL		15.8	2160
<u>Assignment</u>		<u>Miles</u>	<u>Weight</u>
Monday	13-Mar (0)*OFF / "ANNUAL LEAVE".	0	0
Tuesday	14-Mar (3)START:C.R.64-(66 to Rigsby); then ST.-C.R.55-(56 to Fackler Rd.).	4.7	300
Wednesday	15-Mar (3)FINISH:C.R.64-(66 to 49); then ST.-	4.5	440
Thursday	16-Mar (4)*S.P./FOLEY BLDG INSP. - F'HOPE B.I. TWO DESKS. CONT.-C.R.64 E/W. of 59.	1.3	0
Friday	17-Mar (0)*OFF / 4-10's.	0.00	0
TOTAL		10.5	740
<u>Assignment</u>		<u>Miles</u>	<u>Weight</u>

Monday	20-Mar (4)*CK.-Sibley St; Styx River Bridge; and Seminole Boat Ramp. Then START:	0	260
Tuesday	21-Mar (3)*S.P./BRATS-38 BOXES FOR DESTRUCTION; then ST.-C.R.64-(I-10 to B.B.E.).	4.4	1,280
Wednesday	22-Mar (4)START:C.R.64-(49 to Rigsby Road).	5.2	400
Thursday	23-Mar (2)START:C.R.55N-(52 to 59).	4.5	0
Friday	24-Mar (0)*OFF / 4-10's.	0.00	0
TOTAL		14.1	1940
<u>Assignment</u>			
Monday	27-Mar (4)*ALL OF THE SOUTH WEST END PARKS DEPT. GARBAGE RUN.	0	860
Tuesday	28-Mar (4)*S.P./C.A.1-Crystal Carpenter/Move office furniture. Then CONT.-C.R.55N-(52 to 56).	3	0
Wednesday	29-Mar (4)FINISH:C.R.55-(52 to 56); then Boaz Rd; Jenkin's Farm Road; C.R.66-(64 to 90).	5.2	1,540
Thursday	30-Mar (4)START:C.R.13-(104 to 64).	3.5	0
Friday	31-Mar (0)*OFF / 4-10's.	0.00	0
TOTAL		11.7	2400
<u>Assignment</u>			
Monday	3-Apr (0)*HELP WITH THE SOUTH WEST END PARKS DEPT. GARBAGE RUN.	0	0
Tuesday	4-Apr (3)START:C.R.64-(66 to 54); then ST.-C.R.87 N/S of 90. (BAD AREAS ON ROADS).	1	380
Wednesday	5-Apr (0)*NO INMATES TODAY BECAUSE OF WEATHER / CK. AREA/DISTRICT.	0	0
Thursday	6-Apr (3)START:C.R.91 / Seminole Area roads).	3.3	1,560
Friday	7-Apr (0)*OFF / 4-10's.	0.00	0
TOTAL		4.3	1940
<u>Assignment</u>			
Monday	10-Apr (4)*CK.-Sibley St; Styx River Bridge and Seminole Boat Ramp. *Moved G/Bags to L.P.	0	0
Tuesday	11-Apr (4)START: Patterson Road-(64 to Cow Pen Rd.).	3	0
Wednesday	12-Apr (3)START:C.R.49-(54 to Fackler Rd.).	3.6	420
Thursday	13-Apr (3)START:C.R.49-(north of LOVE'S).	3	0
Friday	14-Apr (0)*HOLIDAY / "GOOD FRIDAY".	0.00	0
TOTAL		9.6	420
<u>Assignment</u>			
Monday	17-Apr (3)*CK.-SIBLEY ST; STYX RIVER BRIDGE; AND SEMINOLE BOAT RAMP. *S.P. desk.	0	180
Tuesday	18-Apr (3)*S.P./EDA-C.A.1-2 DESKS/6-FILING CAB. MOVE TO STORAGE. C.R.64-(54 to 49).	4	0
Wednesday	19-Apr (3)START: Linholm Road-(87 to 64); then ST:C.R.64-(B.B.E. to I-10).	5.2	360
Thursday	20-Apr (3)FINISH:C.R.64-(B.B.E. to I-10); then ST.-C.R.64-(I-10 to 112).	1.5	220
Friday	21-Apr (0)*OFF / 4-10's.	0.00	0
TOTAL		10.7	760
<u>Assignment</u>			
Monday	24-Apr (3)*CK.-Sibley St; Styx River Bridge and Seminole Boat Ramp. Then CONTINUE:	1	220
Tuesday	25-Apr (3)START:C.R.112-(87 to 64).	3.8	0
Wednesday	26-Apr (3)START:C.R.55-(59 to 56); ST.-C.R.87-(90 to Day Road).	3	380
Thursday	27-Apr (4)START:C.R.54 - N./S. of 64; and then ST.-C.R.64-(181 to 49).	5.4	380
Friday	28-Apr (0)*OFF / 4-10's.	0.00	0
TOTAL		13.2	980

B.C.S.W. LITTER PATROL
DISTRICT 4
SPECIAL PROJECTS / TIME OFF

MONTH/ YEAR	DAYS OFF	PD HOL	GARBAGE RUN PARKS	VOTING	MOVING	WEIGHT	DAYS WORKED	MILES
Oct 16	0	0	4	0	0	4500	13	48.4
Nov 16	0	3	5	4	0	5000	5	32.6
Dec 16	4	2	3	0	0	4220	10	39.5
Jan 17	4	2	4	0	0	7540	8	56.8
Feb 17	2	2	4	0	0	4960	8	37
Mar 17	0	0	4	0	0	6180	14	50.5
Apr 17	0	1	4	0	0	5940	11	41.8
May 17							18	
June 17							18	
July 17							16	
Aug 17							19	
Sept 17							17	
TOTALS	10	10	28	4	0	38340	157	306.6

District 4 INMATE SUP Greg K.		Assignment		Miles	Weight
Monday	3-Oct	(4)*SOUTH EAST END PARKS DEPT. G/R; CK.-Foley Sat. C.H; Ft. Morgan Road.		0	300
Tuesday	4-Oct	(4)FINISH:C.R.99-(91 to 98); then ST.-C.R.93N; and NEXT-C.R.91N of 98.		4.1	0
Wednesday	5-Oct	(4)FINISH:C.R.91N of 98; and then St.-Gardner Rd.-(91 to 95).		4	580
Thursday	6-Oct	(4)START:B.B.E.-N (Foley Beach Exp. To 34).		3.5	180
Friday	7-Oct	(0)*OFF/4-10's.		0.00	0
TOTAL				11.6	1060
Assignment		Assignment		Miles	Weight
Monday	10-Oct	(4)*SOUTH EAST END PARKS DEPT. G/R; CK.-Foley Sat. C.H; Ft. Morgan Road.		0	480
Tuesday	11-Oct	(3)CONTINUE:C.R.95-(32 to 98); *HEALTH FAIR.		3.2	0
Wednesday	12-Oct	(3)FINISH:C.R.95-(98 to 32); then START:C.R.32-(C.C.Road to 87); and C.C. Road.		5.2	720
Thursday	13-Oct	(3)FINISH:C.C. Road; and ST.-C.R.32W-(C.C. Rd. to 87); ST.-C.R.87-(32 to 38).		3.4	220
Friday	14-Oct	(0)*OFF/4-10's.		0.00	0
TOTAL				11.8	1420
Assignment		Assignment		Miles	Weight
Monday	17-Oct	(3)*SOUTH EAST END PARKS DEPT. G/R; CK.-Foley Sat. C.H; Ft. Morgan Parks.		0	240
Tuesday	18-Oct	(4)FINISH:C.R.87N-(32 to 38); then ST.-C.R.87S-(32 to 98).		4.8	0
Wednesday	19-Oct	(4)START:C.R.32W-(87 to 83N).		5.4	320
Thursday	20-Oct	(4)FINISH:C.R.83 N./S. of 32.		1.5	520
Friday	21-Oct	(0)*OFF/4-10's.		0.00	0
TOTAL				11.7	1080
Assignment		Assignment		Miles	Weight
Monday	24-Oct	(4)*SOUTH EAST END PARKS DEPT. G/R; CK.-Foley Sat. C.H; Ft. Morgan Road.		0	200
Tuesday	25-Oct	(4)START:C.R.10W-(59 to 65 / 49).		4.9	0
Wednesday	26-Oct	(4)START:C.R.12E-(26 to 49 / 65).		5.1	480
Thursday	27-Oct	(4)FINISH:C.R.12E-(65 to 59); then START:C.R.65N-(10 to 12).		3.3	260
Friday	28-Oct	(0)*OFF/4-10's.		0.00	0
TOTAL				13.3	940
Assignment		Assignment		Miles	Weight
Monday	31-Oct	(4)*SOUTH EAST END PARKS DEPT. G/R; CK.-Foley Sat. C.H; Ft. Morgan Rd. Parks		0	260
Tuesday	1-Nov	(4)START:C.R.65-(10 to 98).		5.7	440
Wednesday	2-Nov	(2)*VOTING MACHINES.		0	0
Thursday	3-Nov	(2)*VOTING MACHINES.		0	0
Friday	4-Nov	(0)*OFF / 4-10's.		0.00	0
TOTAL				5.7	700
Assignment		Assignment		Miles	Weight
Monday	7-Nov	(4)*SOUTH EAST END PARKS DEPT. G/R; CK.-Foley Sat. C.H; Ft. Morgan Parks.		0	480
Tuesday	8-Nov	(3)FINISH:G/R; then START:C.R.65-(10 to 12).		0	0
Wednesday	9-Nov	(2)*VOTING MACHINES.		0	0
Thursday	10-Nov	(2)*VOTING MACHINES.		0	0
Friday	11-Nov	(0)*OFF / HOLIDAY-"VETERANS DAY".		0.00	0
TOTAL				0	480
Assignment		Assignment		Miles	Weight

Monday	14-Nov (3)*SOUTH EAST END PARKS DEPT. G/R; Foley Sat. C.H; Ft. Morgan two Parks.	0	500
Tuesday	15-Nov (3)START:C.R.65-(10 to 98).	5.9	580
Wednesday	16-Nov (3)CONT. / FINISH:C.R.49-(12 to 26 / Mag. Springs Bridge).	3.9	520
Thursday	17-Nov (3)CONT. / FINISH:C.R.65-(12 to 98).	3.6	540
Friday	18-Nov (0)*OFF / 4-10's.	0.00	0
TOTAL		13.4	2140
<u>Assignment</u>		<u>Miles</u>	<u>Weight</u>
Monday	21-Nov (4)*SOUTH EAST END PARKS DEPT. G/R; CK.-Foley Sat. C.H; Ft. Morgan Rd. Parks	0	480
Tuesday	22-Nov (4)FINISH:SOUTH EAST END G/R; ST.-	0	0
Wednesday	23-Nov (3)B.B.E.-(F.B.E. to 48).	4	180
Thursday	24-Nov (0)*OFF / HOLIDAY-"THANKSGIVING".	0	0
Friday	25-Nov (0)*OFF / HOLIDAY-"THANKSGIVING".	0.00	0
TOTAL		4	660
<u>Assignment</u>		<u>Miles</u>	<u>Weight</u>
Monday	28-Nov (4)*SOUTH EAST END PARKS DEPT. G/R; CK.-Foley Sat. C.H; Ft. Morgan Rd. Parks	0	400
Tuesday	29-Nov (4)START:C.R.16 and 19-(49 to 65).	4.5	380
Wednesday	30-Nov (4)FINISH:C.R.16 and 19-(49 to 65); START:Roscoe Roads E/W of F.B.E.	2.8	0
Thursday	1-Dec (4)FINISH:Roscoe Roads E/W of F.B.E.	2.2	240
Friday	2-Dec (0)*OFF/4-10's.	0.00	0
TOTAL		9.5	1020
<u>Assignment</u>		<u>Miles</u>	<u>Weight</u>
Monday	5-Dec (4)*SOUTH EAST END PARKS DEPT. G/R; Foley Sat.C.H; Ft. Morgan Pier, Morganto'	0	240
Tuesday	6-Dec (4)FINISH:C.R.20-(F.B.E. to 83); then ST.-C.R.20-(83/Elberta C.L. to 95).	4.5	0
Wednesday	7-Dec (4)START:C.R.95-(98 to 20); and ST.-C.R.87S-(98 to End).	4.9	500
Thursday	8-Dec (4)START:C.R.95-(20 to 42/Pirates Cove); then ST.-Leiterman Rd.-(95 to 97); and C.R.	5	120
Friday	9-Dec (0)*OFF / 4-10's.	0.00	0
TOTAL		14.4	860
<u>Assignment</u>		<u>Miles</u>	<u>Weight</u>
Monday	12-Dec (2)*SOUTH EAST END PARKS DEPT. G/R; CK.-Foley Sat. C.H; Ft. Morgan Rd. Parks	0	460
Tuesday	13-Dec (3)FINISH:C.R.97-(98 to Leiterman Road); then ST.-C.R.91-(98 to 99).	4.1	0
Wednesday	14-Dec (3)FINISH:C.R.91-(98 to 99); then ST.-C.R.99-(91 to 98).	5.2	0
Thursday	15-Dec (3)FINISH:C.R.99-(98 to 99); then ST.-C.R.93N-(98 to end).	1.3	440
Friday	16-Dec (0)*OFF / 4-10's.	0.00	0
TOTAL		10.6	900
<u>Assignment</u>		<u>Miles</u>	<u>Weight</u>
Monday	19-Dec (0)*NO INMATES TO COLD / DID SOUTH EAST END PARKS DEPT. GARBAGE RUN	0	0
Tuesday	20-Dec	0	300
Wednesday	21-Dec	1	0
Thursday	22-Dec	3.5	0
Friday	23-Dec (0)*OFF / "CHRISTMAS HOLIDAY".	0.00	0
TOTAL		4.5	300
<u>Assignment</u>		<u>Miles</u>	<u>Weight</u>
Monday	26-Dec (0)*OFF / "CHRISTMAS HOLIDAY".	0	0
Tuesday	27-Dec (3)*SOUTH EAST END PARKS DEPT. G/R; CK.-Foley C.H; Ft. Morgan Road Parks (2	0	900
Wednesday	28-Dec (3)START:Gardner Road-(91 to 95).	3.9	0
Thursday	29-Dec (3)START:C.R.112-(87 to Mile Marker 6).	2	560
Friday	30-Dec (4)CONTINUE:C.R.112-(M.M.24 to M.M.26).	4.10	700
TOTAL		10	2160
<u>Assignment</u>		<u>Miles</u>	<u>Weight</u>
Monday	2-Jan (0)*NEW YEARS HOLIDAY.	0	0
Tuesday	3-Jan (3)*SOUTH EAST END PARKS DEPT. GARBAGE RUN.	0	680
Wednesday	4-Jan (3)FINISH:FT. Morgan parks dept. g/r; then ST.-C.R.95-(98 to 32).	0	0
Thursday	5-Jan (3)START:C.R.95-(32 to 98).	3.3	320
Friday	6-Jan (3)FINISH:C.R.95-(32 to 98); then ST.-C.C.Road.	2.60	0
TOTAL		5.9	1000
<u>Assignment</u>		<u>Miles</u>	<u>Weight</u>
Monday	9-Jan (0)*OFF / "SICK LEAVE".	0	0
Tuesday	10-Jan (0)*OFF / "SICK LEAVE". (3)*M.B./START:C.R.32-(87 to 95); and ST.-C.R.87-(32 to 38	4.5	380
Wednesday	11-Jan (0)*OFF / "SICK LEAVE". (3)*M.B./START:C.R.32-(87 to 83); then ST.-C.R.87-(32 to 91	4.2	400
Thursday	12-Jan (0)*OFF / "SICK LEAVE". (3)*M.B./FINISH:C.R.87-(32 to 98); then ST.-C.R.83-(98 to 3;	6.5	540
Friday	13-Jan (0)*OFF / 4-10's.	0.00	0
TOTAL		15.2	1320
<u>Assignment</u>		<u>Miles</u>	<u>Weight</u>
Monday	16-Jan (0)*HOLIDAY / "MARTIN LUTHER KING - B."	0	0
Tuesday	17-Jan (3)*SOUTH EAST END PARKS DEPT. GARBAGE RUN.	0	560
Wednesday	18-Jan (2)FINISH:SOUTH EAST PARKS DEPT. GARBAGE RUN/FT. MORGAN 2 SPOTS.	0	0
Thursday	19-Jan (3)START:Roscoe Rd.-(F.B.E. to 4); then ST.-C.R.10-(59 to 65/49).	1.7	140
Friday	20-Jan (2)FINISH:Roscoe Road E./W. of F.B.E; then START:C.R.10-(59 to 65/49).	2.40	400
TOTAL		4.1	1100
<u>Assignment</u>		<u>Miles</u>	<u>Weight</u>
Monday	23-Jan (2)*ALL SOUTH EAST END PARKS DEPT. GARBAGE RUN.	0	420
Tuesday	24-Jan (3)FINISH:Roscoe Road - E./W. of the F.B.E; then ST.-C.R.10-(59 to 65/49).	5	440

Wednesday	25-Jan	(3)FINISH:C.R.10-(65 to 49/end); then ST.-C.R.12W of 59.	5.1	920
Thursday	26-Jan	(3)FINISH:C.R.12W-(59 to 65/49); then ST.-C.R.12-(49 to 26).	6.2	640
Friday	27-Jan	(0)*OFF / 4-10's.	0.00	0
TOTAL			16.3	2420
<u>Assignment</u>				
Monday	30-Jan	(4)*ALL OF THE SOUTH EAST END PARKS DEPT. GARBAGE RUN.	0	420
Tuesday	31-Jan	(4)START:C.R.16-(65 to 49); then ST.-C.R.19-(16 to 49).	4.5	320
Wednesday	1-Feb	(4)START:C.R.49-(26/Mag. Springs C.L. to 12 / 10).		
Thursday	2-Feb			
Friday	3-Feb	(0)*OFF/4-10's.	0.00	0
TOTAL			4.5	740
<u>Assignment</u>				
Monday	6-Feb	(3)*ALL OF THE SOUTH EAST END PARKS DEPT. GARBAGE RUN.	0	420
Tuesday	7-Feb	(3)FINISH:C.R.49-(10 to 26 / Mag. Springs C.L.); then ST.-C.R.65-(98 to 10).	2.5	0
Wednesday	8-Feb	(3)FINISH:C.R.65-(98 to 10).	2.9	600
Thursday	9-Feb	(3)START:Grantham Rd.-(26 to 98); then ST.-S. Hickory St.-(12 to 20).	3.8	0
Friday	10-Feb	(0)*OFF / 4-10's.	0.00	0
TOTAL			9.2	1020
<u>Assignment</u>				
Monday	13-Feb	(3)*ALL OF THE SOUTH EAST END PARKS DEPT. GARBAGE RUN.	0	1,020
Tuesday	14-Feb	(3)START:C.R.20-(F.B.E. to 83 / 95).	5.5	420
Wednesday	15-Feb	(3)FINISH:C.R.20-(83 / Elberta C.L. to 95); then ST.-C.R.95-(42 / 20 to 98).	5	260
Thursday	16-Feb	(3)*OFF / "ANNUAL LEAVE". *(M.B.) -ST.-C.R.95-(98 to 42); then ST.-Leiterman Road-(95 to 97). NEXT-C.R.97.	4.8	520
Friday	17-Feb	(0)*OFF / 4-10's.	0.00	0
TOTAL			15.3	2220
<u>Assignment</u>				
Monday	20-Feb	(0)*OFF / PRESIDENTS DAY".	0	0
Tuesday	21-Feb	(3)*ALL OF THE SOUTH EAST END PARKS DEPT. GARBAGE RUN.	0	0
Wednesday	22-Feb	(2)FINISH:SOUTH EAST PARKS DEPT. GARBAGE RUN.	0	300
Thursday	23-Feb	(3)*OFF / "ANNUAL LEAVE". *(M.B.) -ST.-C.R.39-(31 to 40); then Tall Pine Road.	4	720
Friday	24-Feb	(3)*OFF / "ANNUAL LEAVE". *(M.B.) -ST.-Jack Springs rd.-(61 to 47).	3.50	140
TOTAL			7.5	1160
<u>Assignment</u>				
Monday	27-Feb	(2)*SOUTH EAST END PARKS DEPT. GARBAGE RUN.	0	380
Tuesday	28-Feb	(0)*OFF / "MARDIS GRAS DAY".	0	0
Wednesday	1-Mar	(2)*FINISH SOUTH EAST END PARKS DEPT. GARBAGE RUN.	0	0
Thursday	2-Mar	(2)START:Leiterman Road-(95 to 97); then ST.-C.R.97-(Leiterman Rd. to 98).	2.5	0
Friday	3-Mar	(2)FINISH:C.R.97-(98 to Leiterman Road).	2.50	180
TOTAL			5	560
<u>Assignment</u>				
Monday	6-Mar	(2)*ALL OF THE SOUTH EAST END PARKS DEPT. GARBAGE RUN.	0	400
Tuesday	7-Mar	(3)FINISH:C.R.97-(98 to Leiterman Rd.); then Hygendoefer Road.NEXT-C.R.91-(98 to	5.7	0
Wednesday	8-Mar	(3)FINISH:C.R.91-(98 to 99); then ST.-C.R.99-(91 to 98).	2.5	0
Thursday	9-Mar	(4)FINISH:C.R.91; then ST.-C.R.99-(98 to 91).	4	920
Friday	10-Mar	(0)*OFF / 4-10's.	0.00	0
TOTAL			12.2	1320
<u>Assignment</u>				
Monday	13-Mar	(4)*SOUTH EAST END PARKS DEPT. GARBAGE RUN.	0	560
Tuesday	14-Mar	(4)FINISH:C.R.91-(98 to 99); then ST.-C.R.99-(98 to 91).	4	0
Wednesday	15-Mar	(4)FINISH:C.R.93N; then START:C.R.91-(98 to Gardner Rd.); then ST.-Gardner Road.	3.6	400
Thursday	16-Mar	(4)START:Gardner Road-(91 to 95); then ST.-C.R.95-(32 to 98).	4.9	200
Friday	17-Mar	(0)*OFF / 4-10's.	0.00	0
TOTAL			12.5	1160
<u>Assignment</u>				
Monday	20-Mar	(4)*ALL OF THE SOUTH EAST END PARKS DEPT. GARBAGE RUN.	0	520
Tuesday	21-Mar	(4)START:C.R.95-(98 to 32); ST.-C.R.32-(C.C.Road to 95).	5.6	540
Wednesday	22-Mar	(4)CONT.-C.R.32-(95 to 87 / 83N).	4.3	420
Thursday	23-Mar	(3)START:C.R.87-(38 to 32 / 98).	4.2	140
Friday	24-Mar	(0)*OFF / 4-10's.	0.00	0
TOTAL			14.1	1620
<u>Assignment</u>				
Monday	27-Mar	(4)*ALL OF THE SOUTH EAST END PARKS DEPT. GARBAGE RUN.	0	380
Tuesday	28-Mar	(4)FINISH:C.R.87-(32 to 98); then CONT.-C.R.32W-(87 to 83N).	6.3	0
Wednesday	29-Mar	(4)FINISH:C.R.83S; and 87N of 32; START:Roscoe Road-(F.B.E. to 4).	1.6	1,300
Thursday	30-Mar	(4)FINISH:Roscoe Road-(F.B.E. to F.B.E.); then ST.-C.R.10-(59 to 65).	3.8	400
Friday	31-Mar	(0)*OFF / 4-10's.	0.00	0
TOTAL			11.7	2080
<u>Assignment</u>				
Monday	3-Apr	(0)*ALL OF THE SOUTH EAST END PARKS DEPT. GARBAGE RUN.	0	0
Tuesday	4-Apr	(4)*FINISH: PARKS DEPT. GARBAGE RUN FOR SOUTH EAST END. CONT.-C.R.10.	3	660
Wednesday	5-Apr	(0)*NO INMATES TODAY BECAUSE OF WEATHER / CK. AREA/DISTRICT.	0	0
Thursday	6-Apr	(4)CONT.-C.R.12-(65 to 49 / 26).	5	580
Friday	7-Apr	(0)*OFF / 4-10's.	0.00	0

TOTAL	
Assignment	
Monday	10-Apr (4)*SOUTH EAST END PARKS DEPT. GARBAGE RUN.
Tuesday	11-Apr (4)FINISH:SOUTH EAST END PARKS DEPT. GARBAGE RUN.
Wednesday	12-Apr (4)FINISH:C.R.12-(26 to 49); then ST.-C.R.26-(49 to 12).
Thursday	13-Apr (4)START:C.R.26-(49 to 65).
Friday	14-Apr (0)*HOLIDAY / "GOOD FRIDAY".
TOTAL	
Assignment	
Monday	17-Apr (4)*ALL OF THE SOUTH EAST END PARKS DEPT. GARBAGE RUN.
Tuesday	18-Apr (4)FINISH:C.R.26-(49 to 65 / Foley C.L.).
Wednesday	19-Apr (4)FINISH:C.R.49-(26 / Bridge to 10); ST.-Doc McDuffie Road E/W.
Thursday	20-Apr (4)FINISH: Doc McDuffie Rd. - E/W; then ST.-Roscoe Rd.- E/W.
Friday	21-Apr (0)*OFF / 4-10's.
TOTAL	
Assignment	
Monday	24-Apr (4)*ALL OF THE SOUTH EAST END PARKS DEPT. GARBAGE RUN.
Tuesday	25-Apr (4)START:C.R.20-(Foley Beach Express to 83 / 95).
Wednesday	26-Apr (4)START:C.R.95-(Pirates Cove to 20); ST.-C.R.42 E./W. of 95.
Thursday	27-Apr (4)FINISH:C.R.95-(98 to 20 / 42); then ST.-Leiterman Rd.-(95 to 97).
Friday	28-Apr (0)*OFF / 4-10's.
TOTAL	

8		1240
Miles	Weight	
0		700
0		0
3.7		620
3.2		160
0.00		0
6.9		1480
Miles	Weight	
0		440
6.1		680
4.4		0
2.4		580
0.00		0
12.9		1700
Miles	Weight	
0		620
5.2		0
5		360
3.8		540
0.00		0
14		1520

BALDWIN COUNTY, ALABAMA COMMISSION DISTRICTS



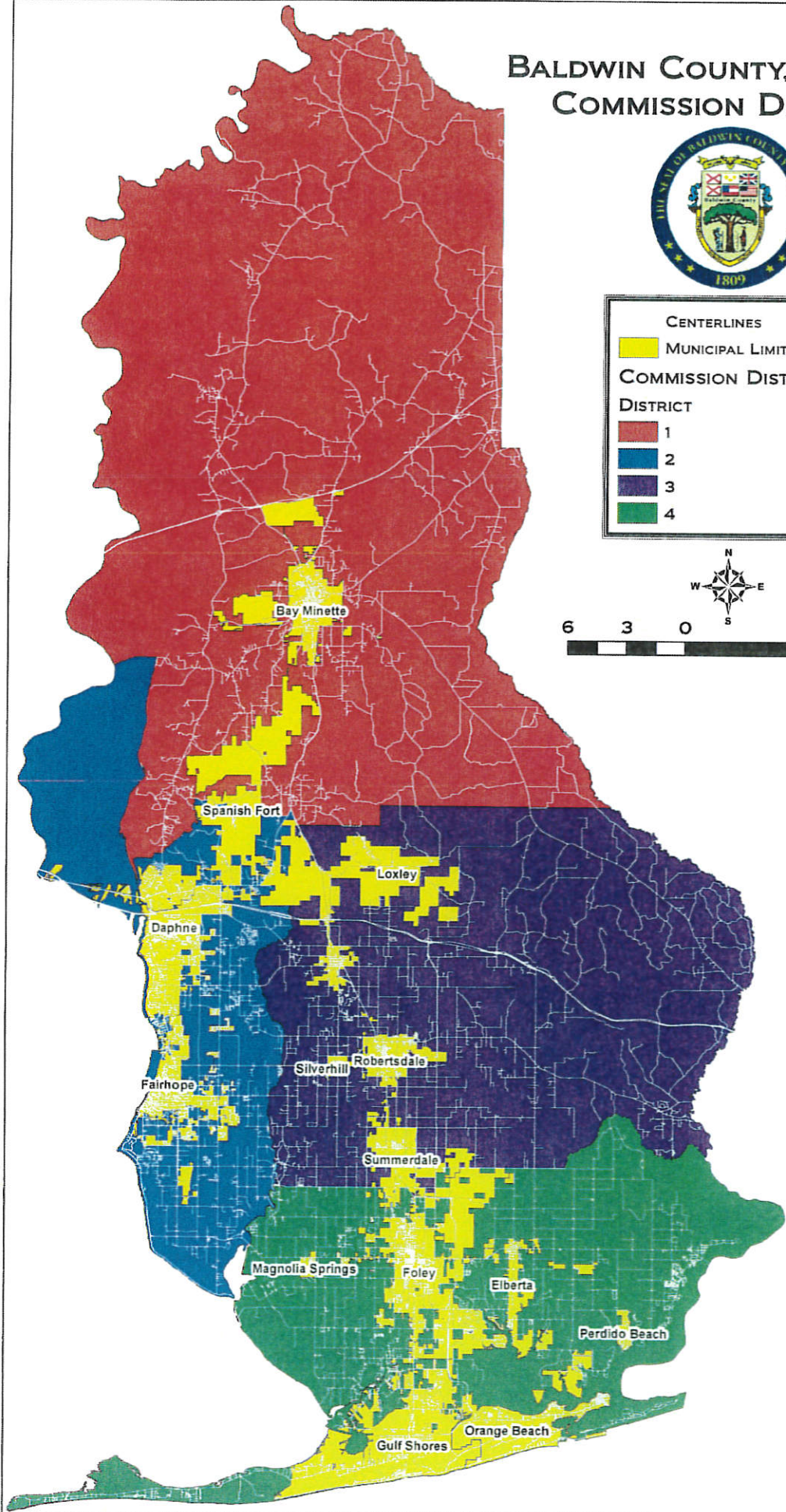
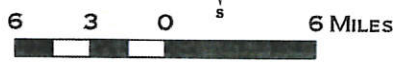
CENTERLINES

MUNICIPAL LIMITS

COMMISSION DISTRICTS

DISTRICT

- 1
- 2
- 3
- 4



THE INFORMATION CONTAINED IN THIS REPRESENTATION OF DIGITAL DATA DISTRIBUTED BY THE BALDWIN COUNTY COMMISSION'S GIS DEPARTMENT IS DERIVED FROM A VARIETY OF PUBLIC AND PRIVATE SOURCES AND IS CONSIDERED TO BE DEPENDABLE. HOWEVER, THE ACCURACY, COMPLETENESS, AND CURRENCY THEREOF ARE NOT GUARANTEED. THE BALDWIN COUNTY COMMISSION MAKES NO WARRANTIES, EXPRESSED OR IMPLIED, AS TO THE ACCURACY, COMPLETENESS, OR CURRENCY OF ANY INFORMATION OR DATA CONTAINED IN OR GENERATED FROM THE COUNTY GIS DEPARTMENT. NO LIABILITY SHALL BE ASSUMED FOR ANY PARTICULAR PURPOSE. ADDITIONALLY, THE BALDWIN COUNTY COMMISSION OR ANY AGENT, SERVANT, OR EMPLOYEE THEREOF ASSUMES NO LIABILITY ASSOCIATED WITH THE USE OF THIS DATA, AND ASSUMES NO RESPONSIBILITY TO MAINTAIN IT IN ANY MATTER OR FORM. FOR MORE INFORMATION CONCERNING THIS MAP CALL 251.580.2535.

BALDWIN COUNTY COMMISSION AGENDA ACTION FORM

Meeting Type:	Baldwin County Commission – Regular
Meeting Date:	03/07/2017
Placement of Item on the Agenda:	OTHER STAFF RECOMMENDATIONS: - HIGHWAY
Item Status:	New
Submitted By:	Vincent Ramer
From:	Joey Nunnally, P.E., Interim County Engineer Seth Peterson, P.E., Permit/Subdivision Manager
ITEM TITLE	
License Agreement #17003 - Baldwin County Sewer Service, LLC - Sewer Force Main Installation on an Unmaintained Right-of-Way off Ferry Road and Boat Launch at Honey Road	
STAFF RECOMMENDATION	
Approve License Agreement #17003 permitting Baldwin County Sewer Service, LLC to install a 10" sewer main on the unmaintained right-of-way off Ferry Road on the west side of Fish River and the boat launch parking area off Honey Road on the east side of Fish River contingent upon the Licensee obtaining a US Army Corps of Engineers Permit and State Lands Utility Permit.	
BACKGROUND INFORMATION	
Previous Commission Action/Background Information:	No
<p>Baldwin County Sewer Service (BCSS) would like to install a 10" sewer force main on the unmaintained right of way off Ferry Road and at the boat launch parking area off Honey Road.</p> <p>Currently BCSS is tied into the City of Fairhope's sewer line. The City of Fairhope has requested the sewage from BCSS be treated elsewhere. This proposed installation will carry BCSS sewage from the west side of Fish River to the east side of Fish River at the boat launch at Honey Road.</p>	
FINANCIAL IMPACT	
Does the recommendation have a financial impact?	No

LEGAL IMPACT	
Are there any legal documents required to be executed if this recommendation is approved?	Yes
Does this documentation require County Attorney's review and approval?	Yes
Has the documentation been reviewed and approved by the County Attorney?	Yes
Is this routine documentation reviewed and approved by Department Head?	No
ADVERTISING REQUIREMENTS	
Is advertising required for this recommendation?	No
CONSISTENCY WITH B.C. STRATEGIC PLAN - 2006-2016	
Is the recommendation applicable to the goals set forth in the Strategic Plan?	No
What is the justification for approving the recommendation?	N/A
POLICY IMPACT	
Is the recommendation consistent with Commission Policy?	Yes
Which Commission policy is applicable to this recommendation?	Policy 9.11 - License Agreement between County and Citizens/Corporations for Work on County Right of Ways
PERSONNEL IMPACT	
Does the recommendation have personnel impact?	No
IMPLEMENTATION	
Is implementation for this item time sensitive?	No
Department(s)/Individual(s) responsible for follow up activities and specific actions required:	<p>Administration staff have license agreement executed by the Chairman and the original forwarded to the County Engineer. John Lundy will issue the license agreement and conduct all necessary follow-up inspections on work performed.</p> <p>(Please list Seth Peterson as Originator of this license agreement.)</p> <p>Contact: Richie Barnett</p>

	14747 Underwood Road Summerdale, AL 36580
ATTACHMENTS	
1. License Agreement.pdf 2. Vicinity Map.pdf 3. Site Map.pdf 4. Overall Plan.pdf 5. Photos.pdf 6. City of Fairhope Letter to Baldwin County Sewer Service.pdf	
APPROVALS	
Budget	
Personnel	
Administration	Keri Green 3/2/2017 11:06:30 AM
Chairman and County Administrator	Chris Elliott 3/2/2017 3:17:33 PM

LICENSE AGREEMENT

This LICENSE AGREEMENT (this "Agreement") between Baldwin County, Alabama, ("Licensor"), with an address at 312 Courthouse Square, Suite 12, Bay Minette, Alabama 36507 and **Baldwin County Sewer Service, LLC, C/O Richie Barnett ("Licensee")** with an address at **14747 Underwood Road Summerdale, AL 36580.**

WITNESSETH:

WHEREAS, Licensor is the owner of the real property described as **the right-of-way known as Kenny Drive East on the west side of Fish River and the boat launch parking area off of Honey Road on the east side of Fish River** and more particularly as shown on **Vicinity Map and Site Map** attached hereto and included as if fully set forth herein (the "Property").

WHEREAS, Licensee desires to obtain access to the Property for the purposes of: **installing a 10-inch sewer force main from Ferry Road to the existing line at the boat launch on Honey Road. This Agreement covers the installation along the ROW of Kenny Drive East as well as the Honey Road boat launch and ROW. The Baldwin County Utility Permit Guidelines shall be utilized. Any damage to private property or County right of way shall be repaired to the previous state or improved as required by Baldwin County. Appropriate erosion and sediment control practices shall be utilized. The boat launch shall not be blocked at any time** and Licensor is willing to provide such access pursuant to this Agreement.

WHEREAS, pursuant thereto Licensee agrees to defend, indemnify and hold the Licensor and Licensor's Representatives harmless from any and all claims or demands for injuries or damage to persons or property and further agrees to assure the Licensor that he or she, nor any persons using said public access in conjunction with this License would claim any personal rights in the subject property or any rights of adverse possession.

NOW, THEREFORE, for good and valuable consideration, the receipt and sufficiency of which are hereby acknowledged by Licensor, the parties agree as follows:

1. **Recitals.** The above recitals and statements are incorporated as part of this Agreement as if fully set forth herein.
2. **Grant of License.** Subject to the terms and conditions set forth herein, Licensor hereby grants to Licensee, **Baldwin County Sewer Service,** a revocable, non-exclusive, temporary license (the "License") to enter upon the Property as is reasonably required to **install a 10-inch sewer force main.** Any other use of the Property requires the prior written consent of Licensor in each instance. This License is granted to Licensee and is limited and specifically restricted to Licensee and its employees ("Licensee Representatives"). Licensee shall comply with Licensor's safety and security policies deemed to be necessary by Licensor and with such reasonable rules and regulations as Licensor, or its agents may impose from time to time by notice to Licensee.
3. **Property.** The real property subject hereto is limited to and sufficiently described as: as **the unmaintained right of way off of Ferry Road on the west side of Fish River and the boat launch parking area off of Honey Road on the east side of Fish River.** Any exhibits referenced and attached hereto shall be incorporated herein as if fully set forth.
4. **Term of License (Installation and Maintenance).** The term of the License for Installation shall commence on the date of full execution of this Agreement. The term for installation, unless sooner terminated, shall automatically terminate and expire at 11:59 p.m. on **March 1, 2018.** Maintenance shall be **indefinite** according to the terms of this Agreement, or until modified by agreement with the County.
5. **Condition of License Area: Assumption of Risk.** Licensee accepts the Property in its "WHERE IS", "AS IS", condition and acknowledges that Licensor has made no representation or warranty to Licensee as to, and has no obligation for the condition of the Property. Licensee assumes the risk of any latent or patent defects or problems that are or may be on the Property or the improvements thereon. Licensee agrees that Licensor shall not be liable for any injury, loss or damage on account of any such defects or problems. Licensee for itself and the Licensee Representatives waives and releases Licensor from any and all claims for injury to persons or damage to the property, whether real or personal, of Licensee or any Licensee Representatives by reason of the condition of the Property or otherwise.

License Agreement 17003

6. Compliance. Licensee and the Licensee Representatives shall comply, at Licensee's expense, with all applicable laws, regulations, rules and orders, whether federal, state or local, or any regulation of any governmental body having jurisdiction over the Property with respect to Licensee's work and activities at the Property, regardless of when they become effective. Licensee, at its cost, shall obtain any applicable licenses or permits required by applicable laws and regulations for the use of the Property. Licensee shall not use, nor permit the use, of the Property for any purpose in violation of such laws, regulations, rules or orders. Licensee agrees not to use said right-of-way in any fashion which will in any way damage or restrict the same for future use by the public in general for a public right-of-way. Furthermore, said usage as described herein, or the placement of said usage, shall not in any way alter the present or future rights of the Licensor to move, relocate, amend, or otherwise change said travel way to any other location whatsoever.

7. Public Property. Licensee acknowledges and consents that said property/right of way is public in nature and that the usage hereunder is permissive. Licensee shall not obstruct or otherwise interrupt any rights of the general public to the property. Licensee makes no claim of private ownership or other possessory interest in the property subject hereto, and any rights of the Licensee in the property will be limited to the same extent as that of the general public. Any work performed by Licensee, or any improvements made as a result of the Licensee's work, on the property is considered to be a benefit to the general public, and the Licensee makes no claim that such work or improvements are privately owned and waives all right to claims that such work or improvements are private in nature.

8. Indemnification. Licensee shall indemnify, defend and hold Licensor and its Commissioners, affiliates, employees, agents, representatives, contractors, subcontractors, licensees and invitees (collectively, "Licensor Representatives") harmless from and against any and all claims, demands, liabilities, damages, losses, judgments, costs, and expenses including, without limitation, attorneys' fees and costs, for any and all personal injury (including death) and property damage of any kind or nature whatsoever, incurred by or imposed upon Licensor or any Licensor Representative, as a result of any entry upon or activity conducted by, or any act or omission, by Licensee or any Licensee Representative. The Licensee shall also assume the responsibility for any claims for damage done to property due to the exercise, usage and/or presence of the resulting work as a result of this License.

9. No Alteration. Except as expressly permitted by this Agreement, Licensee shall not make nor permit any uses alterations or additions to the Property without Licensor's prior written consent.

10. Removal and Completion Upon Termination. Upon the expiration or termination of this License, Licensee shall (a) peaceably deliver to Licensor the full possession of the Property; (b) remove all materials, equipment, debris, waste, staged fill materials and improvements placed thereon by Licensee or Licensee Representatives (or resulting from work under this Agreement); and (c) repair any damage to the Property and restore the Property to its condition on the date of this Agreement. Should Licensee fail, within thirty (30) days after the date of the termination of this License, to make such removal, repair and restoration, Licensor may, at its option, remove said materials, equipment and improvements and complete said repair and restoration at the sole cost of Licensee. Licensee shall reimburse Licensor for such costs within thirty (30) days after request by Licensor.

11. Damage to Property. Licensee agrees to pay for any damage which may arise to buildings, fences, machinery, or other property of Licensor or any third party on or near the Property resulting from Licensee's operations or presence on the Property. Licensee shall reimburse any and all costs related to any and all corrections, changes or improvements deemed to be necessary by Licensor as a result of work performed pursuant to this Agreement or as a result thereof.

12. Standard of Operation: Expenses. Licensee shall conduct all of its operations in a safe and workmanlike manner. All work and activities which Licensee performs at the Property shall be at Licensee's sole cost and expense.

13. Insurance. Prior to occupying or using the Property, Licensee shall carry, with insurers satisfactory to Licensor, throughout the term hereof, Auto Liability Insurance, including owned, hired and non-owned vehicles, with limits of not less than \$1,000,000, combined single limit, for both bodily injury liability and property damage liability each occurrence; Commercial General Liability Insurance, including all contractual liability hereunder, with limits not less than \$1,000,000, combined single limit, for both bodily injury liability and property damage liability each

License Agreement 17003

occurrence; and Worker's Compensation Insurance, meeting the statutory limits of the state where the Property is located and Employer's Liability Insurance fully covering all employees and supervisors participating in the work at the Property with limits not less than \$1,000,000 each accident and \$1,000,000 each employee disease. All liability insurance shall name Licensor as an additional insured. Prior to commencing operations hereunder, a Certificate of Insurance evidencing such coverage, satisfactory to Licensor, shall be furnished to Licensor, which shall specifically state that such insurance shall provide for at least ten (10) days' notice to Licensor in the event of cancellation, termination or any change in such insurance policies. The workers compensation certificate shall bear an endorsement clearly evidencing a waiver of the right of subrogation against Licensor and Licensor Representatives. Should Licensee fail to furnish current evidence upon demand of any insurance required hereunder, or in the event of cancellation, termination or change in any such insurance, Licensor may, at its option, suspend this Agreement until insurance is obtained or terminate this Agreement immediately without further action.

14. Responsibility. Licensee shall be responsible for compliance by Licensee Representatives with the terms of this Agreement and for all acts or omissions by Licensee Representatives on the Property.

15. No Assignment. Licensee shall not have the right to assign this Agreement or any rights or obligations hereunder without Licensor's prior written permission. Any attempted assignment shall be void. No assignment shall relieve Licensee of its liabilities and obligations herein.

16. Agency. It is neither the express nor the implied intent of the Parties to create an agency relationship pursuant to this License; therefore, any actions of the parties shall not be considered or implied to create such agency.

17. No Waiver. The failure of Licensor or Licensee to insist upon a strict performance of any of the terms, conditions and covenants herein shall not be deemed a waiver of any subsequent breach or default in the terms, conditions and covenants herein contained.

18. Termination. It is understood and agreed that Licensor, in its absolute discretion, with or without cause or hearing, may terminate the license and permission herein granted to Licensee. Termination of the license and permission herein granted may be accomplished in writing, or orally. Once notice of termination is given by Licensor to Licensee, the permission herein granted shall immediately and automatically terminate and Licensee shall have no further right, permission or authority to utilize the Property. The indemnity obligations set forth in this Agreement shall survive termination or expiration of this Agreement.

19. Miscellaneous.

(a) This Agreement shall not be construed more strictly against one party than against the other merely by virtue of the fact that it may have been prepared by counsel for one of the parties. Both Licensor and Licensee have contributed substantially and materially to the preparation of this Agreement.

(b) This Agreement shall apply to and bind the successors and permitted assigns of the respective parties.

(c) This Agreement embodies the entire agreement and understanding of the parties, and there are no further or prior agreements or understandings, written or oral, in effect between the parties relating to the subject matter hereof.

(d) This Agreement may not be modified orally or in any manner other than by an agreement in writing signed by the parties or their respective successors or permitted assigns.

(e) The headings in this Agreement are for convenience of reference only and shall not limit or otherwise affect the meaning hereof.

(f) This Agreement may be executed in any number or counterparts, each of which shall be an original, but all of which together shall constitute one and the same instrument. This agreement may be delivered by facsimile transmission.

(g) This Agreement shall be construed in accordance with and governed by the laws of the State of Alabama.

(h) Licensee's obligations under this Agreement shall survive expiration or termination of this Agreement.

20. Financial Terms/Conditions. The Licensee shall incur and absorb all financial responsibility that arises to complete the said described project and shall remain responsible for the duration of the Agreement. The Licensor shall not incur any expense of the usage/maintenance described in this agreement. These financial responsibilities shall lie solely with the Licensee.

21. Terms of Maintenance Agreement. Any damage to the existing Right-of-Way caused by periodic maintenance to the property shall be the sole responsibility of the Licensee to repair at the Licensee's expense.

License Agreement 17003

IN WITNESS WHEREOF, the parties have executed this Agreement as of the date of full execution by Licensors below.

LICENSEE:

BALDWIN COUNTY SEWER SERVICE, LLC

BY: _____ /
Its: _____ /DATE

State of Alabama)
County of Baldwin)

I, _____, a Notary Public in and for said County, in said State, hereby certify that **Richie Barnett**, is the individual whose name is signed to the foregoing instrument, and who is known to me, acknowledged before me on this day that, being informed of the contents of the instrument, she executed the same with full authority to do so voluntarily and personally on the day the same bears date.

Given under my hand and official seal, this the ____ day of _____, 2017.

Notary Public
My Commission Expires: _____

LICENSOR:

BALDWIN COUNTY, ALABAMA

T. CHRISTOPHER ELLIOTT / DATE
CHAIRMAN

ATTEST:

RONALD J. CINK / DATE
COUNTY ADMINISTRATOR

State of Alabama)
County of Baldwin)

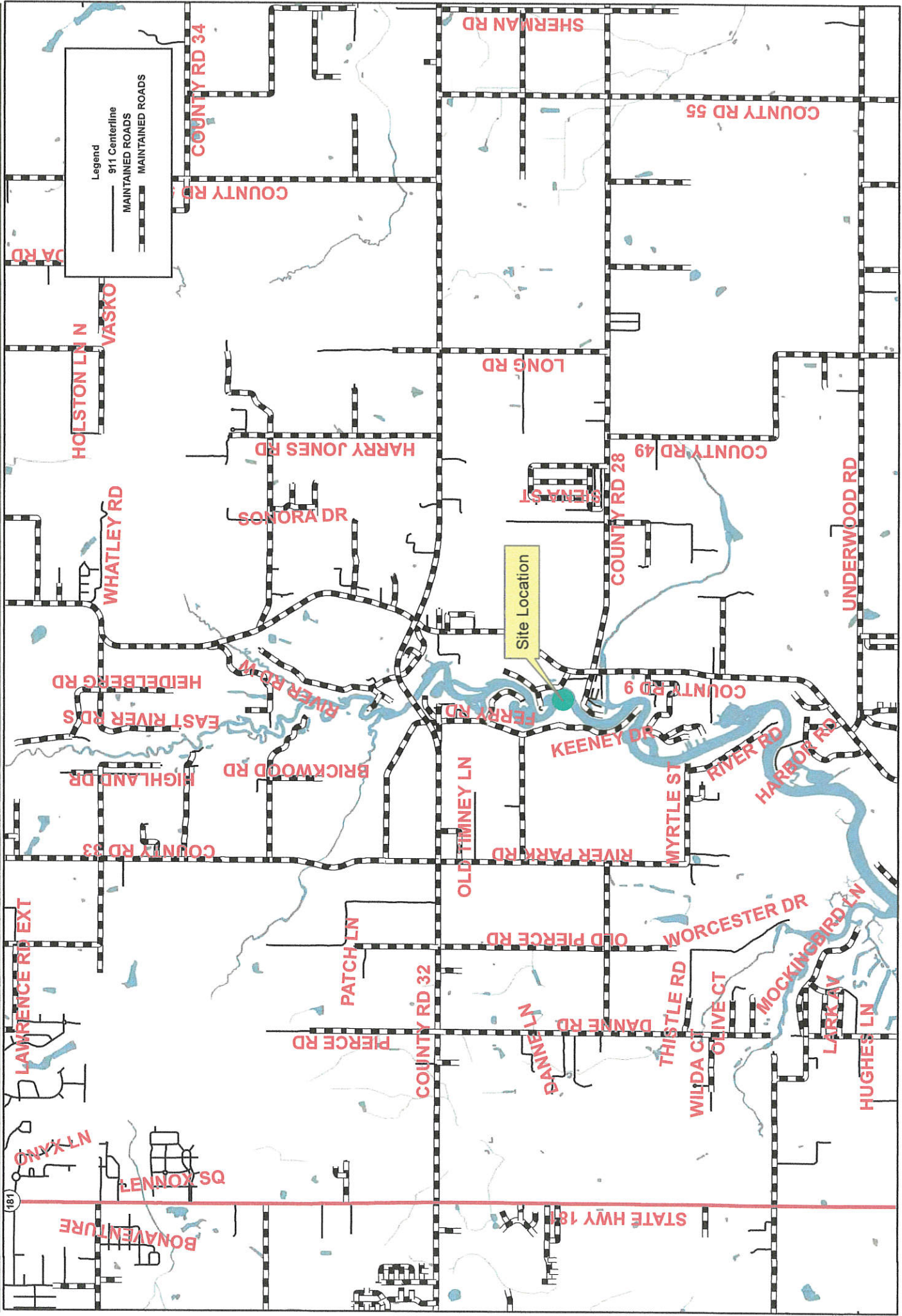
I, _____, a Notary Public in and for said County, in said State, hereby certify that T. CHRISTOPHER ELLIOTT and RONALD J. CINK, as Chairman and County Administrator of the Baldwin County Commission, respectively, and whose names are signed to the foregoing instrument and who are known to me, acknowledged before me on this date that, being informed of the contents of said instrument, they executed the same voluntarily for and as an act of the Baldwin County Commission.

Given under my hand and official seal, this the ____ day of _____, 2017.

Notary Public
My Commission Expires: _____



License Agreement #17003





License Agreement #17003

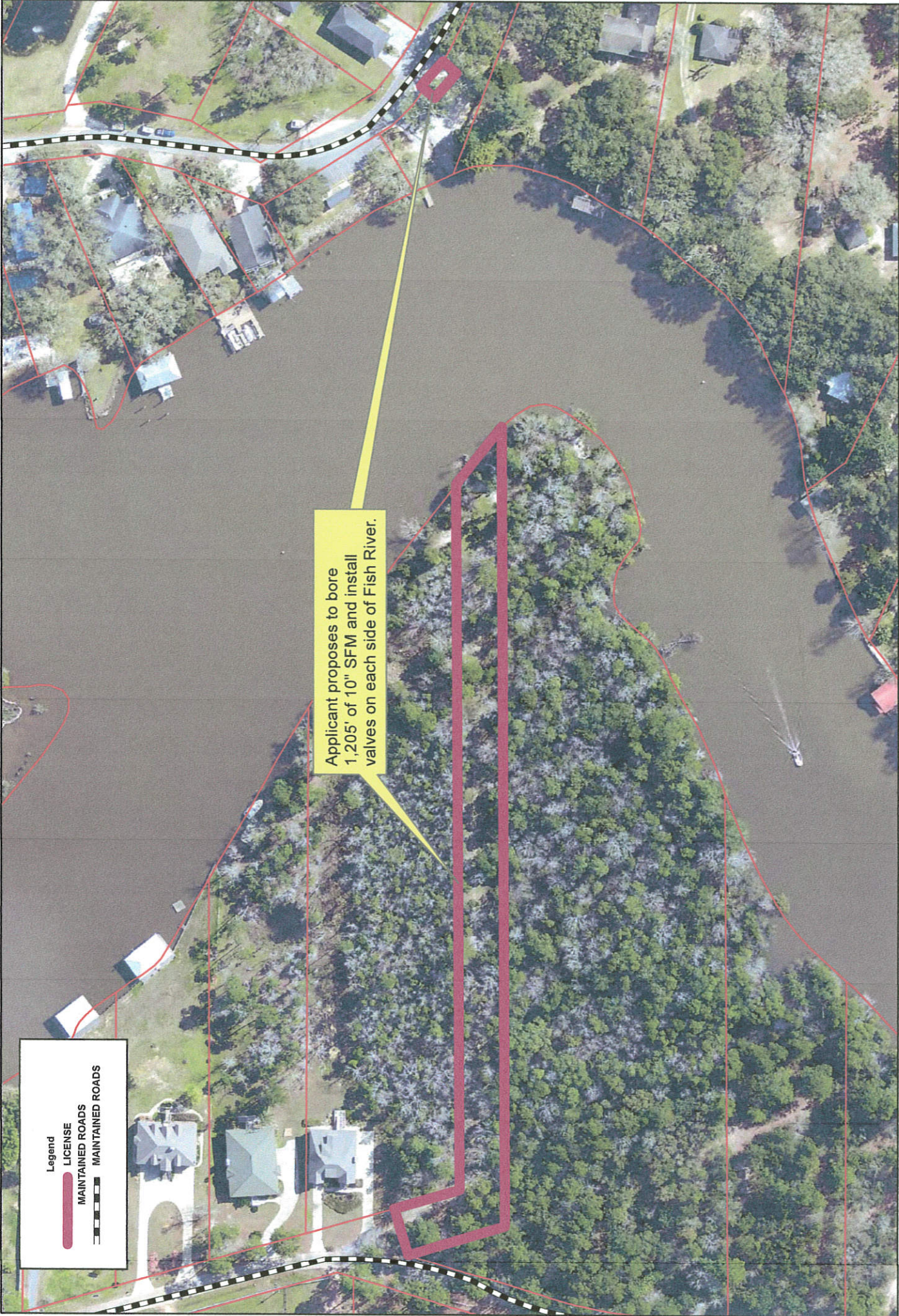


Legend

LICENSE

MAINTAINED ROADS

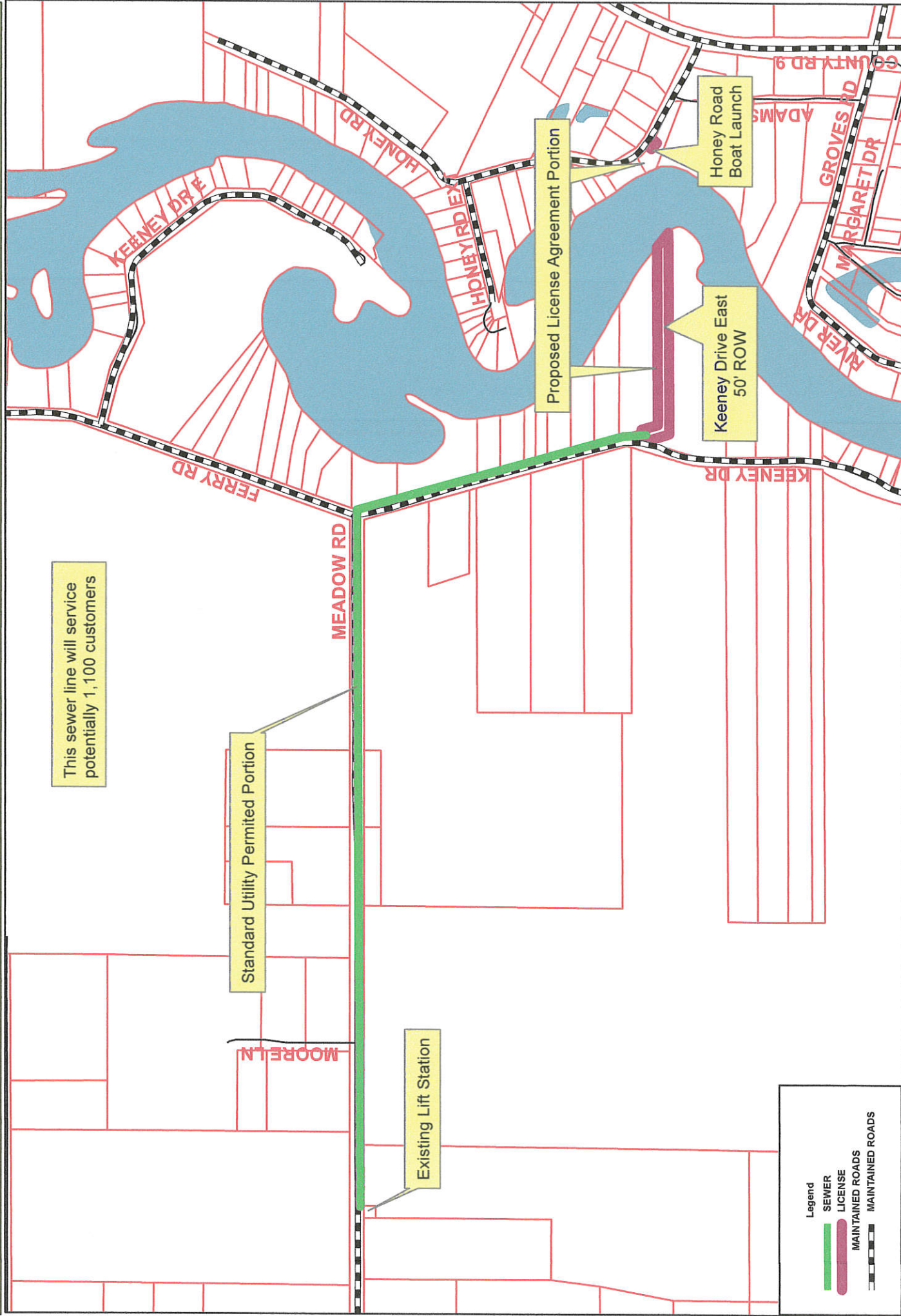
MAINTAINED ROADS



Applicant proposes to bore 1,205' of 10" SFM and install valves on each side of Fish River.



License Agreement #17003 - BCSS







RSA BATTLE HOUSE TOWER
11 NORTH WATER STREET, SUITE 1200
MOBILE, ALABAMA 36602
251-432-1414
FAX 251-433-4106
www.joneswalker.com

Matthew C. McDonald
Direct Dial 251-439-7576
Direct Fax 251-439-7385
mmcdonald@joneswalker.com

December 20, 2016

Via email: office@baldwincountysewer.com

Clarence Burke, President
Baldwin County Sewer Service, LLC
P.O. Box 1629
Foley, Alabama 36536

Re: Wastewater Treatment Agreement dated July 13, 2007

Dear Clarence:

On behalf of the City of Fairhope ("City"), we are writing to inform Baldwin County Sewer Service ("BCSS") that the Wastewater Treatment Agreement ("the Agreement") entered into by and between BCSS and the City on July 13, 2007 will terminate pursuant to its terms on July 12, 2017. The City has been providing wastewater treatment services to BCSS and its customers pursuant to the Agreement, and upon its termination, the Agreement provides that "BCSS and the City will jointly disconnect the lines at the Connection Point and each party will be responsible for capping the disconnected ends of their respective lines." Although the Agreement provides that the parties may mutually agree, in writing, to extend the Agreement's term, please be advised that the City does not intend, and will not agree, to extend the Agreement.

We are providing this notification to you in advance so that that BCSS may make arrangements for wastewater treatment for the customers presently being serviced by the 2007 Agreement. If you care to discuss this or have any questions, please do not hesitate to contact me.

Very truly yours,

A handwritten signature in dark ink, appearing to read 'Matthew C. McDonald'.

Matthew C. McDonald

MCM/bv

JONES WALKER LLP

There being no further requests to address the Commission, Chairman Elliott closed the public hearing at 9:28 a.m.

MOTION BY COMMISSIONER FRANK BURT, JR., SECONDED BY COMMISSIONER CHARLES F. GRUBER, TO ADOPT **RESOLUTION #2017-044**, WHICH APPROVES CASE #Z-17002, WISHINSKY PROPERTY, AS IT PERTAINS TO THE REZONING OF 10.1 ACRES, MORE OR LESS, LOCATED IN PLANNING (ZONING) DISTRICT 15, FROM RSF-E, RESIDENTIAL SINGLE FAMILY ESTATE DISTRICT, TO RR, RURAL DISTRICT.

Ayes:	4	Commissioners:	Frank Burt, Jr., Chris Elliott, J. Tucker Dorsey, Charles F. Gruber
No:	0	Commissioners:	(None)
Abstain:	0	Commissioners:	(None)
Absent:	0	Commissioners:	(None)

MOTION PASSED.

(EA1) - PAYMENT OF BILLS

MOTION BY COMMISSIONER CHARLES F. GRUBER, SECONDED BY COMMISSIONER FRANK BURT, JR., TO PAY BILLS TOTALING \$8,933,065.57 (EIGHT MILLION, NINE HUNDRED THIRTY-THREE THOUSAND, SIXTY-FIVE DOLLARS AND FIFTY-SEVEN CENTS). OF THIS AMOUNT, \$6,646,050.09 (SIX MILLION, SIX HUNDRED FORTY-SIX THOUSAND, FIFTY DOLLARS AND NINE CENTS) IS PAYABLE TO THE BALDWIN COUNTY BOARD OF EDUCATION FOR ITS PORTION OF COUNTY SALES AND USE TAX.

Ayes:	4	Commissioners:	Frank Burt, Jr., Chris Elliott, J. Tucker Dorsey, Charles F. Gruber
No:	0	Commissioners:	(None)
Abstain:	0	Commissioners:	(None)
Absent:	0	Commissioners:	(None)

MOTION PASSED.

(EA2) - NOTIFICATION OF INTERIM PAYMENTS APPROVED BY CLERK/TREASURER AS ALLOWED UNDER POLICY 8.1

Ron Cink, County Administrator/Budget Director, informed the Commission that the **Baldwin County Commission Interim Payments – March 7, 2017**, made by the Clerk/Treasurer totaling \$2,110,557.74 (two million, one hundred ten thousand, five hundred fifty-seven dollars and seventy-four cents), are a part of the record.

(GA1) - LICENSE AGREEMENT #17003 - BALDWIN COUNTY SEWER SERVICE, LLC - SEWER FORCE MAIN INSTALLATION ON AN UNMAINTAINED RIGHT- OF-WAY OFF FERRY ROAD AND BOAT LAUNCH AT HONEY ROAD

Chairman Elliott noted for the record that Commissioner Dorsey and David Conner, County

Attorney, have left the Chambers and the meeting and will not participate in any discussion regarding Item GA1.

Baldwin County Sewer Service (BCSS) would like to install a 10" sewer force main on the unmaintained right of way off Ferry Road and at the boat launch parking area off Honey Road.

Currently BCSS is tied into the City of Fairhope's sewer line. The City of Fairhope has requested the sewage from BCSS be treated elsewhere. This proposed installation will carry BCSS sewage from the west side of Fish River to the east side of Fish River at the boat launch at Honey Road.

Joey Nunnally, Acting and Interim County Engineer, appeared before the Commission and said this is covering an unopened right-of-way where the ferry used to dock. BCSS has been notified that they will need to get off the City of Fairhope's system. Their 10-year agreement with the City has now expired and the City of Fairhope does not want to renew the agreement. Everyone that is on sewer in the area has to get off. BCSS wants to take the sewer down the right-of-way, under Fish River and back up the other side to tie into the existing line and take it to their plant. If the Commission approves the recommendation, it will be contingent upon BCSS getting other permits from the U.S. Army Corps of Engineers and the Alabama Department of Conservation and Natural Resources, State Lands Division.

Chairman Elliott said it is important to make the distinction that the Commission is approving access to the County right-of-way only, but not necessarily the portion that is under the jurisdiction of the State Lands Division or the Corps of Engineers.

Mr. Nunnally said Chairman Elliott is correct. This recommendation is only for the County right-of-way and not under Fish River.

Mr. Bill Levett appeared before the Commission and said he lives near the subject area. He is concerned that the Commission is entering into muddy waters. The sewer company wants to lay pipe down and bore into the river. Fish River is a sensitive river; there have been spills in the Loxley area that came down through Corn Branch. Mr. Levett said the City of Fairhope is pushing hard to get this open. They want to get out from under the pressure of treating the outlying subdivisions outside of Fairhope. The problem is the Commission will take this issue from the City of Fairhope and stick it somewhere else. Mr. Levett said he is unsure where the sewer will be treated once it is on the other side of the river and no one will tell him. The subject road is narrow where the ferry used to cross the river and it has grown up. The County has cleaned the road, but a lot of people go there and party. Mr. Levett said his issue is who will monitor this. He asked BCSS why can this not be placed and fastened under the bridge instead of coming through a residential neighborhood. The ground is very soggy in that area. He does not see how this pipe will not burst within a certain length of time, either on land or under the water. Mr. Levett said he does not want to see Fish River become polluted. He does not want to see untreated or even treated sewage going into the river; he would appreciate it if the Commissioners can help. Mr. Levett said no one in the neighborhood knew this was happening. All of a sudden, he started to see pipes thrown around on the ground. When he talked with the people working on the pipes he was told this was in the wrong location. However, it was already stated the pipes were going there. Mr. Levett said this is why he is here today. He knows he is fighting a losing battle and he

understands that. Mr. Levett said he wants his family to know that it is a matter of record that he does not want the sewer in Fish River. He does not care how much growth happens in the City of Fairhope, local residents should not have to pay the price.

Chairman Elliott asked if Mr. Nunnally has any answers to Mr. Levett's concerns?

Mr. Nunnally said he met onsite with the engineering firm and asked that they give him a fracture plan. This means if there is a spill or fracture from the line, there is a written plan in action that will take care of the problem. Baldwin County's requirement is to have a valve on each side to shut off the sewer line if it should leak. Mr. Nunnally said he hopes this alleviates some of Mr. Levett's concerns. Staff does not want to hurt the environment any more than anyone else.

Commissioner Gruber said an HDPE pipe will be used and it is $\frac{3}{4}$ of an inch thick. It is welded together and there is no slippage or leaking with it. The pipes are safe most of the time, very seldom is it heard of that pipe breaking underground. Commissioner Gruber said the Corps of Engineers require that the pipe is placed a certain number of feet below the mud line.

Mr. Nunnally said Mr. Levett stated, from the audience, that the Corps of Engineers require 15 feet. Mr. Nunnally does not feel the Corps of Engineers has a minimum requirement, they rely on the engineering company to come up with that. He feels it will be 10 feet below the mud lines. If this changes, he will let the Commission know. The engineering firm is still in the process of getting this approved through the Corps of Engineers.

Commissioner Gruber said this is all contingent upon the Corps of Engineers approving this, to which Mr. Nunnally replied that is correct.

Commissioner Burt asked how many homes are affected by this?

Mr. Nunnally said when he asked that question, he was told that it was anywhere from 1,100 to 1,500 people.

Commissioner Burt said it would have to be treated as an existing plant, to which Mr. Nunnally replied that is correct.

Commissioner Burt asked where the existing plant is located?

Mr. Nunnally said he is unsure as to where the plant is located; he can find out.

Commissioner Gruber said there are plants located all over.

Mr. Levett said he owns a parcel on Meadow Road. When he bought it, the previous owner sold a small parcel near him and there is a plant there.

Commissioner Gruber said that is a pumping station, to which Mr. Levett replied that Commissioner Gruber is probably correct. Mr. Levett said sewer is brought into the station and pumped back to Fairhope. He could not get a lot of information as to where the sewer is going. He found out from some of his friends from the City of Fairhope that this has to be

done. There is no way the City of Fairhope can handle all of the sewage. Mr. Levett said this is what he is up against; he cannot fight this.

Commissioner Burt said there was a 10-year contract between BCSS and the City of Fairhope which expires shortly. This will leave 1,100 people wondering what to do about the sewer. He imagines BCSS was a good revenue source for the City of Fairhope. There was a rush from the City of Fairhope to expand its sewer lines and BCSS was already there; everyone worked together then. Commissioner Burt said now it seems, under a new Mayor, that the City of Fairhope is proceeding differently and it has the law on its side. Commissioner Burt asked if Mr. Levett has a septic tank.

From the audience, Mr. Levett said he has a couple of septic tanks on some of his properties and he was also on the sewer system.

MOTION BY COMMISSIONER CHARLES F. GRUBER, SECONDED BY COMMISSIONER FRANK BURT, JR., TO APPROVE LICENSE AGREEMENT #17003 PERMITTING BALDWIN COUNTY SEWER SERVICE, LLC TO INSTALL A 10" SEWER MAIN ON THE UNMAINTAINED RIGHT-OF-WAY OFF FERRY ROAD ON THE WEST SIDE OF FISH RIVER AND THE BOAT LAUNCH PARKING AREA OFF HONEY ROAD ON THE EAST SIDE OF FISH RIVER CONTINGENT UPON THE LICENSEE OBTAINING A US ARMY CORPS OF ENGINEERS PERMIT AND STATE LANDS UTILITY PERMIT.

Commissioner Burt said he does not see an alternative to what the 1,100 people can do. As far as the water is concerned, it is up to the Corps of Engineers. A public hearing will be held before the permit is granted by the Corps of Engineers.

Mr. Nunnally said he does not feel there will be a comment section on this during the permitting process.

Commissioner Burt said they either grant it or they do not.

Mr. Nunnally said BCSS will have to jump through the Corps' hoops and meet their rules and regulations.

Commissioner Burt said if it meets the regulations and rules, then it is automatically approved.

Mr. Nunnally said yes, it is very similar to what the Commission does for utility companies on the County's right-of-way.

Mr. Levett said when he met with the sewer company he was told they had the approval from the Corps of Engineers; maybe they do, maybe they do not. The State has granted the permit. He does not feel Corps of Engineers realizes or questions the history of BCSS or the spills that have happened in the past. Mr. Levett said this maybe something for someone to look into.

Chairman Elliott said it is important to note that this license request is used on the County's right-of-way. The Commission is under an obligation to allow utility companies to use the

right-of-way, contingent upon the company meeting the Commission's terms and specifications. Chairman Elliott said the Commission has very little weight to deny access to the right-of-way if the company meets the Commission's specifications. Commissioner Burt brought up a good point that there are 1,100 people there. With an administration change in the City of Fairhope, those homes are likely to be found without any way to dispose of the sewage at the expiration of the agreement. Chairman Elliott said this is the only plan that has been put forth. While it may not be ideal, he does not find this Commission to have the legal authority to prevent it. There is a real public need to move forward with this and make sure the County continues to serve the 1,100 people. Chairman Elliott said he shares the environmental concerns. He trusts the requirements put in place by the Highway Department for right-of-way use and those imposed by the Corps of Engineers and the State Lands Division will be sufficient to address any environmental concerns people may have.

Ayes:	3	Commissioners:	Frank Burt, Jr., Chris Elliott, Charles F. Gruber
No:	0	Commissioners:	(None)
Abstain:	0	Commissioners:	(None)
Absent:	1	Commissioners:	J. Tucker Dorsey

MOTION PASSED.

At this time, Commissioner Dorsey and Mr. Conner returned to the Chambers and to the meeting.

(J) - ADMINISTRATIVE REPORT

Ron Cink, County Administrator/Budget Director, said on Friday, March 10, 2017, there will be a swearing in ceremony for the two new Circuit Court Judges. A reception will be held in the Commission Chambers following the ceremony.

(K) - COUNTY ATTORNEY'S REPORT

David Conner, County Attorney, said there are a couple of items for discussion in an executive session. He does not feel any action will be needed following the executive session. If Chairman Elliott would like to adjourn the meeting from the executive session, he may do so.

Chairman Elliott recognized a representative from the Board of Education in the audience and said he appreciates the renewed and ongoing cooperation and cooperative spirit between the Board of Education and the Commission.

(O) - COMMISSIONERS COMMENTS

Commissioner Burt said today was a good meeting. It was a privilege to recognize the late former Commissioner Samuel Jenkins and his family and small businesses. Small businesses provide the major portions of jobs and start-up industries throughout the nation. Commissioner Burt said the small businesses need help now. Their access to funds are limited by Federal regulations and other things, but he hopes growth will continue. He has never seen the County like it is. He is pleased to know Live Oak Landing's RV sites are