



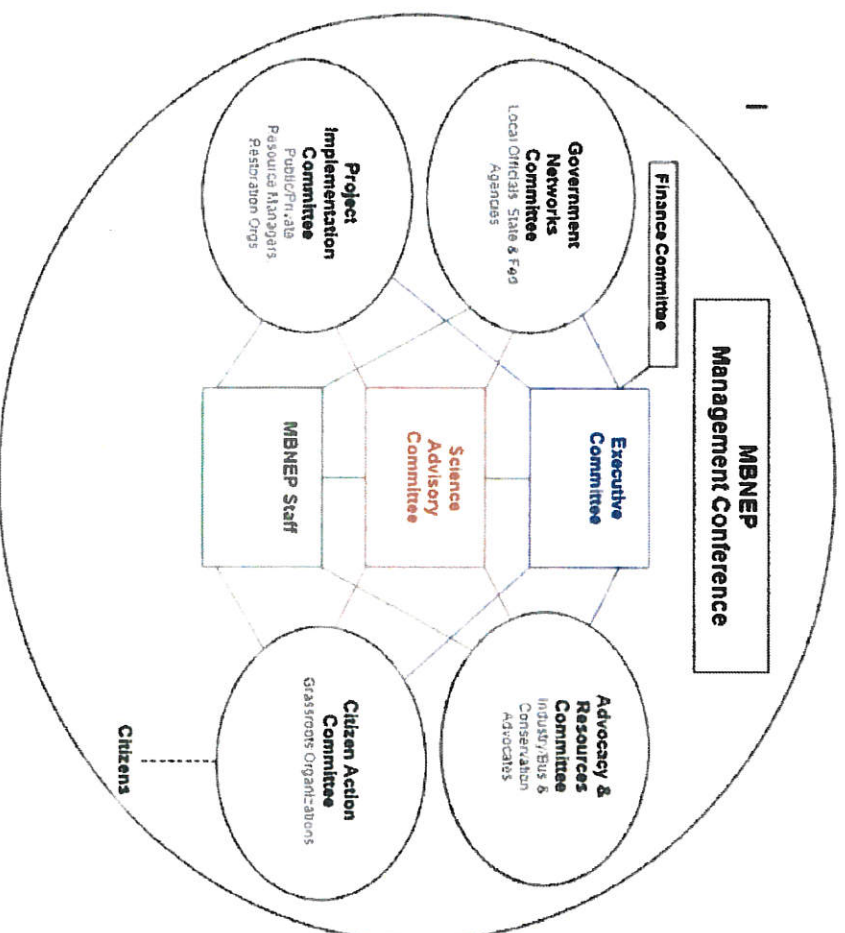
Appendix A

Public Education and Outreach

Local Partnerships



Mobile Bay National Estuary Program



A Division of the Dauphin Island Sea Lab

[The Landscape](#) [The Values](#) [The Issues](#) [The Watersheds](#) [Who We Are](#) [What We Do](#) [What We Monitor](#) [Library](#) [Events](#) [News](#)

News

[Latest Current Connection Newsletter is out](#)
[AGCRC releases Draft Multiyear Implementation Plan for 45-day public comment period](#)

[Mobile Premiere of "Flight of the Frigate Bird" at Ben May Public Library](#)

[Septic Tank Pump-Out Workshop](#)

[Mobile City Council Endorses Dog River Watershed Management Plan](#)

[For Immediate Release: MBNEP awarded \\$300,000 grant](#)

[\\$300,000 Award for Watershed Protection from U.S. Endowment for Forestry and Communities](#)

[Free Septic Tank Pump-Out Workshops for Resident Homeowners](#)

[read more...](#)



[Comprehensive Conservation & Management Plan 2013-2018](#)

[Workplans](#)

[Publications](#)

[Create A Clean Water Future](#)



[Executive Committee](#)

[Government Networks Committee](#)

[Business Resources Committee](#)

[Project Implementation Committee](#)

[Science Advisory Committee](#)

[Community Action Committee](#)

[Community Resources Committee](#)

[Finance Committee](#)



[D'Olive Watershed](#)

[Mon Louis Island/Delchamps Bayou](#)

[Fowl River Watershed](#)

[Bayou La Batre Watershed](#)

[Three Mile Creek Watershed](#)

[more...](#)



[Transformations - The Butterfly Effect Across the Alabama Coast](#)

[Low Impact Development \(LID\)](#)

[Three Mile Creek Trail Construction](#)

[Association of National Estuary Programs](#)

[Dispatches From the Field](#)

[PBS NewsHour: The Delta](#)

[The Path Towards Coastal Restoration](#)

2010-2018 © Mobile Bay National Estuary Program

[Site by Blue Fish](#)

A Division of the Dauphin Island Sea Lab

[The Landscape](#) [The Values](#) [The Issues](#) [The Watersheds](#) [Who We Are](#) [What We Do](#) [What We Monitor](#) [Library](#) [Events](#) [News](#)

[Home](#) » [Who We Are](#) » Here

Our History



Recognizing the importance of the Mobile Bay Estuary and the threats posed to its health by local growth and development, a team of investigators, led by the South Alabama Regional Planning Commission, developed a nomination package for Mobile Bay's inclusion in the National Estuary Program. Alabama Governor Fob James, Jr. then submitted the nomination package for consideration by the U. S. Environmental Protection Agency (EPA) in March, 1995. In September of the same year, EPA Administrator Carol Browner, having concurred with the justification provided within the nomination package, convened a Management Conference, and the Mobile Bay National Estuary Program (MBNEP) was created.

Administered through and funded by the EPA under provisions of the Clean Water Act (CWA) of 1987, the initial task for the MBNEP was the development of a Comprehensive Conservation Management Plan (CCMP) as a blueprint for conserving the estuary. Through the efforts of literally hundreds of participants and thousands of hours of volunteer time, our CCMP received final approval on April 22, 2002. Since that time, MBNEP has worked diligently to implement this plan and respond to emerging environmental challenges. All of the 28 NEPs recognized across the country under the CWA are similarly guided by their own CCMPs.

The mission of the MBNEP is to promote wise stewardship of the water quality characteristics and living resource base of the Mobile Bay estuarine system. We are a non-regulatory program, so we implement the CCMP by bringing together citizens; local, state, and federal government agencies; businesses and industries; conservation and environmental organizations; and academic institutions to meet the environmental challenges that face the unique and imperiled resources that characterize our coastal estuaries. We engage these groups in determining how to best treat the Bay, our associated coastal waters, and their surrounding watersheds to ensure their protection and conservation for our lifetimes and beyond.

2010-2018 © Mobile Bay National Estuary Program

[Site by Blue Fish](#)

Side Navigation

[Our History](#)

[Our Partners](#)

[Management Conference](#)

[Our Staff](#)

Contact Us

Name...
Email Address...
Phone Number...
Tell Us What You Think...

A Division of the Dauphin Island Sea Lab

[The Landscape](#) [The Values](#) [The Issues](#) [The Watersheds](#) [Who We Are](#) [What We Do](#) [What We Monitor](#) [Library](#) [Events](#) [News](#)

[Home](#) » [Who We Are](#) » Here

Our Partners

[Alabama Coastal Fishermen's Association](#)
[Alabama Department of Conservation and Natural Resources](#)
[Alabama Department of Public Health](#)
[Alabama Gulf Coast Convention and Visitors Bureau](#)
[Alabama Marine Resources Division](#)
[Alabama Rivers Alliance](#)
[Alabama State House of Representatives](#)
[Alabama State Port Authority](#)
[Auburn University Marine Extension & Research Center](#)
[Baldwin County](#)
[Baldwin County Environmental Advisory Board](#)
[Baldwin County Soil and Water Conservation District](#)
[Bon Secour River Protection Association](#)
[City of Bayou La Batre](#)
[City of Citronelle](#)
[City of Foley](#)
[City of Orange Beach](#)
[City of Robertsdale](#)
[City of Satsuma](#)
[Clean Water Future](#)
[Congressman Bradley Byrne](#)
[Dauphin Island Sea Lab](#)
[Eastern Shore Chamber of Commerce](#)
[Fairhope Environmental Advisory Board](#)
[Fowl River Area Civic Association](#)
[Friends of the Bon Secour National Wildlife Refuge](#)
[Grand Bay National Estuarine Research Reserve](#)
[Gulf Fisheries Management Council](#)
[Gulf Shores Convention and Visitors Bureau](#)
[Lake Forest Civic Association](#)
[Little Lagoon Preservation Society](#)
[Mobile Airport Authority](#)
[Mobile Area Water & Sewer System](#)
[Mobile Bay Kayak Fishing Association](#)
[Mobile County](#)
[Mobile County Soil and Water Conservation District](#)
[National Oceanic and Atmospheric Administration](#)
[Partners for Environmental Progress](#)
[Senator Richard Shelby](#)
[South Alabama Regional Planning Commission](#)
[Southeastern Wildlife Conservation Group](#)
[The City of Daphne](#)
[The City of Mobile](#)
[Thompson Engineering](#)
[Town of Elberta](#)
[Town of Magnolia Springs](#)
[Town of Silverhill](#)
[Toxicological & Environmental Associates, Inc](#)
[United States Environmental Protection Agency](#)
[United States House of Representatives](#)

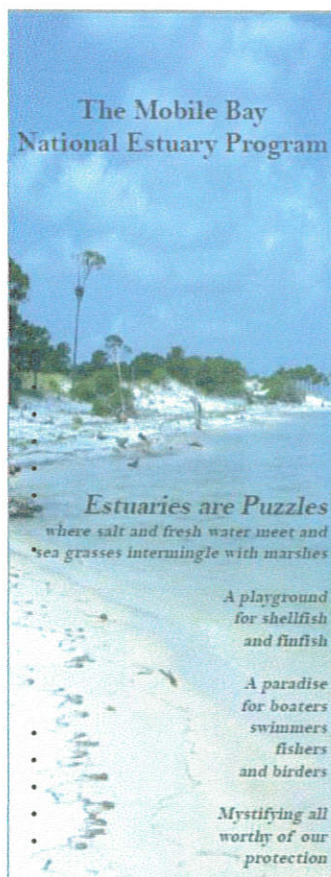
[Alabama Coastal Foundation](#)
[Alabama Department of Environmental Management](#)
[Alabama Department of Transportation](#)
[Alabama Gulf Coast Restore Council](#)
[Alabama Power](#)
[Alabama Senate](#)
[Alabama State Lands Division](#)
[Auburn University](#)
[Audubon Society](#)
[Baldwin County Commission](#)
[Baldwin County Planning and Zoning Department](#)
[Barry Vittor & Associates](#)
[City of Bay Minette](#)
[City of Chickasaw](#)
[City of Creola](#)
[City of Gulf Shores](#)
[City of Prichard](#)
[City of Saraland](#)
[City of Spanish Fort](#)
[Coastal America](#)
[Dauphin Island Bird Sanctuaries](#)
[Dog River Clear Water Revival](#)
[EPA Gulf of Mexico Program](#)
[Fort Morgan Civic Association](#)
[Friends of Perdido Bay](#)
[Friends of the Tensaw](#)
[Grassroots, Inc.](#)
[Gulf of Mexico Program](#)
[Junior League of Mobile](#)
[League of Women Voters](#)
[Mississippi-Alabama Sea Grant Consortium](#)
[Mobile Area Chamber of Commerce](#)
[Mobile Bay Canoe and Kayak Club](#)
[Mobile Baykeeper](#)
[Mobile County Commission](#)
[Mobile County Wildlife and Conservation Association](#)
[Organized Seafood Association](#)
[Portersville Bay Revival](#)
[Smart Coast, Inc](#)
[South Bay Communities Association](#)
[State of Alabama](#)
[The City of Fairhope](#)
[The Nature Conservancy](#)
[Town of Dauphin Island](#)
[Town of Loxley](#)
[Town of Perdido Beach](#)
[Town of Summerdale](#)
[United States Army Corps of Engineers](#)
[United States Fish & Wildlife Services](#)
[United States Senate](#)

A Division of the Dauphin Island Sea Lab

[The Landscape](#) [The Values](#) [The Issues](#) [The Watersheds](#) [Who We Are](#) [What We Do](#) [What We Monitor](#) [Library](#) [Events](#) [News](#)

[Home](#) » [Here](#)

What We Do



The Mobile Bay National Estuary Program is a voluntary, non-regulatory program bringing together citizens, government agencies, business/industry, conservation and environmental organizations, and academic institutions to promote a community and culturally-based approach to watershed management: working together to address the environmental issues outlined in the CCMP.

The Program works with scientists, public agencies, and experts to assess water quality, living resource abundance, the rate of habitat loss and conservation, and the ability of communities to grow while maintaining environmental health.

These assessments have aided in developing:

Expanded water quality monitoring
Protective measures for fish and wildlife
Local initiatives to help manage growth
Habitat Restoration priorities
Mapping data of submerged aquatic vegetation, habitat diversity, land uses and restoration activities
and many other projects and programs!

The Mobile Bay National Estuary Program acts as a catalyst for action by "putting the pieces together", that is, bringing a diverse array of stakeholders to the table to address many ongoing environmental issues including but not limited to:

Storm water Runoff
Wetlands Restoration
Hydrologic Impact of the
Causeway
Land use planning and practices

Side Navigation

[Comprehensive Conservation & Management Plan 2013-2018](#)

[Workplans](#)

[Accomplishments](#)

[K-12 Educational Resources](#)

[Bays & Bayous 2016](#)

Contact Us

Name...
Email Address...
Phone Number...
Tell Us What You Think...
Submit

2010-2018 © Mobile Bay National Estuary Program

[Site by Blue Fish](#)



**Mobile Bay National Estuary Program
Government Networks Committee Meeting
July 17, 2017
Original Oyster House
3733A Battleship Pkwy
Spanish Fort, AL 36527
7:30 am -9:00 am**

Agenda

- 1. Welcome & Introductions**
Commissioners Skip Gruber & Merceria Ludgood
- 2. Review and approval of minutes**
- 3. Old Business**
 - a. NFWF GEBF/RESTORE update – Patti Powell, ADCNR
- 4. New Business**
 - a. Habitat Restoration, Conservation, and Protection Plan for Coastal Alabama – Roberta Swann, MBNEP
 - b. State resources to aid communities in cleaning up illegal dumping – David Deyton, ADEM
 - c. Other/Announcements
- 5. Adjourn**



**Mobile Bay National Estuary Program
Government Networks Committee Meeting
Original Oyster House, Mobile AL
July 17, 2017**



The Mobile Bay National Estuary Program Government Networks Committee was established to bring State agencies and regional government administrators together with local officials of Mobile and Baldwin counties to more effectively communicate local needs/understand State agency functions and priorities. The goal of this committee is to articulate innovative ways to improve communications and management of our coastal environment.

In attendance:

Joseph Abston, Washington County Commission; David Baker, City of Semmes; Chris Blankenship, ADCNR; Napoleon Bracy, Jr., Alabama House of Representatives; Guy Busby, Baldwin County Legislative Delegation; Jeff Collier, Town of Dauphin Island; Carnes Craig, City of Chickasaw; Newton Cromer, City of Saraland; Randy Davis, Alabama House of Representatives; Terry Downey, City of Bayou La Batre; **Chris Elliot, Baldwin County Commission; Charles 'Skip' Gruber, Baldwin County Commission;** Kae Hamilton, Town of Perdido Beach; Dane Haygood, City of Daphne; Scott Hughes, ADEM; Diane Irby, City of Mobile; Thomas Jackson, Alabama House of Representatives; Matthew Lambert, City of Saraland; Merceria Ludgood, Mobile County Commission; Eliska Morgan, Alabama Gulf Coast Restore Council; Patti Powell, ADCNR State Lands Division; Chris Pringle, Alabama House of Representatives; William Puckett, Alabama Soil & Water Conservation Committee; Mike McMillan, City of Spanish Fort; Casey Rains, City of Spanish Fort; Elizabeth Roney, Bradley Byrne's Office; Harry Shiver, Alabama House of Representatives; Terry Williams, Town of Mount Vernon; Tom Williams, City of Satsuma; David Ludwig, City of Mobile; Evan Davis for Vince Calametti, ALDOT; Cheyenne West, ALDOT; Judy Haner, The Nature Conservancy

MBNEP Staff: Roberta Swann, Christian Miller, Rick Frederick, Paul Lammers, and Bethany Dickey

Takeaways

- Management Conference Committees are participating in a survey to prioritize habitat restoration goals for the future using CCMP community values.
- The Tensaw-Apalachee Watershed Plan has started to be scoped out and we will be reaching out to counties farther up that watershed.
- ADEM has programs and funding available to help remediate illegal dumping of waste and tires on private property and public right-of-ways

Commissioner Merceria Ludgood welcomed members and each gave a quick introduction. The meeting was called to order at 7:47 a.m. Commissioner Gruber moved to approve the minutes from the previous meeting, the motion was seconded by Chris Elliot, and the minutes were approved.

Next on the agenda, Patty Powell gave an update on Federal Restore Council funding. NRDA will have their annual public council meeting September 12th in Mobile. The Federal Council will have a work session in early September and she will give an update at the next GNC meeting. After changes in the administration, things are moving much smoother after the update from our last meeting. Eliska Morgan gave an update on the status of RESTORE & NFWF-GEBF funding. Governor Ivey has asked Joe

Bonner to act as her trustee on the Alabama Restore Council. A work session will happen soon. The latest approved NFWF projects are being evaluated with a time schedule of February through November. Please go to www.alabamacoastalrestoration.org to sign up for e-mail updates. Deadlines, release of a plan, meetings, and information on funding are all on the website.

Commissioner Ludgood then introduced Chris Blankenship as the new Acting Commissioner of ADCNR Marine Resources Division.

Next, Roberta Swann discussed a Coastal Habitat Restoration Tool (CART) for Alabama. Funding was received from NFWF. The first plan was completed in 2005 and evaluated projects to identify priority habitats and what value they provide in terms of ecosystem services. The Habitats Tool (MS-AL Habitats Database) created in 2009 displays all restoration projects that are completed, underway, or planned. The habitat conservation goals classified 10 coastal priority habitats, identified in the MBNEP Comprehensive Conservation Management Plan (freshwater wetlands, beaches & dunes, intertidal marshes & flats, longleaf pine habitats, submerged aquatic vegetation, oyster reefs, streams & rivers, riparian forests, pine savanna forests, and maritime forests). Judy Haner had attendees participate in a clicker survey on prioritizing habitat restoration goals for the future using CCMP community values (access, shorelines, fish & wildlife, heritage & culture, environmental resilience, and water quality). The final plan is scheduled to be complete by December 31, 2017.

Next on the agenda, David Deyton from ADEM gave a presentation on their Removals and Response Unit. This unit is responsible for the removal and proper disposal of Unauthorized Solid Waste Dumps (UAD) and Unauthorized Scrap Tire Accumulations (UASTA). Being primarily complaint driven, ADEM personnel investigate sites and obtain responsible party and property owner information. "Innocent landowners" remediation projects are awarded to private contractors through either the Solid Waste Fund or the Scrap Tire Fund. ADEM's Right of Way (ROW) Program assists counties by reimbursing expenses associated with the collection, management, and disposal of scrap tires found along the right-of-ways. 54 out of the 67 counties in Alabama are already participating in the ROW Program.

Commissioner Ludgood asked members to bring forward ideas before the next meeting of what experts could be brought in and relevant topics that can be discussed as well as things of concern in your community that need to be addressed. The Tensaw-Apalachee Watershed Plan has started to be scoped out and we will be reaching out to counties farther up that watershed. Christian then showed a short educational video on Low Impact Development (LID) that was just completed. Municipalities can use this video to educate their city council or planning commissions on LID practices. Another announcement was a stormwater workshop for engineers and planners for Mobile County and the City of Mobile. On November 1st and 2nd.

Meeting adjourned at 8:47 a.m.



Mobile Bay National Estuary Program: Project Implementation Committee

Tensaw Theater, 5 Rivers Delta Resource Center

Thursday, September 21, 2017, 1:00-4:00 p.m.

Agenda

- 1. Call to Order**
- 2. Approval of Minutes: June 8, 2017**
- 3. Project Implementation Reports**
 - 1) Joey Nunnally, Baldwin County**
 - Live Oak Landing Acquisition
 - 2) Kari Servold, Goodwyn Mills & Cawood**
 - Dog River Watershed Management Plan
 - 3) Mike Eubanks, Thompson Engineering**
 - Weeks Bay Watershed Management Plan
 - 4) Jacob Blandford, The Nature Conservancy**
 - Fowl River: Jordan Site
 - Fowl River: O'Brien Site
 - 5) Tina Sanchez, Mobile County**
 - Salte Aire
 - Bayfront
 - 6) Matthew Capps, City of Mobile**
 - Three Mile Creek/Twelve Mile Creek Projects
 - 7) Eliska Morgan, Alabama Department of Conservation and Natural Resources**
 - Dauphin Island Access
 - 8) Dan Bond, City of Gulf Shores**
 - Bon Secour Acquisition
 - 9) Ashley Campbell, City of Daphne**
 - Tiawasee: Park Drive
 - Tiawasee: Mont Clair
- 4. New Business**
 - Christian Miller, MBNEP - Wolf Bay Watershed Management Plan– RFQ
 - Meg Goecker, Moffat Nichol - Tensaw-Apalachee Watershed Management Plan
 - Judy Haner, The Nature Conservancy - Lightning Point Project
- 5. Announcements**
- 6. Schedule Next Meeting**
- 7. Adjourn**



**Mobile Bay National Estuary Program
Project Implementation Committee Meeting
Thursday, September 21, 2017
5 Rivers Delta Resource Center, Tensaw Theater**



Attendees:

Benji Elmore (Alabama Forestry Commission)
Richard Fields (Alabama Forestry Commission)
Melissa Pringle (Allen Engineering & Science)
Rob Howell (Anchor QEA)
Dave Armstrong (ADCNR, Fresh Water Fisheries)
Dan Bond (City of Gulf Shores)
Mary Kate Brown (The Nature Conservancy)
Evan Davis (ALDOT, Southwest Region)
Carl Ferraro (ADCNR, Coastal Section)
Judy Haner (The Nature Conservancy)
Patric Harper (U.S. Fish & Wildlife Service, Coastal Programs)
Dina Knight (The Nature Conservancy)
Casi Callaway (Mobile Baykeeper)
Brett Gaar (Volkert, Inc.)
Scott Phipps (Weeks Bay Reserve)
Joyce Nicholas (USDA-NRCS)
Shannon McGlynn (ADEM)
Matthew Capps (City of Mobile)
Tina Sanchez (Mobile County)
Eddie Kerr (Mobile County)
Joey Nunnally (Baldwin County Commission)
Katie Barnes (Birmingham Audubon)
Deanne Ingram (USFWS)
Jaime Miller (ADCNR, Marine Resources Division)
Chris Plymale (U.S. EPA Region 4)
Molly Martin (U.S. EPA Region 4)
Casey Rains (City of Spanish Fort)
Lee Walters (Goodwyn Mills & Cawood)
Meg Goecker (Moffatt Nichol)

Eliska Morgan (ADCNR)
Patti Powell (ADCNR)
Marlon Cook (Cook Hydrogeology)
Kari Servold (Goodwyn Mills Cawood)
Matthew Jones (Integrated Science & Engineering)
Cameron Morris (Dewberry)
Ashley Campbell (City of Daphne)
Steve O'Hearn (Thompson Engineering)
Bud McCrory (MAWSS)
Justin Casey (Ecology & Environment, Inc.)
Byron Hinchey (Amec Foster Wheeler)
Rhonda Bryars (Baldwin County SWCD)
John Peterson (Mott MacDonald)
Macy Taylor (ALDOT)
Rosemary Ginn Sawyer (City of Mobile)
Michael Barnett (Tetra Tech)
Steve Mathies (Stantec)
Loren Powers (ADPH-Baldwin County)
Frank Burt (Baldwin County Commission)
Jacob Blandford (The Nature Conservancy)
Justin Rigdon (ADEM)
Ken Leslie (Alabama Forestry Commission)
L.G. Adams (ADCNR, Lands Division/ Weeks Bay Reserve)
Celena Boykin (Baldwin County)
Mike Eubanks (Thompson Engineering)
Amy Newbold (EPA)
Sherry Allison (Allen Engineering & Science)
Scott Jackson (Ecology & Environment, Inc.)
Randy Shaneyfelt (ADEM, Mobile)
Sam St. John (Fowl River Area Civic Association)

MBNEP Staff: Roberta Swann, Christian Miller, Jason Kudulis, Paul Lammers, Bethany Dickey, and Jackie Wilson **Coastal Conservation Members:** Kevin Kidd, Shaila Fletcher, Eric Lucas Jr., and Jamarcus Talib

1. Call to Order

The meeting was called to order at 1:08 pm by Patric Harper. Attendees went through a round of self-introductions.

2. Approval of the Minutes

Mr. Harper asked for any deletions, additions, changes to the minutes from June 8, 2017. Hearing none, he called for a motion to approve the minutes. Carl Ferraro made the motion, which Brett Gaar seconded. The motion carried unanimously.

3. Project Implementation Reports

1) Joey Nunnally/Commissioner Frank Burt, Baldwin County

- Commissioner Burt presented photos, drone footage, and historical information on Live Oak Landing and its acquisition/restoration that began in 2011.

2) Kari Servold, Goodwyn Mills & Cawood

- The Dog River Watershed encompasses 93 square miles. Sewage overflow has affected its water quality. Urbanization is affecting stormwater runoff and habitat preservation. The Watershed Management Plan draft was opened in September for a public comment period.

3) Mike Eubanks, Thompson Engineering

- The Weeks Bay Watershed Management Plan was started in January 2016 and the report is being finalized now. The Watershed is 130,000 acres and includes 9 municipalities. Issues that have affected the water quality in the Watershed include: population growth/urban development, some agricultural practices, and stormwater runoff. The plan will identify projects that address nutrients, sediments, and the source of pathogens in the watershed.

4) Jacob Blandford, The Nature Conservancy

- Jacob presented updates on two (private owner) living shorelines projects on Fowl River. The focus of these projects was bulkheads that were failing. TNC worked with the manufacturer of the gabion baskets to come up with a design that uses gabion baskets of different heights that create a step-down that mimics the slope of a living shoreline, and then is anchored to the bulkhead. The second landowner did some dredging as well as the gabion baskets. The leftover dredge sediment was donated by the landowner to be relocated to the first site project to help with some shoreline degradation.

See attached presentation for before and after photos.

5) Tina Sanchez, Mobile County

- In 2015 the County was awarded a grant from NFWF to acquire the Salte Aire parcel. Goat Island was purchased about six months later. The last 10 months have been used to develop a restoration plan for the shoreline. The project will stabilize the shoreline and reestablish the tidal marsh. The recessed shoreline would be reestablished by placement of sediments borrowed from the Fowl River Channel dredged material disposal area. Project will move forward within the next year.
- The Bayfront Park project will provide public access improvements, marsh restoration, and habitat preservation. Phase I is the engineering and design phase and will be starting soon.

6) Matthew Capps, City of Mobile

- This project develops a continuous, 20-mile-long trail system along the banks of Three Mile Creek. This project allows the City of Mobile to link several ongoing trails, greenway, park

upgrades, and Complete Street initiatives. The “Greenway” will revitalize parks and promote exercise and healthy living, connect citizens to services and public amenities, and draw tourists and citizens for recreational use. Phase I of the Mobile Greenway involves the first one mile, connecting Tricentennial Park, Mobile Infirmary, USA Hospital, and the Health Department. Matthew showed several maps and diagrams on where the trails will run.

7) Eliska Morgan, Alabama Department of Conservation and Natural Resources

- Dauphin Island Access (Mid-Island Project): The project includes acquisition of three parcels (A, B, and C) that will offer public parking, restroom facilities, and boat launch. The project’s goals are improved public access, preservation of natural habitats for wildlife and beach habitats. *See attached maps.*

8) Dan Bond, City of Gulf Shores

- Bon Secour Acquisition: This project will protect and restore 836 acres consisting of 2 large tracts and 18 parcels. The lands are primarily wetlands – freshwater emergent, estuarine emergent or freshwater forested. The properties will be protected for conservation purposes, and a comprehensive management plan will be developed and implemented. Due diligence activities are underway- boundary surveys, title work, and environmental site assessments.

9) Ashley Campbell, City of Daphne

- Tiawasee: Park Drive and Mont Clair- addresses issues downstream from subdivisions: 900 linear feet in between Estates of Tiawasee and Lake Forest.

4. New Business

1) Christian Miller, MBNEP

- Wolf Bay Watershed Management Plan – RFQ
 - Pre-submittal conference was September 5th. The statement deadline has been extended to the last Friday in October. Issues that were discussed – water quality, access, land-use change over time, sea level rise. Minutes from the pre-submittal meeting will be posted to the MBNEP website soon. www.mobilebaynep.com

2) Meg Goecker, Moffatt Nichol

- Tensaw-Appalachian (MTA) Watershed Management Plan
 - The 10 sub-basins that make up the Watershed consists of 41% wetlands and 46% uplands. Almost 75% is in public ownership – Federal, Forever Wild, and State owned. Some issues found in this study – stormwater erosion, development pressures, and downstream watershed impacts. Stakeholders were asked what their major issues were – habitat conservation and management, hydrology, access, and monitoring. Task suggestions are – synthesize current science knowledge, engage landowners, and invasive species mapping.
 - The study has grouped the Watershed into 3 sub-watersheds. The NEP should start with the two side watersheds first, then discuss when to do the middle section. *See attached map.*

3) Judy Haner, The Nature Conservancy

- Lightning Point Update: There have been 7 proposals, 3 for interview, and the awarded firm will be announced soon. Project consists of parcel acquisitions around the mouth of the Bayou for protection, restoration, and enhancement of the shorelines.

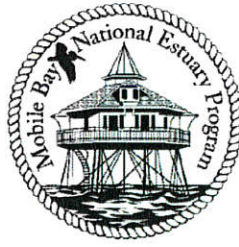
4. Announcements

Mobile Baykeeper Apple Snail Round-up event, October 14th. Massive One Mile Creek cleanup, October 28th. Rain barrel workshop at Daphne City Hall, September 23rd.

5. Schedule Next Meeting - January 2018

6. Adjourn

Mr. Harper asked for a motion to adjourn the meeting at 3:00 pm. Casi Calloway made the motion, which was seconded by Randy Shaneyfelt.



**Mobile Bay National Estuary Program Executive Committee Meeting
November 17, 2017 10:00 a.m. – 12:00 p.m.
Original Oyster House, Spanish Fort, AL**

AGENDA

Meeting Objectives

- a) Provide status of program activities

1. Introductions/Call to Order:
2. Approval of Minutes February 17, 2017
3. Director's Report
 - a) Budget vs Actual 9-30-2017
 - b) Habitat Mapping/Habitat Restoration Plan Status
 - c) Coastal Alabama Conservation Corps
 - d) Three Mile Creek Watershed Implementation
 - e) Engaging/Re-engaging New Partners
4. Committee Reports
 - a) Science Advisory
 - b) Project Implementation
 - c) Government Networks
 - d) Community Action
 - e) Business Resources
 - f) Community Resources
 - g) Finance Committee
5. Old Business
6. New Business
7. Other/Announcements
 - a) Gulf of Mexico Program Grant Award: Implementing a Comprehensive Strategy to Create Trash-Free Waters in the Three Mile Creek Watershed
8. Adjourn

Mobile Bay National Estuary Program Executive Committee Meeting
Original Oyster House Banquet Hall, Spanish Fort, AL
November 17, 2017, 10am-12pm.

Attendees – Mark Berte, Alabama Coastal Foundation; Dr. Ruth Carmichael, Dauphin Island Sea Lab; Jennifer Denson, Partners for Environmental Progress; Darrelyn Dunmore, Strategic Wealth Specialists; David England, Dauphin Island Sea Lab; Troy Ephriam; Leslie Gahagan, City of Foley; **Charles ‘Skip’ Gruber, Baldwin County Commission**; Patric Harper, U.S. Fish & Wildlife Service; Tammy Herrington, Conservation Alabama; Phillip Hinesley, ADCNR; Fred Leslie, ADEM; James Lyons, Alabama State Port Authority; Eliska Morgan, Alabama Gulf Coast Restore Council; Patti Powell, ADCNR State Lands Division; Dr. Susan Rees (Larry Parson-proxy), U.S Army Corps of Engineers; William Sisson (Bob Chappelle-proxy), Mobile Area Chamber of Commerce; Dr. LaDon Swann, MS-AL Sea Grant Consortium; Chris Thomas, U.S. EPA; Beth Thomas, Alabama Power Company

MBNEP Staff Present: *Roberta Swann, Tom Herder, Rick Frederick, Kelley Barfoot, Jason Kudulis, Paul Lammers, Bethany Dickey*

1. Co-Chair Chris Thomas called meeting to order at 10:08 a.m.
2. Approval of Minutes
 - Mr. Thomas asked for comments or revisions to the minutes from the July 17, 2017 meeting. Jimmy Lyons made a motion to approve and Mr. Chappelle seconded.
3. Director’s Report
 - **Alabama Restoration Planning:** the new Habitat Mapping is almost complete. Data acquisition and watershed plan inventory of projects are in progress. The first Technical Committee meeting is set for January.
 - **Trash Free Waters Program:** \$25,000 from EPA that will include installation of two “litter gitters” in the Three Mile Creek Watershed, two “litter gitters” in the Bon Secour Watershed, and expansion of Create a Clean Water Future website.
 - The Dauphin Island Sea Lab Foundation recognized Don Bates with the Marine Environmental Award Individual 2017 for his accomplishments with his “Litter Gitters”.
 - Three new videos have been released and available on the NEP website: Low Impact Development (LID) – Stormwater Doesn’t have to be a Headache, Three Mile Creek Trail Construction, and Association of National Estuary Programs. Visit www.mobilebaynep.com to view.
 - **NFWF Funding Amendment:** The watershed planning initiative has been amended to include activities to support these future restoration implementation activities: hydrologic modeling, Bon Secour, Wolf Bay, Dog River, Bayou La Batre, West Fowl River, and Tensaw Apalachee.
 - We are working on the scoping of the Economic Impact Analysis of the D’Olive Watershed.
4. Committee Reports (MBNEP Management Conference Co-Chairs)

Science Advisory Committee

Dr. Ruth Carmichael reported on the meeting from August 24, 2017. The Fowl River Marsh Study scope was presented to the SAC and unanimously approved. Land owner agreements have been signed and contracts are in the process of execution. The State of the Bay report should be released by September 2018.

Project Implementation Committee

Patric Harper and Paul Lammers reported on the meeting from September 21, 2017. The Dog River WMP is final, the Weeks Bay WMP will be out by the end of the year, and proposals for the Wolf Bay WMP are under review. The Highway 90 and Tiawasee stream restoration projects in the D'Olive Watershed have been completed. Mr. Lammers showed photos of Mon Louis Island and County Road 13 from the recent storms and how well the restorations have held up. An RFQ for the Twelve Mile Creek restoration will go out in the beginning of December.

Government Networks Committee

Commissioner Gruber gave the report on the Government Networks Committee meeting from November 17, 2017. A regulatory review across Mobile and Baldwin Counties is underway and will be used to develop a platform of changes to manage coastal resources. Miriam Boutwell with the City of Foley then gave a presentation on Plan Lower Alabama Now (P.L.A.N.). P.L.A.N. is a working group that has multiple meetings with stakeholders in the Weeks Bay Watershed. The goal of this group is to learn from other municipalities through guest speakers and address some of the common issues throughout the county.

Community Action Committee

Leslie Gahagan reported on the meeting from August 16, 2017, where members addressed strengths and frustrations with their volunteer monitoring activities. Coastal Alabama trainers have trained about 107 people and recertified around 12 monitors since July 2017. The Bon Secour monitoring program was established in June 2017. The Coastal Alabama Conservation Corps members monitored 5 sites in Three Mile Creek and Toulmins Spring Branch for seven weeks. A monitoring update was presented at the Alabama Water Resources Conference on September 7, 2017.

Business Resources Committee

Ms. Denson, Ms. Dunmore, and Mr. Frederick provided the report. MBNEP was awarded a \$488,711 U.S. EPA Gulf of Mexico Program Grant Award to implement a Comprehensive Trash Strategy in Three Mile Creek. Phase I includes: 10 "Litter Gitters" in Three Mile Creek, removal of legacy trash, partner with Mobile Baykeeper's SWAMP program at Vigor to provide volunteers for EPA's pilot trash assessment. Phase II includes: targeting businesses to implement more environmentally-friendly packaging, and one outreach event for Create a Clean Water Future.

Community Resources Committee

Mr. Berte and Ms. Herrington gave the report. The next CRC meeting will be November 29, 2017. Ms. Herrington proposed a 'strawman' process that was developed to suggest for the MBNEP to become the 'Review Committee' for the AGCRC submitted projects. There was a lot of feedback from the Executive Committee Members:

- Conflict of interest

- Review already currently being conducted by Volkert, Inc.
- Reputation of the MBNEP could be jeopardized
- Concern over the fact that other 'plans' exist and the 'strawman process' is only ensuring that the projects fit within the goals and objectives of the CCMP.
- Is this a process that the Executive Committee wants to take on and adopt?
- Is this a process that would benefit the AGCRC and would they take it into consideration when selecting projects for final funding?

5. Other / Announcements

- NRDA Trustee Council Annual Meeting will be held November 30, 2017.
- The MBNEP Annual Breakfast meeting is set for December 8, 2017.

Adjourned at 11:25 a.m.

A Division of the Dauphin Island Sea Lab

[The Landscape](#) [The Values](#) [The Issues](#) [The Watersheds](#) [Who We Are](#) [What We Do](#) [What We Monitor](#) [Library](#) [Events](#) [News](#)

[Home](#) » [The Watersheds](#) » Here

Weeks Bay Watershed



Latest News

The Weeks Bay Watershed Management Plan has been released.

[Weeks Bay Watershed Management Plan](#)

[Weeks Bay Watershed Management Plan Appendices](#)

[Fish River Watershed Assessment, Pre-Restoration Report-Marlon Cook, 2016](#)

Latest Uploads

[Meeting Information](#)

[Monitoring & Research Studies](#)

[Steering Committee List](#)

Weeks Bay Watershed Information

[The Landscape](#)

[The Community](#)

[The Planning](#)

[The Restoration](#)

About

A Watershed Management Plan is an essential first step in preserving water quality in a relatively pristine, tidally-influenced watershed and mitigating the impacts of future development pressures. The watershed planning process utilizes a stakeholder led process to characterize existing conditions, identify and prioritize problems, define management objectives, and develop and implement protection or remediation strategies as necessary.

Contact

For more information please contact:
Mobile Bay National Estuary Program
118 N. Royal St. Suite 601
Mobile, AL 36602
251-431-6409

Weeks Bay Watershed

[The Landscape](#)

[The Community](#)

[The Planning](#)

[The Restoration](#)

Other Watersheds

[Bayou La Batre Watershed](#)

[Bon Secour Watershed](#)

[Dauphin Island Watershed](#)

[Dog River Watershed](#)

[D'Olive Watershed](#)

[Eight Mile Creek Watershed](#)

[Fowl River Watershed](#)

[Mon Louis Island/Delchamps Bayou](#)

[Three Mile Creek Watershed](#)

[Tensaw Apalachee Watershed](#)

[Weeks Bay Watershed](#)

[West Fowl River Watershed](#)

[Wolf Bay Watershed](#)

Contact Us

Name...
Email Address...
Phone Number...
What are your suggestions for the Weeks Bay Watershed? ^
Submit

[Subscribe to our mailing list](#)

2010-2018 © Mobile Bay National Estuary Program
[Site by Blue Fish](#)

A Division of the Dauphin Island Sea Lab

[The Landscape](#) [The Values](#) [The Issues](#) [The Watersheds](#) [Who We Are](#) [What We Do](#) [What We Monitor](#) [Library](#) [Events](#) [News](#)

[Home](#) » [The Watersheds](#) » [Weeks Bay Watershed](#) » Here

The Planning

Contractor

Thompson Engineering has been awarded the contract to develop a Watershed Management Plan for the Weeks Bay watershed. This includes both the Fish River and Magnolia River watersheds. The Thompson Team has tremendous experience in the watershed, watershed planning, modeling, stakeholder consensus building, and realistic and scalable financing options. Bob Higgins (bob@rjhiggins.com) of Higgins & Associates is a consultant to Thompson for the Outreach portion of the project.

Project Timeline

1. Project Management Plan
2. Literature/Data Review and Gap Analysis
3. Data Gathering and Inventory
4. Watershed Characterization
5. Alternatives and Management Opportunities Development
6. Examination of Regulatory Framework
7. Evaluation of Financing Alternatives
8. Monitoring and Evaluation Plan Development
9. Draft Management Plan
10. Final Management Plan

Meeting Information

[Schedule](#)

- [August 16, 2017, Public Workshop Minutes](#)
- [August 16, 2017, Public Workshop Presentation](#)
- [July 25, 2017, Stakeholder Work Group Meeting #10](#)
- [April 5, 2017, Stakeholder Work Group Meeting #9](#)
- [January 18, 2017, Stakeholder Work Group Meeting #8](#)
- [November 16, 2016, Stakeholder Work Group Minutes](#)
 - [Wetlands in the Weeks Bay Watershed](#)
 - [Shoreline Assessment & Potential Effect of Climate Change](#)
- [September 14, 2016, Stakeholder Work Group](#)
- [July 20, 2016, Stakeholder Work Group](#)
- [May 18, 2016 - Stakeholder Work Group - Dr. Kalin Modeling presentation](#)
- [March 16, 2016 - Stakeholder Workshop](#)
- [March 2, 2016 - Stakeholder Workshop](#)
- [February 17, 2016 - Stakeholder Work Group](#)
- [February 3, 2016 - Stakeholder Work Group](#)

Request for Qualifications

[Request for Qualifications Revised 9-15-2015-CLOSED](#)
[Fish River Sign-in Sheet 9-15-2015-CLOSED](#)

Watershed Management Plan

[Weeks Bay Watershed Management Plan](#)
[Weeks Bay Watershed Management Plan Appendices](#)

[Subscribe to our mailing list](#)

Side Navigation

[Bayou La Batre Watershed](#)

[Bon Secour Watershed](#)

[Dauphin Island Watershed](#)

[Dog River Watershed](#)

[D'Olive Watershed](#)

[Eight Mile Creek Watershed](#)

[Fowl River Watershed](#)

[Mon Louis Island/Delchamps Bayou](#)

[Three Mile Creek Watershed](#)

[Tensaw Apalachee Watershed](#)

[Weeks Bay Watershed](#)

[The Landscape](#)

[The Community](#)

[The Planning](#)

[The Restoration](#)

[West Fowl River Watershed](#)

[Wolf Bay Watershed](#)

Contact Us

Name...
Email Address...
Phone Number...
Tell Us What You Think...
Submit

 Share

Menu

 Search



[More Announcements...](#)

Upcoming Events

- ▶ 05/30 - Tree Risk Assessment Qualification Workshop
- ▶ 05/31 - 4-H Ambassador Applications Close in 4HOnline
- ▶ 05/31 - Tree Risk Assessment Qualification Workshop
- ▶ 05/31 - Recreational Pond Management
- ▶ 06/01 - Tree Risk Assessment Qualification Workshop
- ▶ 06/02 - 4-H Citizenship Washington Focus

M
th
st
&
di
8
1:
1:

E
H
C
E
C
3:
B
S
B
M
A
3:
P
(2
9:
7
F
(2
9:
7:

► 06/02 - Horse Pasture Pro - Equine Field Day

► 06/03 - 4-H Citizneship Washington Focus

► 06/04 - 4-H Citizneship Washington Focus

► 06/04 - 4-H Summer Camp (8 Sessions)

F
L

S
S

Baldwin County News

Mountain Lions In Alabama?

AUBURN, Ala. – We have seen them in movies and on the internet, but can we find mountain lions in Alabama? Commonly found in western... [more](#)

Grower and Ag Professional Training Events (Updated Weekly)

Year-round ACES training programs open to the public Private Pesticide Applicator Training Classes (Alabama Pesticide Education Program) <http://www.aces.edu/anr/pesticidemgt/> Alabama Master Gardeners Program <http://mg.aces.edu/> Monthly extension... [more](#)



Wheat Disease Situation for mid-May

Weather patterns have gotten much warmer and drier over the past three weeks since the last report ... As... [more](#)

Blue Disease in Cotton

Blue disease, which is caused by the aphid transmitted virus cotton leafroll dwarf, was tentatively identified in cotton collected in Barbour and Henry Co in... [more](#)

Wheat Disease Situation

Weather patterns over the past month have been cooler than the historical average with average to below average rainfall totals [more](#)

Scab Risk in Wheat

The wheat scab risk for Baldwin and Mobile Counties is high as compared with the low risk for scab development for the remainder of Alabama... [more](#)

How will burndown herbicides work with low temperatures?

Some areas of Alabama have been experiencing temperatures in the 30's this last week and forecasters say that more cold weather is to come... [more](#)

Weeds: They are important to everyone! Here is why

No matter where I go, whenever a conversation strikes up between someone and myself and they ask what my occupation is and I say that... [more](#)

Prescribed fire: A Series to promote better forest management and therefore better wildlife management

Forestry, Wildlife and Natural Resource Management ... Prescribed fire has been a part of land management across most of... [more](#)

Bamboo: Benefit or Boogeyman?

Golden bamboo (*Phyllostachys aurea*), planted as an ornamental and historically for use as fishing poles, is a familiar sight spreading around old... [more](#)

Follow Us:



Copyright © 1997 - 2018 by the
Alabama Cooperative Extension System
Alabama A&M University and Auburn University
All Rights Reserved. – webmaster@aces.edu
Legal Disclaimer – Privacy Statement

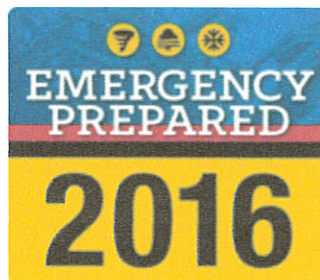
Bay Minette, AL

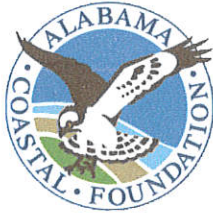
76 °F

**leavy Thunderstorm
and Rain**
at 03:55 AM



[Click for Forecast](#)





Alabama Coastal Foundation

Improving and protecting Alabama's coastal environment

DONATE

[Home](#)

[Cooperation](#)

[Education](#)

[Participation](#)

[Resources](#)

[Support](#)

[About Us](#)



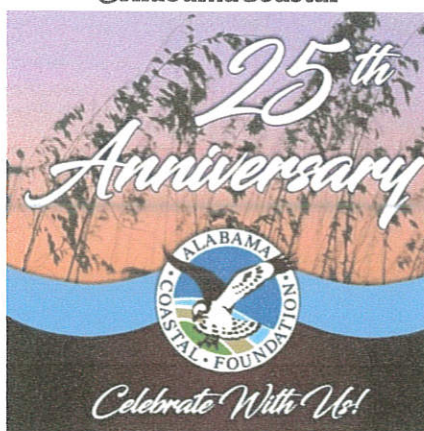
What's New?

Mobile Bay Estuary Corps Wetland Regulations and Compliance Workshops Oyster Shell Recycling Program

Livable Communities Coalition

Join the Coastal Alabama Livable Communities Coalition's campaign to promote bicycle safety! [Click here to watch our bicycle safety public service announcements](#). If you are interested in joining or learning more about the Coastal Alabama LCC, [please click here](#).

Follow us on Instagram **@AlabamaCoastal**



Calendar of Events

May 1: Check out the [May edition of the Osprey Outlook Newsletter](#).

May 23: AGCRC Public Meeting about Draft [Multiyear Implementation Plan, 6:00-8:00PM @ 5 Rivers Tensaw Theater](#).

May 28: ACF Office is closed for Memorial Day.

June 12: Green Drinks Fairhope from 5:00PM - 7:00PM @ Fairhope Brewing Company (914 Nichols Ave, Fairhope)

June 14: [Wetland Compliance Workshop, 8:30 AM - 12:15PM at Mobile Area Association of Realtors. Advanced Workshop goes until 2:30 p.m. \[Click here to register\]\(#\)](#).

June 20: [Green Drinks Mobile](#) from 5:00PM - 7:00PM @ Alchemy Tavern (7 South Joachim Street, Mobile).

June 27: [South Alabama Non-Profit Summit from 9:00AM-3:30PM @ USA. \[Click here to register\]\(#\)](#).

June 27: [Free Connect To Your Coast Outreach Event from 4:00PM-9:00PM @ Serda Brewing Company](#).

July 3-5: ACF Office is closed for 4th of July holiday.

July 19: [ACF Night @ the Hank! \[Click here to purchase your tickets\]\(#\)](#).

Partnerships

We are dedicated to partnering with businesses, governments, and other non-profits to maximize our results. Here are just a few of our partners:

Non-Profit Groups and Governmental Agencies

- AARP of Alabama
- Alabama Coastal Heritage Trust
- Alabama Cooperative Extension Service
- Alabama Department of Conservation & Natural Resources
- Alabama Department of Enviro. Management
- Alabama Marine Mammal Sighting Network
- Alabama River Alliance & Partner Organizations including Cahaba Riverkeeper, Coosa Riverkeeper, Black Warrior Riverkeeper, & Friends of Locust Fork River.
- Alabama Water Watch
- AmeriCorps VISTA
- Back Country Trail
- Baldwin County Trailblazers
- Boat People SOS
- Boy Scouts of America
- City Governments: Bayou La Batre, Daphne, Dauphin Island, Fairhope, Foley, Gulf Shores, Magnolia Springs, Mobile, Orange Beach, Prichard, & Spanish Fort
- Coastal Alabama Partnership
- Coastal Conservation Association of Alabama
- Coastal Land Trust
- Conservation Alabama
- County Governments: Mobile and Baldwin
- Delta Bike Project
- Dauphin Island Sea Lab
- Dog River Clearwater Revival
- Downtown Mobile Alliance
- Environmental Education Association of Alabama
- Environmental Law Institute
- Friends of Bon Secour National Wildlife Refuge
- Friends of the Mobile Tensaw Delta
- Girl Scouts of the USA
- Islands of Perdido Foundation
- Keep Mobile Beautiful
- League of Women's Voters
- Legacy, Partners for Environmental Education
- Mississippi-Alabama Sea Grant Consortium
- Mobilians on Bikes
- Mobile Bay Audubon Society

Business, Industry, and Higher Education

- A & M Peanut Shop
- Accents For Windows
- Adams IP
- Aerostar
- Alabama Gulf Seafood
- Allen, Allen & Foster
- American Sign & Advertising Company
- Bay Gourmet Catering Company
- Bay Radiology
- Bender Realty
- Bluegill Restaurant
- Bon Secour Fisheries
- Burns, Cunningham & Mackey
- Cabo Coastal Cantina
- Catherine Hall Designs
- Cooper Restaurants/Felix's Fish Camp
- Crowder Gulf
- Easter Shore Cycle
- EcoSolutions
- Ed's Seafood Shed
- Daphne Family Practice
- Georgia Roussos Catering
- Goodwyn Mills Cawood
- Gulf Adventure Center
- Gulf Chrysler
- Gwin's Printing
- Hand Arendall
- Hargrove Engineers
- Higher Ed: Auburn University; Columbia Southern University; Spring Hill College; University of Birmingham in Alabama; University of Alabama; & University of South Alabama
- Holcim, Inc.
- Laps on the Causeway
- Logical Computer Solutions
- Louis Berger Group
- Maynard Cooper and Gale
- McCarron Insurance
- Naman's Catering
- Panini Pete's
- Pro Cycle and Triathlon
- Regions Bank
- Schlinkert Sports Associates
- Sun Plans
- Thames Batre
- The Hampton Inn- Fairhope
- The Hangout
- The Lighthouse Restaurant
- Thompson Engineering
- Tonsmeire Properties

- Mobile Bay National Estuary Program
- Mobile Bay Sierra Club
- Mobile Baykeeper
- Mobile Botanical Gardens
- Mobile Co. Wildlife & Conservation Association
- National Fish and Wildlife Foundation
- Ocean Conservancy
- Ocean Foundation
- Partners for Environmental Progress
- Project CATE Foundation
- Team Share the Road
- The Good Life Foundation
- The Nature Conservancy
- U.S. Fish and Wildlife Service
- U.S. Green Building Council
- Weeks Bay Foundation
- Weeks Bay Research Reserve
- Wolf Bay Watershed Watch
- Youth Leadership Mobile
- Utilities: Alabama Power Company; Baldwin County Sewer; Daphne Utilities; Mobile Alabama Water and Sewage Systems; Mobile Gas; & Riviera Utilities
- Watershed
- White-Spinner Construction
- World Omni Financial Corporation

[Home](#) [Policy Board & Advisory Committees](#) [Documents](#) [Videos](#) [Interactive Map](#)

You are here: [Home](#)

PUBLIC NOTICES

What's coming down the pike? Find out right here! ...

[Continue Reading...](#)



LONG RANGE PLAN



The Long Range Transportation Plan (LRTP) is the instrument for coordinating the metropolitan long range transportation planning for the ...

SHORT RANGE PLAN



The Transportation Improvement Program (TIP) is a document which provides a list of projects to be initiated within a four year period. The ...

OTHER PLANNING DOCUMENTS



The MPO is charged with preparing numerous other planning documents including, but not limited to, the

[Read More...](#)[Read More...](#)

documents listed below.
Completed ...

[Read More...](#)

Public Input Opportunity – Transportation Survey

[Click here to complete the transportation survey](#)

How can I get involved?

Sign up for our newsletter to learn how you can be involved in the MPO!

[Sign Up Now!](#)

HIGHWAYS AND ROADWAYS



Want to learn more about projects and funding issues impacting your area? The links below will provide you with the information you need. ...

[Read More...](#)

PUBLIC TRANSIT



PUBLIC
TRANSPORTATION
SURVEY - Click here to complete the survey Is public transit available in your neighborhood? In ...

[Read More...](#)

BICYCLE AND PEDESTRIAN



Click here to view the 2014 Bicycle and Pedestrian Transportation Concept Traditionally, bicycle and pedestrian planning has catered ...

[Read More...](#)

CONTACT US:

Address:

Baldwin County Satellite
Courthouse
1100 Fairhope Ave
Fairhope, AL 36532

Phone:

(251) 990-4640

Email:

coordinator@easternshore
mpo.org

SEARCH

SEARCH THIS WEBSITE ...

**DISCRIMINATION –
TITLE VI COMPLAINTS**

[Click here to view complaint
procedures and complaint
forms](#)

[Haga clic aquí para ver los
procedimientos de queja y
hojas de reclamaciones](#)

**NEED LANGUAGE
ASSISTANCE?**

[Haga clic aquí para obtener
asistencia lingüística gratuita](#)

[Clique aqui para obter
assistência linguagem livre](#)

[点击这里免费语言协助](#)

[คลิกที่นี่เพื่อขอความช่วยเหลือ
ภาษาฟรี](#)

TRANSLATE

Select Language ▼

COPYRIGHT 2014 EASTERN SHORE MPO · LOG IN

Eastern Shore MPO

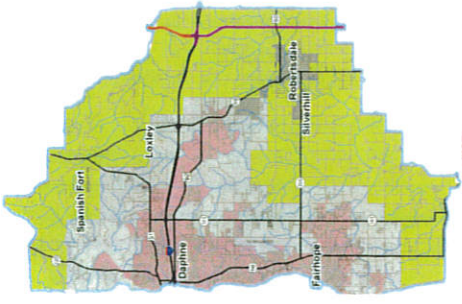
ESMPO Encourages All To Become Involved

We pledge that public participation is solicited without regard to race, color, national origin, sex, age, religion, disability or family status. Persons who require special accommodations under the Americans with Disabilities Act or those requiring language translation services should contact the Eastern Shore MPO at 251-990-4643 or 251-990-4640.

Asistencia de idiomas está disponible poniéndose en contacto con personal de la MPO en coordinator@easternshorempo.org

Eastern Shore Metropolitan Planning Organization
1100 Fairhope Avenue
Fairhope, Alabama 36532
www.easternshorempo.org
Phone: 251-990-4640; 251-990-4643
E-mail: coordinator@easternshorempo.org

Eastern Shore Metropolitan Planning Organization
1100 Fairhope Avenue
Fairhope, Alabama 36532
www.easternshorempo.org



Small Urbanized Area
Smoothed Urban Area
MPO Planning Area

Eastern Shore Metropolitan Planning Organization
(ESMPO)
A TRANSPORTATION PLANNING ORGANIZATION

Primary Tasks of an MPO

Involve the Public

Encourage community involvement during the transportation planning process.

What and Why an MPO?

Transportation Planning includes all modes of transportation, including vehicular, pedestrian and bicycle. The MPO is established and funded through the Federal Highway Administration (FHWA).

MPO's are established once an area reaches 50,000 in population. The Eastern Shore MPO was formed following the 2010 Census.

Establish and Manage a Fair and Impartial Transportation Process

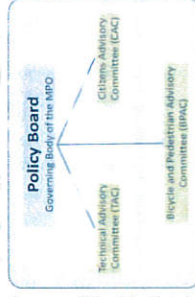
Ensure existing and future expenditures for transportation projects and programs are based on a continuing, cooperative, and comprehensive planning process. We do this by taking advice from advisory boards (see picture to right), soliciting input through open meetings, disbursement of mailers to underserved populations, arranging open public comment periods, and by ESMPO personnel being available to the public.

Prepare Planning Documents for Metropolitan Planning Area (MPA)

The ESMPO compiles primary planning documents including: The Unified Planning Work Program (MPO Planning Budget), the Long Range Transportation Plan (20 year transportation plan), the Transportation Improvement Plan, (also known as the TIP, a four year transportation plan); the Public Participation Plan (how the public can be involved) and the Bicycle and Pedestrian Concept.

About the ESMPO

The Eastern Shore Metropolitan Planning Organization, also known as the ESMPO, is a transportation planning organization comprised of Member Governments along the Eastern Shore of Baldwin County. These member governments include the City of Daphne, Fairhope, and Spanish Fort; the Town of Loxley and land areas of Baldwin County in between and near these member communities (see map on front).



Contact Us!

Sarah Hart Sladek, ESMPO Coordinator, shart@baldwincountyal.gov
Jennifer Fidler, ESMPO Tech, jennifer.fidler@baldwincountyal.gov

Visit our Website: www.easternshorempo.org

Like us on Facebook

Eastern Shore
MPO



A Guide to Local Traffic Improvements

ITS, Diverging Diamond & Roundabouts



ESMPO - A Federally Funded
Transportation Planning Organization

Intelligent Transportation Systems (ITS)

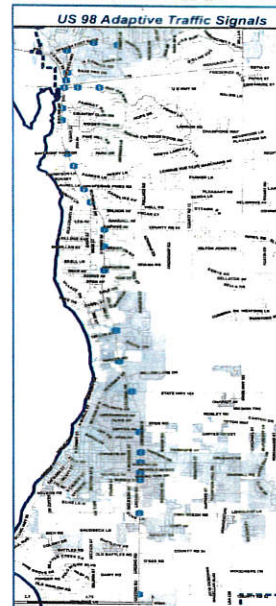
Coming Soon...Adaptive Traffic Signal!

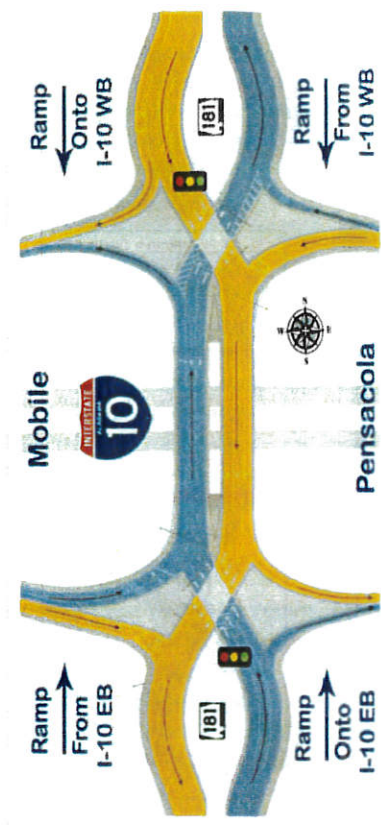
The ITS system is a SCOOT system – The Software and Hardware collects and uses real-time data to adjust traffic signal timing to improve thru-time.

- ITS builds roadway capacity without adding additional lanes.
- Signals are connected to each other and to the system using fiberoptic network.
- Detection includes wireless sensors and traffic cameras.
- Servers and camera feed is housed at the ALDOT Traffic Management Center in Mobile.
- The SCOOT system can improve capacity from 10%-50%
- We will see gradual improvements as the system is online and collecting data. The longer it is online, the better it will work (to a certain threshold).
- The US 98 system is expected to be fully online and operational Summer 2018 (June).
- Side streets may experience longer wait times at signals (US 98 will be a priority).
- The Adaptive Signal project Covers 28 Intersections – From Westminster Blvd. in Spanish Fort To CR 32 in Fairhope.

The US 98 Adaptive Traffic Signal project is a cooperative effort between: ESMPO, ALDOT, City of Fairhope, City of Daphne, City of Spanish Fort, and the Baldwin County Commission.

ALDOT's Traffic Management Center - Mobile





Diverging Diamond Intersections (DDI)

A DDI moves more traffic and reduces congestion better than a conventional interchange. Dangerous left hand turns across free-flowing traffic are eliminated on exits from SR-181 onto I-10 resulting in more efficient traffic flow and fewer accidents. DDI's have fewer conflict points. While there are 26 possible points of conflict in a conventional interchange, there are only 14 in a DDI, and they are spread throughout the interchange. DDI's have better visibility because they eliminate cross-traffic turns. Data on existing DDI's indicate a 60 percent reduction of collisions over conventional interchanges. Crashes that may occur are generally of lower severity than crashes observed in conventional interchanges.

How to Navigate a DDI

Motorists on SR-181 will proceed through the first traffic signal and follow their lane to the opposite side of the road. Traffic accessing I-10 will turn left on to the ramp. Through traffic will continue to the second traffic signal and follow their lane back to the right side of the road.

Traffic on I-10 will access exiting ramps to enter SR-181.

For more information:
http://rp.dot.state.al.us/I10_SR_181/

Roundabouts

A roundabout is a type of circular intersection with yield control of entering traffic, islands on the approaches, and appropriate roadway curvature to reduce vehicle speeds.

Modern roundabouts are different from rotaries and other traffic circles. For example, roundabouts are typically smaller than the large, high-speed rotaries still in use in some parts of the country. In addition, roundabouts are typically larger than neighborhood traffic circles used to calm traffic. A roundabout has these characteristics:

- Improve safety
- More than 90% reduction in fatalities*
- 76% reduction in injuries**
- 35% reduction in all crashes**
- Slower speeds are generally safer for pedestrians
- Reduce congestion
- Efficient during both peak hours and other times
- Typically less delay
- Reduce pollution and fuel use
- Fewer stops and hard accelerations, less time idling
- Save money
- Often no signal equipment to install, power, and maintain
- Smaller roundabouts may require less right-of-way than traditional intersections
- Often less pavement needed
- Complement other common community values
- Quieter operation
- Functional and aesthetically pleasing (Credit-FHWA)



Compared to other types of intersections, roundabouts have demonstrated safety and other noted benefits.



Traffic Roundabout in Fairhope, inset depicts an aerial view at night.

Also See: Visit Coastal Alabama • Build The I-10
Bridge • Coastal PAC

Enter search term

Search



OVERVIEW

LEADERSHIP

NEWS & EVENTS

PARTNER PROGRAMS

CONTACT



Vision, direction and action for the future of Baldwin and Mobile Counties

Coastal Alabama Partnership functions as both a force and a resource for our region. The scope of our effort exceeds a single community. We leverage the strength of every area of our two counties to focus on what is important for Coastal Alabama.

BACKGROUND

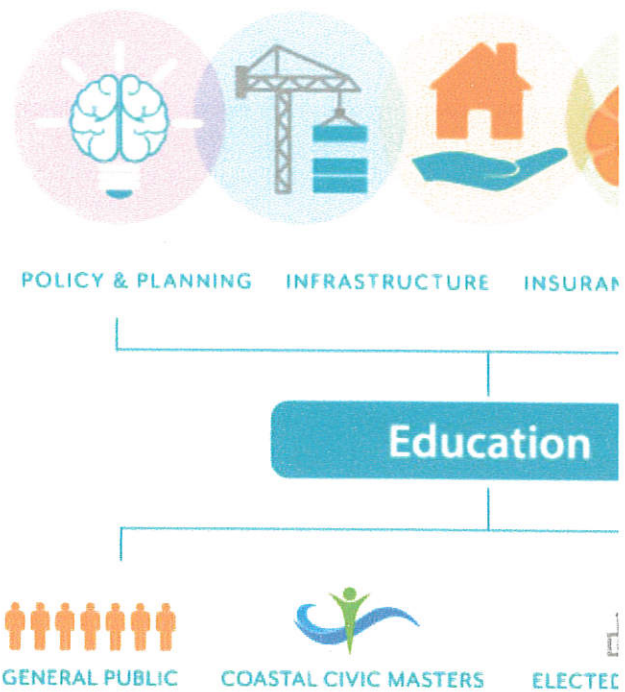
Coastal Alabama Partnership was conceived when key community leaders recognized the need for a standing organization to bridge the various entities in our two counties. Together we work in concert toward the priorities that will ensure our unparalleled quality of life.

MISSION

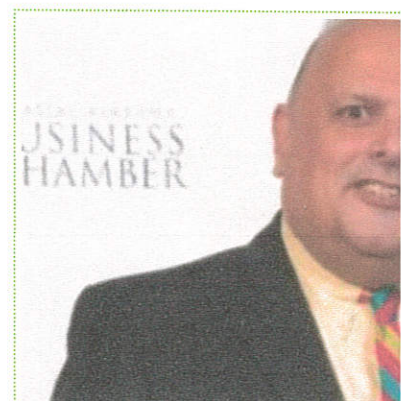
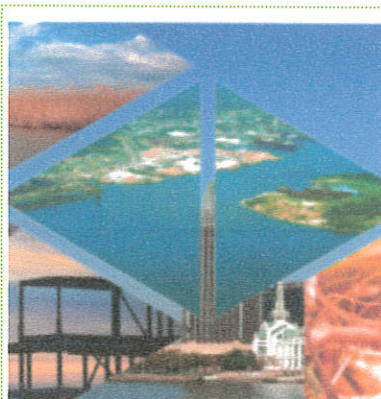
Coastal Alabama Partnership's mission is to enable and unify business and political leadership in their pursuits of improving our quality of life by collaborating on improving infrastructure, education, and governmental services.

VISION

Coastal Alabama Partnership's vision is for Coastal Alabama to become a globally competitive destination recognized around the world as THE place to work, live, and play, because of the unique quality of life found in our region.



Latest News and Events





Coastal Leaders Travel to Montgomery

For the fourth year, Coastal Alabama Partnership hosted a trip to Montgomery to meet with State leadership regarding issues important to our region. On January ... [Read More »](#)



CAP Releases 2018 Legislative Agenda

Coastal Alabama Partnership's 2018 Regional Legislative Agenda supports the efforts of the nine economic development entities in Coastal Alabama representing over 4,700 businesses and nearly 150,000 employees ...

[Read More »](#)



Coastal Alabama Loses a Leader

Coastal Alabama lost a leader this week. Ed Rodriguez, CEO and President of the Coastal Alabama Business Chamber, passed away last Thursday. Ed was a ... [Read More »](#)

251-436-8822 • 1 South Royal Street, 2nd Floor • P.O. Box 881 • Mobile, AL 36601 • contact@coastalalabama.org

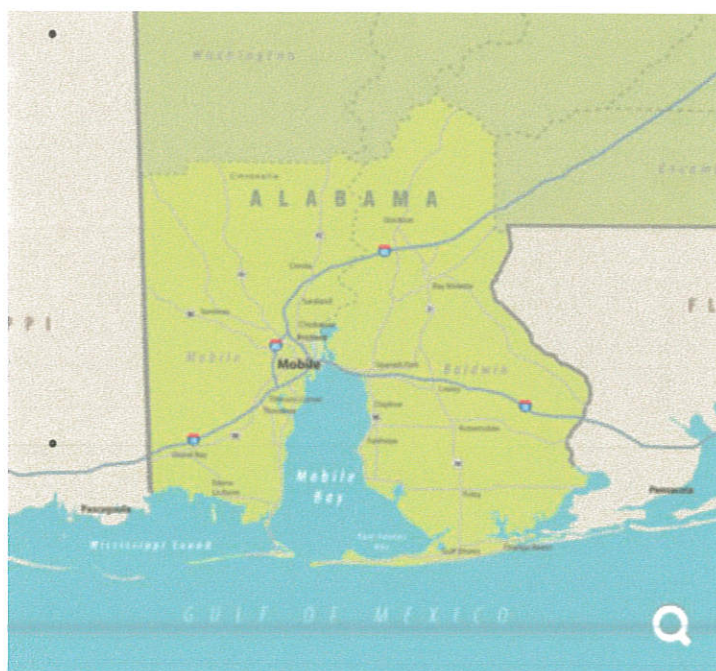
© Copyright 2017 Coastal Alabama Partnership / Coastal Alabama Partnership is a 501c3 non-profit organization.

Also See: Visit Coastal Alabama • Build The I-10
Bridge • Coastal PAC

[OVERVIEW](#)[LEADERSHIP](#)[NEWS & EVENTS](#)[PARTNER PROGRAMS](#)[CONTACT](#)

Overview / About Us

While Coastal Alabama Partnership exists to provide vision, direction and action for our region, it might be helpful to clarify what we are not.



We are not a chamber of commerce, but many of our volunteers are part of local chambers of commerce.

We are not an economic development commission, although we work with

municipalities to identify economic opportunities and bring them to our region.

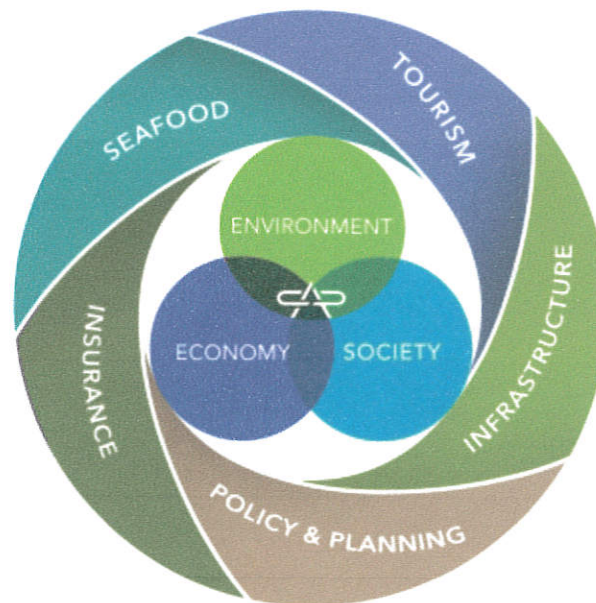
- **We are not a tourism development council,** yet our board includes members of those organizations and, in fact, we want to see tourism flourish and grow throughout our region.
- **We are not a body of elected officials.** We're a resource to our municipal leaders to help them coordinate and implement a strategic plan for the region.
- **We are not a replacement for any organization,** past or present.

Simply put, Coastal Alabama Partnership is a point of contact for getting things done across the counties that border Alabama's Gulf Coast. We make it possible for individuals and entities to work together to achieve major initiatives that will help our region move forward, spurring smart growth while maintaining an enviable quality of life.

The Coastal Alabama Partnership has identified several areas of focus. Here are some of our key initiatives.

Policy & Planning Initiative

We're partnering with a coalition of regional stakeholders to develop and implement a Strategic Regional Plan. As part of this initiative, our [2018 Legislative Agenda](#) focuses on important regional issues.



Insurance Initiative

We're striving to identify the full scope of the insurance crisis along the Gulf Coast. We seek solutions that will lower insurance premiums, improve building codes and encourage fortification programs for existing homeowners. We also want to market the region to insurance companies as an investment, not a liability.

Tourism Initiative

We're teaming up with the region's tourism authorities to brand and promote Coastal Alabama as a regional tourism destination for national and international markets.

Seafood Initiative

To ensure the survival, growth and prosperity of one of our region's most valuable industries, we're working with the private sector to improve operating and processing capacities. We will advocate for the protection and promotion of Gulf seafood.

Infrastructure Initiative

We actively partner with efforts to identify and seek funding to build the infrastructure needed for our region to be more efficient and attractive to businesses and investors.

251-436-8822 • 1 South Royal Street, 2nd Floor • P.O. Box 881 • Mobile, AL 36601 •
contact@coastalalabama.org

© Copyright 2017 Coastal Alabama Partnership / Coastal Alabama Partnership is a 501c3 non-profit organization.

Also See: Visit Coastal Alabama • Build The I-10
Bridge • Coastal PAC

Enter search term Search



OVERVIEW

LEADERSHIP

NEWS & EVENTS

PARTNER PROGRAMS

CONTACT

Partner Programs

Coastal Alabama Partnership works with many regional organizations to further our shared missions. Below are a few of our partners with whom we work most closely.

FORTIFIED

FORTIFIED is the new normal in construction and Alabama leads the nation in this innovative approach to strengthening residential housing infrastructure. The FORTIFIED Home™ program is a national construction standard based on 20 years of scientific testing and research. The building method strengthens and protects new and existing homes from damage caused by hurricanes, high wind, hail and thunderstorms. In Alabama and Mississippi, homeowners who build or re-roof to the standard can save up to 50 percent on their wind insurance premiums.



A program of the Insurance
Institute for Business & Home Safety

Developed by the [Insurance Institute for Business and Home Safety \(IBHS\)](http://www.insuranceinstitute.org), FORTIFIED utilizes third-party "Evaluators" to ensure homes are built to the highest standards. These independent inspectors gather vast amounts of information about each home and document the products and methods used to construct the building. Once work is complete, the Evaluator sends the documentation to engineers at IBHS for verification and final designation as a FORTIFIED home. FORTIFIED applies a building block approach with multiple certification levels of

Bronze, Silver and Gold, starting with the roof as the most important component of any building.

Visit www.smarthomeamerica.org for more information or to build FORTIFIED today.

- [Find a FORTIFIED contractor](#)
- [Find a FORTIFIED Evaluator™](#)

The FORTIFIED Home program is growing thanks to the work of Smart Home America. Please contact Julie Shiyu-Woodard at julie@smarthomeamerica.org or (855) 742-7233 ext.1 with any questions.

Create a Clean Water Future

Create a Clean Water Future is a public service campaign to help Alabama residents learn more about stormwater runoff and its impacts; increase demand for stormwater management programs; and provide tools that empower individuals and communities to reduce polluted runoff in our

waterways. The campaign was developed to address limitations of local governments to fully adopt stormwater management programs and a need to help Alabama residents understand the link between reducing polluted runoff and the preservation of a unique way of life built on Alabama's waterways. By joining the Create a Clean Water Future campaign, you are helping protect the Alabama all of us want to pass on to future generations. Visit www.cleanwaterfuture.com for more information.



Create a Clean Water Future Campaign is facilitated by the Mobile Bay National Estuary Program along with its partners. Please contact Rick

Frederick at rfrederick@mobilebaynep.com or (251) 380-7941 with any questions.

Delta Roundtable

The Mobile-Tensaw River Delta is a natural wonder treasured by locals and visitors alike. Many are interested in ensuring the protection of its unique wilderness, biodiversity and waterways along with expanding upon its economic value. Yet, the topic of its conservation has divided the region over the years in many ways.



In an attempt to encourage consensus about the future care of the Delta, CAP, in partnership with the Delta Working Group and Dauphin Island Sea Lab (DISL), created the Delta Roundtable in June 2014. The roundtable consists of roughly 40 diverse stakeholders interested in the well-being and future of the Delta. Please see the archives below for meeting minutes and updates on the roundtable's activities.

[Click here to access Members-Only Page](#)

The Delta Roundtable is facilitated by the Delta Working Group and Coastal Alabama Partnership. Please contact Mary Mullins (mmullins@mpactpublicaffairs.com) or Wiley Blankenship (wiley@coastalalabama.org) with any questions.

Regional Tourism Council



The Regional Tourism Council (RTC) was formed in 2013 in an effort to work together to promote tourism regionally. The council is comprised of eight destination marketing organizations in Mobile and Baldwin counties that are funded by lodging tax. The founding entities of the

RTC are Gulf Shores and Orange Beach Tourism, Visit Mobile, Coastal Alabama Business Chamber, South Baldwin County Chamber of Commerce, South Mobile County Tourism Authority, City of Foley, North Baldwin Chamber of Commerce, and the Eastern Shore Chamber of Commerce. This is the first time the eight tourism entities have agreed to formally work together for the good of the region.

Since its creation, the council has identified objectives to better tourism opportunities and promotion for our region. These include:

- Promote the entire region as a travel destination;
- Create a regional brand that identifies diverse attractions along the Gulf Coast;
- Advocate for improved infrastructure to link the communities and attractions for easier travel;
- Identify voids in events and activities and ways to extend the tourism season beyond the typical Memorial-to-Labor Day period.

In order to promote this incredible destination Coastal Alabama Partnership (CAP) and the RTC has collaborated to create a [regional tourism website](#). The development of this website is truly a historic task, as it is the first time Coastal Alabama has put our assets together as one. The site will provide you with a one-stop-shop of information on tourism opportunities available in our region, and it shows the world our uniqueness and the diversity of our area as a whole. [Click here](#) to learn more about tourism opportunities in Coastal Alabama.

The RTC is facilitated by Coastal Alabama Partnership. Please contact Wiley Blankenship (wiley@coastalalabama.org) with any questions.

Build the I-10 Bridge Coalition

Since the late 1990s, Mobile citizens and community leaders have advocated for a bridge over the Mobile River and widening the I-10 Bayway



to alleviate traffic through the Wallace Tunnel on I-10.

In 2011, the Build the Bridge I-10 Coalition was formed by the Mobile Area Chamber of Commerce to seek community support for a new bridge and widening of the I-10 Bayway from four to six lanes. In July 2014, the Coastal Alabama Partnership (CAP) joined the effort to cultivate regional support for the project by reaching out to key constituents in Texas, Louisiana, Mississippi, northern Alabama and Florida.

The Coalition has worked diligently with the maritime community, elected officials and local business and industry representatives to determine the best location with the least negative impact on the regional business community and environment.

The Build the I-10 Bridge Coalition consists of many partner members, including representatives from the organizations below, Congressman Bradley Byrne and our chairmen, Mike Lee and Bill Seifert.

In 2014, the coalition partnered with CAP to develop a regional website to educate, promote and advocate the need for development of I-10 Bridge: www.buildthei10bridge.com. Please visit this website to receive latest news, analyses, and activities regarding the bridge project.

The Build the I-10 Bridge Coalition is facilitated by The Mobile Area Chamber of Commerce and Coastal Alabama Partnership. Please contact Kellie Hope (KHope@mobilechamber.com) or Wiley Blankenship (wiley@coastalalabama.org) with any questions.

251-436-8822 • 1 South Royal Street, 2nd Floor • P.O. Box 881 • Mobile, AL 36601 •
contact@coastalalabama.org

© Copyright 2017 Coastal Alabama Partnership / Coastal Alabama Partnership is a 501c3 non-profit organization.

334-353-1969



ALABAMA
SOIL & WATER
CONSERVATION
COMMITTEE

[Home](#)[About](#)[Find Your District](#)[Resources](#)[Education](#)[News & Events](#)[Conserve Alabama](#)[Associations](#)

Voluntary, Incentive-Based, Locally-Led Conservation

Conserving Alabama's Natural Resources for Future Generations



Conservation Districts developed out of a dire national need to implement soil erosion control practices and revive farmland.

Take Bold Steps for Conservation.

Explore your area and begin conserving today. Find your county and learn about what resources are available to you.

[Select your county](#)

Show us your photos

showcasing what makes Alabama beautiful.

Tag your photos with

#conservealabama

to give us permission to repost them to our site and social media.





News

AACD-SUPPORTED LEGISLATION TARGETS FUNDING FOR IRRIGATION

May 21, 2018

NEWS FROM NATIONAL ASSOCIATION OF CONSERVATION DISTRICTS: VAN DYKE OF NEW MEXICO ASSUMES NACD HELM

February 6, 2017

2016 AACD AWARD WINNERS

December 21, 2016

Events

There are no upcoming events.

ABOUT US

Established by the Legislature in 1939, SWCC advances locally-led natural resource conservation by cooperating with local, state, and federal entities to practice and promote soil and water stewardship.

CONTACT US

Soil & Water Conservation Committee
P.O.Box 304800 / Montgomery,
AL 36130-4800 / 334.242.2620

SOCIAL MEDIA



ALABAMA
SOIL & WATER
CONSERVATION
COMMITTEE

© 2018 All rights reserved.

Web Development by Kindred Technology Group

334-353-1969



ALABAMA
SOIL & WATER
CONSERVATION
COMMITTEE

[Home](#)[About](#)[Find Your District](#)[Resources](#)[Education](#)[News & Events](#)[Conserve Alabama](#)[Associations](#)

District List

[Home](#) / [District List](#)[A-B](#) / [C-D](#) / [E-F](#) / [G-H](#) / [I-J](#) / [K-L](#) / [M-N](#) / [O-P](#) / [Q-R](#) / [S-T](#) / [W](#)

Autauga

Autauga County Conservation District

2226 Hwy. 14 West, Suite A

Autaugaville, Alabama, 36003-2540

Phone: 334-365-5532

Email: autauga@alconservationdistricts.org

Staff:

Paula Adams, District Administrative Coordinator

Baldwin

Baldwin County Conservation District

207 Faulkner Dr., Suite 107

Bay Minette, Alabama, 36507

Phone: 251-937-3297

Email: baldwin@alconservationdistricts.org

Staff:

Rhonda Bryars, District Administrative Coordinator

Barbour

Barbour County Conservation District

18 Nern St.

Clayton, Alabama, 36016

Phone: 334-775-3266

Email: barbour@alconservationdistricts.org

Staff:

Carol Threatt, District Administrative Coordinator

Bibb

Bibb County Conservation District

183 SW Davidson Drive

Centreville, Alabama, 35042-0598

Phone: 205-926-4360

Email: bibb@alconservationdistricts.org

Staff:

Debbie Clements, District Administrative Coordinator

Blount

Blount County Conservation District

55545 U.S. Hwy. 231 Ste. A

Oneonta, Alabama, 35121

Phone: 205-274-2363

Email: blount@alconservationdistricts.org

Baldwin County Commission

Fund 00001 General Fund
Dept 51990 Miscellaneous Appropriations

FY 2018 Budget
Detailed Expenditures

Object Act	Sub Act	Description	FY 2014	FY 2015	FY 2016	FY 2017 YTD August	FY 2017 Budget	FY 2018 Budget
5121		Workmans Comp	-	-	-	-	-	-
5129		Disability	-	-	-	-	-	-
5150	001	Lobbying Firm Contract	132,277	114,461	114,079	104,585	114,000	114,000
5150	002	Lobbying Contract Callahan	-	-	-	-	-	-
5150	003	Lobby Contract Adams & Reese	-	-	54,000	66,000	72,000	72,000
5150	004	Lobby Cont Christie Strategy G	-	-	31,500	31,500	42,000	42,000
5150	005	Consulting - DSD Serv Group	-	-	-	7,720	24,000	24,000
5230		Landscaping	-	-	-	-	-	7,500
5290		Misc Appr From Contingency	8,700	8,700	-	28,489	-	1,101,658
5294		Chamber of Commerce Alliance	2,000	2,000	2,000	2,000	2,000	4,000
5296		MOSQUITO SPRAYING	-	-	-	-	-	-
5299	002	VOAD	-	-	-	-	-	-
5299	003	BC Heritage Museum	25,000	15,000	15,000	15,000	15,000	15,000
5299	0031	BC H Museum: Waiving Ent Fee	2,800	3,200	3,200	3,200	3,200	3,200
5299	004	Battleship Park	10,000	-	-	-	-	-
5299	005	W Florida Reg. Planning Coun	19,073	13,098	13,110	12,907	11,601	12,907
5299	007	Board of Education Approp	-	-	-	-	-	-
5299	008	Eastern Shore MPO	-	-	-	-	-	-
5299	009	Juvenile Court Appropriation	16,999	-	-	-	-	-
5299	011	Coastal AL Partnership	-	-	-	25,000	25,000	25,000
5299	012	SW AL Workforce Development	-	-	-	22,500	22,500	22,500
5299	013	Indigent Care Res. 2017-089	-	-	-	745,755	-	-
5299	014	Corte Rd Appropriation	-	-	-	-	-	200,000
5332		S A R P C	81,582	85,415	85,415	83,544	85,415	89,686
5342		Comm Discretionary Fund	16,931	6,155	4,500	4,500	25,000	25,000
5343		One Half Red Cross Disaster	-	-	-	-	-	-
5344		Mobile Bay Natl Estuary Prog	-	-	10,000	-	-	50,000
5345		Lillian Rec Center	1,200	1,200	1,200	1,200	1,200	1,200
5346		Mental Retard for Transport	30,000	30,000	30,000	30,000	30,000	30,000
5349		Transportation: Birdfest	-	-	-	-	-	-
5350		Trans Intl Baccalaureate	-	-	-	-	-	-
5352		Historical Commission	-	4,800	-	60,000	60,000	60,000

Baldwin County Commission

Fund 00001 General Fund
Dept 51990 Miscellaneous Appropriations

FY 2018 Budget
Detailed Expenditures

FY 2017 YTD

Object Act	Sub Act	Description	FY 2014	FY 2015	FY 2016	August	FY 2017 Budget	FY 2018 Budget
5358		Library Services	-	-	7,500	-	-	-
5358	01	Library Ser: 1/2 Video T	-	-	-	-	-	-
5362		Bay Minette Rotary Club	500	500	500	500	500	500
5367		Blueprint for Tomorrow	-	-	-	-	-	-
5368		Literacy Councils	-	-	-	-	-	-
5370		Baldwin Housing Alliance	-	-	-	-	-	-
5371		Gulf Coast RC&D Board	3,000	-	3,250	3,250	3,250	3,250
5376		North Baldwin Search/Rescue	-	-	-	-	-	-
5377		Lower Alabama Search/Rescue	-	-	-	-	-	-
5378		SW AL Abuse Network	-	-	-	-	-	-
5379		B. C. Sheriff' Boys Ranch	-	-	-	-	-	-
5381		Daphne Search & Rescue, Inc.	-	-	-	-	-	-
5390		Alabama CoOp Ext Service	51,380	51,380	51,380	53,854	53,854	53,854
5390	01	Ext Service Telephone	-	-	-	-	-	-
5400		BC Soil & Water Conservation	64,438	64,438	64,438	64,438	64,438	75,500
5400	001	Water Shed Coor Allocation	-	-	-	-	-	41,500
5410		BC Econ Develope Alliance	300,000	300,000	350,000	350,000	350,000	350,000
Totals		51990 Miscellaneous Appropriations	\$ 765,880	\$ 700,347	\$ 841,072	\$ 1,715,942	\$ 1,004,958	\$ 2,424,255

Eastern Shore MS4 Annual Meeting Minutes

10-12-17 @ 1:30pm

ES MS4 Representatives:

ALDOT: Evan Davis, Macey Taylor & Cheyenne West

Baldwin County: Celena Boykin, Vince Jackson

City of Daphne- Ashley Campbell

City of Fairhope- Kim Burmeister

City of Spanish Fort- Casey Rains



Topics Discussed:

ALDOT's Items

1. Evan gave an overview of ALDOT's Individual MS4 Permit Coverage
 - ALDOT'S permit is a state wide permit
 - ALDOT is completing their state wide mapping & sampling
2. Evan introduced Macy and Cheyenne. Macy is with the maintenance department. She helps with local education outreach events and Cheyenne is with public relations. Cheyenne stated that she is using Twitter social media to reach the public about ALDOT events.
3. ALDOT events and additional comments:
 - Clean Mobile-Government Street trash clean up-20cy of trash was removed
 - September-Lunch & Learn –Erosion & Sediment Training
 - Coastal Cleanup-ADCNR Event
 - Clear water Alabama-November 1 & 2, Mobile Convention Center

Baldwin County's Items:

1. Vince asked to be added back to the ES MS4 email list
2. Vince discussed the County's MS4. The county's MS4 covers a very small area of the County. The County's MS4 is managed in the Highway Department. The County has hired a new environmental position, Peyton Rogers. The new position will be helping with the MS4 program.
3. Baldwin County events and additional comments:
 - Co-host Rain Barrel Workshop
 - County is funding the MBNEP this year
 - County will gladly host future events

Spanish Fort's Items:

1. Casey asked that Chester, Spanish Fort's new building official, be added to the ES MS4 email list.
2. Spanish Fort passed its Clean Water Ordinance which addresses the City's MS4 Permit.
3. The Clean Water Ordinance addresses the following:
 - 1000sf land disturbance permit
 - Best Management Practices Plan for residential lots
 - Residential lot erosion and sediment control inspection
 - Post Construction Maintenance
4. Spanish Fort is supporting the Mobile Bay National Estuary Program
 - MBNEP initiated a sediment study of the Bay Minette Creek Basin
 - The City and MBNEP seeking future grant funding through BP funds and/or NRCS
5. Spanish Fort events and additional comments:
 - The City has a new 32 acre park on Jimmy Faulkner Drive
 - The City is dealing with severe stream channel erosion along tributaries in the Spanish Fort Estates along sewer lines.
 - Spanish Fort co-sponsors local rain barrel workshops.

Fairhope's Items:

1. Kim discussed Fairhope storm water program, stormwater outfall mapping and illicit discharge
2. Fairhope's events and additional comments:
 - Earth Day MS4 Booth
 - Coastal Clean Up
 - Environmental Board
 - Storm drain marker installation
 - Possibility of rain barrel workshop at the next Earth Day

Daphne's Items:

1. Ashley discussed the City's ADEM 319 Grant Education Outreach partnership with the Alabama Cooperative Extension Systems Master Environmental Educators

Program. She mentioned the upcoming training in January, 2018. The MEE is an excellent opportunity to provide schools with stormwater education.

2. Ashley discussed the City's financial support of the MBNEP.

3. Ashley mentioned the Fish River Watershed Management Plan's effort to educate Property Owner Associations (POA) on the importance of detention basin maintenance and inspection. The Weeks Bay Research Reserve is working with local cities to create a template Operation and Maintenance guide for POA for long term maintenance and operation of private storm water facilities. The template will be help MS4's reach permit compliance.

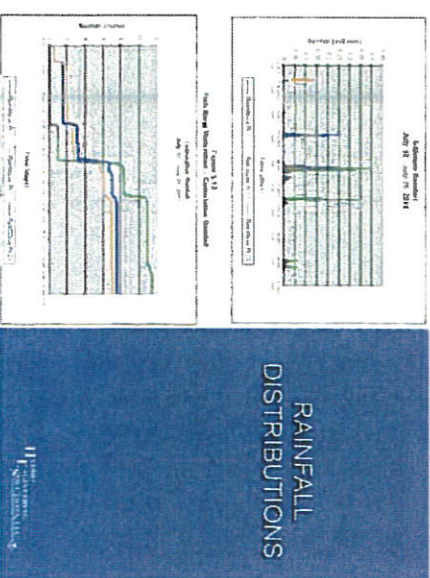
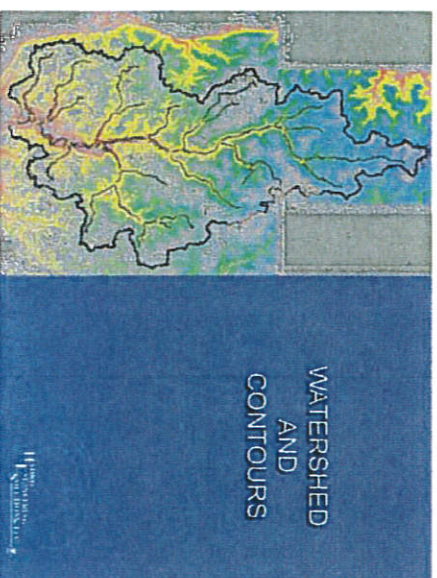
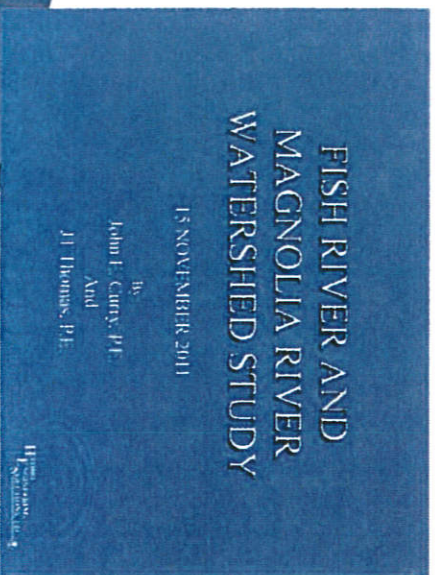
4. Ashley discussed the lack of participation at the Jubilee Festival's Rain Barrel Workshop. No one register prior to or the day of the workshop. The group discussed the fact that the last few workshops have had low participation. Ashley mentioned that she and Christian Miller with the MBNEP discussed the lack of participation. They agreed that an online video with the opportunity to pick up the rain barrel at local cities may be the answer. Daphne will continue the discussion with MBNEP and update the ES MS4s once a decision is made.

5. Ashley mentioned that the ADEM would be auditing the ES MS4 Cities in February, 2018.

The group discussed other education outreach opportunities in 2018. The group agreed to meet early in 2018 to plan the next event.

The meeting adjourned at 2:30pm

Local Partnerships



Local Partnerships

- City of Foley
- City of Robertsdale
- Town of Magnolia Springs



BALDWIN COUNTY
HIGHWAY DEPARTMENT
 Attn: P.O. Box 220
 Magnolia Springs, AL 36557
 Telephone: (251) 337-4371
 Fax: (251) 337-4371

December 3, 2013

The Honorable Charles H. Murphy
 Mayor
 Attention: Mr. Craig Smith
 City of Robertsdale
 P.O. Box 420
 Robertsdale, AL 36557
 Re: Fish River & Magnolia River Watershed Study
 Dear Mayor Murphy:

A study on the Fish River and Magnolia River watersheds was performed to gain an understanding of each watershed's hydrology and water quality. The study was performed by the Alabama Department of Transportation (ALDOT) and the Alabama Department of Environmental Management (ADEM). The study was performed in the summer of 2012. You are enclosing this letter along with a copy of the report because your jurisdiction contains areas that are located in one or both of the above mentioned watersheds. A map showing the watershed boundaries is attached.

This is to request that the city use the attached information for your stormwater regulations. The information is for informational purposes only and is not intended to be used for regulatory purposes. The information is the latest edition of the Alabama Department of Transportation's (ALDOT) Figure 5-11 of the study shows the Fish River watershed and breaks it into two main areas. The areas located north of the red line and west of the red line in the Fish River watershed are required to detain the 2, 5, 10, 25, 50, and 100 year storm events. The areas located east of the red line in the Fish River watershed are required to detain the 2, 5, 10, 25, 50, and 100 year storm events. The entire Magnolia River watershed is required to detain the 2, 5, 10, 25, 50, and 100 year storm events.

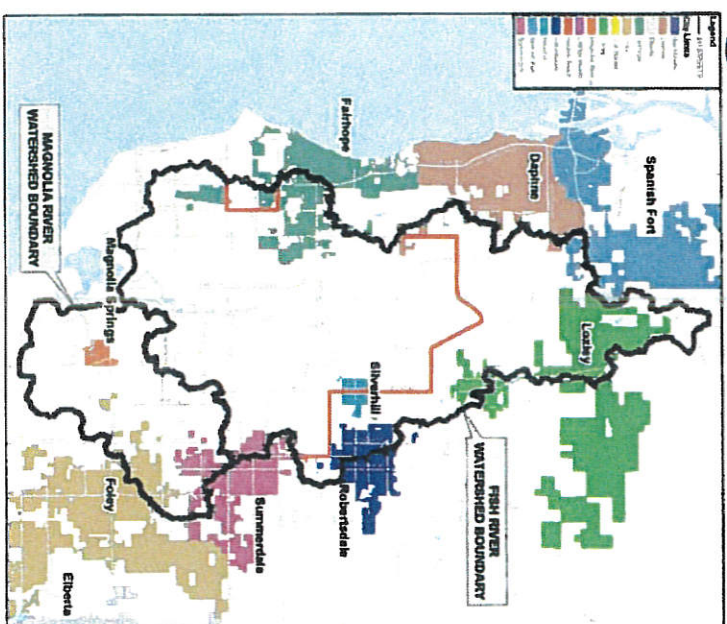
We hope that this study will be beneficial to you when overseeing future development in your jurisdiction. If you or any of your staff have questions and need the more information about the study and how we can work together to help manage the watersheds, please let me know.
 If you need further assistance, please feel free to contact me at (251) 837-4371.
 Sincerely,

CAL MAINBERT, P.E.
 COUNTY ENGINEER
 COT: Commissioner Frank Butt, Jr.
 Commissioner Tunde Dancy
 Commissioner Charles F. "Skip" Oaker
 Commissioner Charles E. "Skip" Jones
 Commissioner Robert L. "Skip" Smith
 Commissioner William R. "Skip" Smith
 State Planning Permit/Development Manager

- Town of Silverhill
- Town of Summerdale
- Town of Loxley



FISH RIVER & MAGNOLIA RIVER
WATERSHED BOUNDARIES



- ♦ **Materials Management:** Protect stockpiles of soil and paving materials from wind and water erosion. Have a spill prevention and control plan for hazardous materials such as fuel, paints, and solvents.

- ♦ **Seeding and Sodding:** Establish vegetative cover on disturbed areas to reduce erosion and provide soil stabilization.



- ♦ **Dust Control:** Control wind-borne particles during construction to minimize onsite and offsite damages and hazards.

- ♦ **Sediment Perimeter Protection:** Install silt fencing, straw rolls or a gravel bag barrier to prevent sediment discharges.



ADDITIONAL RESOURCES:

- ♦ Baldwin County's Planning and Zoning Department Natural Resource Division:
<http://www.planning.co.baldwin.al.us>

- ♦ The Alabama Department of Environmental Management (ADEM) offers information at its website.
<http://www.adem.state.al.us>

- ♦ The Alabama Soil and Water Conservation Committee published the Alabama Handbook for Erosion Control, Sediment Control, and Stormwater Management on Construction Sites and Urban Areas. It is available at:
http://swcc.state.al.us/erosion_handbook.htm

- ♦ The Environmental Protection Agency's (EPA) website on the National Pollutant Discharge Elimination System (NPDES) provides information on erosion and sediment control during construction.
<http://cfpub.epa.gov/npdes>

- ♦ International Stormwater Best Management Practices (BMP) Database:
<http://www.bmnpdatabase.org>



www.planning.co.baldwin.al.us

Main Office

312 Courthouse Square, Suite 18

Bay Minette, AL 36507

Phone (251) 580-1655

Fax (251) 580-1656

STORMWATER BEST MANAGEMENT PRACTICES (BMPs)



A SUPPLEMENT FOR THE EROSION CONTROL ORDINANCE



STORMWATER POLLUTION

If sedimentation or other pollutants from a construction site enters a watercourse, it can have negative effects on fish and aquatic life, their spawning grounds, and the overall turbidity, or clarity, of the watercourse. The Environmental Protection Agency (EPA) identifies the following as examples of pollutants: pesticides, petroleum products, construction chemicals, solvents, asphalt and acids.

BEST MANAGEMENT PRACTICES (BMPs)

In an effort to reduce or eliminate sediment and pollutant discharges into Baldwin County's watercourses, owners and operators in unincorporated and zoned areas of the county are required to submit an erosion control plan and implement best management practices (BMPs). BMPs are "structural or non-structural measures, practices, techniques or devices employed to avoid or minimize soil, sediment or pollutants carried in runoff to waters of the state."

PERMIT & REGULATORY REQUIREMENTS

The following permits and ordinances must be considered before construction activity commences:

- ♦ **Alabama Environmental Permit:** The Alabama Department of Environmental Management (ADEM) requires a notice of registration for all projects within the county which disturb 1 or more acres of land.

Information on this process and applications are available at: www.adem.state.al.us

- ♦ **Land Use Certificate:** The Baldwin County Planning and Zoning Department requires that a land use certificate be obtained prior to any construction commencing in zoned areas of the county. An erosion control plan showing the type and location of BMPs to be used must be submitted with the application. For sites less than 1 acre, the plan may be prepared by a qualified credentialed professional (QCP); a qualified credentialed inspector (QCI); a certified erosion control specialist; a licensed home builder or a licensed contractor. A qualified credentialed professional (QCP) must prepare plans for sites that are greater than 1 acre in size or those that fall under ADEM's authority.
- ♦ **Right-of-Way and Access Permits:** A permit is needed when working in the public right-of-way. Contact the Maintenance Engineer with the Baldwin County Highway Department at (251) 972-8533.
- ♦ **Building Permits:** Contact the Building Department to determine what building permits may be needed at (251) 580-2548.

INSPECTION PROGRAM

County staff monitors construction sites for proper erosion and sediment controls. They will ensure that BMPs are in place and providing adequate protection. If sediment and erosion are not being adequately controlled, the owner or operator may be subject to a stop work order or fines until the problem is corrected.

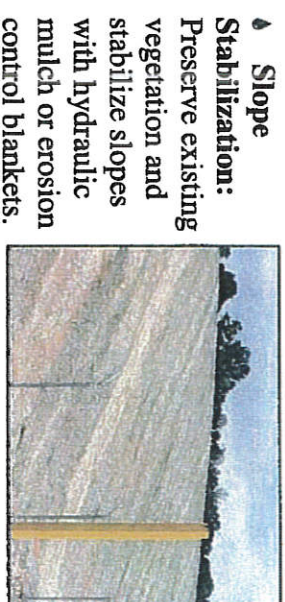
POLLUTION PREVENTION PRINCIPLES

The Alabama Handbook for Erosion and Sediment Control published by the Alabama Soil and Water Conservation Committee provides information to assist with the development of plans and the design of best management practices.

Multiple BMPs may need to be implemented to provide adequate erosion and sediment control protection.

The following are brief examples of BMPs that can be implemented on project sites:

- ♦ **Planning and Scheduling:** Minimize land disturbance by clearing only the area to be worked, rather than the entire site.



- ♦ **Slope Stabilization:** Preserve existing vegetation and stabilize slopes with hydraulic mulch or erosion control blankets.



- ♦ **Sediment Tracking:** Construct a stabilized construction entrance and conduct frequent street sweeping to keep sediment off of roadways.

WETLAND FACTS

There are an estimated 300,000 acres of wetlands in Baldwin County. 260,000 acres are freshwater and 40,000 have saltwater influence.

In the southeast, 96% of the commercial catch and over 50% of the recreational seafood harvest are fish and shellfish that depend of the estuarine and coastal wetland system.

Wetlands provide habitats for many waterfowl game species and for endangered and threatened species, such as Alabama red-bellied turtles, wood storks, and bald eagles.

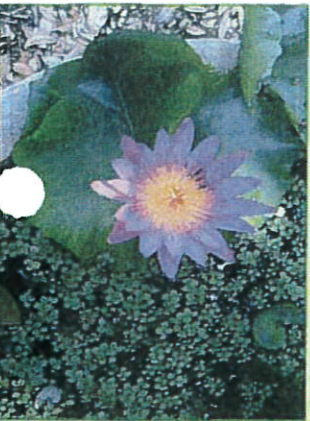


1 acre of wetlands can store 1,000,000 to 1,500,000 gallons of floodwater.

Nearly half of the wetlands in the U.S. are located in the southeast.

May is American Wetland Month.

February is World Wetlands Month.



WETLAND RESOURCES

The internet is an excellent source of wetland information. Many agencies, such as the U.S. Army Corps of Engineers, the Environmental Protection Agency, the United States Geological Survey, local experts, colleges and universities, and a numerous non-profit organizations have countless resources on wetlands. You may also want to contact these agencies directly for specific questions.

Environmental Protection Agency (EPA)

www.epa.gov/owow/wetlands

EPA Wetlands Hotline
(800) 832-7828

U.S. Army Corps of Engineers

www.usace.army.mil/cw/cecowo/reg/rw-bro.htm

U.S. Fish and Wildlife Service

www.fws.gov/nwi

U.S. Geological Survey National Wetlands Resource Center www.nwrc.usgs.gov

AL Department of Environmental Management

www.adem.state.al.us/FieldOps/Coastal/Coastal.htm

Baldwin County Zoning Ordinance - Article X Section 10.4.

www.planning.co.baldwin.al.us

Baldwin County Subdivision Regulations - Article 5 Section 2.2-

www.planning.co.baldwin.al.us

Baldwin County Planning and Zoning Department

Natural Resource Division
312 Courthouse Square, Suite 18

Bay Minette, AL 36507

Phone (251) 580-1655

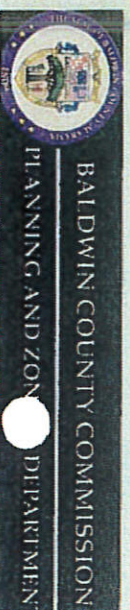
Fax (251) 580-1656

www.planning.co.baldwin.al.us

WETLANDS



Frequently Asked Questions and Wetland Resources



WHAT ARE WETLANDS?

The term wetland refers to lowlands covered with shallow and sometimes temporary intermittent waters. Wetlands are sometimes referred to as swamps, marshes, or bogs. Wetlands are transitional areas between terrestrial and aquatic ecosystems where the water table is typically at or near the surface.

Three criteria must be present for an area to be categorized as a wetland:



1) **Hydrology** - How the water enters and leaves the area. Indicators, such as visible inundation, water marks, and sediment deposits may be indicators of hydrology.

2) **Hydrophytic vegetation** - "Water-loving" plants that live in wetlands.

3) **Hydric Soils** - Often dark in color, these soils are formed when conditions of saturation, flooding, or ponding are present long enough to develop oxygen-depleted conditions.



Wetlands may be found in low-lying areas that have a high water table, or are located near rivers, lakes, streams or the beach. They can be areas of shallow open water with underwater plants; can look like a meadow; can occur on slopes or can surround a larger lake or stream.



Remember, an area does not have to be visibly wet to be considered a wetland.

WHY ARE WETLANDS IMPORTANT?

Wetlands were once considered wastelands and a hindrance to agricultural productivity and development. Today, wetlands are recognized as important and valuable ecosystems. They are home to many beautiful and rare species of plants and wildlife. The biodiversity of wetlands makes them comparable to tropical rain forests and coral reefs.



- Wetlands perform many important functions.
- They act as natural "sponges" that absorb flood waters.
- Wetlands also act as a filter for our drinking water.
- Wetlands are home to many fish and wildlife species. Many of these species are threatened or endangered.
- Wetlands serve as a "stop over" for migratory birds.
- Wetlands provide food and offer breeding/spawning grounds for many fish and wildlife species.
- Wetlands also provide numerous recreational opportunities.



WHAT IF I HAVE WETLANDS ON MY PROPERTY?

The presence of wetlands does not mean that a landowner cannot develop their property. If you suspect you have wetlands on your property contact the Baldwin County Planning and Zoning Department. Our staff can offer assistance by researching the property for potential wetlands and the presence of hydric soils using GIS technology.

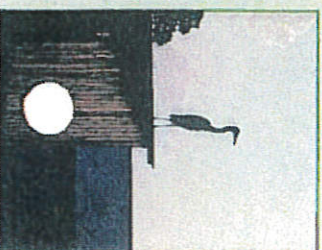
If our staff determines that wetlands may be impacted by the proposed development we can provide a listing of local environmental consultants who can make a site visit and perform a wetland delineation if necessary. The delineation will show the boundary of the wetlands.

If the consultant determines that the property contains wetlands that may be impacted by the development, then the U.S. Army Corp of Engineers must be contacted. The Corps of Engineers is the regulating body for all wetland activities. You may contact the Mobile office of the U.S. Army Corps of Engineers for additional information.

U.S. Army Corps of Engineers
Regulatory/Permitting Department

P.O. Box 2288
Mobile, AL 36628
(251) 690-2658

Additional wetland requirements are laid out in the Zoning Ordinances of Baldwin County and the Baldwin County Subdivision Regulations. These documents require a 30' setback for any type of development.



Community Rating System (CRS) Program

Baldwin County began its participation in the NFIP, Community Rating System Program in 1994. The CRS Program was developed by the Federal Insurance Administration to provide incentives for the NFIP communities to implement more stringent floodplain standards that the minimum NFIP requirements. The CRS rewards these efforts with discounts on flood insurance premiums.

Baldwin County has been successful in achieving the Class 6 rating, reducing flood insurance premiums by 20% resulting in a savings to the citizens of the unincorporated areas of Baldwin County. A 10% discount is provided for non-SFHAs. Instead of paying higher premiums, the money saved hopefully stays in the community.

As of 2011 Baldwin County had 9,783 flood insurance policies in force which estimates to \$2,126,335,400 respectively. Since inception into the NFIP, there have been 6,985 losses paid totaling approximately \$204,410,128.

For more information about flood insurance, property owners and potential buyers should contact their local insurance agent or call the toll-free information line for the National Flood Insurance Program at 1-800-427-4661.

Baldwin County Commission Community Rating System (CRS) Program

Administered by the

Baldwin County Planning & Zoning
Department

Foley Satellite Courthouse
201 East Section Street
Foley, Alabama 36535
Telephone: 251.972.8523
Fax: 251.972.8520

www.planning.co.baldwin.al.us

Direct Contact:

dhart@baldwincountyal.us

in conjunction with the

Baldwin County Highway Department

22070 Highway 59
Robertsdale AL 36567
Telephone: 251.937.0278

Emergency Management Agency

23100 McAuliffe Drive
Robertsdale AL 36567
Telephone: 251.972.6807

Building Inspection Department

201 East Section Street
Foley, Alabama 36535
Telephone: 251.972.6837

For Additional Information visit FEMA's
website at:

<http://www.fema.gov>

Baldwin County Commission



**Don't Delay
Buy Now!**

**FLOOD
INSURANCE
FOR
FINANCIAL
PROTECTION**

*For Real Estate Agents, Mortgage
Companies, Insurance Agencies,
Potential Buyers, Sellers, Property
Owners and the General Public*

April 2015

Floodplain Regulations and Local Flood Hazard Area & Flood Insurance Rate Maps

Baldwin County regulates construction and development in the floodplain to ensure that buildings will be protected from flood damage. Filling and similar projects are prohibited in certain areas. Houses substantially damaged by fire, flood, or any other cause must be elevated to or above the flood level when they are repaired.

Check for the Flood Hazard: Before you commit yourself to buying property, do the following:

- Ask the local building, zoning, or engineering department if the property is in a floodplain; if it has ever been flooded; what the flood depth, velocity, and warning time are; if it is subject to any other hazards; and what building and zoning regulations are in effect.
- Ask the real estate agent if the property is in a floodplain; if it has ever been flooded and if it is subject to any hazards, such as sewer backup or subsidence.
- Ask the seller and the neighbors if the property is in a floodplain, how long they have lived there, if the property has ever been flooded, and if it is subject to any other hazards.

The Baldwin County Inspection Department maintains FIRM maps. These maps are available for public inspection during normal business hours. They may also be viewed at your local library, also.

Upon written request, you may obtain a map of your property as it relates to a local flood hazard area. Contact the Baldwin County Planning & Zoning Department or visit their website at www.planning.co.baldwin.al.us.

Hurricane season officially begins on June 1. Property owners and renters are encouraged to purchase flood insurance policies as soon as possible to provide financial protection from floodwaters and storm surge.

The National Flood Insurance Program, administered by FEMA makes federally backed flood insurance available in communities that adopt and enforce floodplain management ordinances to reduce future flood losses. Flood damage, unlike wind damage, is not covered by a homeowner's policies. This coverage must be purchased separately and is available only in communities that participate in the NFIP.

Since Baldwin County is an NFIP community, federally backed flood insurance is available, with the exception of Coastal Barrier Resources Act (COBRA) areas along the Fort Morgan peninsula.

There is a 30-day waiting period before a new flood insurance policy becomes effective. There are two exceptions to the 30-day waiting period. First, there is no waiting period following the initial purchase of flood insurance when that purchase is in connection with making, increasing, extending or renewing a mortgage or construction loan; the policy will become effective upon loan closing. Secondly, there is no waiting period if the initial purchase occurs during the 13-month period following the revision or updating of a flood insurance rate map and in this case, the policy will go into effect at 12:01 a.m. the day after purchase.

All properties secured by a federally backed mortgage (FHA, VA, FNMA, etc.) must carry flood insurance. Within the COBRA area, the use of direct or indirect federal funding sources is prohibited. Private flood insurance may be available.

Flood Protection: A building can be protected from most flood hazards, sometimes at a relatively low cost. New buildings and additions can be elevated above flood levels. Existing buildings can be protected from shallow floodwaters by regarding, berms, or floodwalls. There are other retrofitting techniques that can protect a building from surface or subsurface water.

SAVE DOLLARS

\$\$\$\$\$\$\$\$\$\$\$\$\$\$\$\$



BE SURE TO PURCHASE A FLOOD INSURANCE POLICY

Many people think they don't need flood insurance because the federal disaster assistance will bail them out. HOWEVER, floods are not always declared a federal disaster area. Even when they are, aid is usually in the form of a loan, which must be paid back with interest.

Flood insurance on the other hand, pays for all covered losses, and unlike loans, that money doesn't have to be paid back.

You can cover your home's structure for up to \$250,000, and its contents for up to \$100,000. For businesses, structural coverage is available up to \$500,000 and up to \$500,000 for contents.

Programa Sistema de Clasificación de la comunidad (CRS)

Condado de Baldwin comenzó su participación en el NFIP, Programa Sistema de Clasificación de la Comunidad en 1994. El Programa de CRS fue desarrollado por la Administración Federal de Seguros. Para ofrecer incentivos para las comunidades NFIP a aplicar las normas de inundación más estrictas que los requisitos mínimos del NFIP. El CRS premia a estos esfuerzos con descuentos en las Pólizas de seguro contra inundaciones.

Condado de Baldwin ha tenido éxito en lograr la clasificación de Clase 6, reduciendo las Pólizas de seguros de inundación en un 20%, resultando en un ahorro para los ciudadanos de las áreas no incorporadas del condado de Baldwin. Se ofrece un descuento del 10% para los no SFHA. En lugar de pagar Pólizas más altas, el dinero ahorrado con suerte se queda en la comunidad.

A partir del 2011 el condado de Baldwin tenía 9,783 pólizas de seguro contra inundaciones en vigor que estima a 2126335400 EE.UU. dólares respectivamente. Desde su creación en el NFIP, se han producido 6,985 siniestros pagados por un total de aproximadamente \$ 204,410,128.

Para obtener más información sobre el seguro contra inundaciones, los propietarios y los compradores potenciales deben contactar a su agente de seguros local o llame a la línea de información gratuita para el Programa Nacional de Seguros contra Inundaciones al 1-800-427-4661.

Comisión del Condado de Baldwin

Programa Sistema de Clasificación de la comunidad (CRS)

Administrado por la

Baldwin Departamento de Planificación y

Zonificación del Condado

Courthouse Foley Satellite

201 East Sección Calle

Foley, Alabama 36535

Teléfono: 251.972.8523

Fax: 251.972.8520

www.planning.co.baldwin.al.us

Contacto Directo:

dhart@baldwincounty.al.us

en conjunción con el

Baldwin Condado Departamento de

Carreteras

22070 Highway 59

Robertsdale AL 36567

Teléfono: 251.937.0278

Agencia de Manejo de Emergencias

23100 McAuliffe unidad

Robertsdale AL 36567

Teléfono: 251.972.6807

Edificio del Departamento de Inspección

201 East Sección Calle

Foley, Alabama 36535

Teléfono: 251.972.6837

Para información adicional visite el sitio

web www.fema.gov en:

<http://www.fema.gov>



Comisión del Condado de Baldwin

No Espere

Comprar Ahora!

SEGURO DE

INUNDACIÓN

PARA

PROTECCIÓN

FINANCIERA

*Para los agentes inmobiliarios,
compañías hipotecarias,
agencias de seguros,
potenciales compradores,
vendedores, propietarios y el
público en general*

Temporada de huracanes comienza oficialmente en junio 1. Los propietarios y se anima a los inquilinos para comprar pólizas de seguro tan pronto como sea posible para proporcionar una protección financiera de las inundaciones y las mareas de tempestad.

El Programa Nacional de Seguro de Inundación, administrado por FEMA fue respaldado por el gobierno federal de seguro contra inundaciones en comunidades que adoptan y cumplen con las ordenes de manejo de llanuras de inundación para reducir futuras pérdidas por inundaciones. Los daños por inundaciones, a diferencia de los daños del viento, no está cubierta por una Póliza políticas TM € s. Esta cobertura debe adquirirse por separado y está disponible sólo en las comunidades que participan en el NFIP.

Como el condado de Baldwin es una comunidad NFIP, seguro contra inundaciones respaldada por el gobierno federal está disponible, con la excepción Ley de Costas Barrera de Recursos (COBRA) áreas a lo largo de la península de Fort Morgan

Hay un período de espera de 30 días antes de una nueva póliza de seguro contra inundaciones entre en vigencia. Hay dos excepciones al período de espera de 30 días. En primer lugar, no hay período de espera tras la compra inicial de seguro contra inundaciones cuando esa compra es en relación con la fabricación, el aumento, la ampliación o renovación de un préstamo hipotecario o construcción; la política entrará en vigencia al momento del cierre del préstamo. En segundo lugar, no hay período de espera si se produce la compra inicial durante el período de 13 meses después de la revisión o actualización de un mapa tipo de seguro contra inundaciones y en este caso, la política ha entrado en vigor a las 12:01 am el día después de la compra.

Todas las propiedades garantizadas por una hipoteca con respaldo federal (FHA, VA, FNMA, etc.) deben tener un seguro contra inundaciones. Dentro del área de COBRA, está prohibido el uso de fuentes directas o indirectas de financiamiento federal. Seguro contra inundaciones privado puede estar disponible.

Inundaciones Protección de: Un edificio puede ser protegido de la mayoría de los riesgos de inundación, a veces a un costo relativamente bajo. Nuevos edificios y adiciones pueden ser elevados por encima de los niveles de inundación. Los edificios existentes se pueden proteger de las inundaciones de poca profundidad por respecto, bermas, o muros de contención. Hay otras técnicas de reforzamiento que pueden proteger un edificio de la superficie o el agua del subsuelo.

DÓLARES AHORRE

\$\$\$\$\$\$\$\$\$\$\$\$\$\$\$\$

Asegúrese de comprar una póliza de seguro INUNDACIONES

Muchas personas piensan que no necesitan seguro contra inundaciones porque la asistencia federal por desastre los puede ayudar. SIN EMBARGO, las inundaciones no siempre son declarados zona de desastre federal. Incluso cuando lo son, la ayuda es por lo general en forma de un préstamo, que debe ser pagado con intereses.

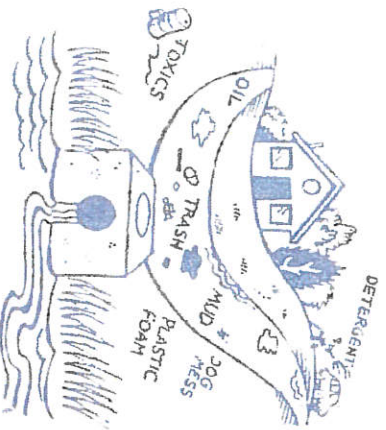
El seguro de inundación por el contrario, paga por todas las pérdidas cubiertas, a diferencia de los préstamos, este dinero no tiene que ser devuelto.

Puede cubrir su casa estructura para un máximo de \$ 250,000, y su contenido de hasta \$ 100,000. Para las empresas, la cobertura estructural está disponible hasta \$ 500,000 y hasta \$ 500,000 para el contenido.

What is the purpose of Stormwater Management?

The local governments in our communities have programs for the prevention and control of nonpoint pollution caused by stormwater runoff. The goals of stormwater management programs are to:

1. Slow down water, decreasing its ability to cause erosion and carry pollutants.
2. Prevent pollution of our rivers, streams, and bays by promoting proper use and disposal of toxic chemicals, oil, and litter.
3. Reduce the amount of runoff by encouraging water to soak into the ground.



What is the Mobile-Baldwin Stormwater Consortium?

The Mobile-Baldwin Stormwater Consortium was formed to coordinate, on a regional basis, the development of a stormwater management program. This program meets the requirements of the National Pollution Discharge Elimination System (NPDES) permit issued to the Consortium by the Alabama Department of Environmental Management.

Local governments and agencies participating in the Mobile-Baldwin Stormwater Consortium include:

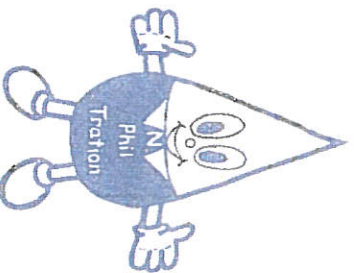
Mobile	Chickasaw
Creola	Daphne
Saraland	Fairhope
Satsuma	Mobile County
Prichard	Baldwin County

Alabama Dept. of Environmental Management
Alabama Department of Transportation
South Alabama Regional Planning Commission

For more information and/or to report violations contact:

Your building department, public works department, or city/county engineer.

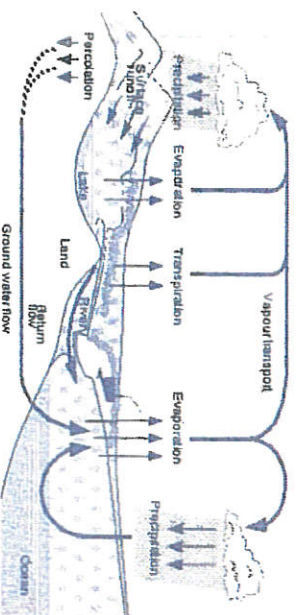
Alabama Dept. of Environmental Management,
Mobile Field Office, 450-3400
Baldwin County Commission, 937-0264
City of Chickasaw, 452-6463
City of Creola, 675-8142
City of Daphne, 626-9000
City of Fairhope, 928-2136
City of Mobile, 434-7177
City of Prichard, 457-3381
City of Saraland, 675-5103
City of Satsuma, 675-1440
Mobile County Commission, 690-8620
South Alabama Regional Planning Commission,
433-6541



Mobile-Baldwin Stormwater Consortium

What is Stormwater Pollution?

Rain falling on an area results in both benefits and problems. The benefits are watering vegetation and area cleansing. The problem is that when rain flows over streets and other surfaces, it picks up pollutants and carries them into the stormwater conveyance ("storm drain") system. The storm drain is designed to prevent flooding by transporting water away from urban areas. Unfortunately, this water, and all the contaminants it contains eventually flows to our streams, lakes, and the ocean where we swim and fish. Once there, polluted runoff can harm wildlife and their habitats. In some cases, it can even cause beach closures or make fish and shellfish unsafe to eat. Since these pollutants are washed from a wide area and cannot be traced to a single source, they are called nonpoint source pollutants.



Some Causes for the Problem!

Nonpoint source pollution comes from everyday activities, such as driving to work, cleaning with household chemicals, and applying fertilizer and pesticides to lawns and fields. These chemicals and fertilizers may be carried into our water bodies when it rains. Contaminated runoff may also filter through the soil and pollute the groundwater. Water entering storm drains is not treated in a sewage treatment plant.

What are the problems?

Sediments - Unprotected development sites, some agricultural practices, and natural erosion produce large volumes of sediment. These soil particles along with other debris wash into our streams and bays making the water cloudy and turbid. Sediment in the water prevents sunlight from reaching aquatic plants preventing them from producing the necessary oxygen levels for fish to survive. Sediment may also fill streams and ditches causing increased flooding in and along the drainage ways.

Nutrients - Phosphorus and Nitrogen from fertilizers and septic tanks often attach to soil particles and accelerate the growth of algae. Rapid and excessive growth of algae and aquatic plants can contribute to oxygen depletion in area waters. It may also interfere with recreational activities including swimming, boating and fishing.

Microorganisms - Bacteria, viruses and other disease causing organisms from animal and human waste may enter water bodies making them unsafe for fishing and swimming. It is possible for these organisms to be carried into our public water supply causing hepatitis, cholera and dysentery.

Toxic Chemicals - Motor oil and gasoline from parking lots, lead from gasoline and exhaust, zinc from tires, and pesticides in stormwater runoff may kill aquatic organisms or impair their health, growth or ability to reproduce.

Litter - Litter is not only unsightly, but may kill animals that live in our bays and streams that mistake plastic bags and cigarette butts for food.



How You Can Help! *Practices that will help prevent stormwater pollution*

Around the House

Many products used around the house contain petroleum based chemicals and/or other non-biodegradable ingredients. Pouring chemicals down the drain, flushing them down the toilet, and dumping them on the ground can be dangerous to our surface and ground water. Cans and containers with residual chemicals could potentially leach toxins into the air, soil or groundwater, eventually making its way into the food chain.

- ⇒ Landscape with native and drought resistant plants, thus reducing the need for water, fertilizer and pesticide use.
- ⇒ Compost leaves and grass clippings to prevent the clogging of storm drains and ditches.
- ⇒ Conserve water. By saving water you can help minimize stormwater overflows at your wastewater treatment plant.

Under the Hood

Proper maintenance of your vehicle can protect your own safety as well as plants and animals that live in our area waters.

- ⇒ Properly maintain your vehicle to protect your safety as well as plants and animals that live in our area waters.
- ⇒ Recycle oil. Take used oil to an oil recycling center, or a service center. Never pour your used oil down a storm drain or on the ground.
- ⇒ Maintain your vehicle. Correct fuel and oil leaks as soon as they are noticed.
- ⇒ Wash cars on grass or sandy areas. This waters the lawn and allows the water to infiltrate into the ground and reduces runoff.

At the Tank

Septic systems, if properly maintained, are efficient waste treatment systems. However, when a septic system is not maintained, it loses the ability to remove pollutants and disease-carrying microorganisms from wastewater. This untreated wastewater may pollute the water we utilize for drinking water and household needs.

- ⇒ Maintain your septic tank. When a septic tank is not maintained it loses the ability to remove pollutants and disease-carrying microorganisms from wastewater. This untreated wastewater may pollute the water we utilize for domestic supplies.
- ⇒ Have the septic tank pumped ever three to five years.
- ⇒ Don't dispose of grease, cooking oil, or car oil down the drain
- ⇒ Keep heavy equipment off field lines
- ⇒ Don't install a garbage disposal.
- ⇒ Don't place plants with large root systems near field lines.

Look for and report Violations!

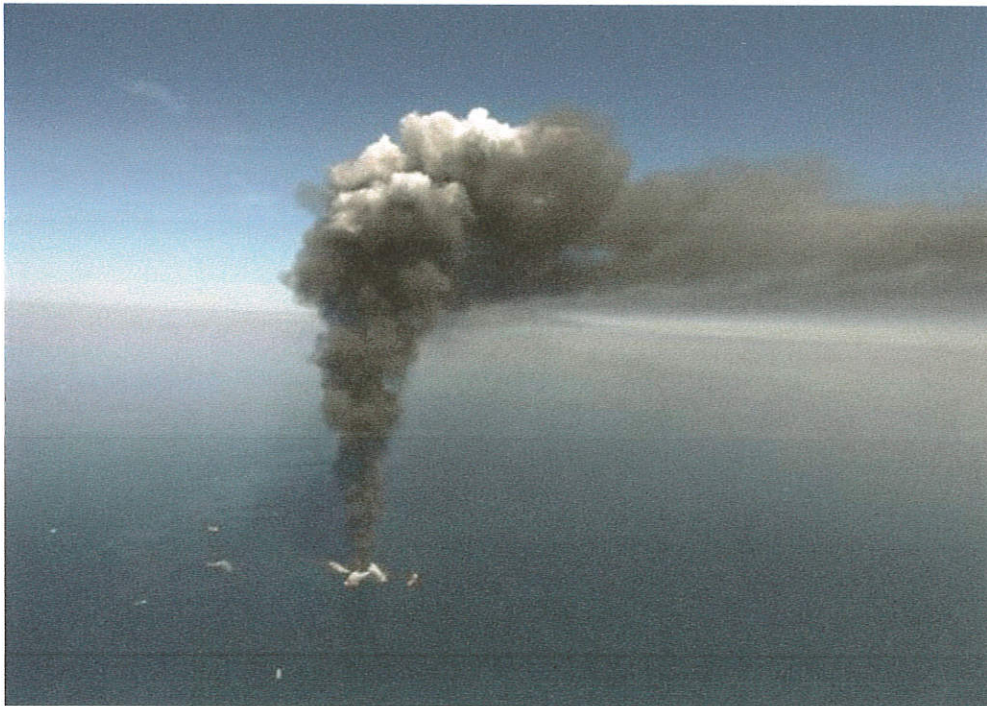
It is currently against the law to impair the water quality of a creek, stream, or bay through the introduction of soil, chemicals, or litter. It is also against the law to connect a storm drain to a sewer line or a sewer line to a storm drain. If you have knowledge of this type of violation, call the Alabama Department of Environmental Management or your local government officials.

REAL-TIME NEWS FROM AL.COM

\$315 million from RESTORE Act to fund projects in Mobile, Baldwin counties

Updated Mar 8, 2018;

Posted Mar 8, 2018



In this April 21, 2010 file photo, oil can be seen in the Gulf of Mexico, more than 50 miles southeast of Venice on Louisiana's tip, as a large plume of smoke rises from fires on BP's

Deepwater Horizon offshore oil rig. (Gerald

Herbert/The Associated Press)

Herbert/The Associated Press)

Our Privacy Policy and User Agreement have changed.

By using or registering on any of our sites, you agree to our updated User Agreement and Privacy Policy and Cookie Statement.



6

727
shares

By **Lawrence Specker**, lspecker@al.com

A whopping \$315 million is coming to infrastructure, environmental restoration and economic development projects in Mobile and Baldwin Counties, courtesy of the RESTORE Act and the Alabama Gulf Coast Recovery Council.

It's funding nearly 50 projects, some of which have obvious potential to change life on the coast. The biggest include \$56 million for five major road expansion projects in Baldwin County, \$28 million for a new facility at the Port of Mobile, \$27 million for projects affecting Dauphin Island's Aloe Bay and \$21 million to redevelop the docks in Bayou La Batre. Tens of millions of dollars will go to projects to improve water-sewer systems and eliminate sewage overflows.

The money comes from penalties paid by companies involved in the 2010 Deepwater Horizon oil disaster in the Gulf of Mexico. The RESTORE Act established a trust fund to hold much of that money aside for "programs, projects, and activities that restore and protect the environment and economy of the Gulf Coast region."

Deciding where that money goes has been a complex multi-year, multi-agency process. On Wednesday, the Alabama Gulf Coast Recovery Council (AGCRC) announced the first round of funding, which may be the largest -- but not the last.

Our Privacy Policy and User Agreement have changed.

By using or registering on any portion of this site, you agree to our updated

[User Agreement](#) and [Privacy Policy](#) and [Cookie Statement](#).



"There are some really great ones," Eliska Morgan, the council's executive director, said Thursday. "We've been working toward this end for some time."

Morgan said more than 400 projects were submitted by various organizations and governmental entities. Many that didn't make the cut for this round may be eligible for future consideration, she said.

"Key points" in an AGCRC presentation include a statement that "(t)he Council intends to distribute RESTORE Act funds between Baldwin and Mobile Counties on an equitable basis for projects deemed viable. While this equity may not be realized in the First Round, it will be achieved over time as amended plans are developed."

Mobile County had more requests, totaling nearly twice the

money as Baldwin County requests, meaning more Mobile

County projects were deferred until future rounds, according to the AGCRC presentation.



Our Privacy Policy and User Agreement have changed.

By Using or registering on any portion of this site you agree to our updated User Agreement and Privacy Policy and Cookie Statement.

An upcoming 45-day comment period will give the public a chance to weigh in on the selected projects. A list of projects for which funding has been committed follows, with basic details. Grants are listed alphabetically by project name.

BALDWIN COUNTY:

Alabama Point Seawall Repair (City of Orange Beach), \$2,488,000 -- "The purpose of this project is to rebuild the existing Alabama Point Seawall with a more resilient method of construction for the tidally-influenced marine environment and to protect the recent improvements on the upland portion of the area."

Ambassadors of the Environment (City of Gulf Shores), \$9,748,254 -- "The City of Gulf Shores will construct a state-of-the-art facility, utilizing the latest green building technologies, on 11.86 acres of City-owned property located adjacent to Gulf State Park. The architecture will mimic functional natural cycles found in the many habitat types that are easily accessible in coastal Alabama. The purpose ... is to create a sustainably-

Our Privacy Policy and User Agreement have changed.

By using or registering on any portion of this site, you agree to our updated User Agreement and Privacy Policy and Cookie Statement.



designed ecotourism program where participants can learn about the ecology, biodiversity, sustainability, and resource management of the northern Gulf of Mexico."

Baldwin Beach Express I-10 to I-65 Extension Right of Way Acquisition (Baldwin County), \$11,340,000 -- "This submittal seeks funding for Right of Way (ROW) property acquisition to accommodate the proposed 24.5 mile Baldwin Beach Express extension between I-10 and I-65. The objective is to acquire all right-of-way necessary to move to the construction phase. Regional economic recovery, tourism, industrial growth, and public safety are supported and enhanced through the completion of this project."

Baldwin County ALDOT Capacity Improvements (Baldwin County), \$56,800,000 -- "The Alabama Department of Transportation, Baldwin County, and the cities of Spanish Fort, Daphne, Fairhope, Orange Beach, and Gulf Shores are cooperatively pursuing the completion of five major infrastructure projects long-needed in the Gulf Coast Region to reduce congestion and enhance access to and between the surrounding areas."

Our Privacy Policy and User Agreement have changed.

By using or registering on any portion of this site, you agree to our updated [User Agreement](#) and [Privacy Policy and Cookie Statement](#).



Canal Road Improvements East of State Road 161 (City of Orange Beach), \$1,848,270 -- "This project will promote community resilience and economic growth by addressing the hindrance of economic development on Canal Road east of and near the SR-161 intersection in Orange Beach. Growth of businesses and the tourism industry in Orange Beach have led to increased traffic volumes, resulting in a need to enhance capacity and efficiency."

Eastern Shore Sanitary Sewer Overflows (SSOs) Prevention Plan (City of Fairhope), \$1,000,000 -- "The purpose of this project is to minimize, or eliminate altogether, sanitary sewer overflows on the Eastern Shore resulting from insufficient capacity and inflow and infiltration from excess stormwater. In addition, the project aims to improve the overall water quality of Mobile Bay by protecting runoff to the Bay from sanitary sewers and sediment from stormwater erosion."

Environmental Restoration of Cotton Bayou & Terry Cove (City of Orange Beach), \$500,000 -- "This project will develop an ecological understanding of the environmental and ecological health of the Cotton Bayou/Terry Cove Systems with an outcome to understand what restoration activities would enhance the overall health of the system. This planning activity will provide engineering and design and a cost estimate for proposed restoration."

Our Privacy Policy and User Agreement have changed.

By using or registering on any portion of this site, you agree to our updated User Agreement and Privacy Policy and Cookie Statement.



Expansion of the Orange Beach Wildlife Rehabilitation and Education Center (City of Orange Beach), \$183,500 -- "The purpose of this project is to expand the capacity and capabilities of the current rehabilitation facility to accommodate additional types of species. These improvements will also allow an upgrade from short and intermediate rehabilitation terms to long term rehabilitation resulting in less transfers and euthanasia outcomes."

Fairhope Area Community-Based Comprehensive Land Use Plan (City of Fairhope), \$650,000 -- "This project involves the creation of a community-driven comprehensive land use plan for the City of Fairhope to address growth with an emphasis on environmental stewardship and a legal foundation for implementation."

Fairhope Sewer Upgrade Phase I (City of Fairhope), \$10,000,000 -- "The project proposed in Phase I will address the most urgent needs within the sewer system by instituting major rehabilitation measures for the complete replacement of 4 main

Our Privacy Policy and User Agreement have changed.

By clicking on the link in the email or on this page, you agree to our updated User Agreement and Privacy Policy and Cookie Statement.



pump stations and rehabilitation of the major gravity outfall lines utilizing cost-effective and environmentally sensitive engineering solutions."

Fort Morgan Parkway Trail Extension (ADCNR, State Parks), \$4,433,600 -- "This project proposes to extend and ultimately complete the Fort Morgan Parkway Trail from Fort Morgan Historical Park to Gulf State Park and includes the construction of a midzone to provide parking, restroom facilities, and interpretive signage. When completed, the Fort Morgan Parkway Trail will provide approximately 30 miles of recreation trail from Fort Morgan to Orange Beach and will connect with numerous trial spurs and loops along the way."

Gulf Coast Engineering Research Station (Auburn University), \$9,000,000 -- "This project proposes the construction of the GCERS facility in Orange Beach to support fundamental and applied engineering research for coastal issues in Alabama, including water quality, restoration and protection of

Our Privacy Policy and User Agreement have changed. By using or registering on any portion of this site, you agree to our updated User Agreement and Privacy Policy and Cookie Statement.

1

natural resources, and coastal emergency management. Additionally, this project includes two years' funding for operations and maintenance (O&M) of facility."

Gulf Coast Wildlife Recovery and Interpretive Center: Feasibility, Planning & Preliminary Design (City of Orange Beach), \$275,000 -- "This project proposes planning and design to expand the Gulf Coast Wildlife Recovery and Interpretive Center in Orange Beach. Once implemented, this facility would provide rehabilitation services for a variety of species as well as tourism and stewardship opportunities."

Lillian Park Beach Habitat and Shoreline Protection (Baldwin County), \$626,460 -- "Implementation of this project will establish a stable sand beach shoreline to improve public safety while mitigating wave energy contributions to beach erosion and habitat loss along Perdido Bay."

Little Lagoon Restoration Project (City of Gulf Shores), \$5,995,686 -- "This project will restore and improve approximately 2,500 acres of habitat within Little Lagoon by creating 1,000 feet of living shorelines, improving hydrologic connectivity of the existing canal system, converting approximately 200 septic systems, restoring shellfish and marsh/seagrass, and conducting ecological research and long-term monitoring."

Our Privacy Policy and User Agreement have changed.

By using or registering on any portion of this site, you agree to our updated [User Agreement](#) and [Privacy Policy and Cookie Statement](#).





1



Longevity, Stability & Water Quality Improvements, Bon Secour DMDA (Baldwin County), \$340,744 -- "This submittal seeks funding to replace an aging and structurally failing weir structure at the Bon Secour Dredge Material Disposal Area (DMDA) used by the US Corps of Engineers to dispose of dredged material from the Bon Secour River."

Meaher Park Improvements (ADCNR, State Parks), \$3,450,000 -- "This project will add 156 full service campsites, as well as parking, bath houses, a fishing pier, and utility infrastructure to Meaher Park in Spanish Fort. In addition, 10 RV park model cabins will be installed along with appropriate skirting, decking, steps, and/or ramps."

New Stream-Gaging Station on Fish River at Co Rd 32 (Baldwin County), \$87,250 -- "This submittal seeks funding for a new stream-gaging station on Fish River at Baldwin County Road 32 to assist authorities in flood forecasting and flood alert efforts. Additional river stage and streamflow data for Fish River will improve managers' ability to predict the timing and

magnitude of flood events, thereby helping protect property and ¹ lives." 
Our Privacy Policy and User Agreement have changed. 
By using or registering on any portion of this site, you agree to our updated [User Agreement](#) and [Privacy Policy and Cookie Statement](#).

Orange Beach North Sewer Force Main Upgrade (City of Orange Beach), \$5,195,000 -- "This project consists of the replacement of approximately 8 miles of sewer force main from a point on Highway 180 in Orange Beach to an existing lift station on County Road 12. The area benefitted by this upgrade will include areas north and east of Wolf Bay to Josephine as well as areas directly served by the force main."

Working Waterfront and Greenspace Restoration Project (City of Fairhope), \$6,200,000 -- "This project will include improvements to the Fairhope Municipal Pier, Pier Landing, and South Beach Park to insure resiliency, sustainability, and human interaction of the City of Fairhope's most precious resource: its waterfront."

MOBILE COUNTY:

AL State Port Authority Automotive Logistics/RO-RO Terminal (AL State Port Authority), \$28,767,710 -- "This

project will convert a derelict former Bulk Handling Facility into a state-of-the-art Roll On-Roll Off (Ro-Ro)/Mobile Vehicle



Our Privacy Policy and User Agreement have changed.

By using this site you agree to our updated User Agreement and Privacy Policy and Cookie Statement.

[Government](#)[Departments](#)[Community](#)[How Do I ?](#)[Services](#)[Payments](#)

Welcome to Baldwin County, Alabama

Welcome to the official website for Baldwin County. Our county seat is located in Bay Minette, Alabama. We strive to make this website helpful to you, the citizens and businesses that live and work in Baldwin County. Read more [About Baldwin County](#) . . .

Baldwin County, ten years older than the State of Alabama, remains Alabama's largest county, more on our [History](#) . . .

Stay up to date, view [Baldwin County's Community News and Information](#).

[View our Community Gallery](#), beautiful photographs captured by our local citizens and visitors.

Most Visited

- [Probate](#)
- [Search Records](#)
- [Revenue](#)
- [Recording](#)
- [Maps](#)
- [Online Payments](#)
- [Road Notices](#)
- [Solid Waste](#)
- [Services](#)
- [Baldwin County Commission](#)

**** Live Chat ****

[Employee Portal](#)

Contact Baldwin County Citizen Service Center

251.937.9561
251.928.3002
251.943.5061

[Reporting Fraud, Waste & Abuse](#)

[Email Citizen Services](#)
[Holidays and Operating Hours](#)
[Email Webmaster for Web Inquiry](#)

Follow us on:

[Maps](#)[Open Baldwin](#)

Announcements

- [Alabama Announces Bicentennial Celebration](#)
- [View the Baldwin County FY 2018 Budget Here](#)
- [Changes In Baldwin County Voting Precincts](#)

Public Notices

- [20180529 - Public Notice - BOA 1 Meeting Cancellation for May 30, 2018](#)
PDF, 148.62 KB
- [20180524 - Public Notice - ESMPO Draft FY19 UPWP - Request for Public Comments](#)
PDF, 337.29 KB

[View All ...](#)

Calendars

- [Baldwin County Meetings](#)
- [Baldwin County Public Hearings](#)
- [Events / County Parks](#)
- [Baldwin County Holidays](#)
- [Emergency Management Agency \(EMA\)](#)

[Government](#)[Departments](#)[Community](#)[How Do I ?](#) [Building Inspection Home](#)
[- Contact Us](#)[Staff](#)[Building Codes](#)[Coastal AE Zone](#)[Coastal VE Zone](#)[Elevation Certificates \(FY 2009-2010\)](#)[Fortified Homes](#)
[-NEW Residential Homes](#)
[-EXISTING Residential Homes](#)[Flood Map Risk \(Public Outreach\)](#)[Commercial Permit Requirements](#)
[- Commercial Application](#)[Residential Permit Requirements](#)
[- Residential Application](#)[Online Permitting \(Trades Permits Only\)](#)[Quicklinks](#)[Services](#)[Payments](#)[Maps](#)[Open Baldwin](#)[home](#) / [Departments](#) / Building Inspection

Building Inspection Department

We are responsible for administering and enforcing all applicable building codes with regard to residential and commercial construction in the permitting jurisdiction of the unincorporated areas of Baldwin County, as well as providing assistance to our customers so that they may understand and meet the code requirements for their project. In order to protect the health, safety and welfare of the citizens in the permitting jurisdiction of the unincorporated areas of Baldwin County, all construction must meet a series of requirements set forth by specific building codes. This includes new construction, additions to existing structures and remodeling. Both residential and commercial construction must meet these codes, and it is our job to enforce them.

The current codes adopted by Baldwin County Commission as of January 17, 2012 and will be **enforced beginning January 17, 2012** are as follows:

International Building Code, 2012
 International Gas Code, 2012
 International Mechanical Code, 2012
 International Plumbing Code, 2012
 International Residential Code, 2012
 International Energy Conservation Code, 2012
 National Electric Code, 2011 for Commercial Buildings & residential Buildings containing more than two (2) dwelling units.
 Baldwin County Supplemental Code for Residential Building in addition to the [IRC 2012 code](#).

Local Wind Load code - 3 second gust winds: applicable to the 2012 IRC only

130 mph - South of I-10
 120 mph - I-10 North to I-65
 110 mph - I-65 North to County line

Contact Us

Physical & Mailing Addresses

Foley
Satellite Courthouse ([map](#))
 201 East Section Avenue
 Foley, AL 36535

251.943.5061, Ext. 2810
 251.972.6837
 Fax: 251.972.6820

Fairhope
Satellite Courthouse ([map](#))
 1100 Fairhope Avenue
 Fairhope, AL 36532

251.928.3002, Ext. 2610
 251.990.4641
 Fax: 251.990.4642

[Government](#)[Departments](#)[Community](#)[How Do I ?](#) [Highway Home](#)[Staff](#)[County Maintained Roadways](#)[Highway Services](#)[-Driveway Permit Application](#)[-Permit Division](#)[Road Notices](#)[Stormwater Studies](#)[Subdivision Regulations](#)[Forms / Permit Applications](#)[-Subdivision Application Forms](#)[FAQ](#)[Other Helpful Links](#)[Services](#)[Payments](#)[Maps](#)[Open Baldwin](#)[home](#) / [Departments](#) / Highway Department

Welcome to the Baldwin County Highway Department

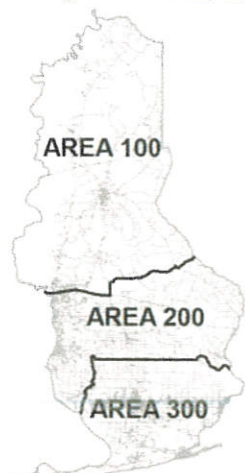


The Baldwin County Highway Department is committed to constructing and maintaining the infrastructure under our control in a reasonably safe condition for travel.

This department is responsible for the administration, maintenance, and construction of over 1,600 miles of dirt, gravel, and paved roads.

The County is divided up into three (3) maintenance areas. Each area has a supervisor, assistant supervisor, clerk, and crews that are responsible for the day-to-day maintenance of the County maintained roadways in their respective areas. This includes the grading of dirt and gravel roads, pothole repairs, and removal of limbs and vegetation to maintain adequate sight distances.

[View a larger detailed PDF map of the maintenance areas.](#)



Area 100 Maintenance covers the northern part of the County. This includes the areas north of I-10 (west of State Highway 59) and north of Truck Trail 17 (east of State Highway 59).

[Contact Area 100 Maintenance](#)

Area 200 Maintenance covers the central and western part of the County. It includes the area south of I-10 (west of State Highway 59) down to County Road 36, the west side of County Road 36, the west side of Fish River, and south of Truck Trail 17 (east side of State Highway 59) down to County Road 36/Blackwater River.

[Contact Area 200 Maintenance](#)

Area 300 Maintenance covers the southern part of the County including the Fort Morgan peninsula.

[Contact Area 300 Maintenance](#)

Contact Us

Physical Address:

Baldwin County
Highway Department
Central Annex II
(3rd & 4th Floors)
22070 Highway 59
Robertsdale, AL 36567

Mailing Address:

Baldwin County
Highway Department
Post Office Box 220
Silverhill, AL 36576

North Baldwin

Phone: 251.937.0371

Fax: 251.937.0201

Central Baldwin

Phone: 251.972.6897

Fax: 251.937.0201

South Baldwin

Phone: 251.990.4635

Fax: 251.937.0201

[Government](#)[Departments](#)[Community](#)[How Do I ?](#)

Search

Planning Home[-Contact Us](#)
[-Staff](#)[Zoning Ordinances](#)[Stormwater Information](#)[Planning Programs](#)[CRS Flood Insurance](#)[Planning Commission](#)[Board of Adjustment](#)[Fee Schedule](#)[Outlying Airfields](#)[Maps](#)[Historic Resources](#)**Forms & Applications**[-Zoning](#)
[-Land Use Certificate Applications](#)
[-Land Use Certificate Checklists](#)
[-Planned Residential Developments](#)
[-Location Verification Requests](#)[ListServ Sign-Up](#)[Links](#)[Services](#)[Payments](#)[Maps](#)[Open Baldwin](#)[home](#) / [Departments](#) / [Planning & Zoning](#)**Planning & Zoning Home**

The Baldwin County Planning & Zoning Department was established in 1996 to oversee the County's growth management activities. This includes administration of the County's land development regulations and management and implementation of various community development and economic development policies and programs. In addition, the department provides staff support for the Baldwin County Planning and Zoning Commission and the various Boards of Adjustment in the zoned areas.

[Baldwin County Master Plan – 2013 Approved and Adopted](#)[Online Submittal of Zoning Verification Requests](#)[2015 Flood Hazard Protection Newsletter](#)[FloodSmart.gov](#)**Current Planning Programs****Contact Us****Physical Addresses:**

22070 Highway 59
Robertsdale, AL 36567
([view map](#))

Phone: 251.580.1655**Fax:** 251.580.1656**Foley Satellite Office**

201 East Section Avenue
Foley, AL 36535
([view map](#))

Phone: 251.972.8523**Fax:** 251.972.8520**Mailing Address:**

Planning & Zoning
22251 Palmer Street
Robertsdale, AL 36567

[Email us](#)[View Staff](#)

[Government](#)[Departments](#)[Community](#)[How Do I ?](#)

Search

Planning Home[-Contact Us](#)
[-Staff](#)[Zoning Ordinances](#)[Stormwater Information](#)[Planning Programs](#)[CRS Flood Insurance](#)[Planning Commission](#)[Board of Adjustment](#)[Fee Schedule](#)[Outlying Airfields](#)[Maps](#)[Historic Resources](#)**Forms & Applications**[-Zoning](#)
[-Land Use Certificate Applications](#)
[-Land Use Certificate Checklists](#)
[-Planned Residential Developments](#)
[-Location Verification Requests](#)[ListServ Sign-Up](#)[Links](#)[Services](#)[Payments](#)[Maps](#)[Open Baldwin](#)[home](#) / [Departments](#) / [Planning & Zoning](#) / Stormwater Information**Stormwater Information****Baldwin County Storm Water Management Plan Phase II**

NPDES Permit No. ALR040042

Baldwin County Storm Water Management Program (SWMP) Plan Revision, 2017

MS4 Annual Report

- **2014, Baldwin County MS4 Annual Report**
PDF, 1.70 MB
- **2015, Baldwin County MS4 Annual Report**
PDF, 2.46 MB
- **2016, Baldwin County MS4 Annual Report**
PDF, 2.71 MB
- **2017, Baldwin County MS4 Annual Report**
PDF, 18.60 MB
- **Appendix_A**
PDF, 2.75 MB
- **Appendix_B**
PDF, 10.75 MB
- **Appendix_C**
PDF, 2.69 MB
- **Appendix_D**
PDF, 5.17 MB
- **Appendix_E**
PDF, 265.02 KB
- **Appendix_F_Coninued_2**
PDF, 79.84 KB

Studies

- **wolf-bay-watershed-study**
PDF, 1.35 MB
- **fish-river-amp-magnolia-river-watershed-study**
PDF, 1.94 MB

Continue viewing more links below:

- [Regulators](#)
- [QCI Training](#)
- [Technical Resources](#)
- [Alabama Coastal Foundation](#)
- [Mobile Bay National Estuary Program](#)
- [Baldwin County Master Environmental Education \(MEE\) Program](#)

[Government](#)[Departments](#)[Community](#)[How Do I ?](#)[Solid Waste Home](#)
[- Staff](#)[Garbage Collection Services](#)[Landfills](#)[Recycling](#)[FAQ](#)[Services](#)[Payments](#)[Maps](#)[Open Baldwin](#)[home](#) / [Departments](#) / [Solid Waste](#)

Solid Waste Department

***To ensure all items placed at the curb for garbage pickup are collected, please only**

PAY YOUR GARBAGE / TRASH BILL HERE

We accept Visa, MasterCard & Discover
(Sorry, we do not take American Express Cards)

COLLECTION SERVICES

Participation in the solid waste residential collection program, provided by Baldwin County Commission, is mandatory for residents of the unincorporated areas of Baldwin County, Alabama. This is part of an effort to reduce and prevent illegal dumping and littering. To report illegal dumping or littering, contact Solid Waste, and ask for Litter Patrol. Garbage Collection maintains a normal schedule on all holidays, except Thanksgiving and Christmas.

RESIDENTIAL GARBAGE SERVICE APPLICATION

LANDFILL CREDIT APPLICATION

LANDFILLS

Magnolia and MacBride Landfills, and Bay Minette Transfer Station's information.

RECYCLE

Baldwin County cares about the environment and has several container locations throughout the county where you can place items for recycling. The county does not have a curbside recycling program at this time.

FAQ

Solid Waste's Frequently Asked Questions.

Contact Us

BILLING OFFICE

Physical & Mailing Address:
22251 Palmer Street
Robertsdale, AL 36567
([view map](#))

M - F, 8:00 AM to 4:30 PM
except on [County Approved Holidays](#)

Phones & Fax:
251.972.6878
251.990.4621
251.937.0249

Fax: 251.970.4013

Email:
bcswbilling@baldwincountyal.gov

Contact the Landfills

Baldwin County QCI Certifications

- Allen, James	T5069
- Harville, Adam	T4152
- Holston, Michael	T4153
- Howell, Rodney	T4154
- Matthews, Jason	T4155
- Skipper, Hunter	T4156
- Warren, Charles	T4157
- White, Robert	T4158
- Younce, Joshua	T4159
- Thompson, Robert	T3268
- Gentry, Robert	T3264
- McWaters, Gabriel	T3265
- Meyer, William G.	T5070
- Propst, Douglas	T3266
- Nunnally, Joey	T4404
- King, Orie	T4581
- Lundy, Frank	31300
- Sharp, Mike	29814
- Mackey, Walter	40126
- Campbell, Michael	T3650
- Carroll, Kevin L.	T3001
- Howell, Jeremy	T1348
- Johnson, Burt A.	T4008
- Lundy, John Allen	T0924
- Peterson, Seth	T3754
- Peterson, Pete	T0797
- Ramer, Vincent	T0771
- Scott, Eric	T5466
- Sedlack, John	T0434
- Thweatt, Dustin	T4009

*Weeks Bay National Estuarine Research Reserve and
the Gulf of Mexico Coastal Training Program present:*

Smart Growth and Watershed Protection: tools for stormwater management

Christian Wagley with
Sustainable Town Concepts
will explore alternative patterns
of development, including more
compact neighborhoods,
diversity in land uses, and
accompanying stormwater
solutions, ordinances, codes,
education, and funding
recommendations.

**Wednesday, July 12th
9:00am to 11:00am**

**Spanish Fort Community Center
Multipurpose Room at City Hall
7361 Spanish Fort Blvd.
Spanish Fort, AL 36527**

For more information, visit

<http://smartgrowth-watershedprotection-al.eventbrite.com/>



Thanks to our sponsors and the City of Spanish Fort!



Weeks Bay Watershed Management Plan Stakeholder Workshop

When: August 16, 2017, 8:30 - noon

Where: Baldwin County Central Annex, 22251 Palmer Street, Robertsdale, Alabama 36567

Objectives: (1) Share the results of our research. (2) Make sure the recommendations in draft WMP address stakeholder concerns. (3) Agree on how to organize to implement the recommendations.

Agenda

8:30 Presentation: What have we learned, what we are recommending

9:00 Participation: Whole group rates recommendations

9:30 Break into small groups with similar goals: agriculture & forestry, environmentalist organization leaders, environmental scientists, developers, engineers, businesses, elected officials, city/county staff, and homeowners. Each group works together on an assignment to discuss the results, prioritize recommendations, and develop next steps (what, when, who).

10:30 Each group posts results on walls for review by the entire group

11:00 Entire group discusses key issues and action plans



Out for Public Comment: Weeks Bay Watershed Management Plan, Draft

For immediate release:

August 2, 2017

Mobile Bay National Estuary Program www.mobilebaynep.com

A draft Weeks Bay Watershed Management Plan is available for public comment through 5 pm Thursday, August 31st.

The Mobile Bay National Estuary Program (MBNEP) is seeking public input to help finalize the Plan. The MBNEP contracted with Thompson Engineering to oversee development of the plan, and identify projects to be considered for funding to improve the quality of the watershed in the face of increased population and business growth in Baldwin County.

This watershed is extremely large: approximately 12 miles wide and 27 miles long. Its headwaters begins in the Golden Triangle area north of I-10 and concludes where Weeks Bay empties into Mobile Bay. It includes the planning jurisdictions of nine municipalities and is home to countless subdivisions and businesses.

The good news is that the Weeks Bay Watershed – and especially Fish River – has been studied by scientists for numerous years. There are even computer simulation models of the watershed that will accurately predict outcomes if a new subdivision is added or changes occur in the way a property is farmed.

The Thompson team took the past research, added very specific current research – and a lot of stakeholder input – and developed a current report card and a forecast of what the watershed might look like in 2040 under different population growth scenarios.

The final step in the process is to obtain public input on the draft Plan. We are doing that in four ways:

1. A Stakeholder Work Group with representatives of every type of stakeholder – homeowners, farmers, developers, environmental group leaders, businesses, municipalities, county government, utilities – have worked with the team throughout the process. Many have volunteered to stay on as the Plan moves into the implementation phase.
2. A public input workshop will be held on Wednesday, August 16, 2017, from 8:30 – noon in the auditorium in the Baldwin County Central Annex, 22251 Palmer Street, Robertsdale. Because of space limitations and the workshop format, you must preregister by 5 pm Monday, August 14. You can do this with a short email to bob@rjhiggins.com.
3. A copy of the draft plan is posted online here: http://www.mobilebaynep.com/the_watersheds/weeks_bay_watershed/
4. Paper copies of the plan can be reviewed at these locations:
 1. Weeks Bay Reserve, US 98
 2. Spanish Fort Public Library, 7361 Spanish Fort Blvd
 3. Foley Community Department office, 200 N Alston Street
 4. Fairhope Utilities office, 555 South Section St
 5. Baldwin County Highway Department, 3rd Floor, Central Annex II, Robertsdale

Please send your comments on the Plan by August 31, 2017 to Mike Eubanks

at meubanks@thompsonengineering.com or mail to Mike Eubanks, Thompson Engineering, Inc., 2970 Cottage Hill Road, Suite 190, Mobile, AL 36606.

For more information on our watersheds, go to www.mobilebaynep.com.

###

MEMORANDUM
Draft Weeks Bay Watershed Management Plan Workshop

TO: File
FROM: Mike Eubanks
DATE: August 16, 2017
SUBJECT: Stakeholders Working Group Workshop #2
DISTRIBUTION: MBNEP, BCSWCD, Thompson Team, Stakeholders Working Group

1. The workshop was conducted on August 16, 2017, at the Baldwin County Central Annex (on Palmer Street in Robertsedale) between 8:30 and 11:30 PM. Copies of the attendees list (49 people), agenda, Draft WBWMP implementation recommendations, polling exercise for implementation recommendations, summary notes of breakout discussions, and photos of workshop are attached. Bob Higgins initiated the meeting with opening remarks. He welcomed everyone, had everyone introduce themselves, and thanked them for being there. Roberta Swann, MBNEP, provided some opening remarks, welcomed elected officials (three county commissioners and two mayors) and the importance of watershed planning.
2. Mike Eubanks presented a PowerPoint presentation the overall project summary: what we have learned and what we are recommending (presentation to be uploaded to MBNEP website). The presentation highlighted the Weeks Bay Watershed conditions, issues and concerns, proposed recommendations, funding opportunities.
3. Bob Higgins and Mike Shelton then performed a polling/prioritization group exercise through use of a PowerPoint presentation coupled with electronic polling "clickers" provided to attendees. A series of questions regarding the draft recommendations were answered anonymously through the use of the electronic clickers. The questions were based on the recommendations, and the polling questions and results are attached. General observations of the polling shows:
 - a. The most urgent concern is stormwater management and flooding; the second most urgent is degraded streams, wetlands, and riparian buffers; and third most urgent is pathogen source location and remediation.
 - b. The most urgent action to address stormwater management and flooding was promotion of low impact development/green infrastructure (LID/GI) practices.
 - c. Then a series of 20 slides addressing various draft recommendations were rated by the audience as: 1) extremely important and urgent, 2) very important but not urgent, 3) neutral, 4) not very important, and 5) not important or urgent. Nineteen of the 20 recommendations received a majority (total greater than 50%) of "extremely" or "very" important ratings (the only recommendation not getting a majority of this level of support was the "recognize uncertainties of potential future sea level changes", with a 49% rating). The draft recommendation that received the highest rating of "extremely" important, with 79%, was better maintenance of HOA and business stormwater management systems.
 - d. The group members said that they primarily belong to the following constituency categories: Agriculture (6%), Developer (13%), Elected Official (9%), Homeowner (16%),

Engineer (6%), Environmental Organization Member (13%), Environmental Scientist (22%), and Municipal or County Staff Member (16%).

4. Based on the last question of the polling exercise, the workshop broke into the following five breakout groups: 1) agriculture and forestry, 2) environmentalist organizations and environmental scientists, 3) developers, engineers, and businesses, 4) elected officials and city/county staff, and 5) homeowners. Each group selected a facilitator and scribe to work together addressing the following three items: 1) Is there anything missing from the plan that ought to be there? 2) Identify the top three most urgent recommendations. 3) Pick one of these and develop next steps (what, when, who). Once the discussion was over, each group posted their results and presented their ideas to entire group. The breakout discussion groups actually had some similarities in their summaries. The entire group discussed key issues and action plans. Notes transcribed from each of the group's flip charts are attached.
5. Bob Higgins brought the workshop to a close by thanking everyone again for being there and invited them to provide any comments on the Draft WBWMP (available on the MBNEP website) by the end of August. Roberta Swann added closing remarks also thanking attendees for their participation in this watershed planning effort over the past year, and also invited them to view a series of videos that the MBNEP has produced dealing with subjects such as stormwater management and low impact development measures – adding that the subject of homeowner association coordination/responsibilities for stormwater pond management may be developed soon based on the level of interest and discussion at today's workshop.

Prepared by
Courtney Harkness, Jordan Leech, and Mike Eubanks

Attachments:

- a. List of Attendees
- b. Workshop Agenda
- c. WBWMP List of Recommendations
- d. Electronic Clicker Polling Exercise
- e. Breakout Session Flip Chart Notes
- f. Workshop Photographs



**Draft Weeks Bay Watershed Management Plan, Stakeholder Workshop,
August 16, 2017**

Breakout Session Summary:

The breakout session consisted of dividing the attendees into smaller groups with similar goals: 1) agriculture and forestry, 2) environmentalist organizations and environmental scientists, 3) developers, engineers, and businesses, 4) elected officials and city/county staff, and 5) homeowners. Each group worked together for about an hour on an assignment to answer three separate questions:

- 1) Is there anything missing from the plan that ought to be there?
- 2) Identify the top three most urgent recommendations.
- 3) Pick one of these and develop next steps (what, when, who).

Breakout Group Responses:

Agriculture and Forestry

- A. What's missing?
 - 1 Urban homeowner fertilizer use (outreach).
 - 2 Increase study of impacts from turf farms.
- B. Top three.
 1. Nutrient reduction (#11), pathogen source location and remediation (#12), and sediment load reduction (#9).
 2. Restore degraded riparian buffers (#13).
 3. Education and Outreach for increased use of NRCS and FSA conservation programs (#7).
- C. What, When, Who for #7 "Education and Outreach of NRCS and FSA programs"
 - 1 What: Livestock management, fertilizer application, septic sewers outreach to private landowners and non-traditional customers (NRCS; FSA).
 - 2 When: Within two years and continue.
 - 3 Who: WBW coordinator (NRCS, BCSWCD, ACES, RC&D, City/County, ADEM 319, USFWS, SSWCC, MBNEP, CWP).

Environmental

- A. What's missing?
 - a. Forestry BMPs.
 - b. Make bio-solids an explicit part of pathogen issues.
 - c. Inventory/monitoring of industrial point-source pollution/discharge.
 - d. For recommendation #4, use of flood model as decision making tool.
- B. Top three (or four).
 - 1. #14, Implement strategic acquisition of high quality coastal and headwater habitats.
 - 2. #13, Restore degraded streams, wetlands, and riparian buffers.
 - 3. #1, Organize WMP Implementation Team and Watershed Coordinator Position.
 - 4. #12, Address pathogen source location and remediation.
- C. What, when, who for #14, "Implementation of strategic acquisition..."
 - 1. Community workshops.
 - 2. Public outreach/education.
 - 3. Continued/enhanced stakeholder engagement.

Developers/Engineers/Businesses

- A. What's missing?
 - 1. Focus on water quality for developments and detention ponds, not just water quantity.
 - 2. Regional detention ponds.
 - i. Some jurisdictions have regional management for detention, not just per development site.
 - ii. Performance requirements.
 - 3. Address possible requirements for jurisdictions to take over maintenance of detention ponds.
 - 4. HOA information literature at local and county level.
 - 5. Incentives for "good" development.
- B. Top three.
 - 1. Establish watershed coordinator position (#1).
 - 2. Inventory and assessment of stormwater basin systems (#6).
 - 3. Promote LID/GI practices and education (#3).
- C. What, when, who for #6, "Inventory/Assessment of Stormwater Basins"
 - 1. HOA education, resources, and contacts for guidance.
 - 2. Local legislation to implement maintenance and regular assessment.
 - 3. Proactive approach to legislation and regulation (i.e. "buy-in" by owners).
 - 4. HOA certification requirements for their annual compliance.
 - 5. "Responsibility" transition and education from developer to HOA; closing documents language, covenants language, developer requirement via legislation.

City/County/Elected Officials

- A. What's missing?
 - 1. A stormwater pond "checklist template" for assessing stormwater ponds (for HOAs and POAs).
 - 2. Revised language to better address/encourage regional detention areas.
 - 3. Put together committee to look into post construction BMP (stormwater ponds) maintenance (education for HOA's, etc.).
 - 4. Address plan for stormwater infrastructure maintenance funding (especially private-owned).
- B. Top three (or four).
 - 1. Watershed coordinator to implement plan (#1).
 - 2. Inventory and assessment of stormwater basins (#6).
 - 3. Run county flood model with updated land use forecasts (#4).
 - 4. Pave priority dirt roads #10.
- C. What, when, who for #1, "Establish watershed coordinator position".
 - 1. Establishment of watershed coordinator position for Baldwin County Soil and Water Conservation District is key.
 - 2. Explore funding not only from county, but also from each of the nine municipalities in the watershed, something like \$1/person based on municipality population.

Homeowners

- A. What's missing?
 - 1. Organize, coordinate, and conduct regular meeting of various HOA's and similar organizations.
- B. Top three.
 - 1. Regular meetings of HOAs and similar organizations.
 - 2. HOA representation in monthly municipal/county planners meetings.
 - 3. Impacts on existing developments/properties.
- C. What, when, who for "HOA coordination"
 - 1. What: Inventory of HOAs and develop mission statement (voice of HOA).
 - 2. When: Soon, within 2 years.
 - 3. Who: Watershed Coordinator to facilitate the effort.

Weeks Bay Watershed Management Plan -- Focus Group Workshop Attendees, August 16, 2017

#	Group	SWG	First	Last	Affiliation/business/agency
1	Homeowners		Alma	Akins	Weeks Bay landowner
2	City & County Staff	SWG	Miriam	Boutwell	City of Foley
3	Environmental Org Ldrs		Rebecca Dunn	Bryant	Watershed Building Sustainability
4	Agriculture/Forestry		Rhonda	Bryars	Baldwin County Soil and Water Conservation District
5	City & County Staff	SWG	Kim	Burmeister	Fairhope Planning Dept
6	City & County Staff		Dianne	Burnette	South Alabama Regional Planning Commission
7	Mayors & Elected Officials		Frank	Burt	Baldwin County Commissioner
8	Environmental Org Ldrs		Casi	Callaway	Mobile Baykeeper
9	Homeowners		John	Carlton	Thompson Engineering
10	Mayors & Elected Officials		Tucker	Dorsey	Baldwin County Commissioner
11	Mayors & Elected Officials		Chris	Elliot	Baldwin County Commissioner
12	Environmental Science	SWG	Camilla	English	Baldwin County Health Dept
13	Environmental Org Ldrs		Walter	Ernest	Pelican Coast Conservancy
14	Environmental Science		Michael	Eubanks	Thompson Engineering
15	Business		Jennifer	Foutch	Baldwin County Association of Realtors
16	Homeowners		Rick	Frederick	Mobile Bay National Estuary Program
17	Environmental Org Ldrs		Yael	Girard	Weeks Bay Foundation
18	Homeowners		Gary	Gover	Fairhope Environmental Advisory Board
19	Engineers		Christopher	Grant	Thompson Engineering
20	Engineers		Courtney	Harkness	Thompson Engineering
21	Business		Beth	Higgins	Higgins and Associates
22	Business		Bob	Higgins	Higgins and Associates
23	Mayors & Elected Officials		Bob	Holk	Mayor, Magnolia Springs
24	Environmental Science		Scott	Jackson	Ecology & Environment
25	City & County Staff		Vince	Jackson	Baldwin County Planning & Zoning
26	Environmental Org Ldrs		Neil	Johnston	Hand Arendall LLC
27	Homeowners	SWG	Teddy	King	Magnolia River
28	Agriculture/Forestry	SWG	Joey	Koptis	Farmer
29	Engineers		Jordan	Leech	Thompson Engineering
30	Business	SWG	Gerry	McManus	Baldwin County Sewer Service
31	Homeowners		Mary	Mekkers	Thompson Engineering
32	Environmental Science	SWG	Christian	Miller	Mobile Bay National Estuary Program
33	Developers	SWG	Duane	Miller	DR Horton
34	Agriculture/Forestry	SWG	Larry	Morris	Baldwin County Soil and Water Conservation District
35	Mayors & Elected Officials		Charles	Murphy	Mayor, City of Robertsdale
36	Agriculture/Forestry	SWG	Ronnie	Northcutt	Baldwin County Soil and Water Conservation District
37	Engineers		Steve	O'Hearn	Thompson Engineering
38	City & County Staff	SWG	Seth	Peterson	Baldwin County Highway Department
39	Agriculture/Forestry		William	Puckett	Alabama Soil and Water Conservation Committee
40	Environmental Science	SWG	Randy	Shaneyfelt	Alabama Dept of Environmental Management
41	Environmental Science	SWG	Mike	Shelton	Weeks Bay National Estuarine Research Reserve
42	Homeowners	SWG	Dick	Sute	Fish River
43	Environmental Science	SWG	Roberta	Swann	Mobile Bay National Estuary Program
44	Environmental Science		Tim	Thibaut	Barry A Vittor & Associates
45	Mayors & Elected Officials	SWG	Ken	Underwood	Mayor, City of Magnolia Springs
46	Environmental Science		William	Underwood	Alabama Dept of Conservation and Natural Resources
47	Environmental Science		Barry	Vittor	Barry A Vittor & Associates
48	Environmental Science	SWG	Rick	Wallace	Weeks Bay Foundation
49	Homeowners		George	Wilson	Fairfield Place HOA president, Fairhope
					TOTAL ATTENDEES: 49

WORKSHOP PHOTOGRAPHS
Weeks Bay Watershed Management Plan
Workshop II, August 16, 2017
Baldwin County Central Annex





Weeks Bay Watershed Management Plan Baldwin County, Alabama

Final – November 2017

Submitted to:

**Mobile Bay National Estuary Program
118 North Royal Street, Suite 601
Mobile, AL 36602**

Thompson Engineering Project No.: 16-1101-0012

**Michael J. Eubanks
Project Manager**

**Stephen M. O'Hearn, P.G., LEED AP
Environmental Manager**

2970 Cottage Hill Road, Ste. 190
Mobile, AL 36606
251.666.2443 ph. / 251.666.6422 fax
www.thompsonengineering.com

A THOMPSON HOLDINGS, INC. COMPANY

CERTIFICATE OF ATTENDANCE

FOR PARTICIPATION IN THE

**ALABAMA ASSOCIATION OF FLOODPLAIN MANAGERS
2017 FALL CONFERENCE**

This certificate awards 12 professional development hours (1.2 CEU's) to:

DJ HART

for attendance and participation at the Tenth Annual
AAFM Fall Conference held at the Springhill Suites at The Wharf
in Orange Beach, Alabama on September 25-27, 2017



Denise Pruitt Bell

AAFM President