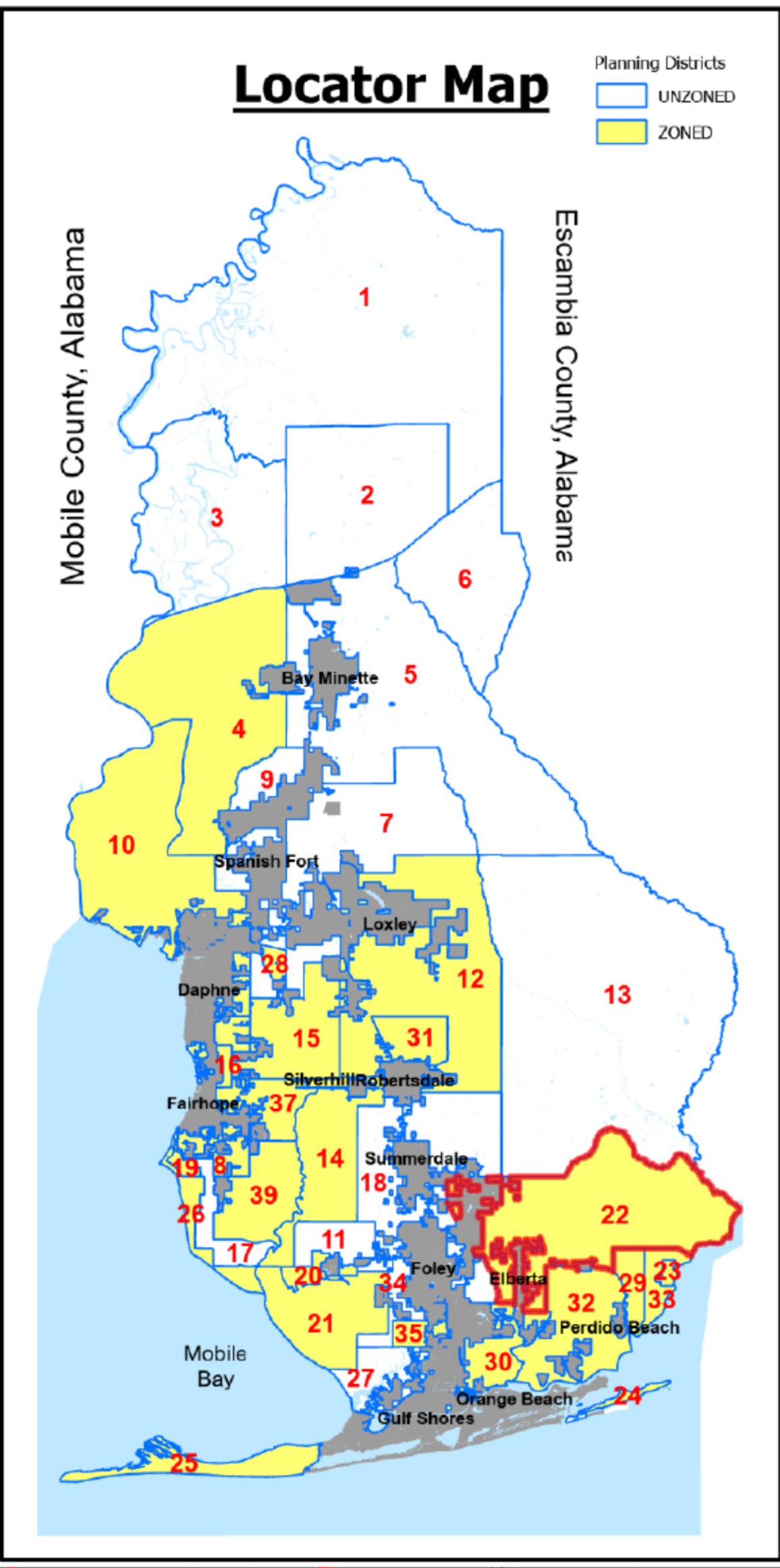
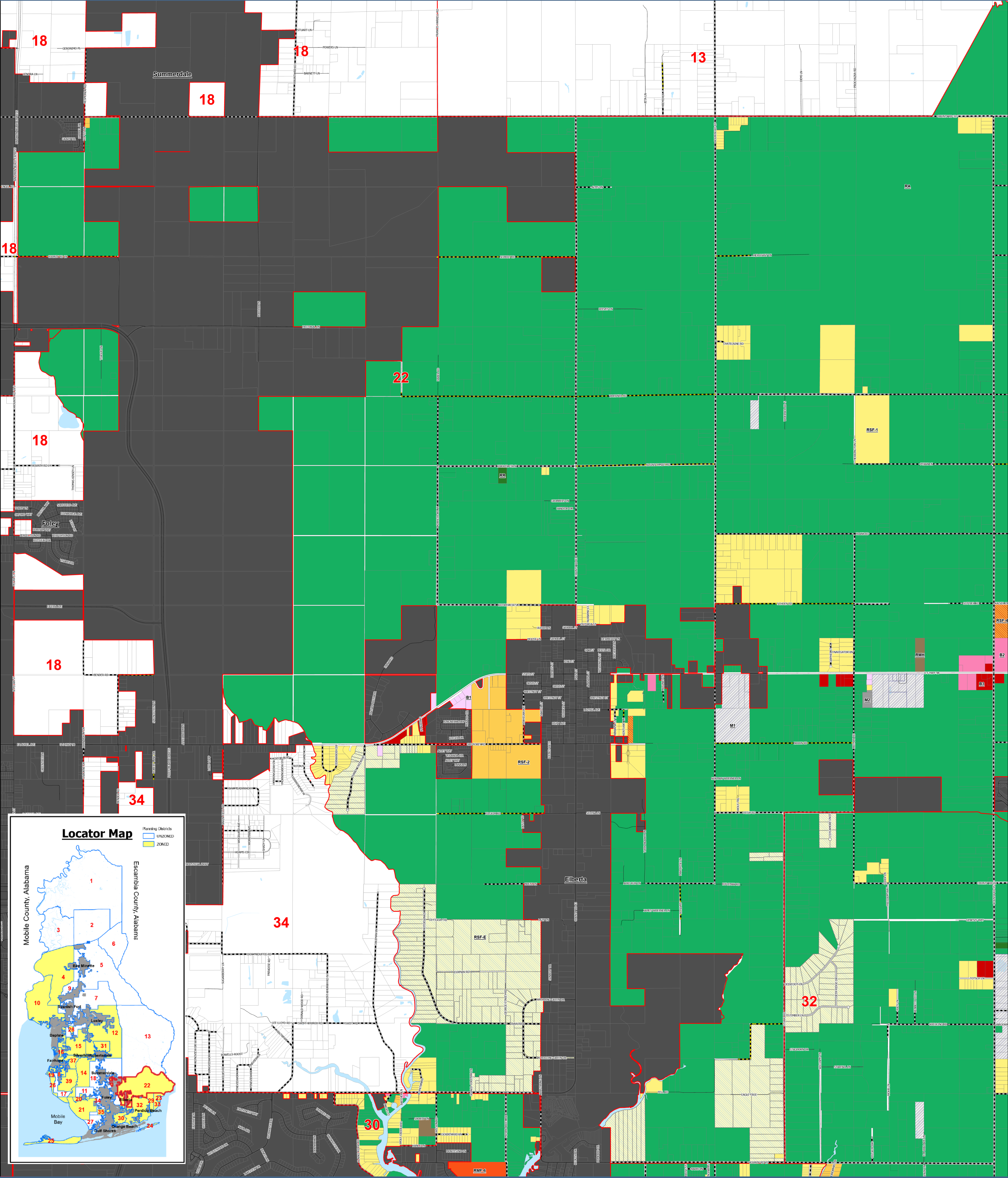


PLANNING DISTRICT 22 (West)



On September 25, 2001, a majority of qualified electors in Planning District 22 voted to institute County Zoning. November 19, 2002, the County Commission adopted the Planning District 22 Zoning Map and Ordinances.



BALDWIN COUNTY, ALABAMA
Planning and Zoning Department

Legend

Planning Districts

- UNZONED
- ZONED

City Limits

Tax Parcels

911 Streets

County Maintained Roads

- Paved
- Unpaved

Zoning

- Rural District (RR)
- Rural Agricultural District (RA)
- Conservation Resource District (CR)
- Residential Single Family Estate District (RSF-E)
- Residential Single Family District (RSF-1)
- Residential Single Family District (RSF-2)
- Residential Single Family District (RSF-3)
- Residential Single Family District (RSF-4)
- Residential Two Family District (RTF-4)
- Residential Single Family District (RSF-6)
- Residential Two Family District (RTF-6)
- Residential Multiple Family District (RMF-6)
- High Density Residential District (HDR)
- Residential Manufactured Housing Park District (RMH)
- Base Community Zoning District (BCZ)
- Marine Recreation District (MR)
- Outdoor Recreation District (OR)
- Tourist Resort District (TR)
- Recreational Vehicle Park District (RV-1)

- Residential Single Family District (RSF-6)
- Residential Two Family District (RTF-6)
- Residential Multiple Family District (RMF-6)
- High Density Residential District (HDR)
- Residential Manufactured Housing Park District (RMH)
- Base Community Zoning District (BCZ)
- Marine Recreation District (MR)
- Outdoor Recreation District (OR)
- Tourist Resort District (TR)
- Recreational Vehicle Park District (RV-1)
- Recreational Vehicle Park District (RV-2)
- Professional Business District (B-1)
- Neighborhood Business District (B-2)
- General Business District (B-3)
- Major Commercial District (B-4)
- Limited Business District (LB)
- Light Industrial District (M-1)
- General Industrial District (M-2)

0 0.13 0.25 0.5 0.75 1 Miles

Print Date: April 5, 2024