

April 10,
2026



Office Hours

Session 2



AGENDA

Housekeeping

Session Topic

Questions

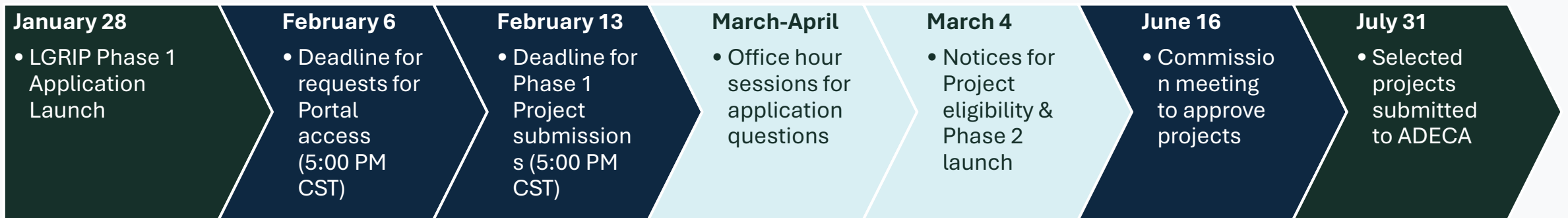
Next Steps



Housekeeping

Phase 2 Office Hours

Application Timeline



LGRIP APPLICATION

Office Hours Format

- Generalized help benefitting **all applicants**
- Brief presentation on **pre-determined** application topic
- Answer questions about **presentation, application, and application process**

LGRIP APPLICATION
**Point of
Contact**

Each applicant should
have 1 designated POC



POC will receive all
application communications
and materials

POC will communicate
questions on behalf of
organization



Alert Katrina Taylor
(katrina.taylor@baldwincountyal.cov) and Molly
Bernard (mbernard@gocivix.com) if POC has changed



Defining the Service Area

Application Focus Topic

PUBLIC FACILITIES &
IMPROVEMENTS

National Objective

**Low-to-
Moderate
Income**

LMI Area Benefit: Activities benefitting a specific area with at least 51% LMI residents

**Urgent
Need**

Activities addressing urgent health and safety need

Doesn't count toward Overall LMI Benefit, so program requirements limit projects using this national objective

PUBLIC FACILITIES & IMPROVEMENTS

Low Mod Area Benefit (LMA)

- Service Area must be primarily residential, open to all residents, and at least 51% LMI
- Area does not need to coincide with census tracts or other official boundaries
- Example activities:
 - Stormwater Management
 - Water/Sewer Facility Hardening

CDBG-DR ELIGIBILITY

LMI Criteria

FY2025	Persons in Family							
Low income (80% of median)	1	2	3	4	5	6	7	8
	52,100	59,550	67,000	74,400	80,400	86,350	92,300	98,250

DEFINING SERVICE AREA

LMA Service Area

Activities with a predetermined service area

Public Facilities- municipality/jurisdiction

Fire Stations- Response coverage areas

All other activities must identify and document service area

Census Tracts

Block Groups

Municipal boundary

Any other boundary with data support LMI percentage

LMA service area and LMI percentage must be documented

LMA SERVICE AREA

Data Definitions

Census Tract

- A geographically defined area used for collecting and tracking census data.

Census Block Group

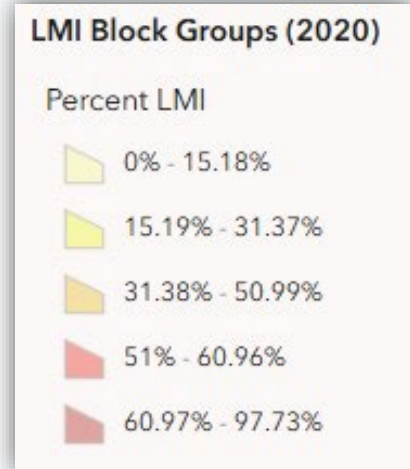
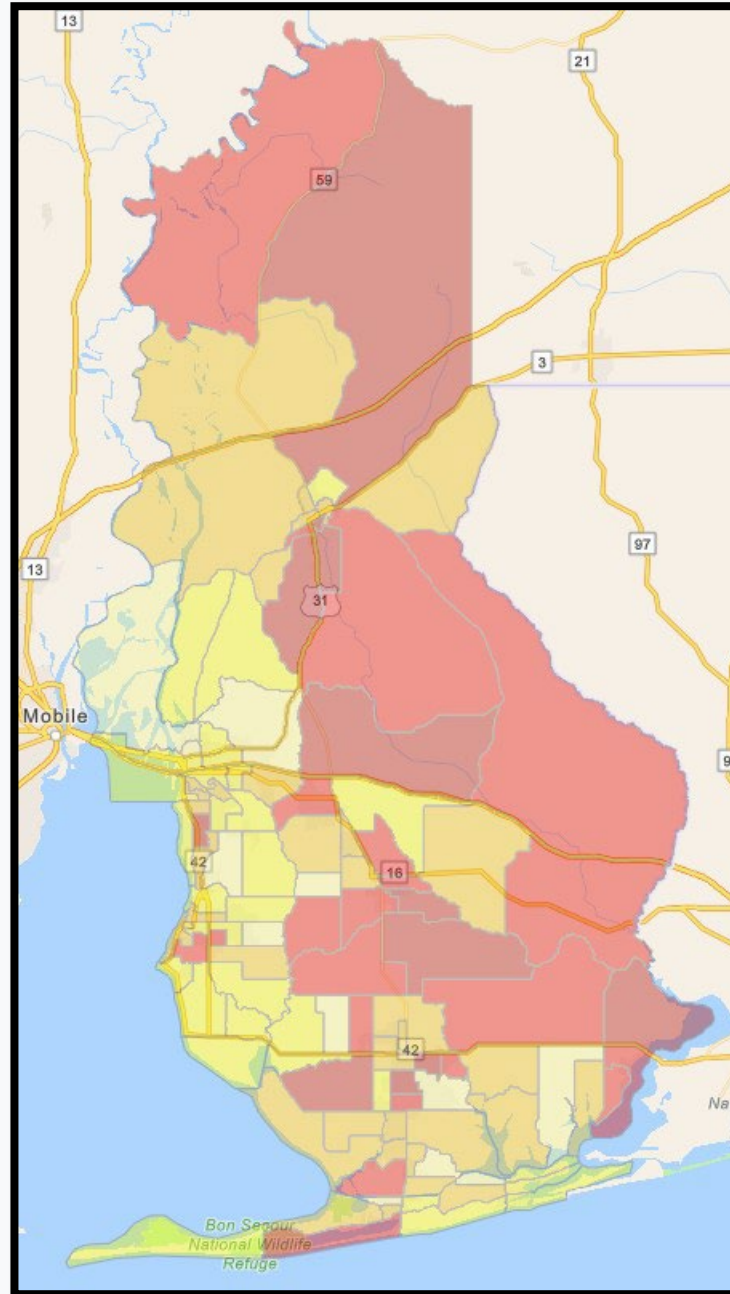
- A statistical division of a census tract that includes several census blocks.

Place

- Jurisdictional boundaries (cities, towns, CDPs)

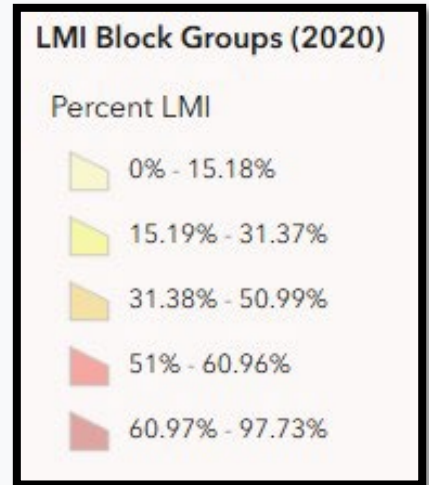
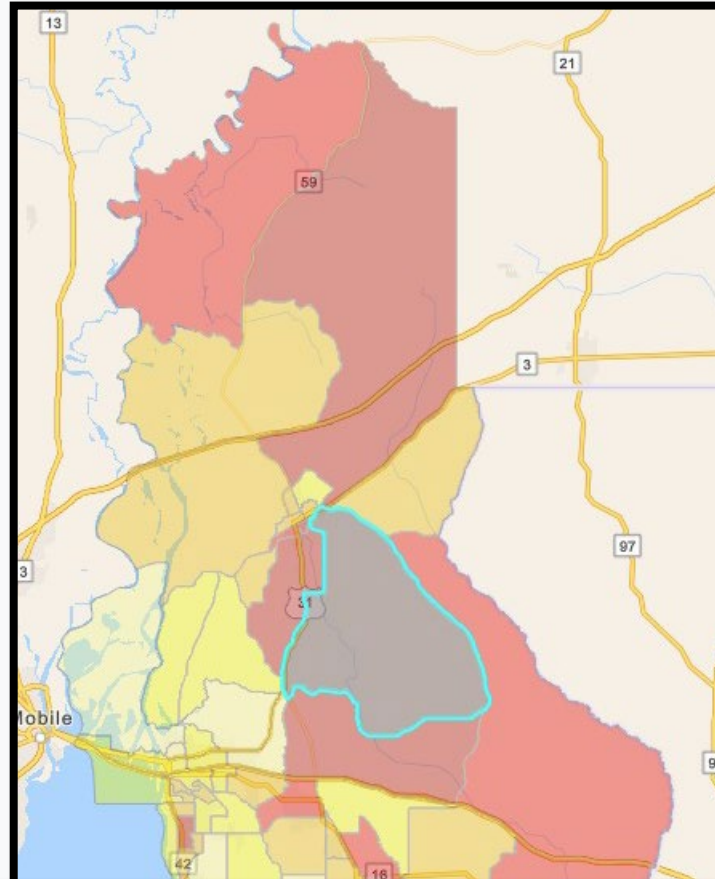
LMI Block Groups

PER 2020 CENSUS DATA



LMI Block Groups Tool

TOOL ON PORTAL



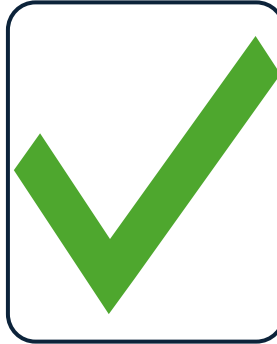
Selected Block Groups ↻ ☰

Block Group ID	LMI Individuals	Total Populati...	Percent LMI
010030104003	1,675	2,765	0.605786618445

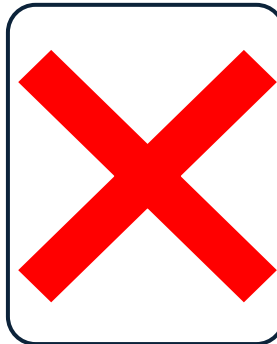


LMA SERVICE AREA

Expected Project Beneficiaries



A project physically located in a non-LMI area but will serve LMI residents



A project physically located in LMI area but will serve non-LMI residents or entire jurisdiction

DRAWING THE LMA SERVICE AREA

Service Area Tool



Uses 2020 Census Data

Available Geographies:
Census Tract, Census Block Group, or Place



Calculates LMI percentage of service area drawn

Service Area LMI Tool

Uses 2020 CENSUS DATA

1. Choose a geography level, Block Groups, Census Tracts, or Place(s)
2. Place a marker at the project location
3. Draw the service area using the selection tool
 - Hit enter to finish drawing
 - Add to the selection by holding Shift and clicking/drawing
 - Subtract from the selection using Ctrl and clicking/drawing
4. Export the selection table by going to the Actions menu, then Export, and selecting Export to CSV
5. Print a PDF of the service area map using the Print tool
 - Check “Show print area,” it’s smaller than the full map

GEOIDs

11 digits long for Census Tracts

12 Digits long for Block Groups

- 2-Digit State ID (01)
- 3-Digit County ID (003)
- 6-Digit Census Tract ID (with leading 0 and no decimal point)
- 1-Digit Block Group Number

Example: 010030109042 would be
Census Tract 109.04, Block Group 2

Reloading a Service Area

1. Use the Select by GEOID/Name tool
2. Create a Clause Set
3. Set to **OR** (not AND)
4. For each Block Group/Census Tract/Place, create a clause in the format:
[Block Group ID/Census Tract ID/NAME] Is [paste from list]

Service Area Tool Demo

Block Groups | Census Tracts | Places

Choose Geography

LMI Block Groups (2020)

Percent LMI

- 0% - 15.18%
- 15.19% - 31.37%
- 31.38% - 50.99%
- 51% - 60.96%
- 60.97% - 97.73%

Selected Block Groups

Block ...	LMI In...	Total P...	Percen...
010030110002	2,015	3,120	0.6458333333...
010030109041	630	1,955	0.3222506393...
010030109042	1,090	1,875	0.5813333333...
010030109063	565	900	0.6277777777...
010030109082	1,530	2,860	0.5349650349...
010030109071	1,040	1,775	0.5859154929...
010030116011	710	1,360	0.5220588235...

Selection Table
Shows GEOID/Name, LMI Population, Total Population, and LMI Percent (as a decimal)

Total: 7 | Selection: 7

Map Tools: Address Search, Selection Mode, Clear Selection, Measure Distance, Select by GEOID, Select by GEOID/Name (use multiple "Or" clauses), Add Marker, Add Text, Print (check "Show Print Area"), Actions Menu (Export Table as CSV)

Map Information: Selected features: 7, Total Service Area LMI, LMI for Selected Block Groups: 54.749%

Powered by Esri



Questions?
Comments?





Next Steps

LGRIP Phase 2



Phase 2 Timeline

April 24

- Office Hours Session 3
- 10 – 11 AM

May 4

- Phase 2 Application Deadline
- 5 PM CST